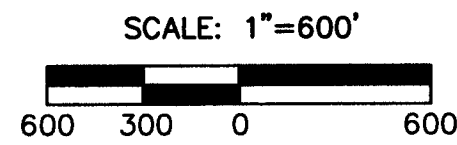


1956

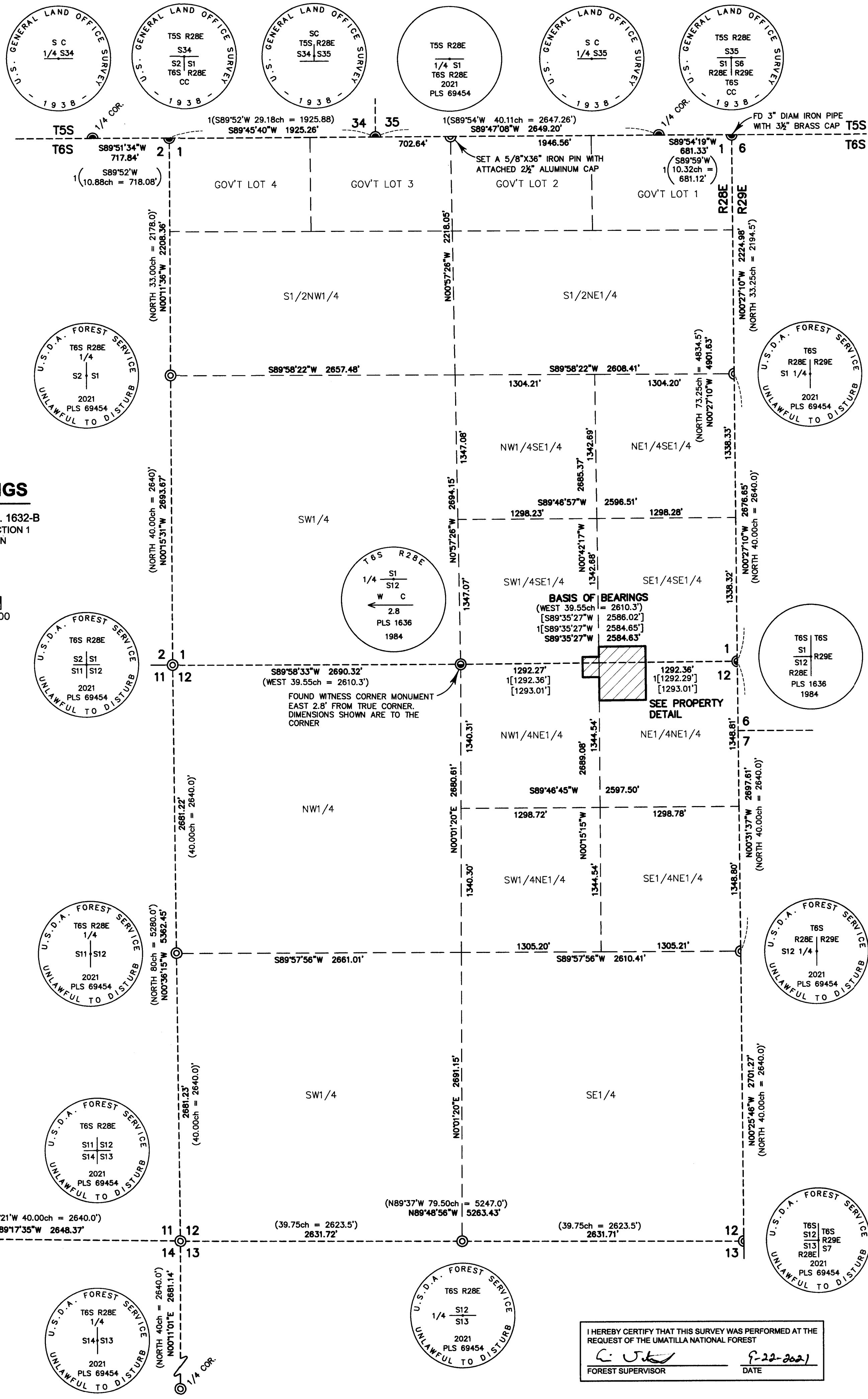
### BASIS OF BEARINGS

MORROW COUNTY SURVEY NO. 1632-B  
THE SOUTH LINE OF THE SE1/4 SECTION 1  
BEARS S89°35'27"W, AS SHOWN

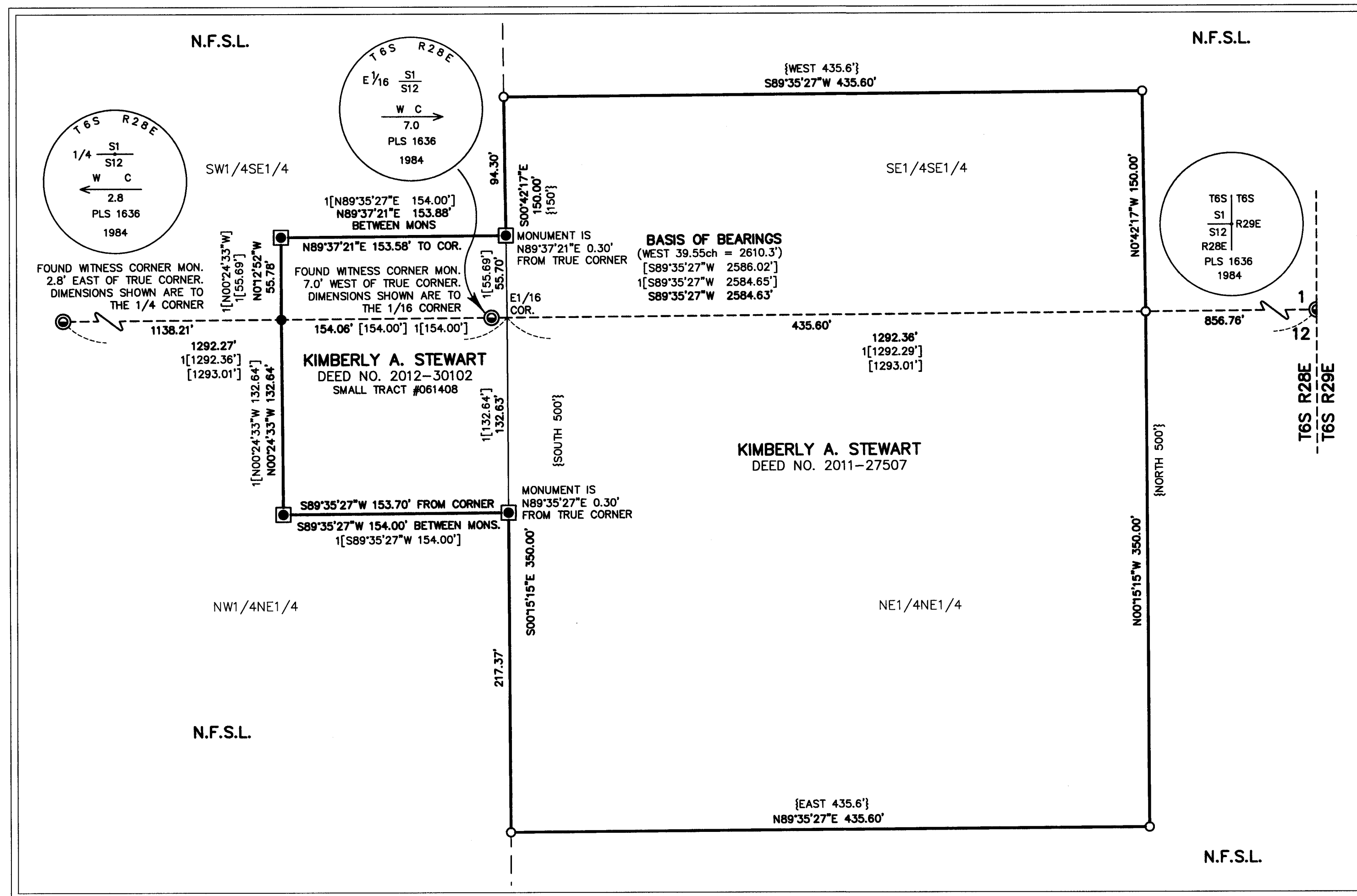
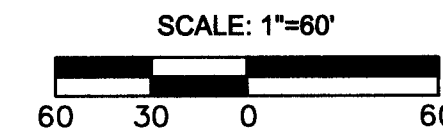


RECEIVED BY  
Morrow County Surveyor  
Date: 9-27-2021  
Rec'd By: M.P.K.  
No.: 2021-1956D  
Folder No.: 1956

REGISTERED  
PROFESSIONAL  
LAND SURVEYOR  
JASON L. HATFIELD  
NOVEMBER 30, 2007  
#69454  
EXPIRES: 6/30/2023



### PROPERTY DETAIL



### NARRATIVE

THIS SURVEY WAS PERFORMED FOR THE UMATILLA NATIONAL FOREST, WITH THE PURPOSE OF DELINEATING THE BOUNDARIES BETWEEN NATIONAL FOREST SYSTEM LAND AND PRIVATE INHOLDINGS IN SECTIONS 1 AND 12, T.6S., R.28E., W.M. THE PRIVATE INHOLDINGS ARE DESCRIBED IN INSTRUMENT NO.'S 2011-27507 AND 2012-30102, DEED RECORDS OF MORROW COUNTY, OREGON. THIS REQUIRED A DEPENDENT RESURVEY AND SUBDIVISION OF SECTIONS 1 AND 12.

A HISTORY OF SURVEYS PERTAINING TO THIS SURVEY ARE AS FOLLOWS:

- THE EXTERIOR LINES AND SUBDIVISION OF TOWNSHIP 6 SOUTH, RANGE 28 EAST WAS PERFORMED BY EDWARD W. SANDERSON, U.S. DEPUTY SURVEYOR, UNDER CONTRACT NO. 368 DATED SEPTEMBER 7, 1880.
- A DEPENDANT RESURVEY OF THE 1ST STANDARD PARALLEL SOUTH WAS PERFORMED IN 1938-1939 BY LEONARD CARTER, PUBLIC LAND SURVEYOR FOR THE GENERAL LAND OFFICE INCLUDED UNDER GROUP NO. 228.
- A SURVEY FOR THE UMATILLA NATIONAL FOREST BY DENNIS GAYLORD, PLS, PERFORMED IN 1984, DOCUMENTING A PRIVATE DWELLING ENCROACHMENT. THERE ARE THREE VERSIONS OF THIS MAP ON FILE IN THE MORROW COUNTY SURVEYOR'S RECORDS. THE FIRST WAS FILED AUGUST 8, 1984 AS SURVEY NO. 671-B. THE SECOND VERSION WAS FILED FEBRUARY 23, 2011 AS SURVEY NO. 5198-B, AND IS NOT SIGNED OR SEALED BY GAYLORD. A REVISED VERSION WAS FILED JANUARY 5, 2012 AS SURVEY NO. 1632-B.
- CORNER CERTIFICATES IN T.6S., R.28E. FILED IN THE OFFICE OF THE MORROW COUNTY SURVEYOR ON AUGUST 8, 1984, PREPARED BY DENNIS GAYLORD, PLS. THESE INCLUDE CORNERS E23, E24 AND E25.
- A SURVEY FOR THE UMATILLA NATIONAL FOREST OF SMALL TRACT NO. 061408 BY MARK LICHTENTHALER, PLS, PERFORMED NOVEMBER 2011, FILED FEBRUARY 9, 2012 IN THE MORROW COUNTY SURVEYOR'S RECORDS AS SURVEY NO. 1633-C.

I MADE FIELD MEASUREMENTS TO RECOVER APPURTENANT CONTROLLING MONUMENTS FROM THE AFOREMENTIONED SURVEYS. A THOROUGH SEARCH WAS MADE FOR EXISTING EVIDENCE AT EACH CORNER LOCATION. ORIGINAL CORNER EVIDENCE WAS FOUND AND ACCEPTED AT THE FOLLOWING CORNERS:

WEST 1/4 CORNER SECTION 1: FOUND ORIGINAL MARKED STONE IN A MOUND OF STONE. ALSO FOUND REMAINS OF ORIGINAL SOUTHEAST BEARING TREE. I ACCEPT THE POSITION OF THE FOUND STONE FOR THE 1/4 CORNER LOCATION.

SOUTHWEST CORNER SECTION 1: FOUND ORIGINAL MARKED STONE LYING LOOSE ON THE DOWNHILL SIDE OF AN EMBEDDED MOUND OF STONE. ALSO FOUND REMAINS OF ORIGINAL NORTHWEST BEARING TREE. I ACCEPT THE POSITION OF THE MOUND OF STONE FOR THE 1/4 CORNER.

EAST 1/4 CORNER SECTION 12: FOUND ORIGINAL MARKED STONE IN A MOUND OF STONE. ALSO FOUND REMAINS OF ORIGINAL BEARING TREE. I ACCEPT THE POSITION OF THE FOUND STONE FOR THE 1/4 CORNER LOCATION.

SOUTH 1/4 CORNER SECTION 11: FOUND DOUBLE-TRUNK JUNIPER, THE NORTHERLY TRUNK IS 11" DBH WITH BLAZE AND ILLEGIBLE SCRIBING ON THE NORTH SIDE OF TREE. ALSO FOUND ORIGINAL BT. I ACCEPT THE POSITION OF THE FOUND JUNIPER TREE FOR THE 1/4 CORNER.

SOUTHEAST CORNER SECTION 12: FOUND ORIGINAL MARKED STONE LYING LOOSE ON THE GROUND WITH NO OTHER STONES. SEARCH AREA HAS BEEN DISTURBED BY LOGGING AND/OR FIRE SUPPRESSION ACTIVITIES. ALSO FOUND ORIGINAL SOUTHWEST BEARING TREE (NOW WIND-THROWN). I REESTABLISH THE CORNER AT G.L.O. RECORD BEARING AND DISTANCE FROM THE ROOT WAD HOLE OF THE WIND-THROWN BT.

WEST 1/4 CORNER SECTION 13: FOUND ORIGINAL MARKED STONE IN A MOUND OF STONE. ALSO FOUND THE ORIGINAL BT. I ACCEPT THE POSITION OF THE FOUND STONE FOR THE 1/4 CORNER.

ALTHOUGH A DILIGENT SEARCH WAS MADE, WE FOUND NO REMAINING EVIDENCE OF THE FOLLOWING CORNERS: EAST 1/4 SECTION 1; SOUTH 1/4, SOUTHWEST, AND WEST 1/4 SECTION 12. WE ALSO SEARCHED FOR SEVERAL LINE TREES ALONG THE SOUTH AND EAST LINES OF SECTION 12, BUT FOUND NO SUFFICIENT EVIDENCE. THE SEARCH AREAS AT EACH OF THESE CORNERS AND LINE TREES SHOWED SIGNS OF EXTENSIVE DISTURBANCE FROM LOGGING ACTIVITIES.

WE RECOVERED CONTROLLING MONUMENTS AT BOTH STANDARD AND CLOSING CORNER LOCATIONS ALONG THE NORTH LINE OF THE TOWNSHIP. THESE MONUMENTS WERE SET DURING A DEPENDENT RESURVEY OF THE 1ST STANDARD PARALLEL SOUTH IN 1938/1939 BY THE G.L.O., WHICH REPRESENTS AN OBVIOUS CAREFUL RESURVEY OF SAID LINE. AS SUCH, THE CLOSING CORNERS OF SECTION 1 EXERCISE CONTROL FOR BOTH MEASUREMENT AND ALIGNMENT ALONG SAID LINE PER SECTION 7-47 OF THE 2009 B.L.M. MANUAL OF SURVEYING INSTRUCTIONS.

THE NORTH 1/4 CORNER SECTION 1, WHICH WAS NOT PREVIOUSLY ESTABLISHED, WAS DETERMINED AT SINGLE PROPORTIONATE MEASUREMENT BETWEEN THE NORTHEAST AND NORTHWEST CORNERS, AND THEN MOVED NORTH ON A LATITUDINAL LINE TO INTERSECT THE SECTION LINE PER SECTION 7-46 OF THE 2009 B.L.M. MANUAL OF SURVEYING INSTRUCTIONS.

I FOUND ALL OF THE APPURTENANT MONUMENTS FROM SURVEY NO.'S 1632-B AND 1633-C, WHICH I ACCEPT. SURVEY NO. 1633-C WAS PERFORMED WITHOUT THE BENEFIT OF THE PROPER SUBDIVISION OF SECTIONS 1 AND 12. IN SAID SURVEY, THE MONUMENTS AT THE NORTHEAST AND NORTHWEST CORNERS OF SMALL TRACT NO. 061408 WERE SET AS REFERENCES TO THE CORNERS SINCE AT THAT TIME THE LOCATIONS OF THE 1/16 LINES WERE UNKNOWN. THE BEARINGS AND DISTANCES FROM SAID MONUMENTS TO THE TRUE CORNERS ARE NOTED HEREON.

SECTIONS 1 AND 12 WERE SUBDIVIDED WITH REFERENCE TO THE 2009 B.L.M. MANUAL OF SURVEYING INSTRUCTIONS. NEW MONUMENTS WERE SET ACCORDING TO THE EVIDENCE FOUND, AS SHOWN HEREON. SEE THE CORNER MONUMENTATION RECORDS FILED SEPARATELY FOR EACH OF THE PLS CORNERS REMONUMENTED OR REESTABLISHED, WHICH PROVIDE MORE DETAILS REGARDING THE EVIDENCE FOUND AND EVALUATED AND THE PERPETUATION ACTIVITIES PERFORMED. THE NATIONAL FOREST BOUNDARY WAS POSTED WITH ALUMINUM POSTS AND BOUNDARY SIGNS.

### LEGEND

- FOUND 2" IRON PIPE WITH ATTACHED 2 1/2" BRASS CAP (UNLESS OTHERWISE NOTED) FROM 1880/1889 GENERAL LAND OFFICE SURVEY BY LEONARD CARTER UNDER GROUP NO. 228
- FOUND 2 1/2" GALV. IRON PIPE WITH ATTACHED 2 1/2" BRASS CAP - SEE SURVEY NO. 1632-B AND CORNER CERTIFICATE FILED IN THE MORROW COUNTY SURVEYOR RECORDS
- FOUND ORIGINAL JUNIPER CORNER TREE - SEE CORNER MONUMENTATION RECORD FILED SEPARATELY FOR MORE DETAILS
- FOUND 3 1/2" BRASS CAP SET IN CONCRETE FROM SURVEY NO. 1633-C
- FOUND 5/8" IRON PIN WITH ATTACHED 1 1/2" ALUMINUM CAP MARKED "USDA WC PLS 1636" FROM SURVEY NO. 1632-B
- SET 2 1/2"x30" ALUMINUM PIPE WITH 3 1/2" USFS ALUMINUM CAP MARKED AS SHOWN (UNLESS OTHERWISE NOTED) - SEE CORNER MONUMENTATION RECORDS FILED SEPARATELY FOR MORE DETAILS
- SET 5/8"x30" IRON PIN WITH ATTACHED 2" ALUMINUM CAP MARKED "PLS 69454"
- RECORD BEARING AND DISTANCE FROM 1880 GENERAL LAND OFFICE SURVEY BY EDWARD W. SANDERSON, U.S. DEPUTY SURVEYOR UNDER CONTRACT NO. 368
- RECORD BEARING AND DISTANCE FROM 1938/1939 GENERAL LAND OFFICE DEPENDENT RESURVEY BY LEONARD CARTER UNDER GROUP NO. 228
- RECORD BEARING AND DISTANCE FROM DEED 2011-27507
- RECORD BEARING AND DISTANCE FROM MORROW COUNTY SURVEY NO. 1632-B
- RECORD BEARING AND DISTANCE FROM MORROW COUNTY SURVEY NO. 1633-C AND DEED NO. 2012-30102
- N.F.S.L. NATIONAL FOREST SYSTEM LAND

### REFERENCES

MORROW COUNTY SURVEY NO.'S 671-B, 1598-B, 1632-B AND 1633-C  
MORROW COUNTY CORNER CERTIFICATES  
DEED RECORD INSTRUMENT NO.'S 2011-27507 & 2012-30102  
GENERAL LAND OFFICE RECORDS



UNITED STATES DEPARTMENT OF AGRICULTURE FOREST SERVICE		
REGION 6 - NORTHEAST OREGON LAND ZONE 1550 DEWEY AVENUE, SUITE A - BAKER CITY, OREGON 97614 - (541) 523-1337		
MAP OF SURVEY TRACTS OF LAND SITUATED IN THE SE1/4 SECTION 1 AND THE NE1/4 SECTION 12, T.6S., R.28E., W.M., MORROW COUNTY, OREGON		
SURVEYED FOR	UMATILLA NATIONAL FOREST	
SURVEYED BY	JLH & RCM	SURVEY COMPLETED: 8/11/2021
SCALE: AS SHOWN	DRAWN BY: JLH	

1956