

34 35

N 00°33'29" W  
 2620.81  
 {N00°06'43"E 2621.31}

**LEGEND**

- ▲ 1/4 CORNER CALCULATED
- ✦ SECTION CORNER CALCULATED
- ✦ SECTION CORNER FOUND
- ⊗ 1/4 CORNER FOUND
- ⊕ CENTER 1/4 CORNER FOUND
- FOUND MONUMENTS PER [(R6)]
- ▲ FOUND MONUMENT  
 DESCRIPTION AND DESIGNATION SHOWN  
 IN COORDINATE TABLE SHEET 3 of 3
- ⊙ SET 3 1/2" ALUMINUM CAP ON 5/8" REBAR  
 DESIGNATION SHOWN IN COORDINATE TABLE SHEET 3 of 3
- ⊕ GEODETIC CONTROL
- USACE RECORD POSITION

- [(R1)] 2017-1784C/ PARTITION PLAT NO. 2017-1
- [(R2)] 2017-1806D PUBLIC LAND CORNER REMONUMENTATION SURVEY HADDOK BEARINGS IN THIS RECORD ARE ROTATED 0°40'14" CLOCKWISE TO "TRUE BEARINGS" PER MORROW COUNTY RECORD OF SURVEY 2017-1806D, FILED 9-21-2017.
- [(R3)] USACE WC-0-0-1/2 MONUMENTED PROJECT BOUNDARY GARY L LANGLITZ PER MORROW COUNTY ROS 2019-1859D FILED 6-03-2019
- [(R4)] USACE ROAD AS BUILT USACE MAP FILE WC-1-5/18.3 RELOCATION WILLOW CREEK ROAD, RESIDENT OFFICE SITE AND ACCESS ROAD
- [(R5)] RONALD V. MCKINNIS; LAKEVIEW HEIGHTS ROS#52677 MORROW COUNTY FROM 11/05/1987 NOTE MCKINNES HAS A TRANSPOSITION ERROR ON THE SECOND PAGE OF HIS SURVEY.
- [(R6)] DANIEL RENTON; WILLOW CREEK PROJECT BOUNDARY ROS 2019-1861D FILED 6-03-2019.

RECORD CENTERLINE MEASUREMENTS FROM USACE AS BUILT MAPPING USACE MAP FILE ((WC-1-5/18.3)) DATED JUNE 26, 1981

CURVE	ARC LENGTH	RADIUS	DELTA ANGLE	CHORD BEARING	CHORD LENGTH
C1	192.72	400.00	127°37'00"	S 13°21'38" W	190.86
C2	215.11	280.00	144°01'00"	S 21°57'42" E	209.86
C3	140.49	170.00	147°21'00"	S 68°08'42" E	136.53

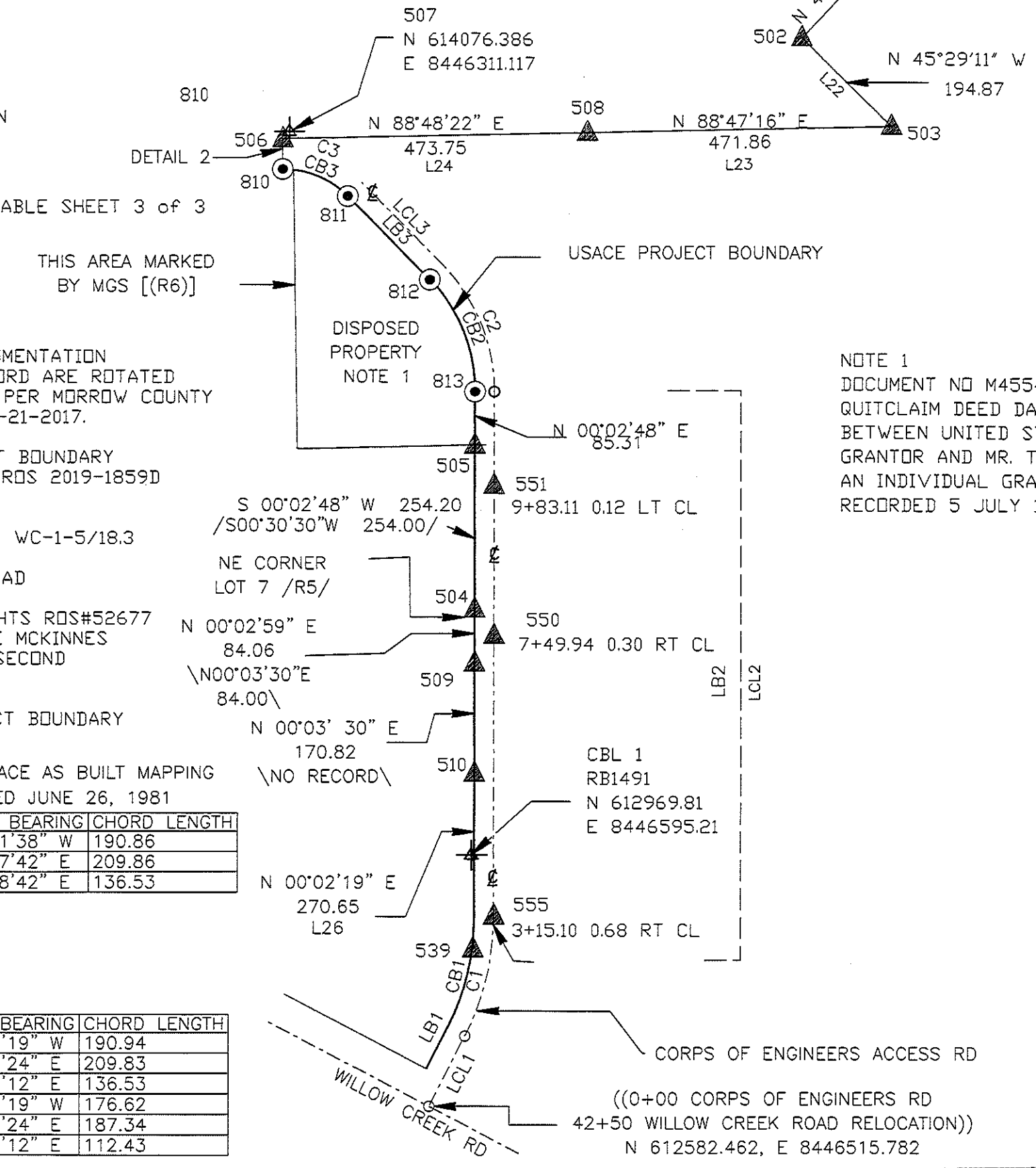
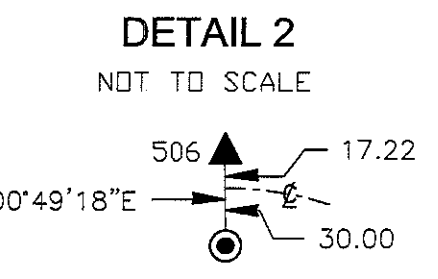
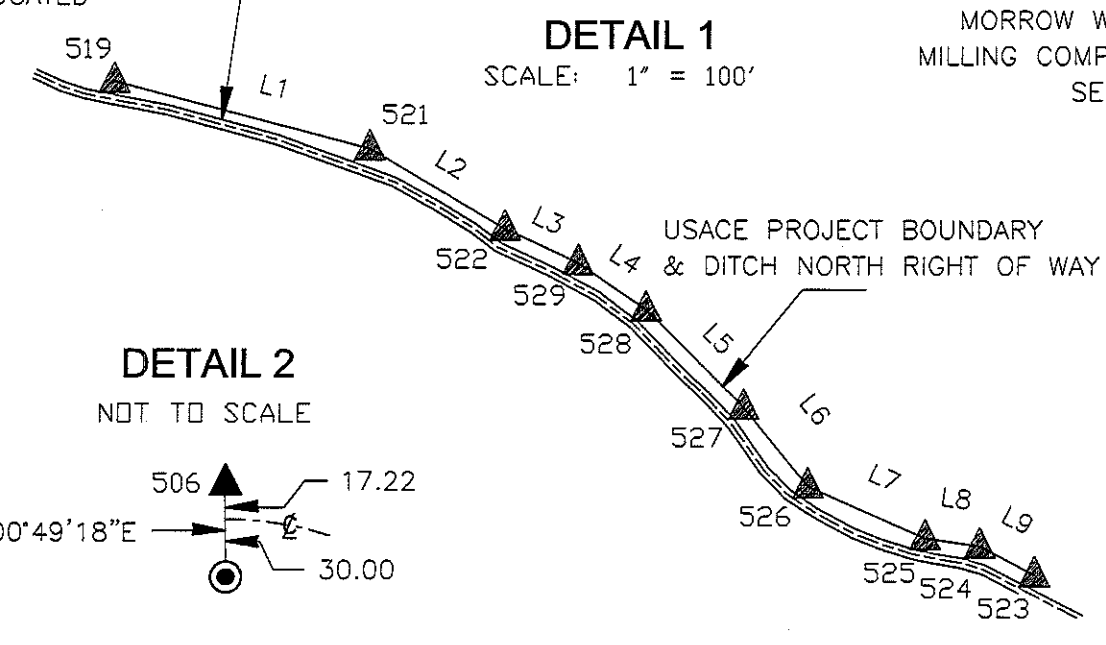
FOUND/CALCULATED THIS SURVEY

CURVE	ARC LENGTH	RADIUS	DELTA ANGLE	CHORD BEARING	CHORD LENGTH
C1	192.80	400.00	127°37'00"	S 13°51'19" W	190.94
C2	215.07	280.00	144°00'37"	S 22°04'24" E	209.83
C3	140.49	170.00	147°21'00"	S 68°15'12" E	136.53
CB1	178.34	370.00	27°37'00"	S 13°51'19" W	176.62
CB2	192.03	250.00	44°00'37"	S 22°04'24" E	187.34
CB3	115.70	140.00	47°21'00"	S 68°15'12" E	112.43

LINE	BEARING	DISTANCE
LB1	S 27°39'49" W	122.30
LB2	S 00°02'50" W	814.31
LB3	S 44°34'42" E	182.15
LCL1	S 27°39'49" W	122.30
LCL2	S 00°02'49" W	814.30
LCL3	S 44°34'42" E	182.15

LB = BOUNDARY LINE  
 LCL = ROAD CENTERLINE

SCALE: 1" = 200'



FOUND BEARINGS AND RECORD MEASUREMENTS FROM DISTANCES THIS SURVEY ROS 2019-1859D FILED 6-03-2019 USACE MAP FILE (WC-0-0-1/2) DATED JAN 25 1983

LINE	BEARING	DISTANCE	LINE	BEARING	DISTANCE
L1	S 75°19'43" E	137.69	L1	S 75°21'45" E	137.68
L2	S 59°23'16" E	81.64	L2	S 59°32'36" E	81.67
L3	S 64°51'26" E	42.21	L3	S 64°49'14" E	42.17
L4	S 55°42'17" E	42.91	L4	S 55°25'05" E	42.80
L5	S 44°54'42" E	72.12	L5	S 45°00'44" E	72.20
L6	S 39°23'42" E	52.72	L6	S 39°26'13" E	52.73
L7	S 66°12'08" E	66.73	L7	S 66°08'38" E	66.75
L8	S 81°30'11" E	28.73	L8	S 81°39'50" E	28.71
L9	S 62°17'45" E	32.15	L9	S 62°12'21" E	32.28

**NOTE 1**  
 DOCUMENT NO M45543  
 QUITCLAIM DEED DATED 2 JUNE 1995  
 BETWEEN UNITED STATES OF AMERICA,  
 GRANTOR AND MR. THOMAS F. WOLFF,  
 AN INDIVIDUAL GRANTEE  
 RECORDED 5 JULY 1995

RECORD MEASUREMENTS FROM ROS 2019-1859D FILED 6-03-2019 USACE MAP FILE (WC-0-0-1/2) DATED JAN 25 1983

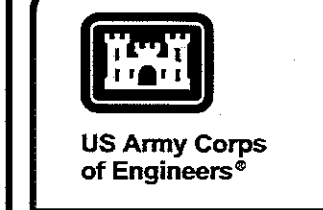
L20	N 42°57'37" E	594.86
L21	N 42°57'44" E	397.70
L22	N 45°25'09" W	194.96
L23	N 88°48'30" E	471.66
L24	N 88°48'30" E	473.68
L25	N 00°03'30" E	508.76
L26	N 00°03'30" E	270.50

**RECEIVED BY**  
 Morrow County Surveyor  
 Date: 10-5-2019  
 Recd By: S.K.H.  
 No.: 2019-1870C  
 Folder No.: 1870

REGISTERED PROFESSIONAL LAND SURVEYOR

*Clifford L. Bondurant*  
 OREGON  
 JUNE 2, 2010  
 CLIFFORD L. BONDURANT  
 83881

RENEWAL DATE 12/31/2019



PREPARED FOR  
 U.S. ARMY CORPS OF ENGINEERS  
 333 SW FIRST AVE  
 PORTLAND OR 97204

SURVEY DATE: 2008/09/27  
 SOLICITATION NO.: N/A  
 CONTRACT NO.: N/A  
 FILE NUMBER: N/A

DESIGNED BY: MICHAEL TIMBLIN  
 DWN BY: C.L.B.  
 CKD BY: M.F.T.  
 SUBMITTED BY: CLIFFORD BONDURANT  
 PLOT SCALE: 1/4" = 100'  
 FILE DATE: 8/26/2019  
 FILE NAME: WILLOW CREEK\_05\_2d.dgn

U.S. ARMY CORPS OF ENGINEERS  
 PORTLAND DISTRICT  
 333 SW FIRST AVE  
 PORTLAND OR 97204

RECORD OF SURVEY  
 WILLOW CREEK DAM  
 PROJECT TITLE 3

SHEET IDENTIFICATION  
 Sheet 2 of 3

# PROJECT BOUNDARY

SOUTHEAST QUARTER  
 TOWNSHIP 2 S RANGE 26 E  
 SECTION 35



US Army Corps of Engineers®

PREPARED FOR  
 U.S. ARMY CORPS OF ENGINEERS  
 333 SW FIRST AVE  
 PORTLAND OR 97204

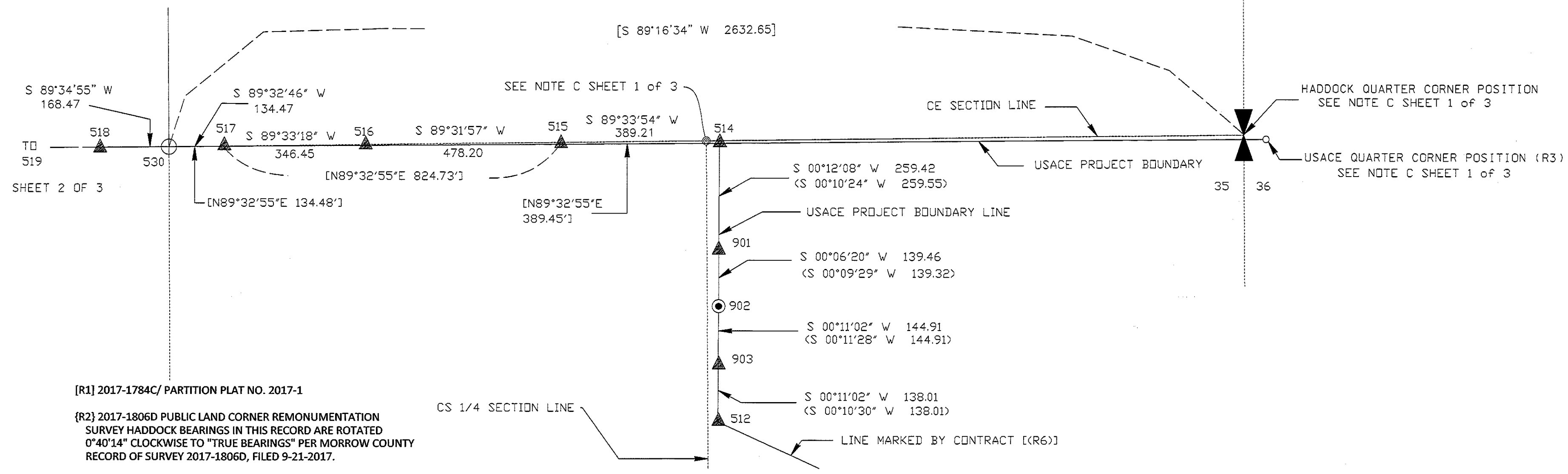
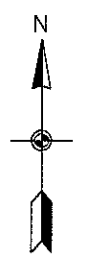
SURVEY DATE:  
 2008/09/27  
 SOLICITATION NO.:  
 N/A  
 CONTRACT NO.:  
 N/A  
 FILE NUMBER:  
 N/A

DESIGNED BY:  
 MICHAEL TIMBLIN  
 DWN BY:  
 CLB  
 CKD BY:  
 MFT  
 SUBMITTED BY:  
 CLIFFORD BONDURANT  
 PLOT SCALE:  
 200.0000 / in.  
 PLOT DATE:  
 8/28/2019  
 FILE NAME:  
 WILLOW CREEK\_pos\_2d.dgn  
 SIZE:  
 ARCH C

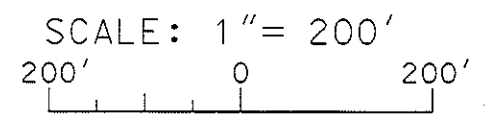
U.S. ARMY  
 CORPS OF ENGINEERS  
 PORTLAND DISTRICT  
 333 SW FIRST AVE  
 PORTLAND OR 97204

RECORD OF SURVEY  
 WILLOW CREEK DAM  
 SOUTHEAST QUARTER  
 TOWNSHIP 2 S RANGE 26 E  
 SECTION 35

SHEET IDENTIFICATION



- [R1] 2017-1784C/ PARTITION PLAT NO. 2017-1
- {R2} 2017-1806D PUBLIC LAND CORNER REMONUMENTATION SURVEY HADDOCK BEARINGS IN THIS RECORD ARE ROTATED 0°40'14" CLOCKWISE TO "TRUE BEARINGS" PER MORROW COUNTY RECORD OF SURVEY 2017-1806D, FILED 9-21-2017.
- (R3) USACE WC-0-0-1/2 MONUMENTED PROJECT BOUNDARY GARY L LANGLITZ PER MORROW COUNTY ROS 2019-1859D FILED 6-03-2019
- ((R4)) USACE ROAD AS BUILT USACE MAP FILE WC-1-5/18.3 RELOCATION WILLOW CREEK ROAD, RESIDENT OFFICE SITE AND ACCESS ROAD
- /R5/ Ronald V. McKinnis; Lakeview Heights ROS#52677 Morrow County from 11/05/1987  
 NOTE McKinnis has a transposition error on the second page of his survey.
- [(R6)] DANIEL RENTON; WILLOW CREEK PROJECT BOUNDARY ROS 2019-1861D FILED 6-03-2019.



COMBINED SCALE FACTOR: 0.999801037  
 ALL RECORD GROUND DISTANCES SHOULD APPLY SCALE FACTOR

## COORDINATE

Point	Northing	Easting	Description
500	617693.759	8447555.005	N 1/4 2" IDIP
501	615077.922	8444936.748	W 1/4 3 1/2" BRASS CAP
502	614239.042	8447095.523	USACE BRASS CAP 110-1 1982
503	614102.420	8447234.485	USACE BRASS CAP 129-1=110 1982
504	613352.297	8446588.667	5/8" REBAR NO CAP
505	613606.497	8446588.884	USACE ALUM CAP 108-1 1982
506	614082.566	8446289.089	USACE BRASS CAP 108-3 1982
507	614076.386	8446311.117	5/8" REBAR W/RPC DDDT
508	614092.438	8446762.733	USACE ALUM CAP PDT 108-3A 1982
509	613268.237	8446588.604	5/8" REBAR W/RPC PLS 2431
510	613097.417	8446588.430	USACE ALUM CAP 108-A 1982
511	614530.053	8448300.263	USACE BM WC-A
512	614436.078	8448923.732	USACE BRASS CAP 112=108-3 1982
513	614559.091	8448950.601	USACE ALUM CAP NDT BOUNDARY
514	615117.877	8448925.812	USACE BRASS CAP 112-1 1982
515	615114.922	8448536.614	USACE BRASS CAP 112-1A 1982
516	615111.021	8448058.426	REMNANT/ANCHOR OF USACE MDN
517	615108.330	8447711.985	USACE BRASS CAP PDT 112-1-C 1982
518	615106.036	8447409.055	USACE BRASS CAP PDT 112-1D 1982
519	615104.310	8447182.914	USACE BRASS CAP 112-2 1982
521	615069.438	8447316.110	USACE BRASS CAP 112-4 1982
522	615027.865	8447386.372	USACE BRASS CAP 112-5 1982
523	614847.822	8447662.342	USACE BRASS CAP 112-11=110-1 1982
524	614862.768	8447633.879	USACE BRASS CAP 112-10 1982
525	614867.013	8447605.465	USACE BRASS CAP 112-3 1982
526	614893.939	8447544.409	USACE BRASS CAP 112-8 1982
527	614934.680	8447510.950	USACE BRASS CAP 112-7 1982
528	614985.752	8447460.035	USACE BRASS CAP 112-6 1982
529	615009.930	8447424.585	USACE BRASS CAP 112-5 1982
530	615107.265	8447577.489	C 1/4 5/8" REBAR W/RPC LS 56295
531	614965.407	8447771.842	USACE ALUM CAP 112-1 2019
533	614705.475	8447528.612	PK W/BRASS WASHER
534	614886.905	8447088.310	BRASS DISC 1+17.29 274.34 RT
535	615004.829	8446973.451	BRASS DISC R2C-R8 1983
536	612457.269	8444962.277	SW SEC COR 2 1/2" BRASS CAP LS56295
537	612371.268	8446661.286	2" ALUM CAP DN REBAR KRUMBEIN
539	612826.767	8446588.247	USACE ALUM CAP 106=108 1982
550	613311.002	8446618.945	USACE BOLT AND WASHER
551	613544.178	8446618.718	USACE BOLT AND WASHER
555	612876.165	8446618.974	USACE BOLT AND WASHER PT 3+15.03
810	614035.395	8446289.750	SET ALUM CAP DN REBAR PDL 16+63.80 2019
811	613993.601	8446390.884	SET ALUM CAP DN REBAR PC 15+26.60 2019
812	613863.953	8446518.638	SET ALUM CAP DN REBAR PT 13+44.45 2019
813	613690.492	8446588.953	SET ALUM CAP DN REBAR PC 11+29.34 2019
5000	614529.967	8447366.171	USACE BRASS CAP 110-1A 1982
901	614858.457	8448924.897	USACE BRASS CAP 112-C 1984
902	614719.000	8448924.640	SET AN UNMARKED 3 1/2" USACE ALUM CAP
903	614574.088	8448924.175	USACE BRASS CAP 112-A 1984

RECEIVED BY  
 Morrow County Surveyor  
 Date: 10-5-2019  
 Rec'd By: S.K.H.  
 No.: 2019-1870C  
 Folder No.: 1870

REGISTERED PROFESSIONAL LAND SURVEYOR  
  
 OREGON  
 JUNE 2, 2010  
 CLIFFORD L. BONDURANT  
 83881

RENEWAL DATE 12/31/2019

- LEGEND
- ▲ 1/4 CORNER CALCULATED
  - ✚ SECTION CORNER CALCULATED
  - ✚ SECTION CORNER FOUND
  - ⊙ 1/4 CORNER FOUND
  - ⊕ CENTER 1/4 CORNER FOUND
  - FOUND MONUMENTS PER [(R6)]
  - ▲ FOUND MONUMENT  
 DESCRIPTION AND DESIGNATION SHOWN IN COORDINATE TABLE
  - ⊙ SET 3 1/2" ALUMINUM CAP ON 5/8" REBAR  
 DESIGNATION SHOWN IN COORDINATE TABLE
  - ⊕ GEODETIC CONTROL
  - USACE RECORD POSITION
  - OTHER CADASTRAL CORNER CALCULATED