

JOHN DAY/ USACE BOUNDARY

PORTIONS OF TOWNSHIP 5 NORTH, RANGE 26 EAST, SECTION 23
AND 24 AND TOWNSHIP 5 NORTH, RANGE 27 EAST, SECTION 19,
WILLAMETTE MERIDIAN, MORROW COUNTY, OREGON.

COUNTY SURVEYORS OFFICE
CSF NO. _____
FILE DATE _____

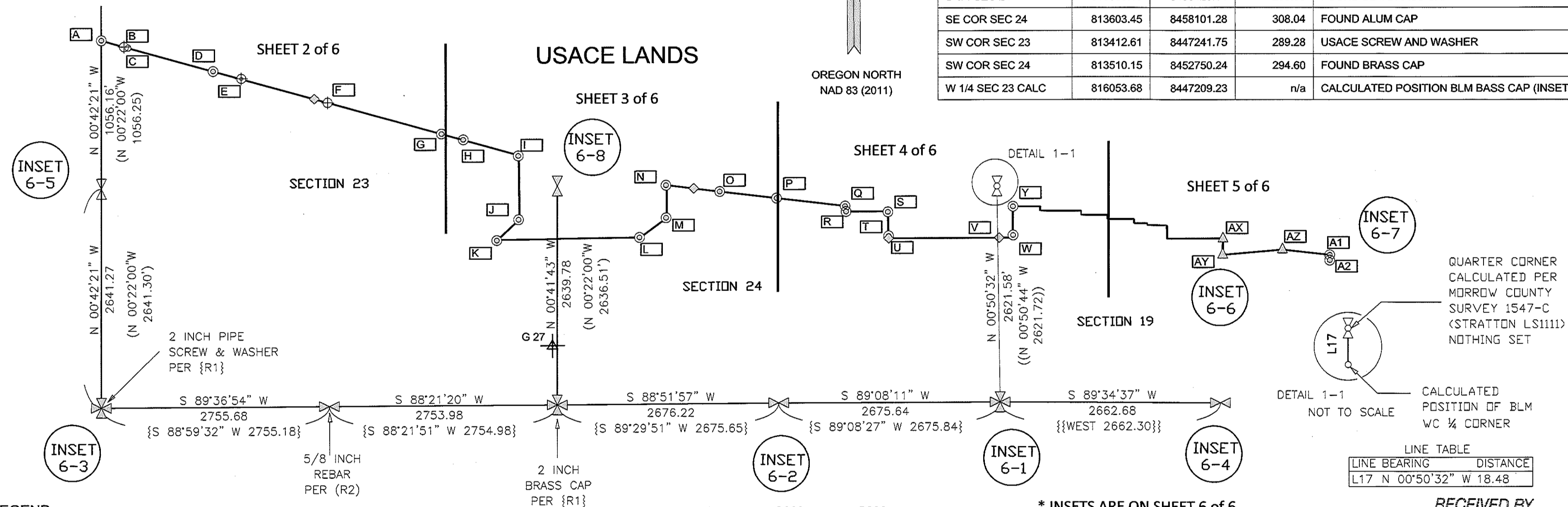
SURVEYOR'S CERTIFICATE AND NARRATIVE:

The purpose of this survey was to retrace a USACE Boundary (Taking Line) Survey circa 1963. The monumented corners were located and missing monuments replaced. The basis of bearing is Oregon State Plane North Zone (3601) NAD 83 (2011) as determined from NGS's Online Positioning Users Service (OPUS). OPUS provides simplified access to high-accuracy National Spatial Reference System (NSRS) coordinates. Upload a Global Positioning System (GPS) data file collected with a survey-grade GPS receiver and obtain an NSRS position via email. OPUS solutions of sufficient duration and data quality can be "shared." Shared solutions are available from NGS's Web site. This survey used multiple ties to OPUS "Shared" control listed in the Geodetic Control Coordinate box on this sheet to determine the basis of bearing. THE RIGHT OF WAY OF MAIN STREET, THE ABANDONED UPRR AND OREGON STATE HIGHWAY 730 WERE DETERMINED UTILIZING VARIOUS SURVEYS. THE UNRECORDED USACE AND BLM (SURVEY FILED 03/02/2002 IN MORROW COUNTY, NO. C-1341-M) WERE DETERMINED TO BEST REPRESENT THE ORIGINAL INTENT OF THE INITIAL USACE TAKING AND WAS HELD AS THE TRUE RIGHT OF WAY FOR THIS SURVEYS INTENT. SURVEY B885E-277, FILED BY G.D. EDWARDS, #951, (SURVEY FILED JANUARY 1989) IS USED AS A COMPARISON OF FOUND LOCAL MONUMENTS INTENDED TO DEMONSTRATE THE MENTIONED RIGHT OF WAY. HOWEVER, EDWARDS AND OREGON DEPARTMENT OF TRANSPORTATION MONUMENTS RECORDS DO NOT NECESSARILY CONFORM TO THE AFOREMENTIONED HELD RIGHT OF WAY.

Geodetic Control				
Name	Northing	Easting	Elevation	Feature Code
E_640	816267.32	8466220.53	282.59	PID RB0606
G_27	814153.78	8452694.21	289.92	PID RB0606
Irrigon	811749.84	8458532.41	343.29	PID RB1433

* E 640 IS NOT SHOWN

CADASTRAL Control				
Name	Northing	Easting	Elevation	Feature Code
BLM S 1/4 SEC 19	813623.12	8460794.54	n/a	CALCULATED CORNER PER RECORD (INSET 6-4)
E 1/4 SEC 23	816149.73	8452718.20	282.05	BRASS CAP ON IRON PIPE
S 1/4 SEC 19	813623.12	8460764.08	317.70	2 INCH BRASS CAP
S 1/4 SEC 23	813431.12	8449997.38	282.99	FOUND 3/8 IN REBAR W/ REMNANTS YPC
S 1/4 SEC 24	813563.13	8455425.94	299.58	FOUND BLM BRASS CAP
SE COR SEC 24	813603.45	8458101.28	308.04	FOUND ALUM CAP
SW COR SEC 23	813412.61	8447241.75	289.28	USACE SCREW AND WASHER
SW COR SEC 24	813510.15	8452750.24	294.60	FOUND BRASS CAP
W 1/4 SEC 23 CALC	816053.68	8447209.23	n/a	CALCULATED POSITION BLM BASS CAP (INSET 6-5)



QUARTER CORNER
CALCULATED PER
MORROW COUNTY
SURVEY 1547-C
(STRATTON LS1111)
NOTHING SET

DETAIL 1-1
NOT TO SCALE
CALCULATED
POSITION OF BLM
WC 1/4 CORNER

LINE TABLE	
LINE BEARING	DISTANCE
L17 N 00°50'32" W	18.48

* INSETS ARE ON SHEET 6 OF 6

LEGEND

- {R1} USACE UNRECORDED DOCUMENT
- {R2} MORROW COUNTY D-303-K, DAVID H. KRUMBEIN LS#933. 5/8/80
- [R3] EDWARDS POS#2017-1795C
- {{R4}} CRAMER POS#B-490-K-213
- ((R7)) BAALMAN LS#02735 POS#2017-1809C
- ⊙ USACE ORIGINAL MONUMENTS ARE FOUND 2" IRON PIPE WITH BRASS SCREW AND WASHER UNLESS OTHERWISE NOTED
- ⊕ SET WC TO ORIGINAL USACE MONUMENT POSITION AS NOTED
- CALCULATED ORIGINAL USACE MONUMENT POSITION
- ◇ FOUND OTHER MONUMENTS AS NOTED
- ⊗ FOUND 1/4 CORNER AS NOTED
- ⊗ FOUND SECTION CORNER AS NOTED
- △ SET 4" ALUMINUM CAP ON ALUMINUM PIPE UNLESS OTHERWISE NOTED.
- CALCULATED POSITION FROM EDWARDS, ROS #2017-1795C
- ⊕ GEODETIC CONTROL (NGS OPUS SHARED MONUMENT)
- ⊕ REBAR AND PLASTIC CAP
- ⊕ CALCULATED POSITION 1/4 CORNER

BASIS OF BEARING: OREGON NORTH STATE PLANE ZONE,
NAD 83 (2011).
USACE DISTANCES ARE GRID. AVERAGED
COMBINED SCALE FACTOR IS 0.99996634.
RECORD USACE AND NON-USACE DISTANCES ARE GROUND.

LOCATION OF SURVEY BY QUARTER SECTIONS

QUARTER SECTIONS	SECTION	TOWNSHIP	RANGE
NE, NW, SE	23	5N	26E
SE, SW	24	5N	26E
SE, SW	19	5N	27E

NAME: UNITED STATES/STATE PLANE 1983
DATUM: NAD 1983(2011)
ZONE: OREGON NORTH 3601
GEOID: GEOID12B
VERTICAL DATUM: NAVD 88
DISTANCE UNIT: International Foot

ABBREVIATIONS

USACE - U.S. Army Corps of Engineers
BLM - Bureau of Land Management
NGS - National Geodetic Survey
UP RR - Union Pacific Railroad
NAD 83 (2011) - North American Datum of 1983 National Adjustment of 2011
NAVD 88 - North American Vertical Datum of 1988
WC - Witness Corner
YPC - Yellow Plastic Cap
IN - INCH

RECEIVED BY
Morrow County Surveyor
Date: 7-23-2019
Rec'd By: S.K.H.
No.: 2019-1865C
Folder No.: 1865

PREPARED BY
CLIFFORD BONDURANT PLS
USACE - PORTLAND
333 SW FIRST AVE
PORTLAND OR 97204

REGISTERED
PROFESSIONAL
LAND SURVEYOR
Clifford Bondurant
OREGON
JUNE 2, 2010
CLIFFORD L. BONDURANT
83881
RENEWAL DATE 12/31/2019



PREPARED FOR
U.S. ARMY CORPS OF ENGINEERS
333 SW FIRST AVE
PORTLAND OR 97204

DESIGNED BY: Michael F. Timlin
DWN BY: CLB
SUBMITTED BY: Clifford L. Bondurant
PLOT SCALE: 1" = 4000'
FILE NUMBER: IrriROS_2D_Final.dgn
ARCH C

U.S. ARMY
CORPS OF ENGINEERS
PORTLAND DISTRICT
333 SW FIRST AVE
PORTLAND OR 97204

RECORD OF SURVEY
JOHN DAY BOUNDARY
PORTIONS OF 5 N, R 26 E, SECTION 23
AND 24 AND 5 N, R 27 E, SECTION 19,
WILLAMETTE MERIDIAN, MORROW COUNTY, OREGON.

SHEET
IDENTIFICATION
SHEET 1 OF 6

1865

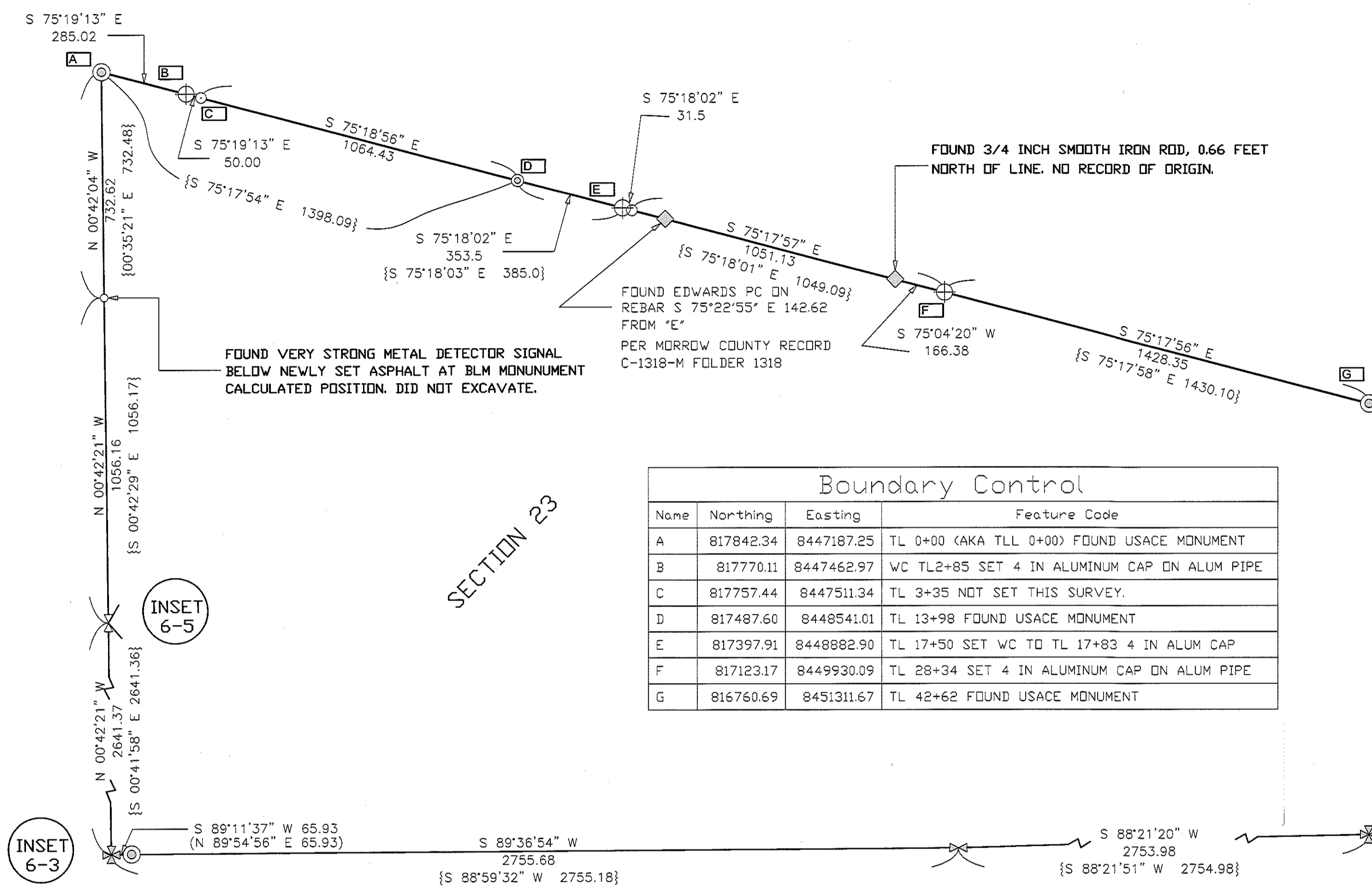
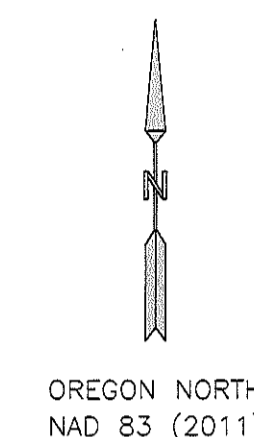
1865

JOHN DAY/ US ACE BOUNDARY
TOWNSHIP 5 NORTH, RANGE 26 EAST, SECTION 23,
WILLAMETTE MERIDIAN, MORROW COUNTY, OREGON.

COUNTY SURVEYORS OFFICE
CSF NO. _____
FILE DATE _____



PREPARED FOR
U.S. ARMY CORPS OF ENGINEERS
333 SW FIRST AVE
PORTLAND OR 97204

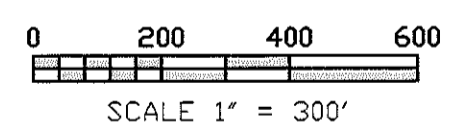


Boundary Control			
Name	Northing	Easting	Feature Code
A	817842.34	8447187.25	TL 0+00 (AKA TLL 0+00) FOUND USACE MONUMENT
B	817770.11	8447462.97	WC TL2+85 SET 4 IN ALUMINUM CAP ON ALUM PIPE
C	817757.44	8447511.34	TL 3+35 NOT SET THIS SURVEY.
D	817487.60	8448541.01	TL 13+98 FOUND USACE MONUMENT
E	817397.91	8448882.90	TL 17+50 SET WC TO TL 17+83 4 IN ALUM CAP
F	817123.17	8449930.09	TL 28+34 SET 4 IN ALUMINUM CAP ON ALUM PIPE
G	816760.69	8451311.67	TL 42+62 FOUND USACE MONUMENT

INSET 6-3

INSET 6-5

SECTION 23



LEGEND

- {R1} USACE UNRECORDED COMPUTATION SHEET INFORMATION
- {R2} MORROW COUNTY D-303-K, DAVID H. KRUMBEIN LS#933. 5/8/80
- ⊙ USACE ORIGINAL MONUMENTS ARE 2" IRON PIPE WITH BRASS SCREW AND WASHER UNLESS OTHERWISE NOTED
- ⊕ SET WC TO ORIGINAL USACE MONUMENT POSITION AS NOTED
- CALCULATED ORIGINAL USACE MONUMENT POSITION
- ◇ FOUND OTHER MONUMENTS AS NOTED
- ⊗ FOUND 1/4 CORNER AS NOTED
- ✱ FOUND SECTION CORNER AS NOTED
- ▲ SET 4" ALUMINUM CAP ON ALUMINUM PIPE UNLESS OTHERWISE NOTED.
- CALCULATED POSITION FROM EDWARDS, RDS #2017-1795C
- REBAR WITH PLASTIC CAP

BASIS OF BEARING: OREGON NORTH STATE PLANE ZONE,
NAD 83 (2011).
USACE DISTANCES ARE GRID. AVERAGED
COMBINED SCALE FACTOR IS 0.99996634.
RECORD USACE AND NON-USACE DISTANCES ARE GROUND.

NAME: UNITED STATES/STATE PLANE 1983
DATUM: NAD 1983(2011)
ZONE: OREGON NORTH 3601
GEOID: GEOID12B
VERTICAL DATUM: NAVD 88
DISTANCE UNIT: International Foot

RECEIVED BY
Morrow County Surveyor
Date: 7-23-2019
Rec'd By: S.K.H.
No.: 2019-1865C
Folder No.: 1865

PREPARED BY
CLIFFORD BONDURANT PLS
USACE - PORTLAND
333 SW FIRST AVE
PORTLAND OR 97204

REGISTERED
PROFESSIONAL
LAND SURVEYOR

Clifford Bondurant
OREGON
JUNE 2, 2010
CLIFFORD L. BONDURANT
83881

RENEWAL DATE 12/31/2019

U.S. ARMY
CORPS OF ENGINEERS
PORTLAND DISTRICT
333 SW FIRST AVE
PORTLAND OR 97204

RECORD OF SURVEY
JOHN DAY BOUNDARY
A PORTION OF 5 N., 26 E., SECTION 23
WILLAMETTE MERIDIAN
MORROW COUNTY, OREGON.

SHEET IDENTIFICATION
SHEET 2 OF 6

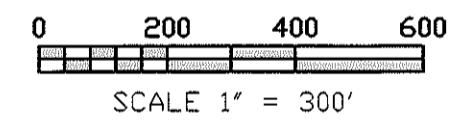
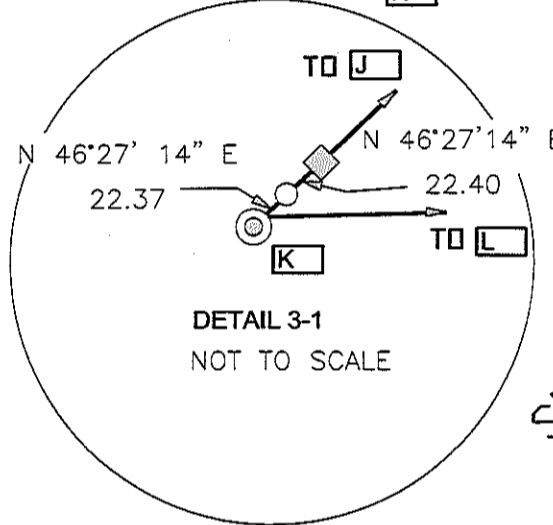
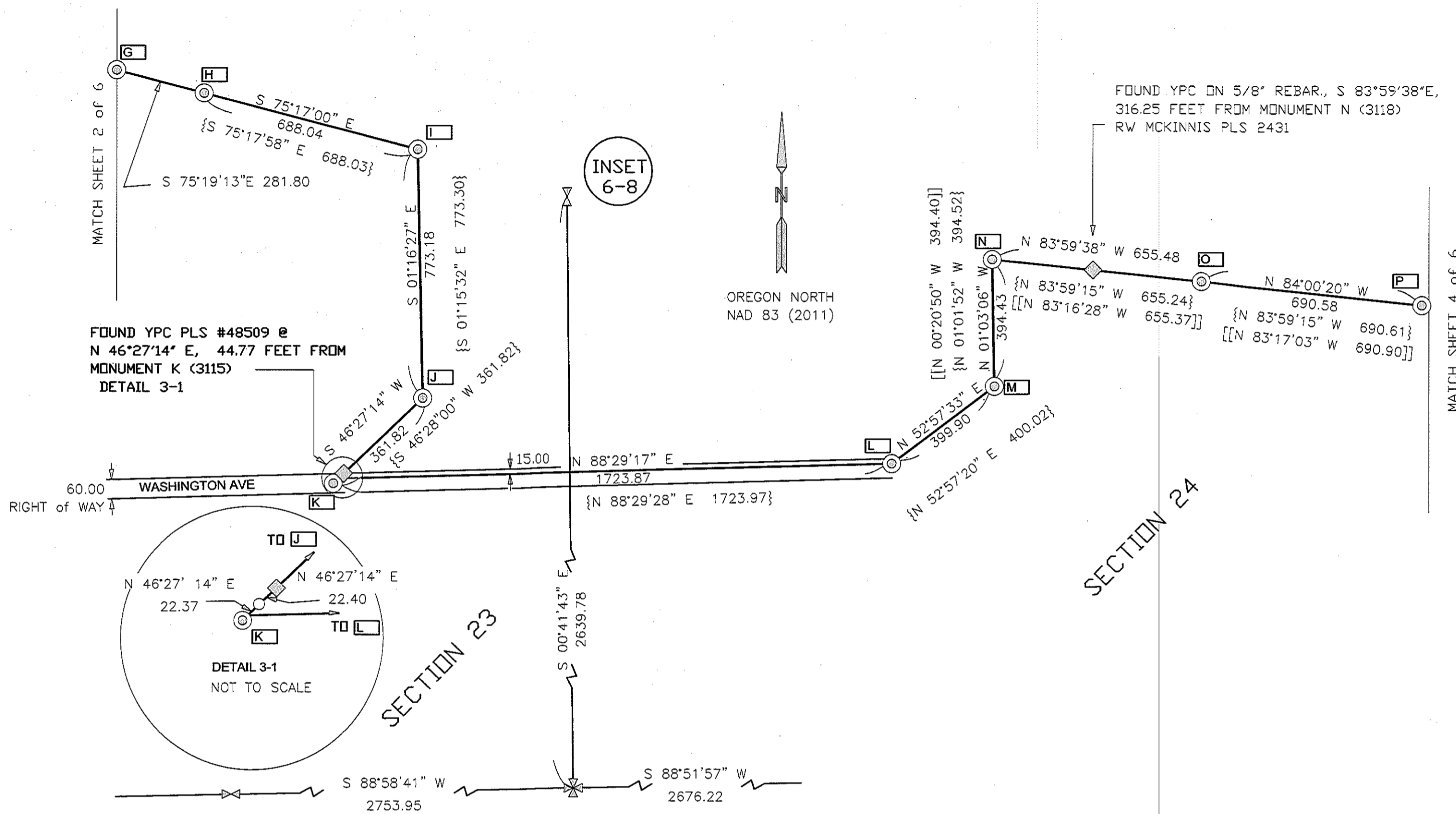
1865

1865

JOHN DAY/ USACE BOUNDARY
TOWNSHIP 5 NORTH, RANGE 26 EAST, SECTION 23 & 24,
WILLAMETTE MERIDIAN, MORROW COUNTY, OREGON.

COUNTY SURVEYORS OFFICE
CSF NO. _____
FILE DATE _____

1865



BASIS OF BEARING: OREGON NORTH STATE PLANE ZONE,
NAD 83 (2011).
USACE DISTANCES ARE GRID. AVERAGED
COMBINED SCALE FACTOR IS 0.99996634.
RECORD USACE AND NON-USACE DISTANCES ARE GROUND.

LEGEND

- {R1} USACE UNRECORDED COMPUTATION SHEET INFORMATION
- {R2} MORROW COUNTY D-303-K, DAVID H. KRUMBEIN LS#933. 5/8/80
- [[R5]] REFERENCE PARTITION PLAT #1992-6, C-957 E, MCKINNIS LS 2431
- ⊙ USACE ORIGINAL MONUMENTS ARE 2" IRON PIPE WITH BRASS SCREW AND WASHER UNLESS OTHERWISE NOTED
- ⊕ SET WC TO ORIGINAL USACE MONUMENT POSITION AS NOTED
- CALCULATED ORIGINAL USACE MONUMENT POSITION
- ◇ FOUND OTHER MONUMENTS AS NOTED
- ⊠ FOUND 1/4 CORNER AS NOTED
- ⊗ FOUND SECTION CORNER AS NOTED
- ▲ SET 4" ALUMINUM CAP ON ALUMINUM PIPE UNLESS OTHERWISE NOTED.
- CALCULATED POSITION FROM EDWARDS, RDS #2017-1795C
- ⊙ REBAR WITH PLASTIC CAP

Boundary Control			
Name	Northing	Easting	Feature Code
G	816760.69	8451311.67	TL 42+62 FOUND USACE MONUMENT
H	816689.18	8451584.24	TL 45+44 FOUND USACE MONUMENT
I	816514.39	8452249.71	TL 52+32 FOUND USACE MONUMENT
J	815741.40	8452266.90	3115-2 FOUND USACE MONUMENT
K	815476.73	8451988.44	3115 FOUND USACE MONUMENT CL. ROADWAY
L	815537.61	8453727.93	3118-2 FOUND USACE MONUMENT
M	815778.51	8454047.13	3118-1 FOUND USACE MONUMENT
N	816172.87	8454039.89	3118 FOUND USACE MONUMENT
O	816104.29	8454691.77	3114-1=3124 FOUND USACE MONUMENT
P	816032.17	8455378.58	3126 FOUND USACE MONUMENT

NAME: UNITED STATES/STATE PLANE 1983
DATUM: NAD 1983(2011)
ZONE: OREGON NORTH 3601
GEOID: GEOID12B
VERTICAL DATUM: NAVD 88
DISTANCE UNIT: International Foot

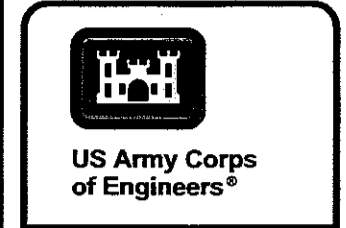
RECEIVED BY
Morrow County Surveyor
Date: 7-23-2019
Rec'd By: S.K.H.
No.: 2019-1865C
Folder No.: 1865

PREPARED BY
CLIFFORD BONDURANT PLS
USACE - PORTLAND
333 SW FIRST AVE
PORTLAND OR 97204

REGISTERED
PROFESSIONAL
LAND SURVEYOR

OREGON
JUNE 2, 2010
CLIFFORD L. BONDURANT
83881

RENEWAL DATE 12/31/2019



PREPARED FOR
U.S. ARMY CORPS OF ENGINEERS
333 SW FIRST AVE
PORTLAND OR 97204

DESIGNED BY: Michael F. Timblin
DWN BY: CLB
SUBMITTED BY: Clifford L. Bondurant
PLOT SCALE: 3600.00 / ft.
SIZE: ARCH C
FILE NAME: IrriqonFOS_2D_Final.dgn

SURVEY DATE: 20190710
FILE NUMBER:
PLOT DATE: 4/10/2019

U.S. ARMY
CORPS OF ENGINEERS
PORTLAND DISTRICT
333 SW FIRST AVE
PORTLAND OR 97204

RECORD OF SURVEY
JOHN DAY BOUNDARY
A PORTION OF 5 N 26 E, SECTION 23 & 24
WILLAMETTE MERIDIAN
MORROW COUNTY, OREGON.

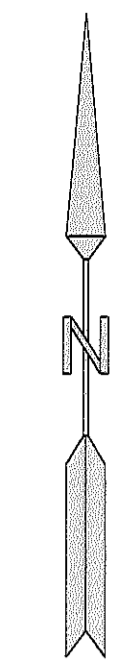
SHEET IDENTIFICATION
SHEET 3 OF 6

1865

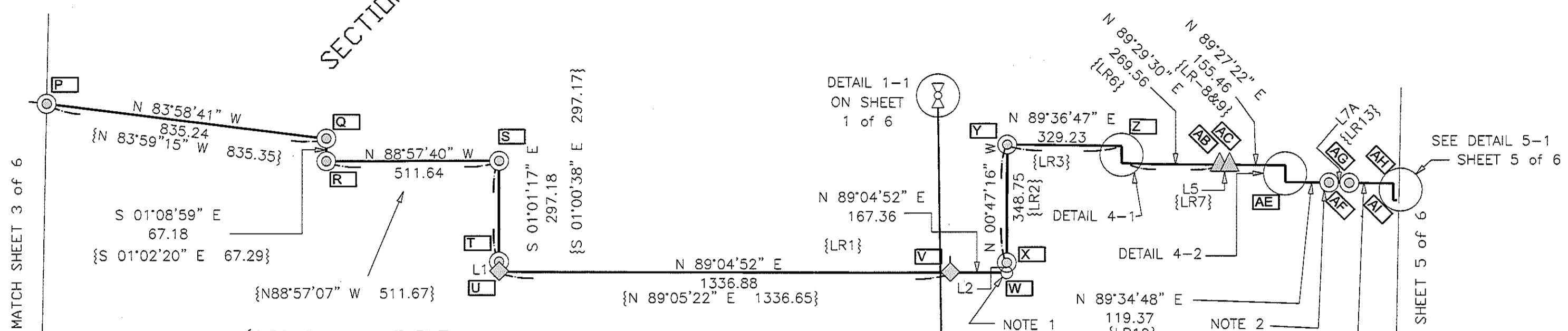
JOHN DAY/ USACE BOUNDARY
 TOWNSHIP 5 NORTH, RANGE 26 EAST, SECTION 24 AND TOWNSHIP 5
 NORTH RANGE 27 EAST, SECTION 19 WILLAMETTE MERIDIAN,
 MORROW COUNTY, OREGON

COUNTY SURVEYORS OFFICE
 CSF NO. _____
 FILE DATE _____

1865



OREGON NORTH
 NAD 83 (2011)



{RECORD LINE TABLE
 USACE UNRECORDED INFORMATION}

LINE	BEARING	DISTANCE
LR1	S 89°34'18" W	167.34'
LR2	S 00°46'22" E	350.30'
LR3	S 89°37'14" W	330.00'
LR4	N 00°46'22" W	50.00'
LR5	N 89°37'14" E	30.00'
LR6	S 89°37'14" W	270.00'
LR7	N 89°37'14" E	30.00'
LR8	S 89°34'52" W	155.00'
LR9	N 89°34'18" E	10.00'
LR10	N 00°46'23" W	50.00'
LR11	S 89°34'18" W	10.00'
LR12	S 89°34'18" W	120.00'
LR13	N 89°34'18" E	60.00'
LR14	S 89°34'18" W	130.00'
LR15	S 00°46'22" E	50.00'
LR16	S 89°34'18" E	10.00'
LR17	S 89°34'18" W	120.00'
LR18	S 89°34'18" W	60.00'
LR19	S 89°34'18" W	130.00'
LR20	N 00°24'28" W	50.00'
LR21	S 89°35'38" W	10.02'
LR22	S 89°35'32" W	120.00'
LR23	N 89°35'32" E	29.98'
LR24	S 00°24'28" E	19.99'
LR25	S 89°35'06" W	208.50'
LR26	S 89°35'12" E	30.00'
LR27	N 01°15'41" W	71.32'
LR28	S 01°15'10" E	58.73'
LR29	N 01°15'11" W	30.00'
LR30	S 89°21'13" W	673.67'
LR31	S 00°59'21" E	195.00'
LR32	N 84°12'27" E	30.00'
LR33	N 84°12'27" E	694.89'
LR34	S 84°14'15" E	599.76'
LR35	S 00°47'12" E	161.91'

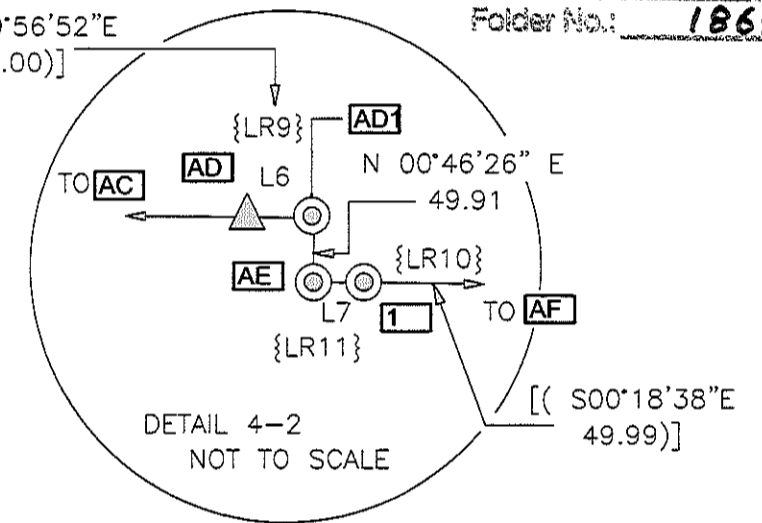
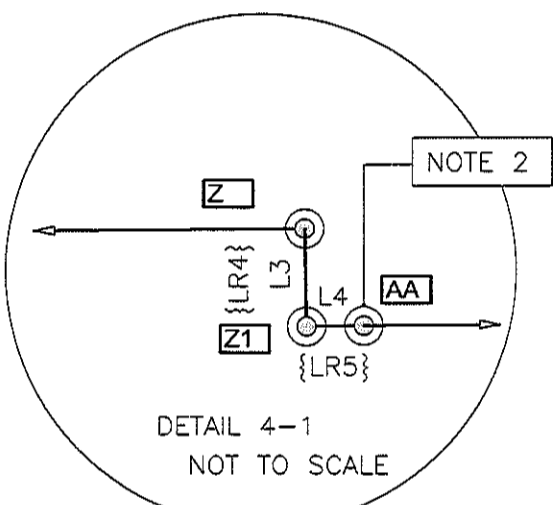
USACE RECORD BEARINGS &
 DISTANCES FROM "V" AND ALONG TAKE
 LINE THROUGH "AY" WERE ACQUIRED
 FROM USACE UNRECORDED
 CALCULATION SHEETS. SAID RECORD
 BEARINGS AND DISTANCES ARE
 REPRESENTED ON RECORD LINE TABLE,
 ON THIS SHEET AND SHEET 5 OF 6.

LINE TABLE

LINE	BEARING	DISTANCE
L1	S 01°00'32" E	29.99'
L2	N 00°47'11" W	30.02'
L3	N 01°00'48" W	50.83'
L4	N 89°29'31" E	30.00'
L5	S 89°41'48" W	29.65'
L6	N 89°56'54" E	9.99'
L7	S 89°17'45" W	10.01'
L7A	S 89°38'17" W	60.23'
L8	S 00°46'38" E	50.05'
L9	S 89°42'23" W	10.00'

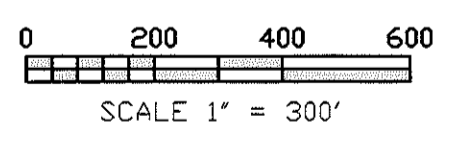
NOTES:

- NOT SET THIS SURVEY. FALLS VERY NEAR WHOLE.
 N00°47'11" W; 30.00 FT TO REF MONUMENT
- FOUND DISTURBED MONUMENT VERY NEAR END OF A
 CONCRETE WALL. MONUMENT IS 0.22 FEET NORTH
 AND 0.37 FEET EAST OF ITS RECORD POSITION.



LEGEND

- {R1} USACE UNRECORDED COMPUTATION SHEET INFORMATION
- (R2) MORROW COUNTY D-303-K, DAVID H. KRUMBEIN LS# 933. 5/8/80
- {{R4}} CRAMER POS#B-490-K-213
- [(R6)] WAGNER POS#C-1249-E
- ((R7)) BAALMAN LS#02735 POS#2017-1809C
- ⊙ USACE ORIGINAL MONUMENTS ARE 2" IRON PIPE WITH BRASS SCREW AND WASHER UNLESS OTHERWISE NOTED
- ⊕ SET WC TO ORIGINAL USACE MONUMENT POSITION AS NOTED
- CALCULATED ORIGINAL USACE MONUMENT POSITION
- ◇ FOUND OTHER MONUMENTS AS NOTED
- ⊠ FOUND 1/4 CORNER AS NOTED
- ⊗ FOUND SECTION CORNER AS NOTED
- ▲ SET 4" ALUMINUM CAP ON ALUMINUM PIPE UNLESS OTHERWISE NOTED.
- CALCULATED POSITION FROM EDWARDS, RDS #2017-1795C
- ⊙ REBAR WITH PLASTIC CAP



BASIS OF BEARING: OREGON NORTH STATE PLANE ZONE,
 NAD 83 (2011).
 USACE DISTANCES ARE GRID. AVERAGED
 COMBINED SCALE FACTOR IS 0.99996634.
 RECORD USACE AND NON-USACE DISTANCES ARE GROUND.

PREPARED BY
 CLIFFORD BONDURANT PLS
 USACE - PORTLAND
 333 SW FIRST AVE
 PORTLAND OR 97204

REGISTERED
 PROFESSIONAL
 LAND SURVEYOR

Clifford Bondurant
 OREGON
 JUNE 2, 2010
 CLIFFORD L. BONDURANT
 83881

RENEWAL DATE 12/31/2019

NAME: UNITED STATES/STATE PLANE 1983
 DATUM: NAD 1983(2011)
 ZONE: OREGON NORTH 3601
 GEOID: GEOID12B
 VERTICAL DATUM: NAVD 88
 DISTANCE UNIT: International Foot

Name	Northing	Easting	Feature Code
P	816032.17	8455378.58	3126 FOUND USACE MONUMENT
Q	815944.55	8456209.21	3127-5 FOUND USACE MONUMENT
R	815877.38	8456210.56	3127-4 FOUND USACE MONUMENT
S	815886.65	8456722.11	3127-3 FOUND USACE MONUMENT
T	815589.52	8456727.41	3127-2 FOUND USACE MONUMENT
U	815559.53	8456727.94	3327-1 FOUND USACE MONUMENT
V	815580.97	8458064.66	AP-PK FOUND PK SPIKE IN ROADWAY
W	815583.66	8458231.99	3132-2 NOT SET THIS SURVEY
X	815613.66	8458231.58	3132-1 SET A 4 IN ALUMINUM CAP ON ALUM PIPE
Y	815962.39	8458226.79	3133-5 FOUND USACE MONUMENT
Z	815964.62	8458556.01	3135-4 FOUND USACE MONUMENT
Z1	815913.79	8458556.91	3135-3 FOUND USACE MONUMENT
AA	815914.06	8458586.91	3135-2 FOUND DISTURBED USACE MON. SEE NOTE 2
AB	815916.45	8458856.46	1807-13 SET 4 IN ALUMINUM CAP ON PIPE
AC	815916.70	8458886.46	1807-11 SET 4 IN ALUMINUM CAP ON PIPE
AD	815918.17	8459041.91	FOUND UNKNOWN USACE MONUMENT
AD1	815918.18	8459051.90	3146-3 FOUND USACE MONUMENT
AE	815868.28	8459052.57	3146-2 FOUND USACE MONUMENT
AF	815869.27	8459181.94	3146-2 FOUND USACE MONUMENT
AG	815869.65	8459241.96	3139-12 FOUND USACE MONUMENT
AH	815870.64	8459372.22	3139-10 FOUND USACE MONUMENT
AI	815820.60	8459372.90	3139-9 FOUND USACE MONUMENT
AJ	815820.65	8459382.85	3139-8 FOUND USACE MONUMENT

RECEIVED BY
 Morrow County Surveyor
 Date: 7-23-2019
 Rec'd By: S.K.H.
 No.: 2019-1865C
 Folder No.: 1865



PREPARED FOR
 U.S. ARMY CORPS OF ENGINEERS
 333 SW FIRST AVE
 PORTLAND OR 97204

DESIGNED BY: Michael F. Tomblin
 CKD BY: MFT
 SUBMITTED BY: Clifford L. Bondurant
 PLOT SCALE: 1" = 300.00 FT
 FILE NAME: IrigonFOS_2D_Final.dgn

U.S. ARMY
 CORPS OF ENGINEERS
 PORTLAND DISTRICT
 333 SW FIRST AVE
 PORTLAND OR 97204

RECORD OF SURVEY
 JOHN DAY BOUNDARY
 A PORTION OF 5 N, 26 E, SECTION 23
 AND
 A PORTION OF 5 N 27 E, SECTION 19
 WILLAMETTE MERIDIAN,
 MORROW COUNTY, OREGON

SHEET IDENTIFICATION
 SHEET 4 OF 6

1865

JOHN DAY/ USACE BOUNDARY
A PORTION OF TOWNSHIP 5 NORTH, RANGE 27 EAST, SECTION 19,
WILLAMETTE MERIDIAN, MORROW COUNTY, OREGON.

COUNTY SURVEYORS OFFICE
CSF NO. _____
FILE DATE _____

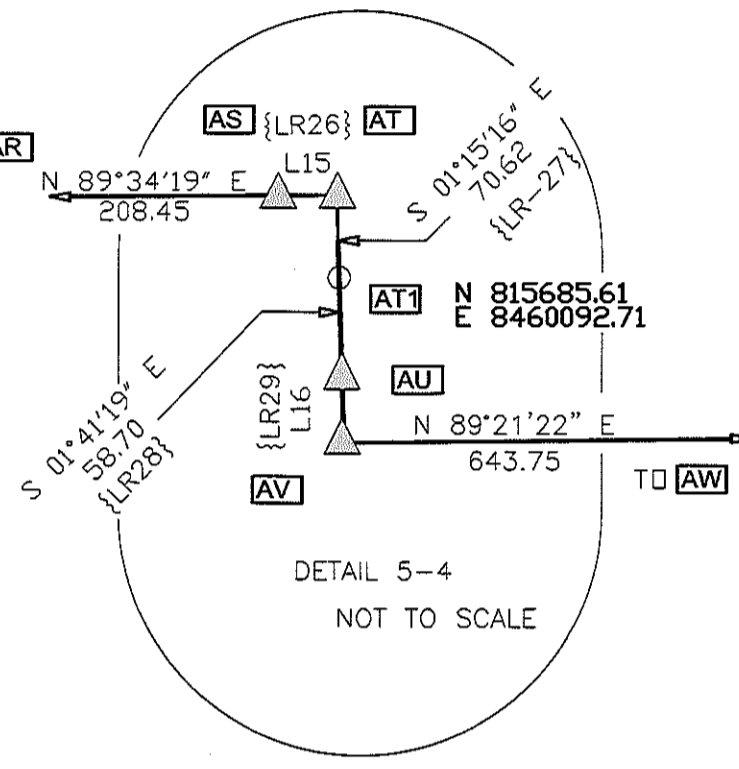
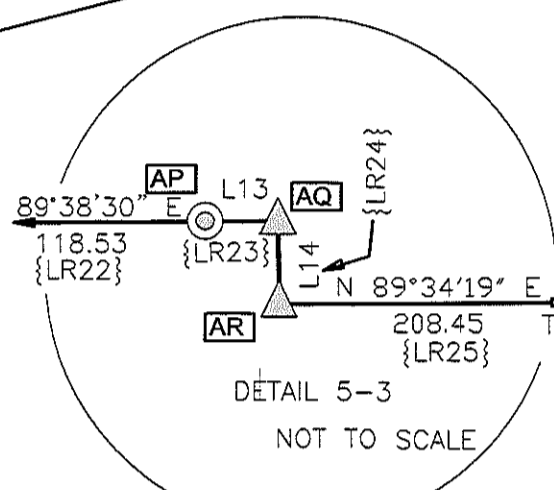
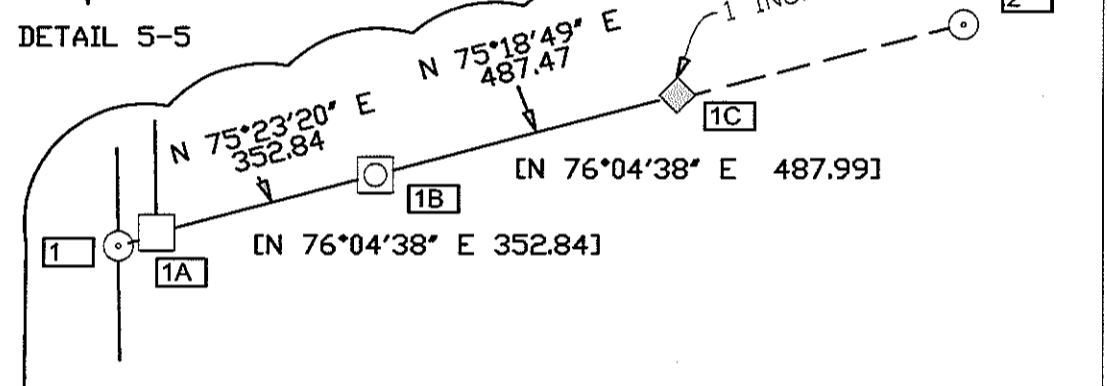
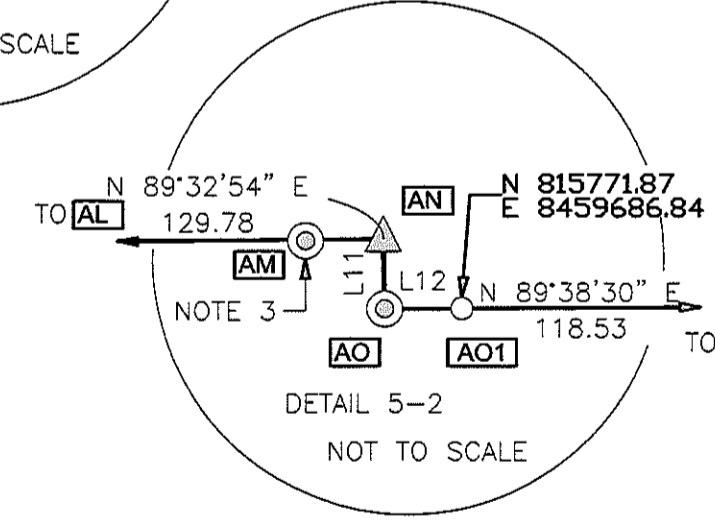
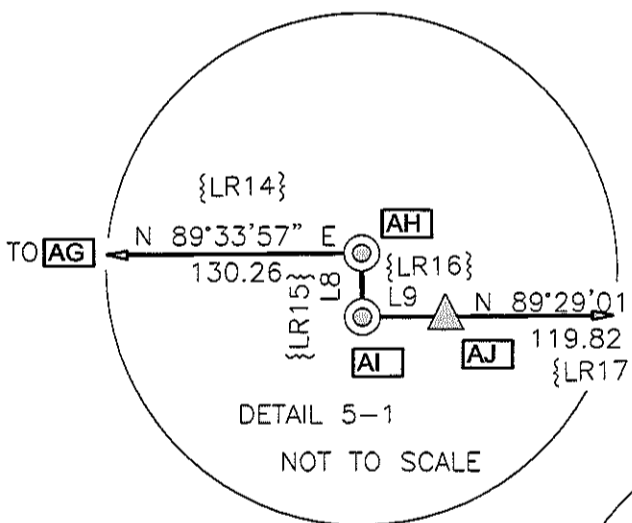
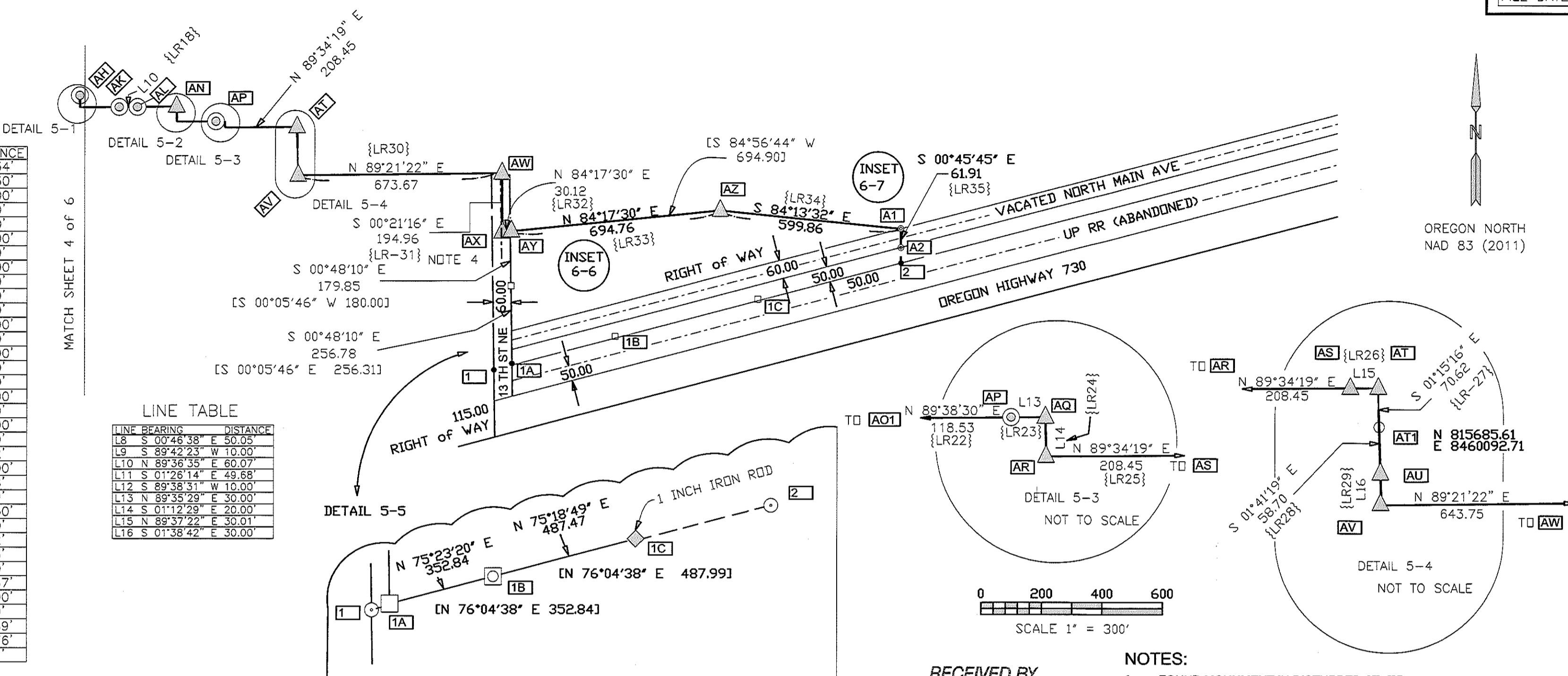
1865

{RECORD LINE TABLE
USACE UNRECORDED
INFORMATION}

LINE	BEARING	DISTANCE
LR1	S 89°34'18" W	167.34
LR2	S 00°46'22" E	350.30
LR3	S 89°37'14" W	330.00
LR4	N 00°46'22" W	50.00
LR5	N 89°37'14" E	30.00
LR6	S 89°37'14" W	270.00
LR7	N 89°37'14" E	30.00
LR8	S 89°34'52" W	155.00
LR9	N 89°34'18" E	10.00
LR10	N 00°46'23" W	50.00
LR11	S 89°34'18" W	10.00
LR12	S 89°34'18" W	120.00
LR13	N 89°34'18" E	60.00
LR14	S 89°34'18" W	130.00
LR15	S 00°46'22" E	50.00
LR16	N 89°34'18" E	10.00
LR17	S 89°34'18" W	120.00
LR18	N 89°34'18" E	60.00
LR19	S 89°34'18" W	130.00
LR20	N 00°24'28" W	50.00
LR21	S 89°35'38" W	10.02
LR22	S 89°35'32" W	120.00
LR23	N 89°35'32" E	29.98
LR24	S 00°24'28" E	19.99
LR25	S 89°35'06" W	208.50
LR26	N 89°35'12" E	30.00
LR27	N 01°15'41" W	71.32
LR28	S 01°15'10" E	58.73
LR29	N 01°15'11" W	30.00
LR30	S 89°21'13" W	673.67
LR31	S 00°59'21" E	195.00
LR32	N 84°12'27" E	30.00
LR33	N 84°12'27" E	694.89
LR34	S 84°14'15" E	599.76
LR35	S 00°47'12" E	61.91

LINE TABLE

LINE	BEARING	DISTANCE
L8	S 00°46'38" E	50.05
L9	S 89°42'23" W	10.00
L10	N 89°36'35" E	60.07
L11	S 01°26'14" E	49.68
L12	S 89°38'31" W	10.00
L13	N 89°35'29" E	30.00
L14	S 01°12'29" E	20.00
L15	N 89°37'22" E	30.01
L16	S 01°38'42" E	30.00



DETAIL 5-5 NOTES:

- 1A N 75°18'43" E, 62.97 FEET AND N 14°41'17" W, 4.36 FEET PERPENDICULAR TO LINE FROM CALC POSITION 1 TO POSITION 2 NO MONUMENT FOUND. CALC POSITION FROM MORROW COUNTY, P.PLAT 2003-11 M 2003-8698.
- 1B N 75°18'43" E, 415.81 FEET AND N 14°41'17" W, 3.89 FEET PERPENDICULAR TO LINE FROM CALC POSITION 1 TO POSITION 2 FOUND A YPC ON A 5/8" REBAR, SET BY PLS 951 FROM MORROW COUNTY, P.PLAT 2003-11 M 2003-8698.
- 1C N 75°18'43" E, 903.28 FEET AND N 14°41'17" W, 3.87 FEET PERPENDICULAR TO LINE FROM CALC POSITION 1 TO POSITION 2 FOUND A 1" IRON ROD, SLIGHTLY DISTURBED. P.PLAT 2003-11 M 2003-8698.

- 1 N 814955.12 E 8460743.41 CALCULATED
- 2 N 815308.33 E 8462091.14 CALCULATED

USACE R/W INFORMATION DIFFERS FROM MORROW COUNTY, P. PLAT 2003-11, M-2003-8698 AS EXPLAINED IN NARRATIVE

RECEIVED BY
Morrow County Surveyor
Date: 7-23-2019
Rec'd By: S.K.H.
No.: 2019-1865C
Folder No.: 1865

- NOTES:
- 3 FOUND MONUMENT IN DISTURBED STATE 0.4 FEET NORTH AND 9.7 FEET WEST OF ADJACENT MONUMENT.
 - 4 SET A 3 1/2" ALUMINUM CAP ON A 5/8" REBAR FOR A WITNESS POSITION FOR 3202-3. THE TRUE POSITION OF THE CORNER FELL ON A 1" DEEP LATERAL CONDUIT. THE ALUMINUM CAP WAS SET 1.0 FEET NORTH, AND ON LINE, TO MARK TRUE POSITION

LEGEND

- {R1} USACE UNRECORDED COMPUTATION SHEET INFORMATION
- {R2} MORROW COUNTY D-303-K, DAVID H. KRUMBEIN LS#933. 5/8/80
- {R3} EDWARDS POS #2017-1795C
- ⊙ USACE ORIGINAL MONUMENTS ARE 2" IRON PIPE WITH BRASS SCREW AND WASHER UNLESS OTHERWISE NOTED
- ⊕ SET WC TO ORIGINAL USACE MONUMENT POSITION AS NOTED
- CALCULATED ORIGINAL USACE MONUMENT POSITION
- ◇ FOUND OTHER MONUMENTS AS NOTED
- ⊗ FOUND 1/4 CORNER AS NOTED
- ⊗ FOUND SECTION CORNER AS NOTED
- ▲ SET 4 IN ALUMINUM CAP ON ALUMINUM PIPE UNLESS OTHERWISE NOTED.
- CALCULATED POSITION FROM EDWARDS, ROS #2017-1795C
- ⊙ REBAR WITH PLASTIC CAP
- CALCULATED POSITION BLM/USACE R/W #C-1341-M SHOWN ON INSET 6-7

REGISTERED PROFESSIONAL LAND SURVEYOR
Clifford L. Bondurant
OREGON
JUNE 2, 2010
CLIFFORD L. BONDURANT
83881
RENEWAL DATE 12/31/2019

Boundary Control			
Name	Northing	Easting	Feature Code
AH	815870.64	8459372.22	3139-10 FOUND USACE MONUMENT
AI	815820.60	8459372.90	3139-9 FOUND USACE MONUMENT
AJ	815820.65	8459382.85	3139-8 FOUND USACE MONUMENT
AK	815821.73	8459502.68	3139-7 FOUND USACE MONUMENT
AL	815822.08	8459562.74	3139-6 FOUND USACE MONUMENT
AM	815823.42	8459682.84	FOUND USACE MON/DISTURBED. SEE NOTE 3
AN	815823.10	8459692.51	1807-11 RESET ALUMINUM CAP ON PIPE
AO	815773.44	8459693.76	3139 RESET 3 1/2 IN ALUM CAP ON PIPE
AP	815774.24	8459822.29	3139-1 FOUND USACE MONUMENT
AQ	815774.46	8459852.29	UNKNOWN METAL OBJECT/BURIED DEEPLY IN PARKING LOT
AR	815754.60	8459852.71	1807-10 SET 3 1/2 IN ALUMINUM CAP ON PIPE
AS	815756.02	8460061.15	3150-3A RESET. 4 IN ALUMINUM CAP ON PIPE
AT	815756.22	8460091.16	3150-4 SET 4 IN ALUMINUM CAP ON PIPE
AU	815626.95	8460094.45	3150-2 RESET 3 1/2 IN ALUMINUM CAP ON PIPE
AV	815596.95	8460095.30	3150-1 RESET 3 1/2 IN ALUMINUM CAP ON REBAR
AW	815604.57	8460768.91	3203-4 RESET A 4 IN ALUMINUM CAP ON PIPE
AX	815409.60	8460771.26	3202-3 RESET WITNESS SEE NOTE 4
AY	815411.74	8460800.26	FOUND USACE MONUMENT
AZ	815481.72	8461491.49	FOUND USACE MONUMENT
A1	815421.37	8462088.30	FOUND USACE MONUMENT
A2	815359.46	8462089.13	FOUND USACE MONUMENT

US Army Corps of Engineers®

PREPARED FOR
U.S. ARMY CORPS OF ENGINEERS
333 SW FIRST AVE
PORTLAND OR 97204

DESIGNED BY: Michael F. Timlin
DWN BY: CLB
SUBMITTED BY: Clifford L. Bondurant
PLOT SCALE: 300.00 / in.
SIZE: ARCH C

FILE NUMBER:
FILE NAME: IrriqonROS_20_Final.dgn

U.S. ARMY CORPS OF ENGINEERS
PORTLAND DISTRICT
333 SW FIRST AVE
PORTLAND OR 97204

RECORD OF SURVEY
JOHN DAY BOUNDARY
A PORTION OF 5N, 27E, SECTION 19,
WILLAMETTE MERIDIAN
MORROW COUNTY, OREGON.

SHEET IDENTIFICATION
SHEET 5 OF 6

1865

JOHN DAY/ USACE BOUNDARY

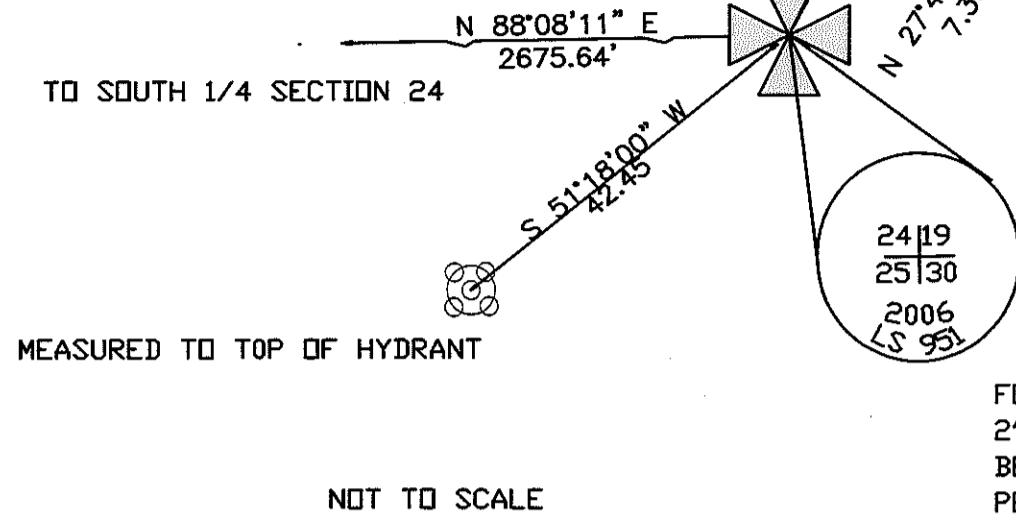
PORTIONS OF TOWNSHIP 5 NORTH, RANGE 26 EAST, SECTION 23
AND 24 AND TOWNSHIP 5 NORTH, RANGE 27 EAST, SECTION 19,
WILLAMETTE MERIDIAN, MORROW COUNTY, OREGON.

COUNTY SURVEYORS OFFICE
CSF NO. _____
FILE DATE _____

1865

INSET 6-1

MONUMENT FALLS NEAR INTERSECTION OF DIVISION AND E. IDAHO STREET. REFERENCES SET THIS SURVEY; CENTER OF A FIRE HYDRANT AND AN X CHISELED ON SOUTHERLY RIM OF A SANITARY MANHOLE. MORROW COUNTY CORNER RESTORATION FORM FILED BY G. DENNIS EDWARDS, PLS 951, 12/31/2007

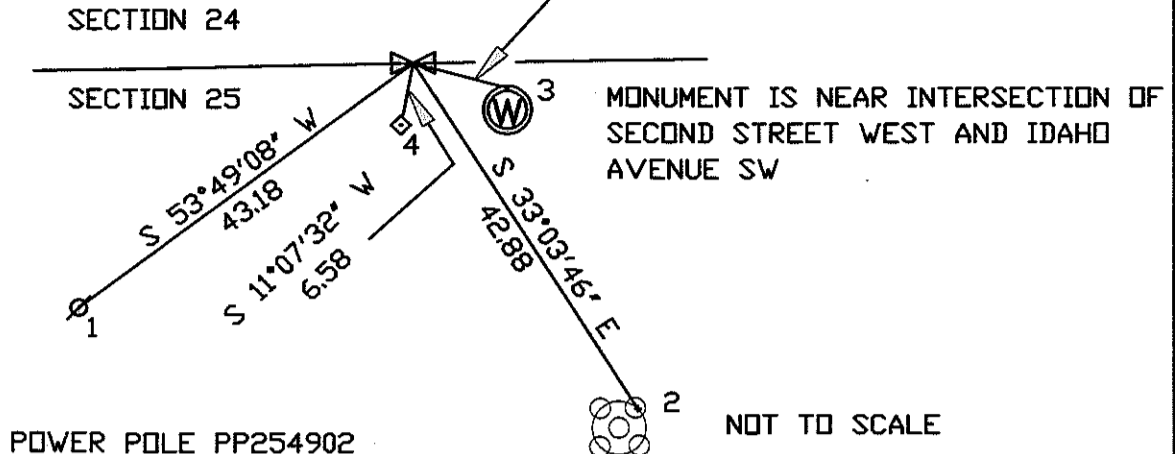


FOUND
2" DIA ALUMINUM CAP
BELOW ASPHALT SURFACE
PER (R1)

BASIS OF BEARING: OREGON NORTH STATE PLANE ZONE,
NAD 83 (2011).
USACE DISTANCES ARE GRID. AVERAGED
COMBINED SCALE FACTOR IS 0.99996634.
RECORD USACE AND NON-USACE DISTANCES ARE GROUND.

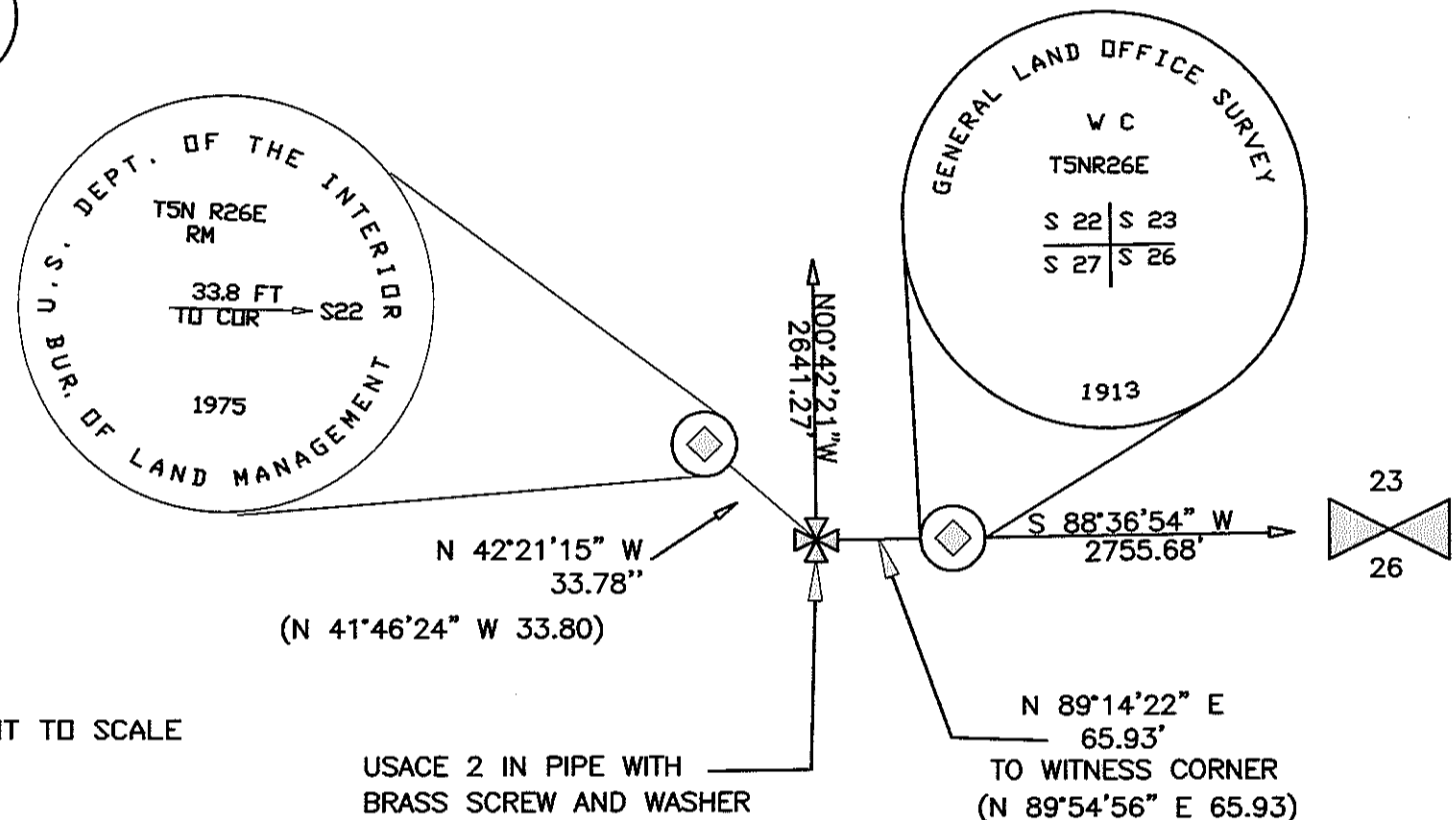
NAME: UNITED STATES/STATE PLANE 1983
DATUM: NAD 1983(2011)
ZONE: OREGON NORTH 3601
GEOID: GEOID12B
VERTICAL DATUM: NAVD 88
DISTANCE UNIT: International Foot

INSET 6-2

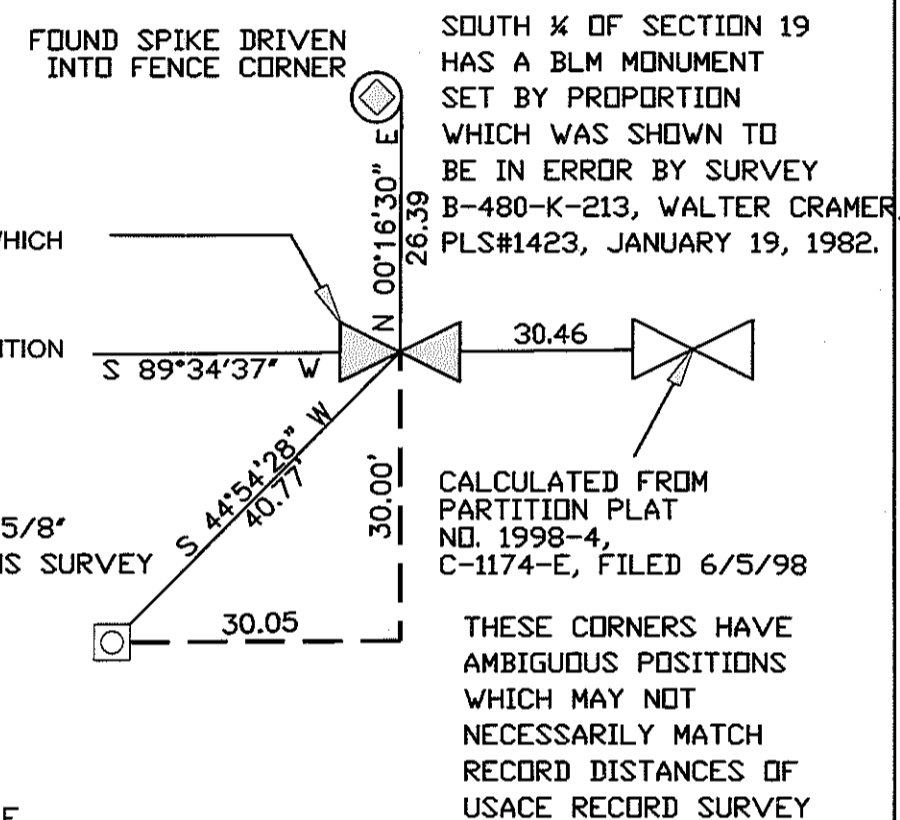


- 1 POWER POLE PP254902
- 2 FIRE HYDRANT NE MOST BASE FLANGE NUT
- 3 NORTH EDGE H2O VALVE LID
- 4 BORED HOLE IN ASPHALT WITH FERROUS METAL DETECTED HELD AS 1/4 IN A ROBERT H. STRATTON SURVEY #1547-C

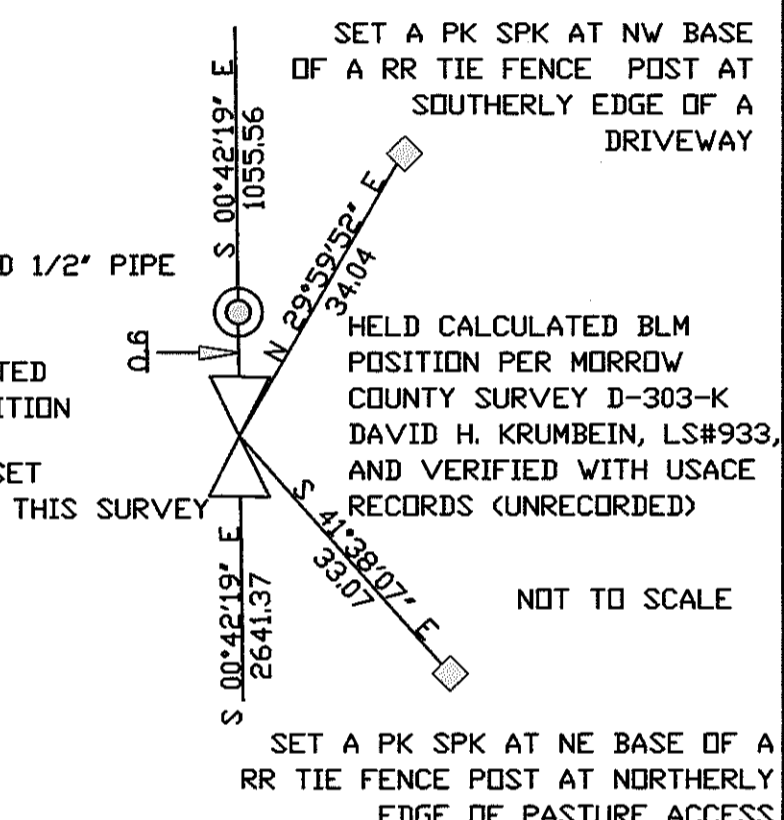
INSET 6-3



INSET 6-4

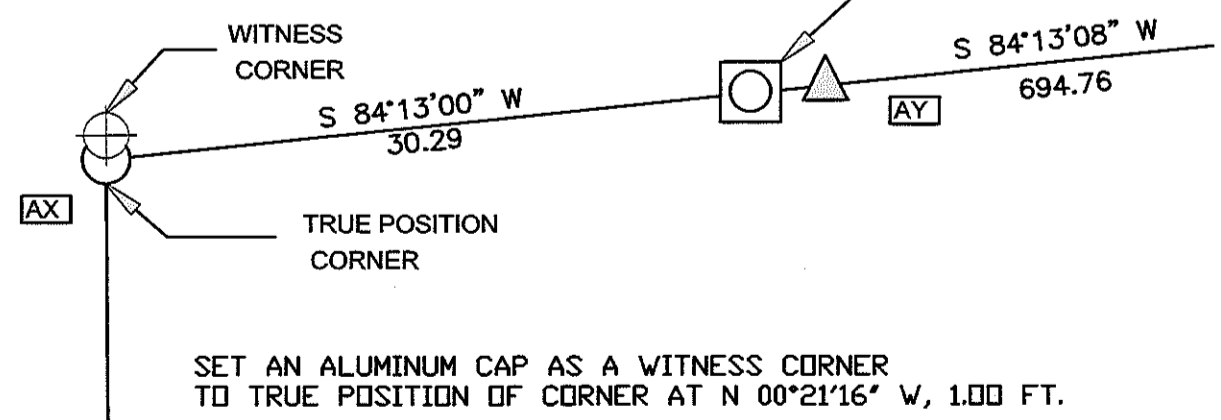


INSET 6-5



INSET 6-6

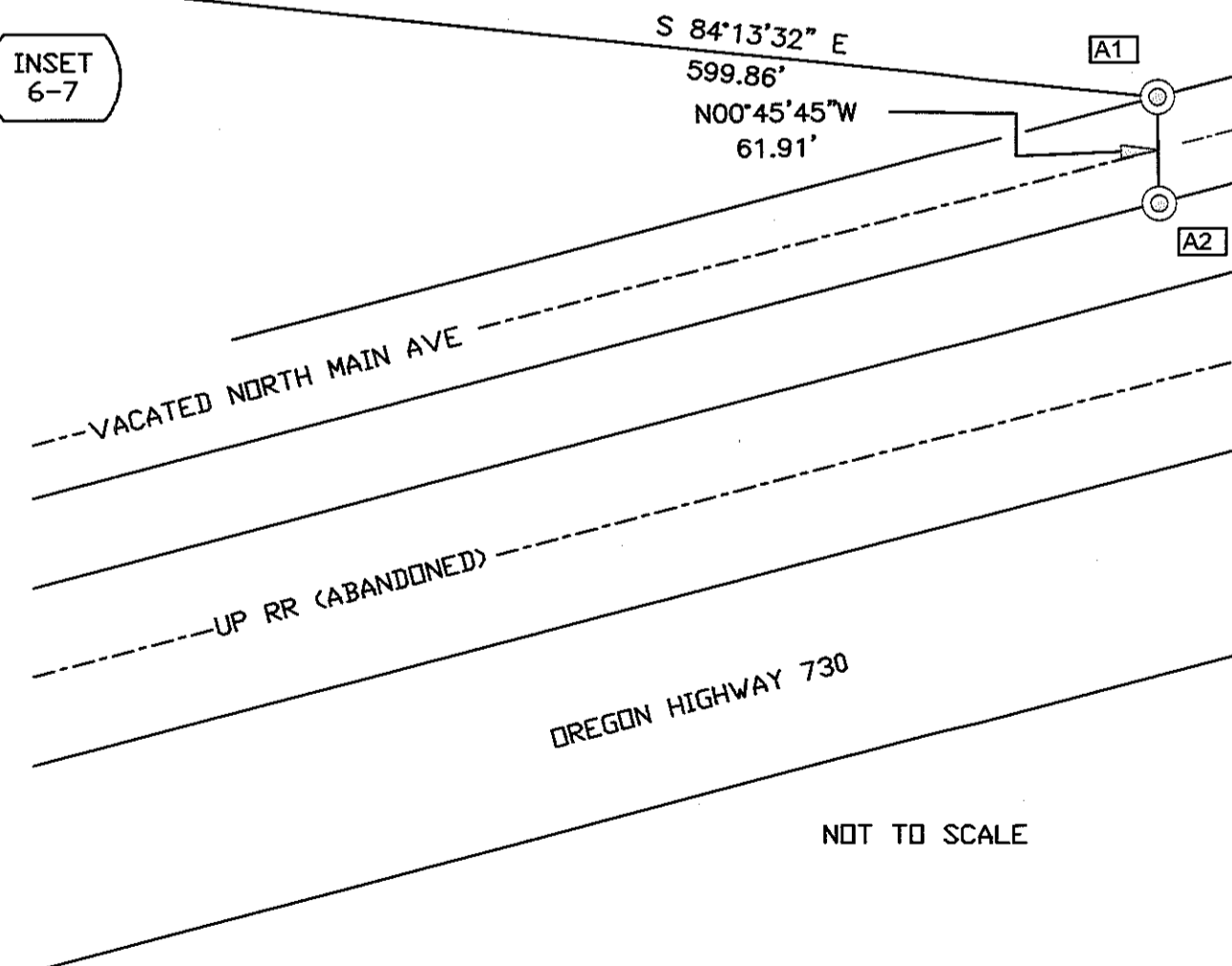
FOUND A YPC G. DENNIS EDWARDS, PLS 951, MORROW COUNTY RECORD OF SURVEY #2017-17956
S 85°22'21" W 3.15' FROM ORIGINAL USACE MONUMENT



SET AN ALUMINUM CAP AS A WITNESS CORNER TO TRUE POSITION OF CORNER AT N 00°21'16" W, 1.00 FT.

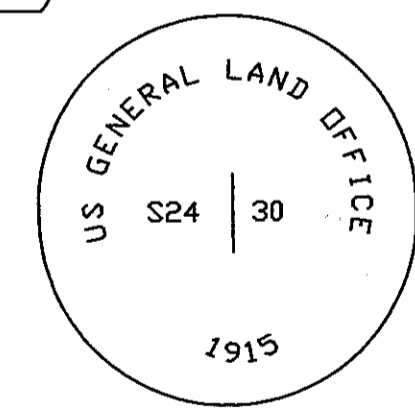
OREGON NORTH
NAD 83 (2011)
FOR ALL INSETS

INSET 6-7



HELD USACE MONUMENTS SHOWN WITHIN THIS INSET AS RIGHT OF WAY. MATCHES BLM METES AND BOUNDS SURVEY FILED 03/02/2002 IN MORROW COUNTY, NO. C-1341-M. A DISCREPANCY EXISTS WITH AN ADJACENT SURVEY PERFORMED BY EDWARDS SURVEYING, FILED AUG 12, 1983, PARTITION PLAT 2006-7, 1477-C, MORROW COUNTY. AS A RESULT, MORE WEIGHT WAS GIVEN TO USACE, EDWARDS SURVEY AND BLM POSITIONS IN ORDER TO MATCH THE ORIGINAL INTENT OF ORIGINAL USACE SURVEY AND BLM PER SAID SURVEY ABOVE.

INSET 6-8



A 2 1/2" BRASS CAP AFFIXED TO A SLIGHTLY BENT 1" X 1" TALL IRON PIPE.
NO ACCESSORIES AVAILABLE.

REGISTERED PROFESSIONAL LAND SURVEYOR
Clifford L. Bondurant
OREGON
JUNE 2, 2010
CLIFFORD L. BONDURANT
83881

RENEWAL DATE 12/31/2019



PREPARED FOR
U.S. ARMY CORPS OF ENGINEERS
333 SW FIRST AVE
PORTLAND OR 97204

DESIGNED BY: Michael F. Timlin	CKD BY: C.L.B.	FILE NUMBER:
DWN BY: C.L.B.	MFT	
SUBMITTED BY: Clifford L. Bondurant		
PLOT SCALE:	PLOT DATE:	
240.00 / ft.	4/10/2019	
SIZE:	FILE NAME:	
ARCH C	InrgonROS_20_Final.dgn	

U.S. ARMY
CORPS OF ENGINEERS
PORTLAND DISTRICT
333 SW FIRST AVE
PORTLAND OR 97204

RECORD OF SURVEY
JOHN DAY BOUNDARY
PORTIONS OF 5N 28E, SECTION 23
AND 24 AND 5N, 27E, SECTION 19,
WILLAMETTE MERIDIAN,
MORROW COUNTY, OREGON.

SHEET IDENTIFICATION

SHEET 6 OF 6

1865