

**SURVEY OF RESET MONUMENTS**

On the exterior boundary of Parcel 1  
 Morrow County Partiton Plat 2018-1  
 In the SW1/4 SE1/4 Section 10, T.4N., R.25E., W.M.  
 Morrow County, Oregon.  
 July 10, 2018

**NARRATIVE**

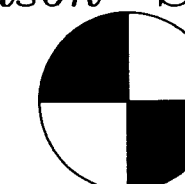
This plat was created at the request of Matt Scrivner, Morrow County Public Works Director, to show the re-monumentation of the corners of Parcel 1 of Morrow County Partiton Plat 2018-1.

During the course of leveling and grading the property, the existing pins were either buried or inadvertently removed.

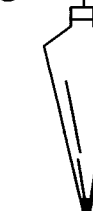
Prior to the start of the work, the pins were double tied and the average coordinates from those ties were used to reset monuments at the locations shown. Aluminum tablets are set in the concrete fence post footings as described in the legend.

This survey was performed using Topcon Hyper Lite and Hyper II gps systems.

Ferguson Surveying



Engineering



P.O. BOX 519, 210 E. MAIN  
 MT. VERNON, OR 97865  
 PHONE (541)932-4520  
 FAX (541)932-4430  
 EMAIL dfse@oretelco.net

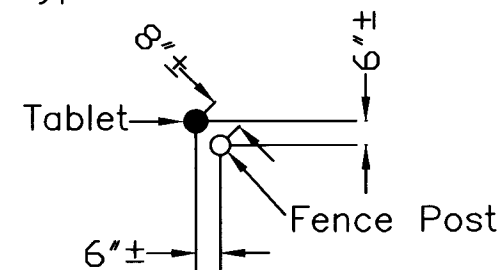
1842

**LEGEND**

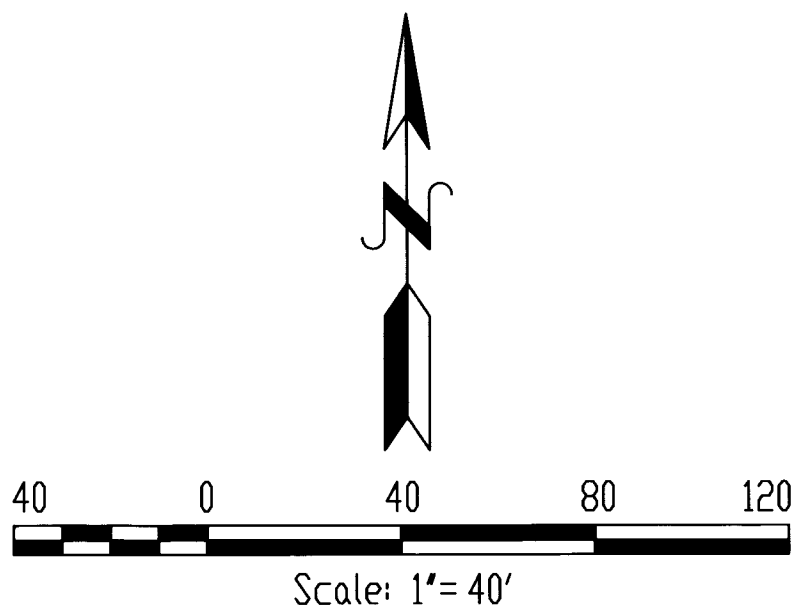
(bearing/distance) Record bearing/distance from Morrow County Partiton Plat 2018-1.

- Found 5/8" rebar pin with "WTS, 56295LS" cap as shown on Morrow County Partiton Plat 2018-1. Set a 3"x5/8" dia. aluminum tablet with an 1-1/2" dia. cap stamped "PLS 49865, 2018" in concrete fence post footing. See note at symbol.

Typical all corners

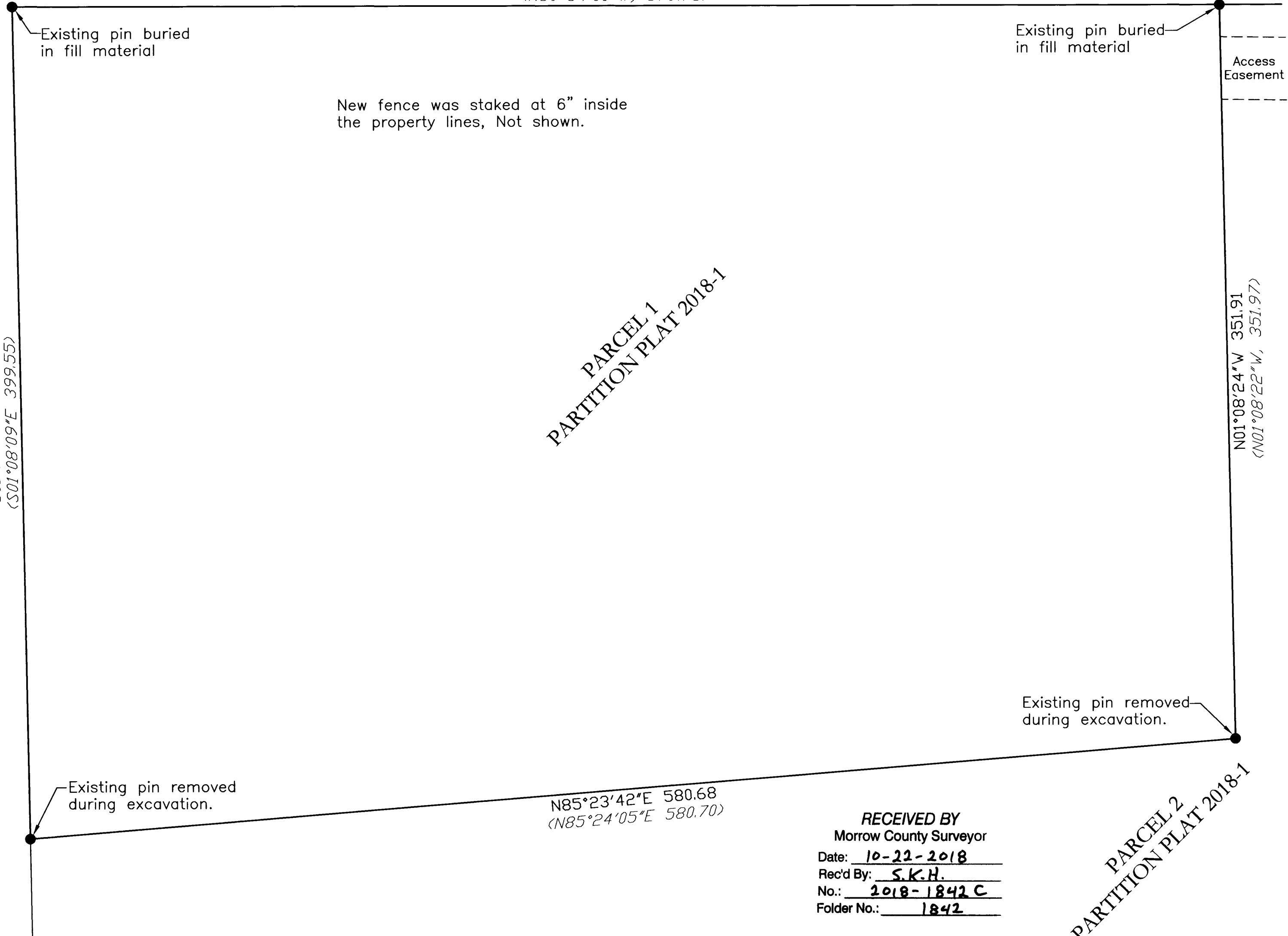


DETAIL  
 Not to Scale



BASIS OF BEARINGS: THE NORTH LINE OF  
 PARCEL 1, PARTITION PLAT 2018-1

**BASIS OF BEARINGS**  
 N89°54'00"W 579.76  
 (N89°54'00"W, 579.75)



REGISTERED  
 PROFESSIONAL  
 LAND SURVEYOR

*[Signature]*  
 OREGON  
 JULY 13, 1999  
 KENNETH H. DELANO JR.  
 49865  
 RENEWS: 1/1/2020

RECEIVED BY  
 Morrow County Surveyor  
 Date: 10-22-2018  
 Rec'd By: S.K.H.  
 No.: 2018-1842 C  
 Folder No.: 1842

1842