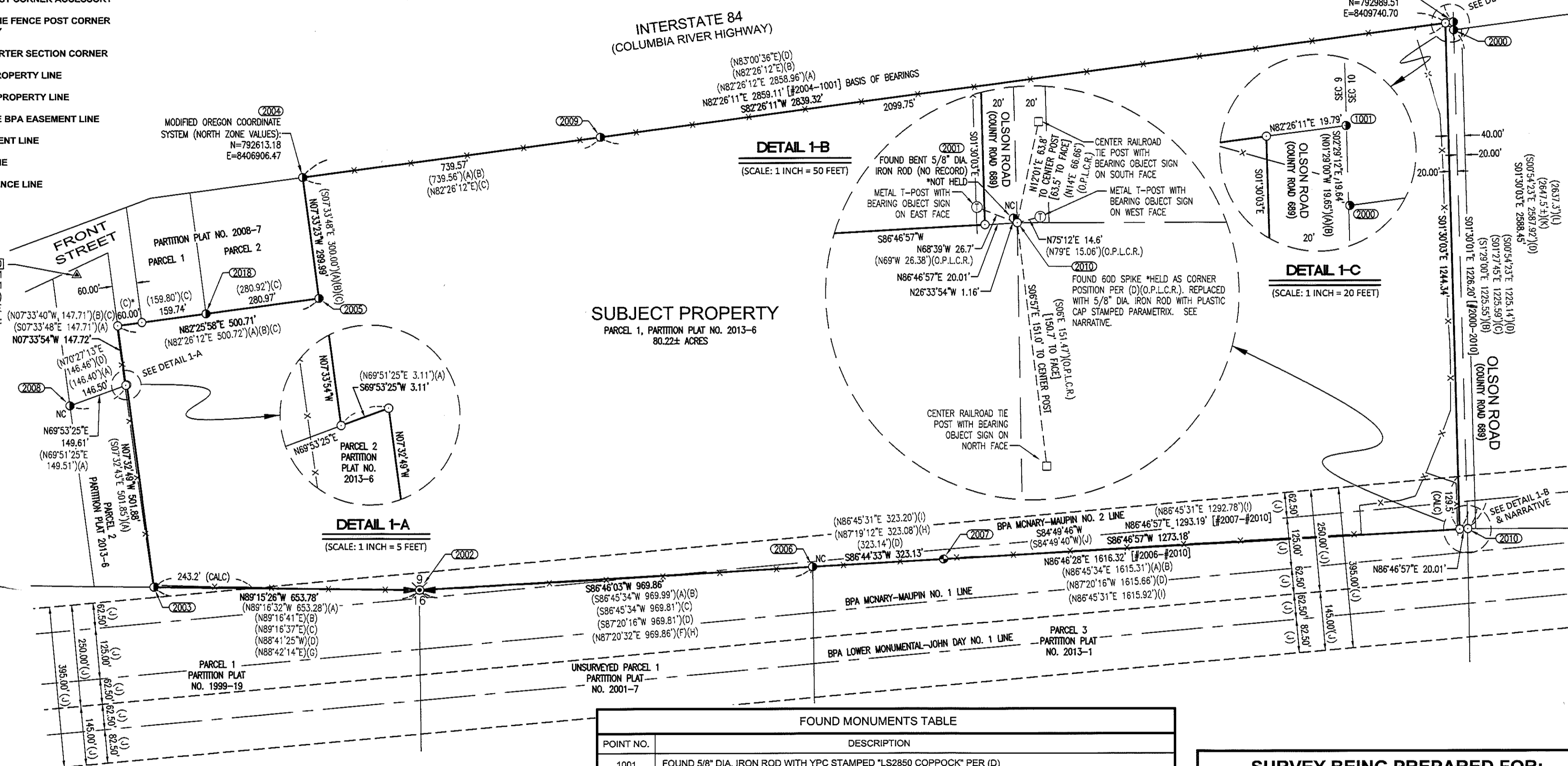


RECORD OF SURVEY

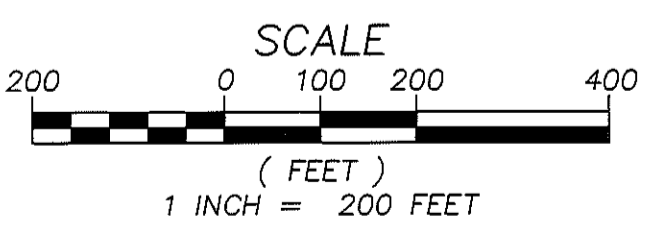
BOUNDARY SURVEY OF PARCEL 1, PARTITION PLAT NO. 2013-6
 LOCATED IN
 THE SOUTH HALF (S1/2) OF THE SOUTHEAST QUARTER (SE1/4) AND
 THE SOUTHWEST QUARTER (SE1/4) OF THE SOUTHWEST QUARTER (SW1/4)
 OF SECTION 9, TOWNSHIP 4 NORTH, RANGE 25 EAST, WILLAMETTE MERIDIAN,
 CITY OF BOARDMAN, MORROW COUNTY, OREGON
 SEPTEMBER, 2018

LEGEND

- XXXX FOUND 5/8" DIA. IRON ROD WITH CAP (SEE FOUND MONUMENTS TABLE)
- XXXX FOUND 5/8" DIA. IRON ROD (NO CAP) (SEE FOUND MONUMENTS TABLE)
- XXXX FOUND BRASS CAP MONUMENT (SEE FOUND MONUMENTS TABLE)
- XXXX FOUND BRASS SCREW AND WASHER (SEE FOUND MONUMENTS TABLE)
- ▲ XXXX CONTROL POINT (SEE CONTROL TABLE)
- SET 5/8" IRON ROD WITH YELLOW PLASTIC MARKED PARAMETRIX
- Ⓜ METAL T-POST CORNER ACCESSORY
- RAILROAD TIE FENCE POST CORNER ACCESSORY
- ⊕ FOUND QUARTER SECTION CORNER
- SUBJECT PROPERTY LINE
- ADJACENT PROPERTY LINE
- - - CENTERLINE BPA EASEMENT LINE
- - - BPA EASEMENT LINE
- - - SECTION LINE
- - - EXISTING FENCE LINE
- RPC RED PLASTIC CAP
- YPC YELLOW PLASTIC CAP
- () RECORD DATA PER REFERENCE NOTED (SEE SHEET 2 FOR REFERENCE TABLE)
- () MEASURED DATA SAME AS RECORD
- (CALC) CALCULATED MEASUREMENT
- O.P.L.C.R. OREGON PUBLIC LAND CORNER REPORT DATED DECEMBER 12, 2012 BY JUDSON L. COPPOCK, PLS 2850, J-13



REGISTERED PROFESSIONAL LAND SURVEYOR
Scott C. Bolduc
 OREGON JULY 20, 2009
 SCOTT C. BOLDUC
 79288
 EXPIRES: 12/31/2019



RECEIVED BY
 Morrow County Surveyor
 Date: 9-20-2018
 Rec'd By: S.K.H.
 No.: 2018-1839C
 Folder No.: 1839

POINT NO.	NORTHING	EASTING	DESCRIPTION
1000	792375.11	8406349.01	FOUND 1/2" DIA. IRON ROD WITH RPC MARKED "APA CONTROL"

POINT NO.	DESCRIPTION
1001	FOUND 5/8" DIA. IRON ROD WITH YPC STAMPED "LS2850 COPPOCK" PER (D)
2000	FOUND 5/8" DIA. IRON ROD WITH YPC STAMPED "LS2850 COPPOCK" PER (D)
2001	FOUND 5/8" DIA. IRON ROD (NO RECORD), BENT NORTHERLY, TIED AT POINT OF ENTRY *SEE NARRATIVE
2002	FOUND BRASS SCREW AND WASHER U.S.C.O.E.
2003	FOUND 5/8" DIA. IRON ROD WITH YPC STAMPED "RV MCKINNEY PLS2431" PER (A)
2004	FOUND 5/8" DIA. IRON ROD WITH YPC STAMPED "GBW WA30440 OR2817LS" PER (C)
2005	FOUND 5/8" DIA. IRON ROD WITH YPC STAMPED "GBW WA30440 OR2817LS" PER (C)
2006	FOUND 5/8" DIA. IRON ROD PER (I)
2007	FOUND 2-1/2" DIA. BRASS CAP ON STEEL PIPE UP 0.3 FEET STAMPED "T4N R25E E1/16 S9 S16 1978 LS 933" PER (I)
2008	FOUND 5/8" DIA. IRON ROD AS SHOWN ON (D)
2009	FOUND 5/8" DIA. IRON ROD WITH ALUMINUM CAP STAMPED "ODOT STA. 1427+17.98" AS SHOWN ON (D)
2010	FOUND 60D SPIKE. REPLACED WITH 5/8" DIA. IRON ROD WITH YELLOW PLASTIC CAP. *SEE NARRATIVE
2017	FOUND BRASS SCREW AND WASHER U.S.C.O.E.
2018	FOUND 5/8" DIA. IRON ROD WITH YPC STAMPED "GBW WA 304440 OR 02817" PER (C)

SURVEY BEING PREPARED FOR:
AWS

Parametrix
 ENGINEERING . PLANNING . ENVIRONMENTAL SCIENCES

150 NW PACIFIC PARK LANE, SUITE 110 | BEND, OR 97702
 P 541.508.7710
 WWW.PARAMETRIX.COM

PMX JOB NO. 233-8117-001

SURVEYED	RAJ/MAD/BS	ONE INCH AT FULL SCALE. IF NOT, SCALE ACCORDINGLY.
DRAWN	MAD/RAJ	
CHECKED	SCB	SCALE 1" = 200'
APPROVED	ANH	DATE SEPTEMBER 12, 2018

SHEET NO. 1 OF 2

1839

RECORD OF SURVEY

BOUNDARY SURVEY OF PARCEL 1, PARTITION PLAT NO. 2013-6
LOCATED IN
THE SOUTH HALF (S1/2) OF THE SOUTHEAST QUARTER (SE1/4) AND
THE SOUTHEAST QUARTER (SE1/4) OF THE SOUTHWEST QUARTER (SW1/4)
OF SECTION 9, TOWNSHIP 4 NORTH, RANGE 25 EAST, WILLAMETTE MERIDIAN,
CITY OF BOARDMAN, MORROW COUNTY, OREGON
SEPTEMBER, 2018

NARRATIVE

THE PURPOSE OF THIS SURVEY WAS TO RETRACE AND MONUMENT THE BOUNDARY OF THE SUBJECT PROPERTY (PARCEL 1, PARTITION PLAT NO. 2013-6). FIELD WORK WAS COMPLETED IN SEPTEMBER OF 2018.

SEVERAL CORNER MONUMENTS OF RECORD (AS SHOWN ON SAID PARTITION PLAT NO. 2013-6) IN THE VICINITY OF THE NW CORNER OF THE PROPERTY WERE NOT RECOVERED. A COMPASS ADJUSTMENT OF THE RECORD COURSES FROM PARTITION PLAT NO. 2013-6 WAS APPLIED BETWEEN RECOVERED MONUMENTS #2018 AND #2003 TO CALCULATE THESE MISSING CORNER POSITIONS. THE RESULTING COURSES MATCHED THE RECORD DIMENSIONS WELL WITHIN REASON.

DIFFICULTY WAS ENCOUNTERED WHEN TRYING TO RE-ESTABLISH THE SOUTHEAST CORNER OF THE PROPERTY. AS DISCOVERED DURING THIS SURVEY AND EVIDENCED BY SEVERAL PREVIOUS SURVEYS OF RECORD, UNCERTAINTIES EXIST AS TO THE TRUE LOCATION OF THE SECTION CORNER COMMON TO SECTIONS 9, 10, 15 & 16. PER PARTITION PLAT NO. 2013-6, THIS CORNER POSITION CONTROLS THE LOCATION OF THE SOUTHEAST CORNER OF THE SUBJECT PROPERTY AND THE RIGHT-OF-WAY LOCATION OF OLSON ROAD, AS SHOWN ON SAID PARTITION PLAT. THE FOLLOWING IS A SUMMARY OF RESEARCH AND FINDINGS RELATING TO THIS PARTICULAR CORNER:

THE ORIGINAL PLAT AND FIELD NOTES FOR TOWNSHIP 4 NORTH, RANGE 25 EAST, W.M. (APPROVED BY THE SURVEYOR GENERAL OF OREGON ON JANUARY 8TH, 1870) INDICATE THAT A POST WAS INITIALLY ESTABLISHED FOR THIS CORNER. PER THE ORIGINAL FIELD NOTES, NO ACCESSORIES WERE ESTABLISHED.

THE LAST RECOVERY OF THIS ORIGINAL CORNER POST OCCURRED IN 1920 DURING A PRELIMINARY SURVEY BY J.W. KIRSCHNER, COUNTY SURVEYOR, FOR A ROAD PETITIONED BY ADOLF SKOUBO AND OTHERS (OLSON ROAD). KIRSCHNER REPORTED FINDING "A 4x4 POST, PROPERLY MARKED" AT THE CORNER POSITION. KIRSCHNER REPORTS THE DISTANCE BETWEEN THE CORNER TO SECTIONS 9-10-15-16 AND THE 1/4 CORNER BETWEEN SECTIONS 9 & 10 TO BE 2,637.3 FEET. OLSEN ROAD (COUNTY ROAD #689) WAS OFFICIALLY ESTABLISHED IN COMMISSIONER'S JOURNAL F, PAGE 214 ON MARCH 4, 1920.

PER AN ARMY CORPS OF ENGINEERS (USACE) CADASTRAL RETRACEMENT RECORD DATED JUNE, 1949, A BRASS SCREW AND WASHER WAS ESTABLISHED IN THE CENTER OF A BLACK TOPPED ROAD AT THE INTERSECTION OF FENCE LINES. STATE PLANE COORDINATES (LAMBERT, OREGON, NORTH) WERE PROVIDED FOR THIS CORNER ON THE CADASTRAL RETRACEMENT RECORD. THE USACE ALSO ESTABLISHED SEVERAL INTER-RELATED PLSS CORNERS, SUCH AS THE EAST (#2017) AND SOUTH (#2002) QUARTER CORNERS FOR SECTION 9. BOTH OF THESE MONUMENTS WERE RECOVERED IN GOOD CONDITION DURING THIS SURVEY.

IN SEPTEMBER 1951, THE BONNEVILLE POWER ADMINISTRATION UTILIZED PAROLE EVIDENCE FROM THE ADJACENT PROPERTY OWNER (ADOLPH SKOUBO) TO ESTABLISH A HUB & TACK AT THE APPROXIMATE CORNER POSITION. THE HUB & TACK WAS ESTABLISHED ALONG THE CENTERLINE OF THE AS-CONSTRUCTED ROAD, USING RELATIONSHIPS TO FENCE LINES BASED UPON MR. SKOUBO'S MEMORY. A NOTE ON THE BPA CADASTRAL RETRACEMENT RECORD INDICATES THAT "THERE IS A POSSIBILITY THAT THE SEC COR MIGHT BE 4' OR 5' DUE E. FROM THE POINT" BASED ON CENTERING THE NORTH-SOUTH SECTION LINE BETWEEN FENCE LINES ON THE WESTERLY AND EASTERLY SIDES OF THE ROADWAY. NO MENTION IS MADE OF THE USACE MONUMENT ESTABLISHED TWO YEARS PRIOR.

ON A 1978 MAP ENTITLED "SURVEY FOR HOMER PRICHARD" (I) BY DAVID M. KRUMBEIN, PLS, MR. KRUMBEIN SHOWS THAT HE FOUND AND HELD A PK NAIL FOR THE SECTION CORNER. THIS MAP MAKES NO MENTION REGARDING THE ORIGINS OF THIS PK NAIL.

IN 2006, JUDSON L. COPPOCK, PLS, STATES THAT THE "MONUMENT WAS DESTROYED BY ROAD IMPROVEMENT. SET BRASS CAP FROM RECORD" AS SHOWN ON COUNTY SURVEY 1483C (D). SIX YEARS LATER, MR. COPPOCK FILED AN OREGON PUBLIC LAND CORNER REPORT/RESTORATION REPORT DATED DECEMBER 12, 2012 FOR THIS CORNER. MR. COPPOCK STATES THAT HE SET A 2" I.D. X 30" GALVANIZED PIPE WITH 2-3/8" BRASS CAP AT THE CORNER BASED ON KRUMBEIN'S 1975 SURVEY FOR HOMER PRICHARD (I). MR. COPPOCK ALSO ESTABLISHED (4) NEW ACCESSORIES FOR THIS CORNER POSITION. SINCE 2006, THERE HAVE BEEN SEVERAL SURVEYS SHOWING THE RECOVERY OF COPPOCK'S BRASS CAP MONUMENT, INCLUDING PARTITION PLAT NO. 2008-7 (C), PARTITION PLAT NO. 2013-1 (B) & PARTITION PLAT NO. 2013-6 (A).

IN 2012, G. DENNIS EDWARDS FILED A MAP "SHOWING RECORD MONUMENTS AND RECORD DISTANCES ON THE SECTION LINES RUNNING FROM THE CORNER COMMON TO SECTIONS 15, 16, 21 AND 22 NORTH TO THE CORNER COMMON TO SECTIONS 3, 4, 9 AND 10", DEPICTING "DISCREPANCIES BETWEEN RECENT SURVEYS AND THE ORIGINAL G.L.O. SURVEYS". THIS MAP HIGHLIGHTS THE DISCREPANCIES BETWEEN THE CURRENT PERPETUATION OF THE ORIGINAL KRUMBEIN MONUMENT LOCATION AND THE LOCATION UTILIZING PROPORTIONED GLO DISTANCES BETWEEN ACCEPTED MONUMENTS NORTH AND SOUTH OF THIS CORNER. EDWARDS PROPORTIONED CORNER FALLS 59.7± SOUTH OF THE CALCULATED POSITION FOR COPPOCK'S SECTION CORNER MONUMENT.

DURING A DILIGENT SEARCH OF THE AREA SURROUNDING THE CALCULATED SECTION CORNER POSITION, WE RECOVERED A BENT 5/8" DIAMETER IRON ROD AND CAREFULLY EXCAVATED AROUND THE BENT IRON ROD TO IDENTIFY AND LOCATE THE POINT OF VERTICALITY FOR THIS DISTURBED MONUMENT. WE ALSO FOUND A 60D SPIKE IN GOOD CONDITION BEARING SOUTHEASTERLY, 1.16 FEET FROM THE IRON ROD. THE SPIKE FALLS APPROXIMATELY 2'-3" EASTERLY OF THE APPROXIMATE CENTERLINE OF THE CURRENT GRAVEL ROAD. THE CORNER ACCESSORIES PER MR. COPPOCK'S OREGON PUBLIC LAND CORNER REPORT/RESTORATION REPORT DATED DECEMBER 12, 2012 WERE ALSO RECOVERED AND TIED. BECAUSE OF UNCERTAINTIES RELATED TO THE EXACT BEARING OBJECT REFERENCE POINTS, ALONG WITH DISCREPANCIES BETWEEN MEASURED AND RECORD DISTANCES FROM THE BEARING OBJECTS, THE CORNER POSITION COULD NOT BE DETERMINED WITH ANY CERTAINTY FROM THESE ACCESSORIES.

NARRATIVE (CONT.)

AFTER TYING SAID IRON ROD AND 60D SPIKE, IT WAS DECIDED TO REMOVE THESE MONUMENTS. IN ORDER TO SEARCH THE AREA FOR THE BRASS CAP MONUMENT SUPPOSEDLY SET BY COPPOCK IN 2006 PER COUNTY SURVEY 1483C (D). WE WERE UNABLE TO FIND COPPOCK'S BRASS CAP MONUMENT AFTER A THOROUGH SEARCH OF THE AREA. ACCORDING TO THE MORROW COUNTY SURVEYOR, MR. COPPOCK OFTEN SET SPIKES AT CORNERS WHERE HE REPORTED SETTING BRASS CAP MONUMENTS. BECAUSE THE CORNER LOCATION LANDS WITHIN A COUNTY ROADWAY, THERE'S A POSSIBILITY THAT COPPOCK'S BRASS CAP MONUMENT WAS DESTROYED WITHIN THE LAST 5 YEARS BY ROAD CONSTRUCTION OR MAINTENANCE ACTIVITIES AND THE IRON ROD AND SPIKE EITHER SURVIVED OR WERE SET WITHIN THIS TIME PERIOD AS WELL, BUT BASED ON INFORMATION PROVIDED BY THE MORROW COUNTY SURVEYOR, I BELIEVE THE RECOVERED 60D SPIKE BEST REPRESENTS THE INTENDED SECTION CORNER LOCATION PER PARTITION PLAT NO. 2008-7 (C), PARTITION PLAT NO. 2013-1 (B) & PARTITION PLAT NO. 2013-6 (A). WE THEREFORE PERPETUATED THE POSITION OF THE RECOVERED 60D SPIKE WITH A 5/8" DIAMETER IRON ROD WITH YELLOW PLASTIC CAP STAMPED PARAMETRIX. COPPOCK'S CORNER ACCESSORIES WERE LEFT UNALTERED.

THE CENTERLINE OF OLSON ROAD WAS HELD AS THE SECTION LINE BETWEEN RECOVERED MONUMENTS #2010 AND #2017. THE NORTHERLY AND SOUTHERLY PROPERTY LINES WERE MONUMENTED AT THEIR RESPECTIVE POINTS OF INTERSECTION WITH A LINE BEING 20 FEET FROM, WHEN MEASURED AT RIGHT ANGLES TO, THE CENTERLINE OF OLSEN ROAD AS DESCRIBED ABOVE.

ALL OTHER MONUMENTS AS SHOWN ON PARTITION PLAT NO. 2013-6 WERE HELD AS SHOWN HEREON.

THE BPA RIGHTS-OF-WAY SHOWN HEREON ARE APPROXIMATE AND SHOWN FOR INFORMATIONAL PURPOSES ONLY. WIDTHS BETWEEN THE CENTERLINE AND RIGHT-OF-WAY LINES FOR THE MCNARY-MAUPIN LINE NO. 1, MCNARY-MAUPIN LINE NO. 2 & LOWER MONUMENTAL - JOHN DAY NO. 1 LINE WERE HELD AS SHOWN ON THE MAP TITLED LOWER MONUMENTAL - JOHN DAY NO. 1 500 KV TRANSMISSION LINE, MILE 83 FROM LOWER MONUMENTAL, BY BONNEVILLE POWER ADMINISTRATION, DRAWING 129683-1-18 (UNRECORDED). THE RECORD SHAPES FOR THE RIGHTS-OF-WAY WERE ORIENTATED HOLDING A DISTANCE OF 415.9 FEET ALONG THE WEST LINE OF SECTION 16 FROM THE CALCULATED NW CORNER OF SECTION 16, TO THE CENTERLINE OF THE MCNARY-MAUPIN LINE NO. 1 AS SHOWN ON AFOREMENTIONED BPA MAP. THE RECORD SHAPE OF THE RIGHTS-OF-WAY WERE THEN ROTATED TO A BEST FIT OF CENTER TOWER LOCATIONS ON THE MCNARY-MAUPIN LINES ON OPPOSITE SIDES OF THE LINE COMMON TO SECTIONS 15 & 16. INTERMEDIATE TOWER LOCATIONS WERE FOUND TO FIT WELL WITH THIS SOLUTION. NO BPA MONUMENTS WERE RECOVERED ALONG THE RIGHT-OF-WAY CENTERLINES.

NO OTHER UNUSUAL CIRCUMSTANCES WERE ENCOUNTERED DURING THE COURSE OF THIS SURVEY.

COORDINATES ARE BASED ON OREGON COORDINATE SYSTEM OF 1983 (NORTH ZONE) VALUES, INT. FT., SCALED TO GROUND USING A COMBINED FACTOR OF 1.0000484655 APPLIED AT POINT #1000:

LATITUDE: N45°50'14.15569"
LONGITUDE: W119°41'55.06691"
HEIGHT: 233.6 FT
NORTH AMERICAN DATUM OF 1983 (NAD83)(2011)

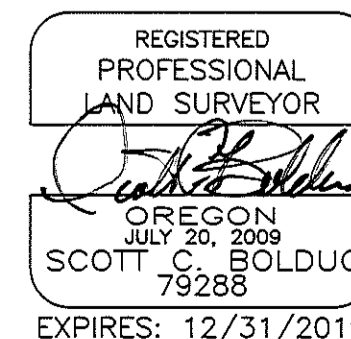
THE BASIS OF BEARINGS FOR THIS SURVEY IS NORTH 82°26'11" EAST BETWEEN FOUND MONUMENTS #2004 AND #1001, BASED ON GPS DERIVED COORDINATE VALUES.

REFERENCES

- (A) PARTITION PLAT NO. 2013-6 FOR FRONTIER MOBILE HOME PARK, BY R.V. MCKINNIS ENGINEERING, FILED 07/03/2013 IN MORROW COUNTY SURVEYOR'S OFFICE AS COUNTY SURVEY NO. 2013-32C.
- (B) PARTITION PLAT NO. 2013-1 FOR KRUPA LAXMI, INC., BY ROGERS SURVEYING INC., FILED 02/07/2013 IN MORROW COUNTY SURVEYOR'S OFFICE AS 2013-16C.
- (C) PARTITION PLAT NO. 2008-7 FOR KRUPA LAXMI, INC., BY ROGERS SURVEYING INC., FILED 06/24/2008 IN MORROW COUNTY SURVEYOR'S OFFICE AS 1529C.
- (D) BOUNDARY SURVEY FOR DOCKEN AND PRICHARD, BY COPPOCK SURVEYING, FILED 11/14/2006 IN MORROW COUNTY SURVEYOR'S OFFICE AS 1483C.
- (E) PARTITION PLAT NO. 2001-7 FOR MR. BOB WEBSTER, BY HADDOCK SURVEYING, FILED 08/01/2001 IN MORROW COUNTY SURVEYOR'S OFFICE AS 1313C.
- (F) TRADEWINDS SUBDIVISION PHASE I FOR R.C. HANES LTD., BY WILLIAM R. WELLS, PLS, FILED 07/2000 IN MORROW COUNTY SURVEYOR'S OFFICE AS 1271C.
- (G) PARTITION PLAT NO. 1999-19 FOR AARON HOEFT, BY WILLIAM R. WELLS, PLS, FILED 11/1999 IN MORROW COUNTY SURVEYOR'S OFFICE AS 1238C.
- (H) RECORD OF SURVEY FOR AARON HOEFT, BY WILLIAM R. WELLS, PLS, FILED 05/1999 IN MORROW COUNTY SURVEYOR'S OFFICE AS 1217D.
- (I) SURVEY FOR HOMER PRICHARD, BY KRUMBEIN ENGINEERING CO., FILED 05/1978 IN MORROW COUNTY SURVEYOR'S OFFICE AS 77C.
- (J) LOWER MONUMENTAL - JOHN DAY NO. 1 500 KV TRANSMISSION LINE, MILE 83 FROM LOWER MONUMENTAL, BY BONNEVILLE POWER ADMINISTRATION, DRAWING 129683-1-18 (UNRECORDED).
- (K) MAP OF MONUMENTS IN SEC. 9, 10, 15 & 16, BY G. DENNIS EDWARDS, PLS, FILED 11/23/2012 IN MORROW COUNTY SURVEYOR'S OFFICE AS 1659B.
- (L) NOTES FROM A PRELIMINARY SURVEY OF ROAD PETITIONED FOR BY ADOLPH SKOUBO AND OTHERS (COUNTY ROAD SURVEY #373), BY J.W. KIRSCHNER, MORROW COUNTY SURVEYOR, DATED FEBRUARY 19, 1920.

RECEIVED BY
Morrow County Surveyor

Date: 9-20-2018
Rec'd By: S.K.H.
No.: 2018-1839C
Folder No.: 1839



SURVEY BEING PREPARED FOR:	
AWS	
Parametrix ENGINEERING . PLANNING . ENVIRONMENTAL SCIENCES	
150 NW PACIFIC PARK LANE, SUITE 110 BEND, OR 97702 P 541.508.7710 WWW.PARAMETRIX.COM	
PMX JOB NO. <u>233-8117-001</u>	
SURVEYED	RAJ/MAD/BS
DRAWN	MAD/RAJ
CHECKED	SCB
APPROVED	ANH
ONE INCH AT FULL SCALE. IF NOT, SCALE ACCORDINGLY	
SCALE N/A	
DATE SEPTEMBER 12, 2018	
SHEET NO. 2 OF 2	

1839