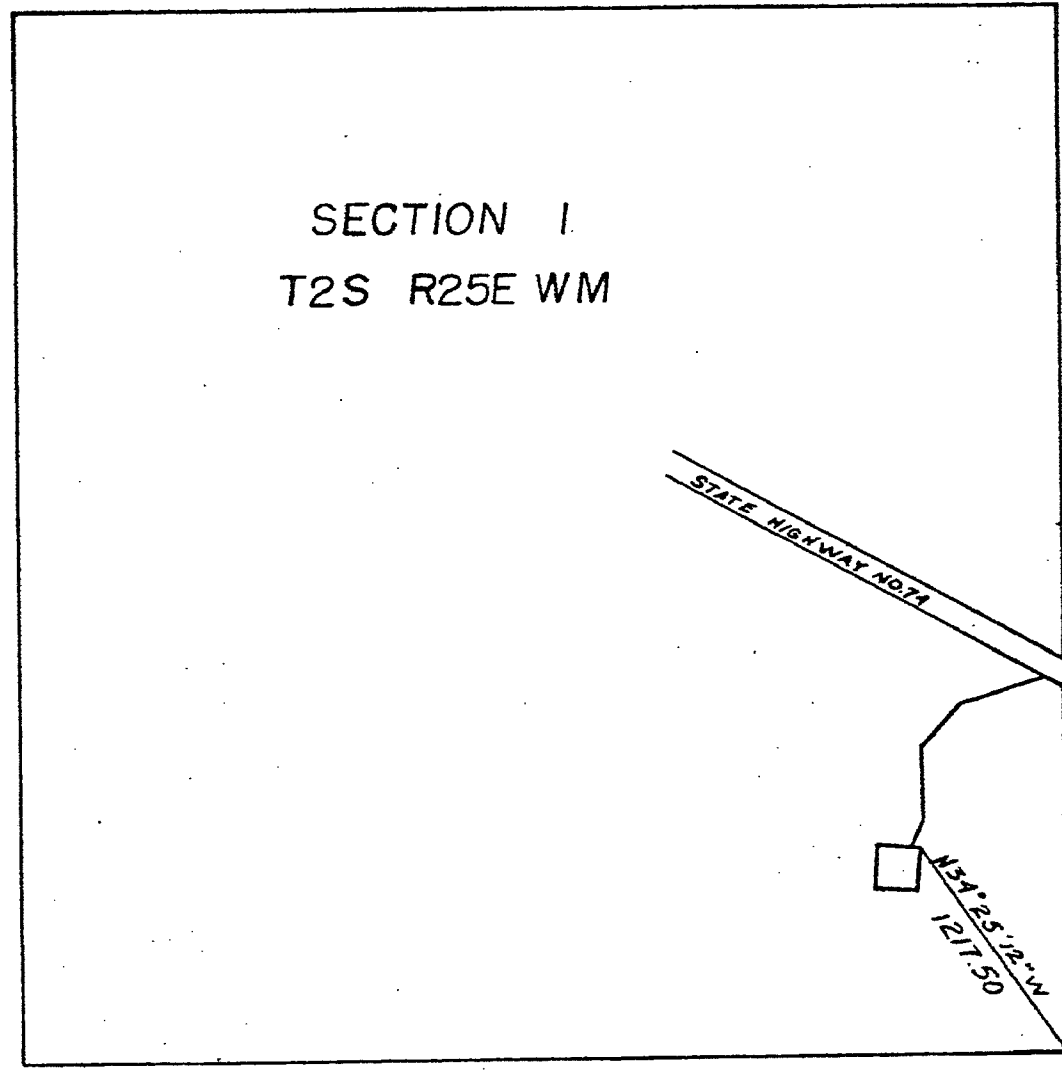
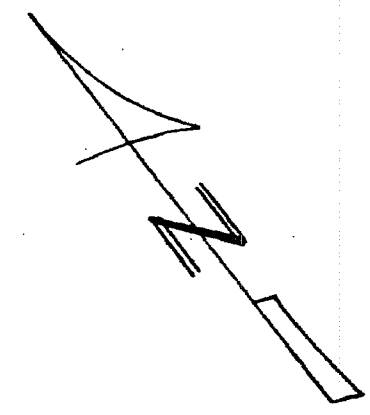
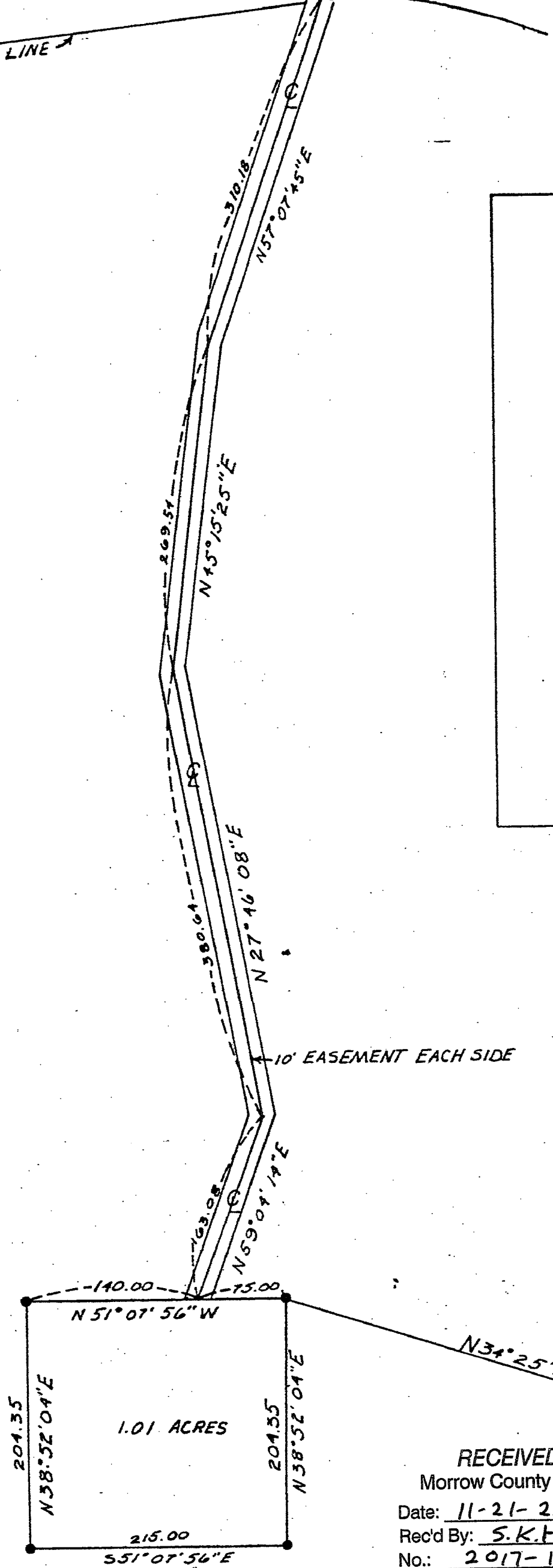


STATE HIGHWAY NO. 74
SOUTH R/W LINE

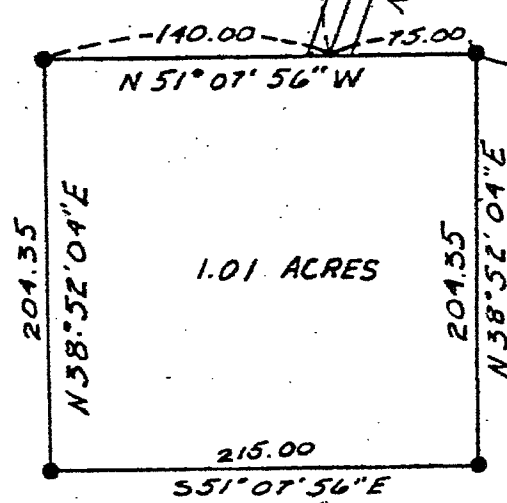


LOCATION MAP
SCALE 1 1/2" = 1000'



NOTE
BEARINGS BASED ON STATE HIGHWAY NO. 74
SECTION CORNER COMPUTED FROM STATE HIGHWAY DATA

LEGEND
● SET 5/8" IRON PIN



SCALE 1" = 100'

RECEIVED BY
Morrow County Surveyor
Date: 11-21-2017
Rec'd By: S.K.H.
No.: 2017-1818C
Folder No.: 1818

David H. Kulis
DAVID H. KULIS

SURVEY FOR		WAYNE HARRIS CO INC			
JAMES BLOODWORTH		ENGINEERS SURVEYORS		PENDLETON OREGON	
SCALE	AS NOTED	DNG BY	J KM	DRNG NO	
DATE	6-18-75	CKD BY	DHK	75-331A	
PARCEL IN SE 1/4 SECTION 1 T2S R25E WM					