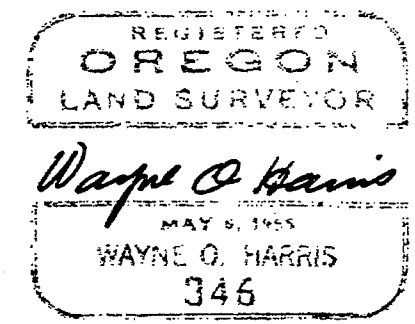
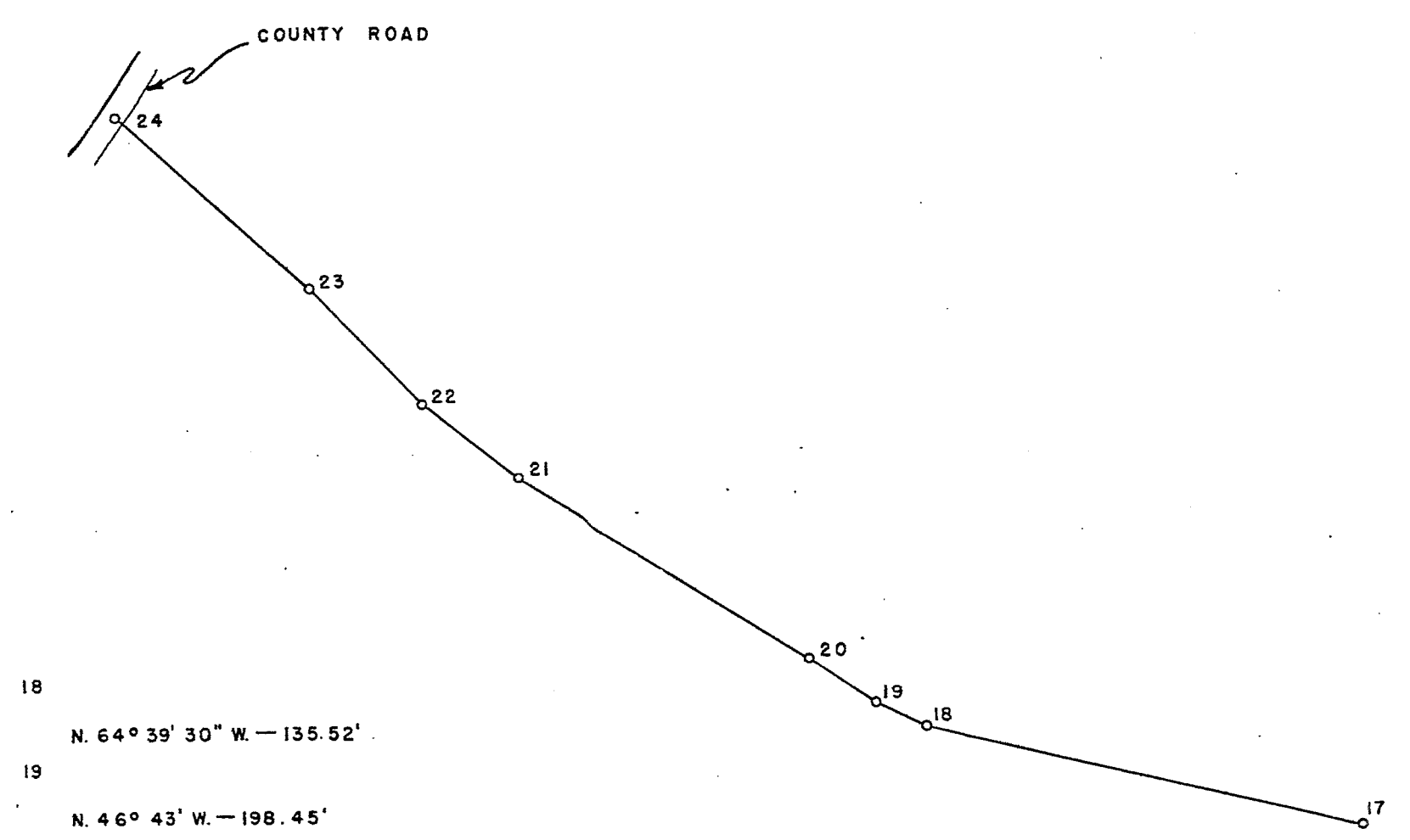


NOTE:
The ratio of difference, for both sides of the section, between the original calls and the chained extensions indicate that the rock cribs are substantially correct, and I have accepted them as the corners designated.

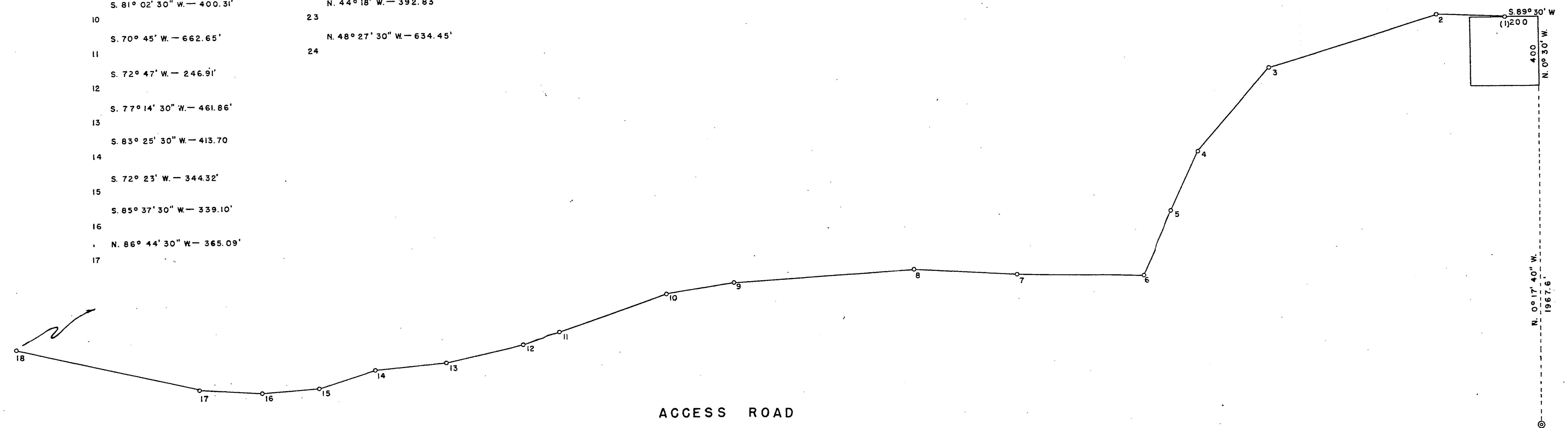
Wayne O. Harris
Wayne O. Harris



- ACCESS ROAD DATA:
- 1 N. 87° 55' W. - 397.84'
 - 2 S. 72° 42' W. - 1023.44'
 - 3 S. 40° 53' W. - 639.00'
 - 4 S. 25° 01' W. - 376.08'
 - 5 S. 24° 33' 30" W. - 417.89'
 - 6 N. 89° 19' W. - 738.78'
 - 7 N. 87° 11' 30" W. - 602.73'
 - 8 S. 85° 57' W. - 1030.25'
 - 9 S. 81° 02' 30" W. - 400.31'
 - 10 S. 70° 45' W. - 662.65'
 - 11 S. 72° 47' W. - 246.91'
 - 12 S. 77° 14' 30" W. - 461.86'
 - 13 S. 83° 25' 30" W. - 413.70'
 - 14 S. 72° 23' W. - 344.32'
 - 15 S. 85° 37' 30" W. - 339.10'
 - 16 N. 86° 44' 30" W. - 365.09'
 - 17

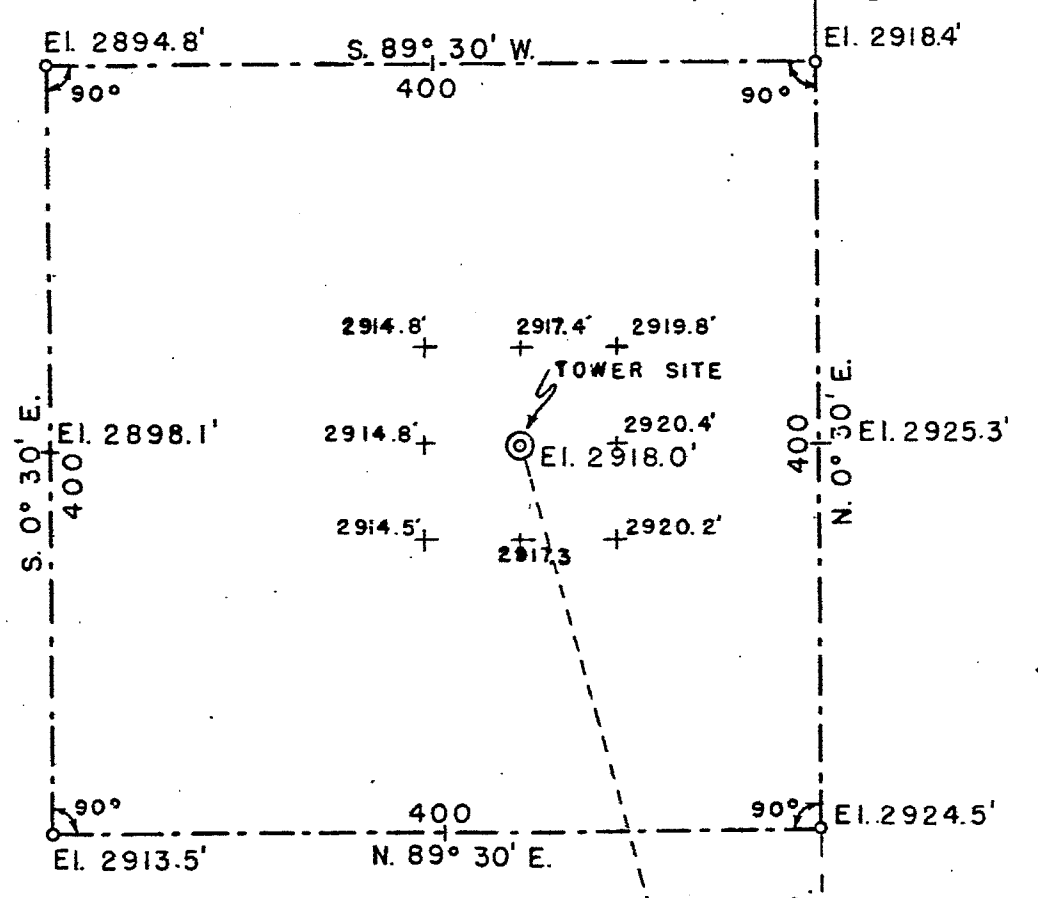


- 18 N. 64° 39' 30" W. - 135.52'
- 19 N. 46° 43' W. - 198.45'
- 20 N. 59° 03' W. - 857.80'
- 21 N. 52° 15' W. - 298.07'
- 22 N. 44° 18' W. - 392.83'
- 23 N. 48° 27' 30" W. - 634.45'
- 24



ACCESS ROAD
Scale: 1" = 400'

Note:
grid
Elevation interval is
50' around tower site



TOWER SITE
Scale: 1" = 100'

Rock Crib, S1/4 Cor.

RECEIVED BY
Morrow County Surveyor
Date: 11-21-2017
Rec'd By: S.K.H.
No.: 2017-1815D
Folder No.: 1815

HAYES AND HARRIS			
PACIFIC TEL. & TEL. CO.			
BLACKHORSE RADIO SITE			
SEC. 18 T. 2 S., R. 27 E., W. M.			
SCALE	DATE	DRN. BY	DRNG. NO.
AS SHOWN	7/19/57	W. Q. H.	14-C