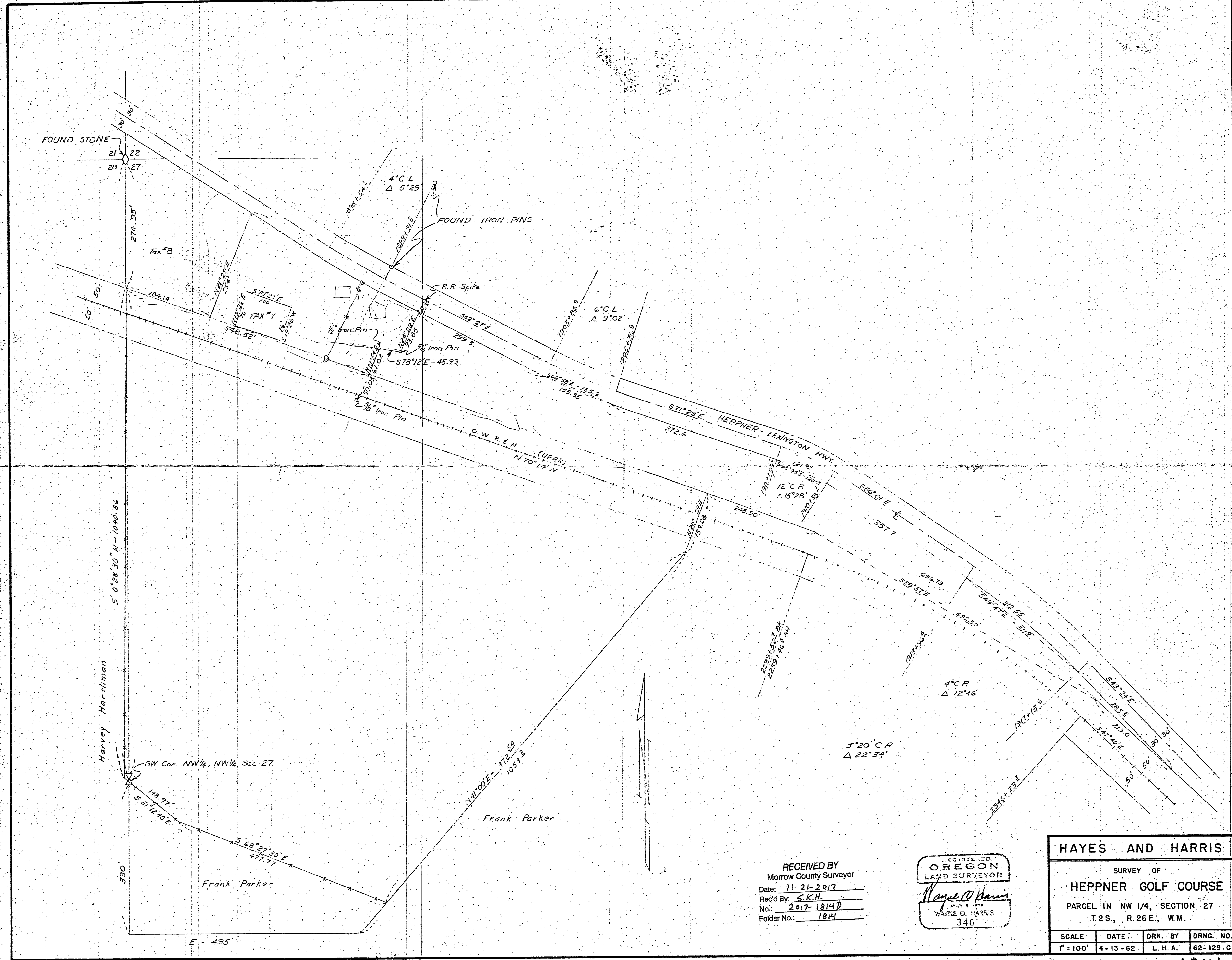
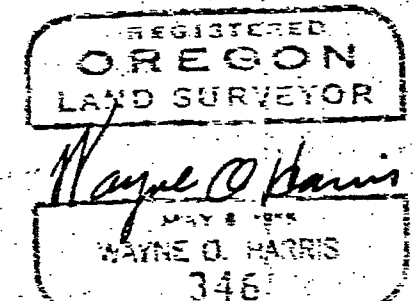


Bert Corbett

1814



RECEIVED BY
 Morrow County Surveyor
 Date: 11-21-2017
 Rec'd By: S.K.H.
 No.: 2017-1814D
 Folder No.: 1814



HAYES AND HARRIS			
SURVEY OF			
HEPPNER GOLF COURSE			
PARCEL IN NW 1/4, SECTION 27			
T.2S., R.26E., W.1M.			
SCALE	DATE	DRN. BY	DRNG. NO.
1" = 100'	4-13-62	L. H. A.	62-129 C

1814