

# RECORD SURVEY

LOCATED IN THE SOUTHEAST QUARTER OF SECTION 24, TOWNSHIP 5 NORTH, RANGE 26 EAST, W.M., CITY OF IRRIGON, MORROW COUNTY, OREGON

### SURVEYOR'S NARRATIVE

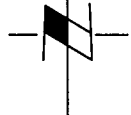
THE PURPOSE OF THIS SURVEY IS TO DOCUMENT THE ORIGIN AND LOCATION OF 3 MONUMENTS ESTABLISHED AS A PART OF A CONSTRUCTION PROJECT IN 2007. THESE MONUMENTS ARE LOCATED GENERALLY IN THE CENTERLINE OF MAIN AVENUE NEAR THE INTERSECTIONS OF 4TH STREET, 5TH STREET, AND DIVISION STREET.

THESE MONUMENTS WERE ESTABLISHED ON A CONSTRUCTION CENTERLINE, AS SHOWN ON CONSTRUCTION PLANS BY SCM CONSULTANTS INC, DATED AUGUST 2007. NO ATTEMPT WAS MADE TO DETERMINE THE RELATIONSHIP BETWEEN THE CONSTRUCTION CENTERLINE AND THE RIGHT OF WAY OF THE ROADS.

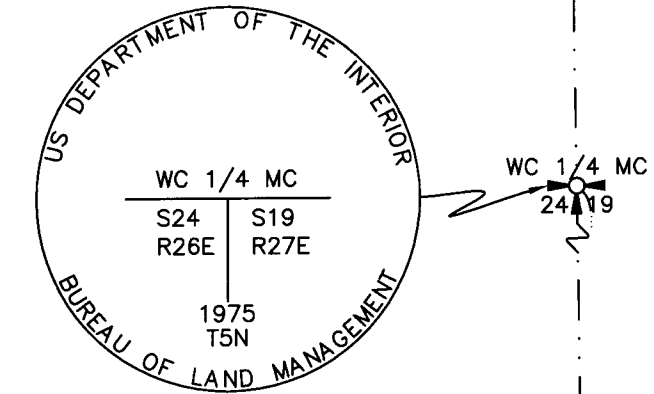
#### SURVEY REFERENCES:

- BLM PLAT & FIELD NOTES FOR DEPENDANT RESURVEY OF TOWNSHIP 5 NORTH, RANGE 27 EAST W.M. DATED 1977
- CORNER RESTORATION FORM FOR THE SOUTHEAST CORNER OF SECTION 24, TOWNSHIP 5 NORTH, RANGE 26 EAST BY G. DENNIS EDWARDS (LS 951) DATED MAY 2006

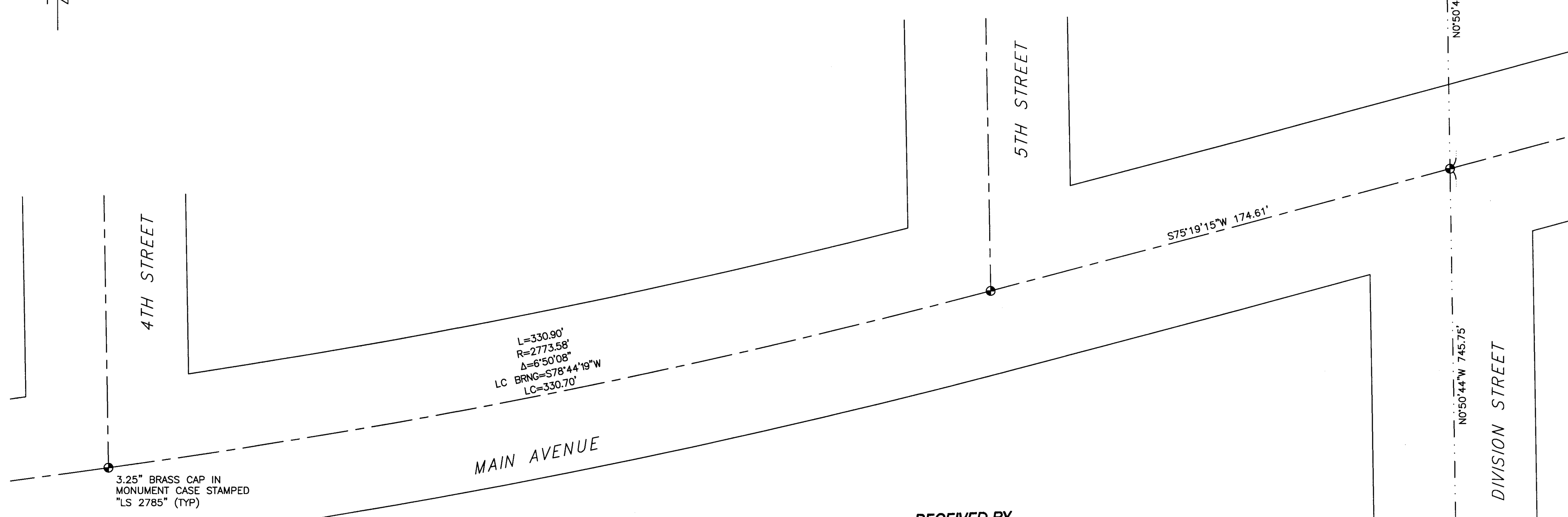
1"=30'



FOUND 3.25" BRASS CAP STAMPED:



AS DESCRIBED IN BLM FIELD NOTES FOR DEPENDANT RESURVEY OF T5N R27E

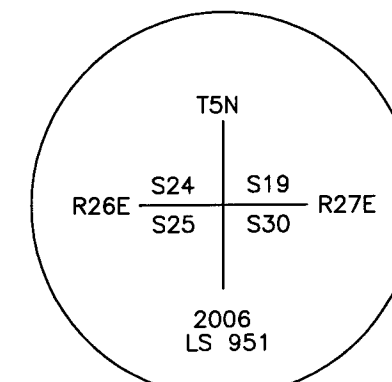


L=330.90'  
 R=2773.58'  
 Δ=6°50'08"  
 LC BRNG=S78°44'19"W  
 LC=330.70'

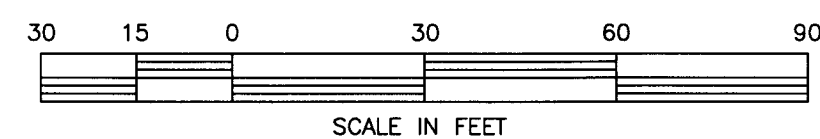
3.25" BRASS CAP IN MONUMENT CASE STAMPED "LS 2785" (TYP)

**RECEIVED BY**  
 Morrow County Surveyor  
 Date: 10-19-2017  
 Rec'd By: S.K.H.  
 No.: 2017-1809 C  
 Folder No.: 1809

FOUND 2.25" ALUMINUM CAP STAMPED:



AS DESCRIBED IN CORNER RESTORATION FORM BY G. DENNIS EDWARDS DATED 5/06



SCALE IN FEET

### SURVEYOR'S CERTIFICATION

I, JOHN A. BAALMAN, A PROFESSIONAL LAND SURVEYOR IN THE STATE OF OREGON HEREBY CERTIFY THAT THIS MAP CORRECTLY REPRESENTS A SURVEY CONDUCTED UNDER MY DIRECT SUPERVISION IN OCTOBER 2017, IN CONFORMANCE WITH THE REQUIREMENTS OF THE SURVEY RECORDING LAW, AS ESTABLISHED BY ORS CHAPTER 209

REGISTERED PROFESSIONAL LAND SURVEYOR

*John A. Baalman* 10/10/17

OREGON  
JANUARY 10, 1996  
JOHN A. BAALMAN  
02735LS

RENEWS 12/31/17

**RSI** ROGERS SURVEYING INC., P.S.  
 1455 COLUMBIA PARK TRAIL  
 RICHLAND, WA. 99352  
 PHONE (509) 783-4141  
 FAX: (509) 783-8994  
 www.rogerssurveying.com

### NOTES:

1. BASIS OF BEARINGS SHOWN HEREON ARE GRID, US STATE PLANE, NAD '83/2011, OREGON NORTH ZONE, BASED ON GPS OBSERVATIONS. UNIT OF MEASURE IS THE INTERNATIONAL SURVEY FOOT. DISTANCES SHOWN HEREON ARE GROUND.
2. THIS SURVEY DOES NOT PURPORT TO SHOW EASEMENTS IF ANY EXIST.
3. EQUIPMENT AND PROCEDURES USED: MULTI FREQUENCY GNSS RECEIVERS USING REAL TIME KINEMATIC METHODS.

CLIENT		CITY OF IRRIGON		JOB	15507
PROJECT		RECORD SURVEY			
		SE1/4 S24 T5N R26E			
DRN. BY	DPB	SCALE	1"=30'	F. B. NO.	RTK
APPROVED	JAB	DATE	10-5-17	ACAD VER	-2017
				FILE:	\17\15507.DWG
				SHEET	1
				OF	1

REV: 10-5-17 1809