

PUBLIC LAND CORNER REMONUMENTATION SURVEY
LOCATED IN TOWNSHIP 2 SOUTH, RANGE 26 EAST, W.M.
MORROW COUNTY, OREGON

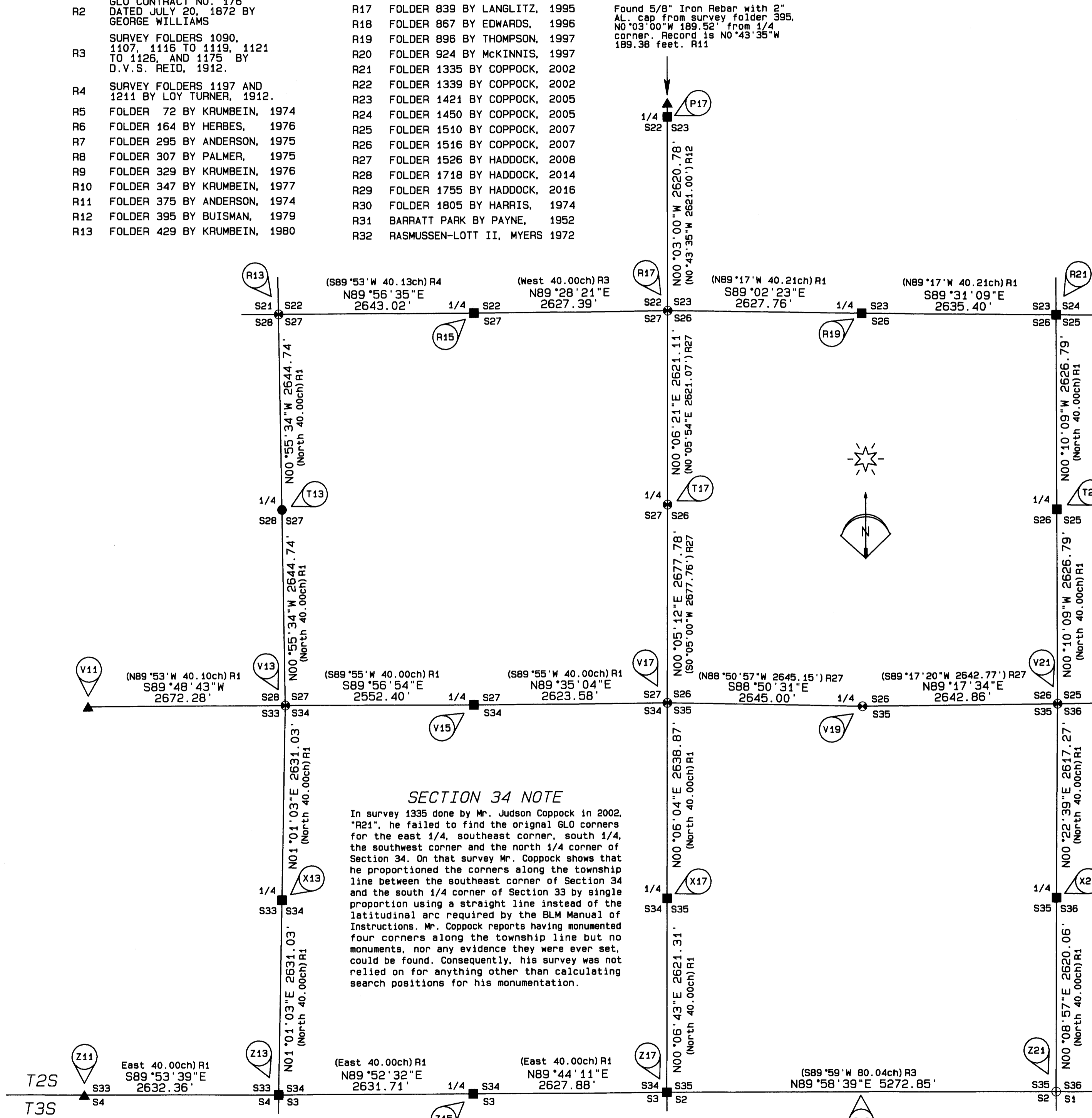
CORNER HISTORY

The "R#" following the corner notes refers to the record survey in the Reference Surveys list from which the note data was taken. Additional details concerning corner references and monumentation set or held can be found in the corner certificates filed with this survey. Unless otherwise noted below, the corners listed have only one record position.

REFERENCE SURVEYS

Table listing reference surveys R1 through R32, including details like 'GLO CONTRACT #119 DATED FEBRUARY 15, 1867 BY B.J. PENGRA' and 'FOLDER 581 BY KRUMBEIN, 1978'.

Found 5/8" Iron Rebar with 2" Al cap from survey folder 395. NO 03°00'W 189.52' from 1/4 corner. Record is NO 43°35'W 189.38 feet. R1



SECTION 34 NOTE

In survey 1335 done by Mr. Judson Coppock in 2002, "R21", he failed to find the original GLO corners for the east 1/4, southeast corner, south 1/4, the southwest corner and the north 1/4 corner of Section 34. On that survey Mr. Coppock shows that he proportioned the corners along the township line between the southeast corner of Section 34 and the south 1/4 corner of Section 33 by single proportion using a straight line instead of the latitudinal arc required by the BLM Manual of Instructions. Mr. Coppock reports having monumented four corners along the township line but no monuments, nor any evidence they were ever set, could be found. Consequently, his survey was not relied on for anything other than calculating search positions for his monumentation.

BASIS OF BEARINGS

Bearings are based on GPS observations rotated 0°40'14" clockwise to true bearings. Distances shown are true ground obtained by applying a combined scale factor of 0.999906375 to the NAD 83 grid distances.

REGISTERED PROFESSIONAL LAND SURVEYOR

Stephen K. Haddock
OREGON JULY 3, 2001 STEPHEN K. HADDOCK 56295LS
RENEWS 6-30-19

- FOUND RECORD MONUMENT FOR GLO CORNER POINT WITH ONLY ONE REPORTED POSITION.
SET BRASS CAP AT GLO CORNER POINT. ADDITIONAL POINTS HAVE BEEN ESTABLISHED BY OTHERS.
SET BRASS CAP AT GLO CORNER POINT WITH ONLY ONE RECORD POSITION.
POINT HELD AS EVIDENCE TO CONFIRM ADJACENT CORNERS
COMPUTED POINT

Note: Survey R16 by Langlitz reports that the corner coordinates were provided by the Corps of Engineers. The USACE corner work was apparently performed by Wayne Harris in 1974. The Harris project record can be found in the Umatilla County Surveyor's Office in the Wayne Harris files by Harris folder numbers 1249 and 1250. The corner search sheets from the Harris files are reported as survey R30 on this map.

Note: to match the USACE corner coordinates published on survey R16 to this project it was necessary to rotate the data from R16 by 0°40'07" and apply a scale factor of 1.00022450477. This information was obtained by survey ties between USACE monuments 108-3 and 115-A.

- CORNER No. NOTE:
P17 The original GLO corner was monumented with a stone 16x8x6 inches. "R1". In 1912 D.V.S. Reid found the stone loose on the ground and reset it in the original mound and added four references, "R3". In 1979 James Buisman held a point apparently determined by proportion. No monument is indicated in that survey, "R12". In 2005 Judson Coppock established a position for this corner by proportion. His monument is more than 65 feet away from his reported corner location, "R24". I have monumented the original GLO corner point determined by a small mound of stone and the 3/4" iron pipe reference set by Reid. This point agrees closely with the point by Buisman. There have been two positions held as this corner, the original GLO corner which I held for this survey and the point monumented by Coppock in error.
P13 The original GLO corner was monumented with a stone 20x12x10 inches. "R1". In 1914 Loy Turner set a stone 16x10x8 inches and dug pits, "R4". In 1974 Stephen Anderson found a marked stone and 1" iron pin, "R11". In 1977 Dave Krumbain found an iron pin, "R10". In 1980 Dave Krumbain set a brass cap, "R13". I found and held the record brass cap from R13.
P15 The original GLO corner was monumented with a charred stake and mound, "R1". In 1912 D.V.S. Reid set a rock 14x5x2 inches and made four references, "R3". In 1976 Dave Krumbain established a point for this corner by proportion but did not monument it, "R9". In 2008 I monumented the Krumbain corner point based on tie to his survey, "R27". In this survey I found two of Reid's references and they indicate that the position I monumented in 2008 is in fact the GLO corner point. I have therefore held that point as the true corner.
P17 The original GLO corner was monumented with a stone 14x12x6 inches, "R1". In 1912 D.V.S. Reid set a rock 13x7x5 inches and made four references, "R3". In 1976 Dave Krumbain proportioned a point for this corner but did not monument it, "R9". In 2008 I monumented the Krumbain corner point based on tie to his survey, "R27". In this survey I found two of Reid's references and they indicate that the position I monumented in 2008 is in fact the GLO corner point. I have therefore held that point as the true corner.
P19 The original GLO corner was monumented with a charred stake and mound, "R1". In 1912 D.V.S. Reid found the original mound and pits, set a wood post and made four references, "R3". In 2008 I set a brass cap by proportioning the latitude and holding the existing fence for departure, "R27". In this survey I found two of Reid's references and the rotted remains of his wooden corner post. I therefore held the GLO corner monumented by Reid and set a brass cap. I remarked my 2008 brass cap as a witness corner. There have been two record positions held as this corner, the original GLO corner held for this survey and the point I proportioned in 2008.
P21 The original GLO corner was monumented with a charred stake and mound, "R1". In 1912 D.V.S. Reid found the original mound and pits, set a fir post and made four references, "R3". In 2008 I set a brass cap by proportioning the latitude and holding the existing fence for departure, "R27". In this survey I found one of Reid's references and the rotted remains of the fir corner post. I therefore held the GLO corner monumented by Reid and set a brass cap. I remarked my 2008 brass cap as a witness corner. There have been two record positions held as this corner, the original GLO corner held for this survey and the point I proportioned in 2008.
P13 The original GLO corner was monumented with a stone 13x9x6 inches, "R1". In this survey I find no evidence of the corner and reestablish the position by single proportionate measure.
P17 The original GLO corner was monumented with a stone 24x10x8 inches, "R1". In 1974 Dave Krumbain found a 2" iron pipe, "R5". In 1980 Krumbain set a brass cap, "R13". In this survey I found and held the 1980 brass cap.
P21 The original GLO corner was monumented with a stone 14x10x8 inches, "R1". In 2008 I set a brass cap by single proportionate measure, "R27". Due to the discovery of the original GLO corner at the NE corner of Section 26 I saved the top off of my 2008 monument and set a new brass cap at the correctly proportioned point. There are two record positions for this corner. My point from 2008 and the one established by this survey.
P11 I tied a point at the intersection of the projected centerline of Stock Drive Road with an east-west fence as measurement evidence only. Nothing was found at this point.
P19 The original GLO corner was monumented with a charred stake in a mound, "R1". In 1974 Wayne Harris found a 5/8" iron pin stamped with the section numbers, "R30". In 1980 David Krumbain set a brass cap, "R13".
P21 The original GLO corner was monumented with a charred stake and mound, "R1". In 1912 D.V.S. Reid set a wood post, a bolster pin, and the stub of an axle and set four references, "R3". In 1972 Leland Myers held a position but does not identify the monument, "R32". In 1975 Stephen Anderson found a steel pin with a cap, "R7". In 1977 David Krumbain established a proportionate point but did not monument it, "R10". In 1980 David Krumbain set a brass cap in place of the steel pin from R7, "R13". I found and held the axle. The witness monuments from R13 are still in place except that the brass cap is missing from the northerly one.
P19 The original GLO corner was monumented with a charred stake and mound, "R1". In 1952 J.C. Payne found a 2" iron pipe, "R31". I found and held the 2" iron pipe held in all surveys since Barratt Park Addition.

- CORNER No. NOTE:
P21 The original GLO corner was monumented with a charred stake and mound, "R1". In 1974 Wayne Harris found a 2" iron pipe with a 5/8" iron pin inside, "R30". In 1980 Dave Krumbain set a brass cap in place of the 2" pipe, "R13". I found and held the brass cap from R13.
P13 The original GLO corner was monumented with a stone 12x10x9 inches, "R1". In 2002 Judson Coppock computed a point for this corner by single proportion but did not monument the point, "R21". In this survey I have monumented the corner point calculated by single proportionate measure using the found corner positions at the southwest and northwest corners of Section 34 as shown hereon. See the Section 34 note for additional information on record survey R21. There have been two positions held for this corner, one established by this survey and the unmonumented one calculated by record survey R21.
P17 The original GLO corner was monumented with a stone 20x14x8 inches, "R1". In 1912 D.V.S. Reid reestablished this corner by proportion and set a rock marked "R3". In 2002 Jud Coppock established a point for this corner by single proportion but did not monument it, "R21". In 2002 Judson Coppock claimed to set a brass cap by Reid and a stone marked 1/0 on the edge of a stone mound. In this survey I set a brass cap at the position established from Reid's references. There have been two positions held for this corner, the one established by Reid and the unmonumented point by survey R21. See the section 34 note.
P21 The original GLO corner was monumented with a stone 18x10x6 inches, "R1". In 1982 Gary Langlitz reported coordinates provided by the USACE but gave no indication of a monument at that point, "R16". In this survey I found the original GLO stone and remonumented it with a brass cap. There have been two positions reported for this corner, one by this survey and the other from record survey R16.
P11 I tied the intersection of an east-west fence with the centerline of Stock Drive Road (which according to the road notes runs along the north-south centerline of Section 4) as a measurement check to the southwest corner of section 34. No monument by Coppock was found.
P21 The original GLO corner was monumented with a charred stake and mound, "R1". In 1872 U.S. Deputy Surveyor George Williams called for a stone corner, "R2". In 2002 Judson Coppock monumented a proportioned point, "R21". In this survey I found and held a distinct mound of stone in an east-west fence. The mound is nearly equidistant from record evidence to the east and west. There have been two positions held for this corner, one from this survey and the unmonumented point from R21. See the section 34 note on this map.
P15 The original GLO corner was monumented with a charred stake and mound, "R1". In about 1907 D.V.S. Reid found the original corner and drove a 3/8" iron rod in the decayed post and mound. Then, in 1912 Mr. Reid added a stone along side the iron rod and set four references, "R3". In 1974 Wayne Harris claimed to set a brass cap by single proportion, "R21". I found the iron rod, stone and one reference by Reid and remonumented the original corner point. There have been two record positions reported for this corner, the original corner point identified by Reid and the unmonumented point from R21. See the section 34 note on this map.
P21 The original GLO corner was monumented with a charred stake and mound, "R1". In 1912 D.V.S. Reid found the original corner and drove a 5/16" iron rod in it, set a stone along side and made four references, "R3". In 1974 Wayne Harris called for a point 3 feet east of a rock jack but set no monument, "R30". In 1982 Gary Langlitz reported coordinates received from the US Army Corps of Engineers but did not report a monument, "R16". In 1984 Denny Edwards set a nail at a fence corner, "R15". In 1987 Ron McKinnis reported a position he computed from the 1982 USACE coordinates by Langlitz, "R20". In 2002 and 2007 Judson Coppock reported setting a brass cap at the coordinates received from USACE in the Langlitz survey, "R21". I found a nail, not a brass cap, at the corner held by Coppock in his survey R25. I found the nail set by Denny Edwards. I found and held the 5/16th inch iron rod set by Reid in the original post. There have been five positions held for this corner, the original as monumented by Reid and now by this survey, the nail set by Edwards, the nail set by Coppock, the unmonumented USACE position which is presumed to be the same position used by Wayne Harris, and the unmonumented position by McKinnis. See the section 34 note on this map.
P19 This corner point now falls in the USACE Willow Creek Lake. The position was reestablished by Reid in 1912 who, because the point fell in an alfalfa field, set his monument and references well below the surface of the field. It is probable that, should the reservoir be lowered enough to make a search, that this corner would be found to be still existent.
P21 The original GLO corner was monumented with a stone 16x10x8 inches, "R1". In 1912 D.V.S. Reid found the stone in the county road and set a 1 1/2"x30" iron pipe beside the stone and made four references, "R3". In 1982 Gary Langlitz reported coordinates for this corner but made no mention of any monument, "R16". This point now falls in the USACE Willow Creek Lake, and the county road had been destroyed by water action. There is a buried pipeline approximately 24" below the surface at the position of the USACE coordinates and the pipe by Reid is lying in the mud approximately 25 feet south of the USACE coordinates. The corner held on this map is the USACE position, any evidence of another location having been destroyed.
P21 The original GLO corner was monumented with a stone with six notches on each of 4 sides, "R1". In 1974 Wayne Harris found a stone marked "R3". In 1982 Gary Langlitz reported coordinates for this corner but provided no information concerning the monument, "R16". I found the stone marked "R3" in a small mound of stones set over the top of a bottle shaped stone 16x6x6 inches set vertically in the ground and surrounded with an assortment of nails and screws. I set a brass cap at the position of the found stone.

NARRATIVE OF SURVEY

This survey was performed at the direction of the Morrow County Surveyor. The purpose of the survey was to provide more permanent monumentation of the original section corners in the Heppner area and to provide for the stability of the section lines as shown. The original government survey in this township was completed in 1867. In August of 1912, then county surveyor D.V.S. Reid, after having surveyed in the area for many years and having personal knowledge of the location of many of the section corners, noted that there was significant decay of the monuments at these corners. This situation prompted him to remonument those corners that were about to be lost. The remonumentation notes prepared by Mr. Reid were recorded in two books kept in the county surveyor's office for that purpose. However, no county surveyor prior to myself made an effort to read and index those books. Consequently, beginning in the late 1960's, various area surveyors began to establish new corner positions being unaware of Reid's work or that many of the original GLO corners were well referenced and still in existence. As can be seen on this map, slightly more than half of the corners in the Heppner area have multiple positions that were held to be the same corner point. Some of these points have been monumented and some were calculated but never monumented. While I have shown those surveys where additional section corner points were established, I have not shown all of the surveys that are based on the extraneous corner positions. Care should be taken to determine what influence, if any, these extraneous positions should bear on future surveys done in the area. Additional information concerning each of the corner positions is given in the corner notes above and in the corner certificates filed herewith. The position of the additional corner points in the corner certificates was developed by survey ties to monuments from the record survey where the additional point originated. This survey was performed using a Trimble R7/RB RTK GPS System.

RECEIVED BY Morrow County Surveyor Date: 9-21-2017 Rec'd By: S.K.H. No.: 2017-1826D Folder No.: 1806

Table with survey details: SURVEY FOR MORROW COUNTY P.O. BOX 788 HEPPNER, OR 97836. PROJECT DATE: AUGUST - SEPTEMBER 2017. SCALE: 1" = 1000'. WITNESS TREE SURVEYING Stephen K. Haddock, PLS, CFedS P.O. Box G Pilot Rock, Oregon 97868 (541) 443-2922