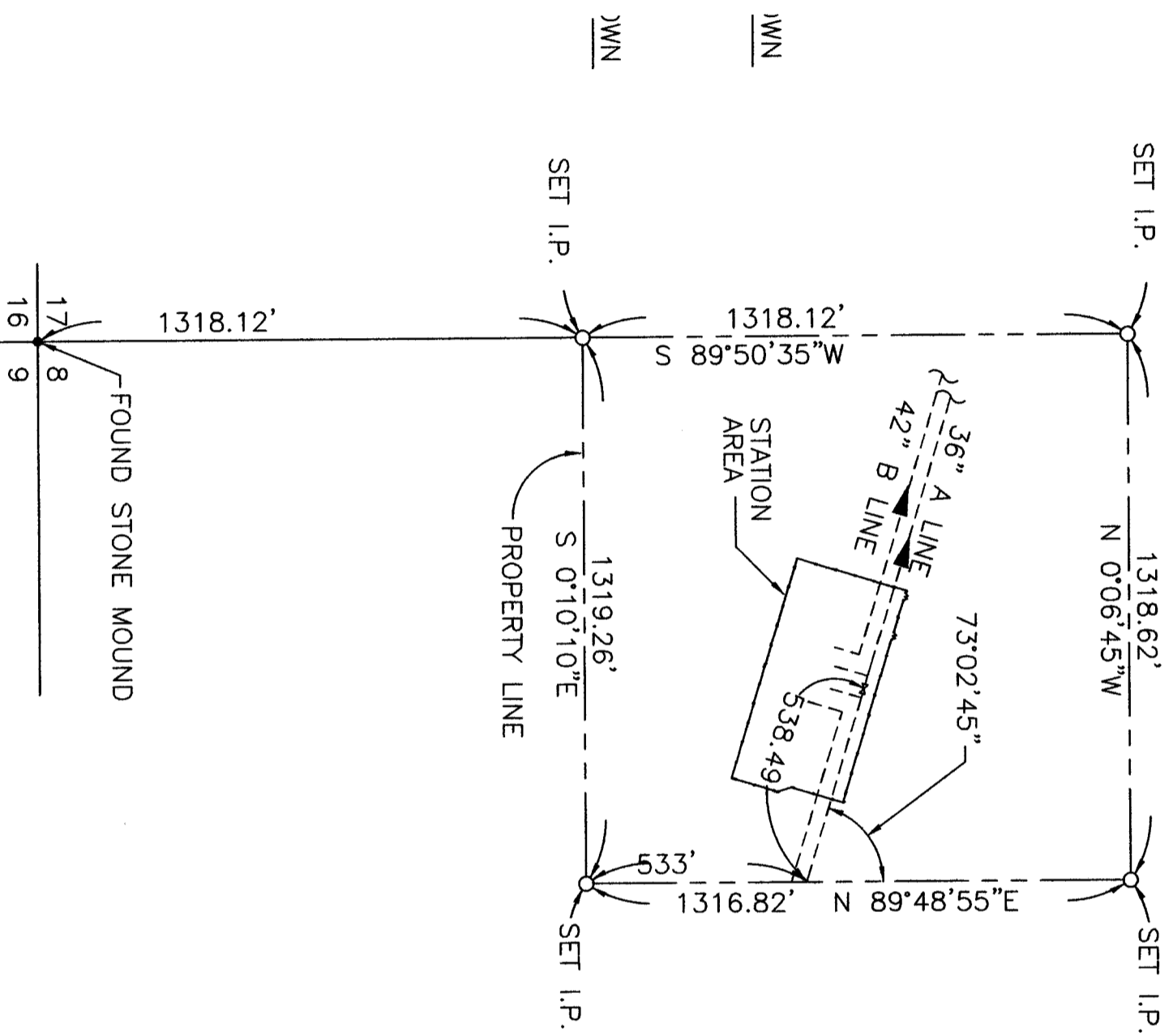
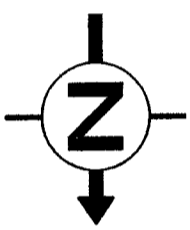


3

2

1

STATION NORTH



MORROW COUNTY, OREGON  
SECTION 8, T1S, R24E, WM

6.63'  
3.54'

LEGEND



LIGHT POLE

RECEIVED BY  
Morrow County Surveyor  
Date: 6-27-2017  
Rec'd By: S.K.H.  
No.: 2017-1802 C  
Folder No.: 1802

ENG. APPROVAL
DATE



IONE COMPRESSOR STATION

FIA #	CHANGE#	DISCIPLINE #
1230		02

GENERAL PLOT PLAN (checked out by others)

ER:
-----

SCALE	DRAWING No	REV
1"=40'-0"	509-A-A-4	29

VIUAL REVISIONS

PLOTTED SIZE: ARCH D (24x36)

-----TIME-----  
-----DESIGNFILE-----