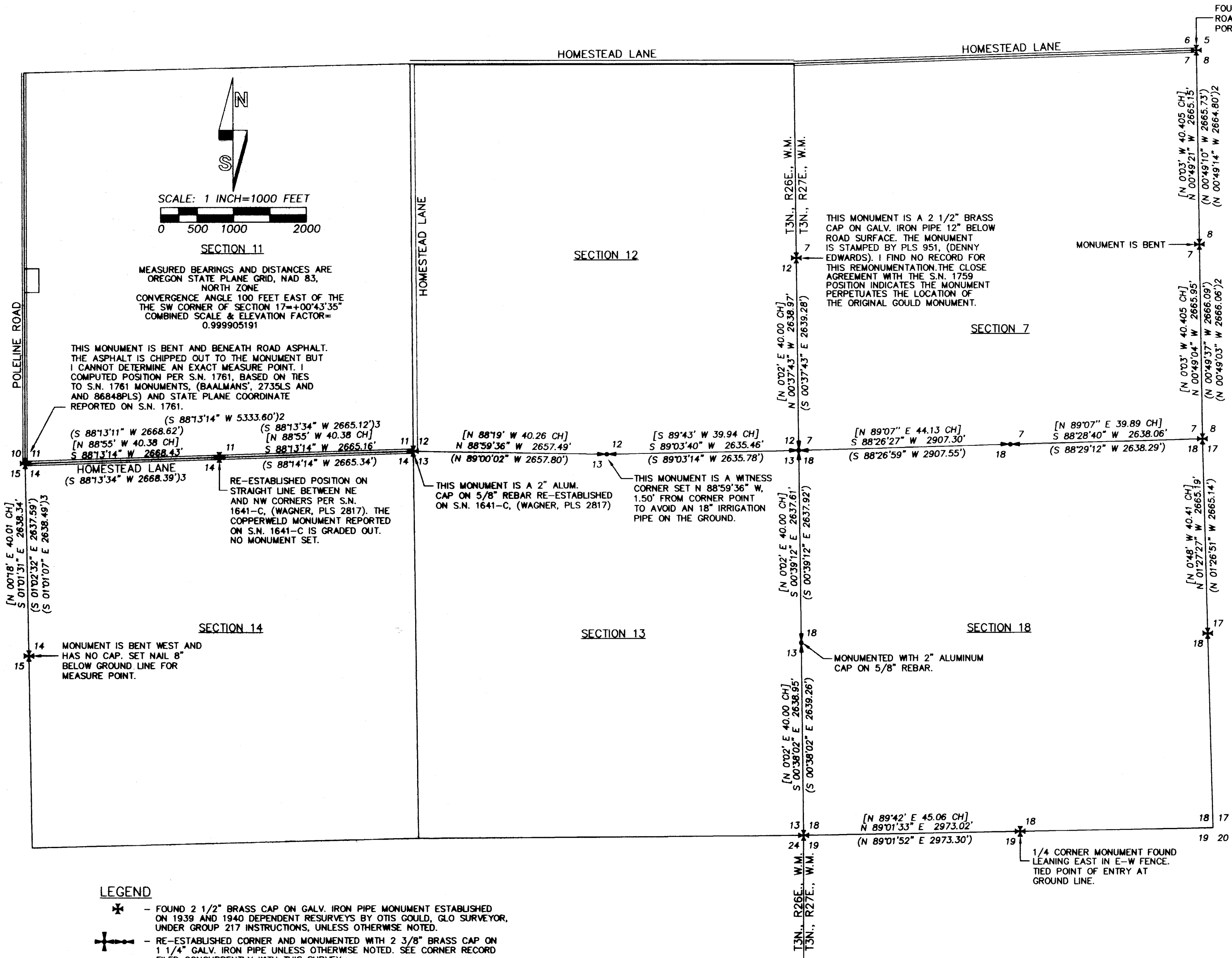
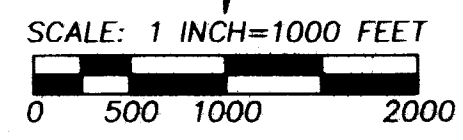


# RECORD OF SURVEY

1798



FOUND BENT 1/2" REBAR 8" BELOW ROAD SURFACE. TIED STRAIGHT PORTION OF REBAR.



**SECTION 11**  
MEASURED BEARINGS AND DISTANCES ARE OREGON STATE PLANE GRID, NAD 83, NORTH ZONE  
CONVERGENCE ANGLE 100 FEET EAST OF THE THE SW CORNER OF SECTION 17=+00'43'35"  
COMBINED SCALE & ELEVATION FACTOR= 0.999905191

THIS MONUMENT IS BENT AND BENEATH ROAD ASPHALT. THE ASPHALT IS CHIPPED OUT TO THE MONUMENT BUT I CANNOT DETERMINE AN EXACT MEASURE POINT. I COMPUTED POSITION PER S.N. 1761, BASED ON TIES TO S.N. 1761 MONUMENTS, (BAALMANS', 2735LS AND AND 8684BPLS) AND STATE PLANE COORDINATE REPORTED ON S.N. 1761.

RE-ESTABLISHED POSITION ON STRAIGHT LINE BETWEEN NE AND NW CORNERS PER S.N. 1641-C, (WAGNER, PLS 2817). THE COPPERWELD MONUMENT REPORTED ON S.N. 1641-C IS GRADED OUT. NO MONUMENT SET.

THIS MONUMENT IS A 2" ALUM. CAP ON 5/8" REBAR RE-ESTABLISHED ON S.N. 1641-C, (WAGNER, PLS 2817)

THIS MONUMENT IS A WITNESS CORNER SET N 88°59'36" W, 1.50' FROM CORNER POINT TO AVOID AN 18" IRRIGATION PIPE ON THE GROUND.

THIS MONUMENT IS A 2 1/2" BRASS CAP ON GALV. IRON PIPE 12" BELOW ROAD SURFACE. THE MONUMENT IS STAMPED BY PLS 951, (DENNY EDWARDS). I FIND NO RECORD FOR THIS REMONUMENTATION. THE CLOSE AGREEMENT WITH THE S.N. 1759 POSITION INDICATES THE MONUMENT PERPETUATES THE LOCATION OF THE ORIGINAL GOULD MONUMENT.

MONUMENT IS BENT

**NARRATIVE:**

THIS SURVEY WAS MADE AT THE REQUEST OF UMATILLA ELECTRIC COOPERATIVE ASSOCIATION. THE PURPOSE OF THE SURVEY WAS TO RECOVER OR RE-ESTABLISH CERTAIN SECTION AND ONE-QUARTER SECTION CORNERS NEAR THE GENERAL ROUTE OF A POWER TRANSMISSION LINE THAT IS TO BE UPGRADED. THE CORNERS AND LINES BETWEEN THEM WILL BE USED TO PREPARE EASEMENT DESCRIPTIONS IN THE FUTURE.

AN IRRIGATION CANAL HAS BEEN CONSTRUCTED NEAR THE NORTH LINE OF SECTION 13, T3N., R26E., W.M. AND THE NORTH ONE-QUARTER CORNER OF SECTION 18, T3N., R27E., W.M. IS FARMED OUT. IN 1973, ROGERS SURVEYING MADE AN EXTENSIVE SURVEY IN THE AREA AND RECOVERED AND TIED MOST OF THE NOW OBLITERATED CORNERS. THE ROGERS SURVEY WAS RECORDED IN 2016 AS SURVEY NO. 1759. OUR MEASUREMENTS FIT THOSE OF ROGERS SURVEYING WELL. I USED THE COMPASS RULE METHOD TO RE-ESTABLISH OBLITERATED CORNERS USING THE ROGERS SURVEYING RECORD, AS FOLLOWS:

I RE-ESTABLISHED THE WEST ONE-QUARTER CORNER AND NORTHWEST CORNER OF SECTION 18, T3N., R27E., W.M. BY THE COMPASS RULE METHOD BETWEEN THE RECOVERED SOUTHWEST CORNER OF SECTION 18 AND THE RECOVERED WEST ONE-QUARTER CORNER OF SECTION 7.

I RE-ESTABLISHED THE NORTH ONE-QUARTER CORNER OF SECTION 13, T3N., R26E., W.M. BETWEEN THE RECOVERED NORTHWEST AND RE-ESTABLISHED NORTHEAST CORNER OF SECTION 13.

I RE-ESTABLISHED THE NORTH ONE-QUARTER CORNER OF SECTION 18, T3N., R27E., W.M. BETWEEN THE RECOVERED NORTHEAST CORNER AND RE-ESTABLISHED NORTHWEST CORNER OF SECTION 18.

THE CONTROL SURVEY AND CORNER SETS WERE MADE WITH TRIMBLE GEODETIC GPS RECEIVERS OPERATED IN REAL TIME KINEMATIC MODE. CONTROLLING CORNERS AND NEW MONUMENT ESTABLISHED WERE VERIFIED BY REDUNDANT OBSERVATIONS.

**LEGEND**

- \* - FOUND 2 1/2" BRASS CAP ON GALV. IRON PIPE MONUMENT ESTABLISHED ON 1939 AND 1940 DEPENDENT RESURVEYS BY OTIS GOULD, GLO SURVEYOR, UNDER GROUP 217 INSTRUCTIONS, UNLESS OTHERWISE NOTED.
- + - RE-ESTABLISHED CORNER AND MONUMENTED WITH 2 3/8" BRASS CAP ON 1 1/4" GALV. IRON PIPE UNLESS OTHERWISE NOTED. SEE CORNER RECORD FILED CONCURRENTLY WITH THIS SURVEY.
- [XOX] - DIMENSION FROM RECORD SURVEY BY OTIS GOULD UNDER GLO DEPENDENT SURVEYS IN 1939 AND 1940.
- (XOX) - RECORD DIMENSION FROM S.N. 1759, 1973, ROGERS SURVEYING. THIS SURVEY WAS RECORDED IN 2016.
- (XOX)2 - RECORD DIMENSION FROM S.N. 1761, 2016, ROGERS SURVEYING, INC.
- (XOX)3 - RECORD DIMENSION FROM S.N. 1641-C, 2012, ROGERS SURVEYING, INC.
- CH - INDICATES CHAIN UNIT OF MEASURE. 1 CHAIN = 66 FEET.
- S.N. - INDICATES SURVEY NUMBER, MORROW COUNTY SURVEY RECORDS.

**RECEIVED BY**  
Morrow County Surveyor  
Date: 4-11-2017  
Rec'd By: S.K.H.  
No.: 2017-1798C  
Folder No.: 1798

REGISTERED PROFESSIONAL LAND SURVEYOR  
*William R. Wells*  
OREGON  
JULY 22, 1977  
WILLIAM R. WELLS  
1106  
RENEWS 6/30/18

WELLS SURVEYING  
200 SE HAILEY SUITE 108  
P.O. BOX 1696  
PENDLETON, OR 97801  
PHONE: (541) 276-6362  
DATE: 03/17 DR. BY: WRW  
CK. BY: WRW NO: 17-1638

PROJECT: \OT TAP ROS  
RECORD OF SURVEY FOR:  
UMATILLA ELECTRIC COOPERATIVE ASSOCIATION  
SITUATED IN SECTIONS 12, 13 & 14, T3N., R26E., W.M. & SECTIONS 7 & 18, T3N., R27E., W.M. MORROW COUNTY, OREGON

1798