

SEE 1977 EDWARDS SURVEY FOR TWEED

5 NORTH

1/4

620'

23

24

25

26

2642 ±

50° 20' 41" E

26

W 1/4 Cor. Sec. 25

25

26

26

26

26

26

26

26

26

26

26

26

26

26

26

26

26

26

26

26

26

26

26

26

26

26

26

26

26

26

26

26

26

26

26

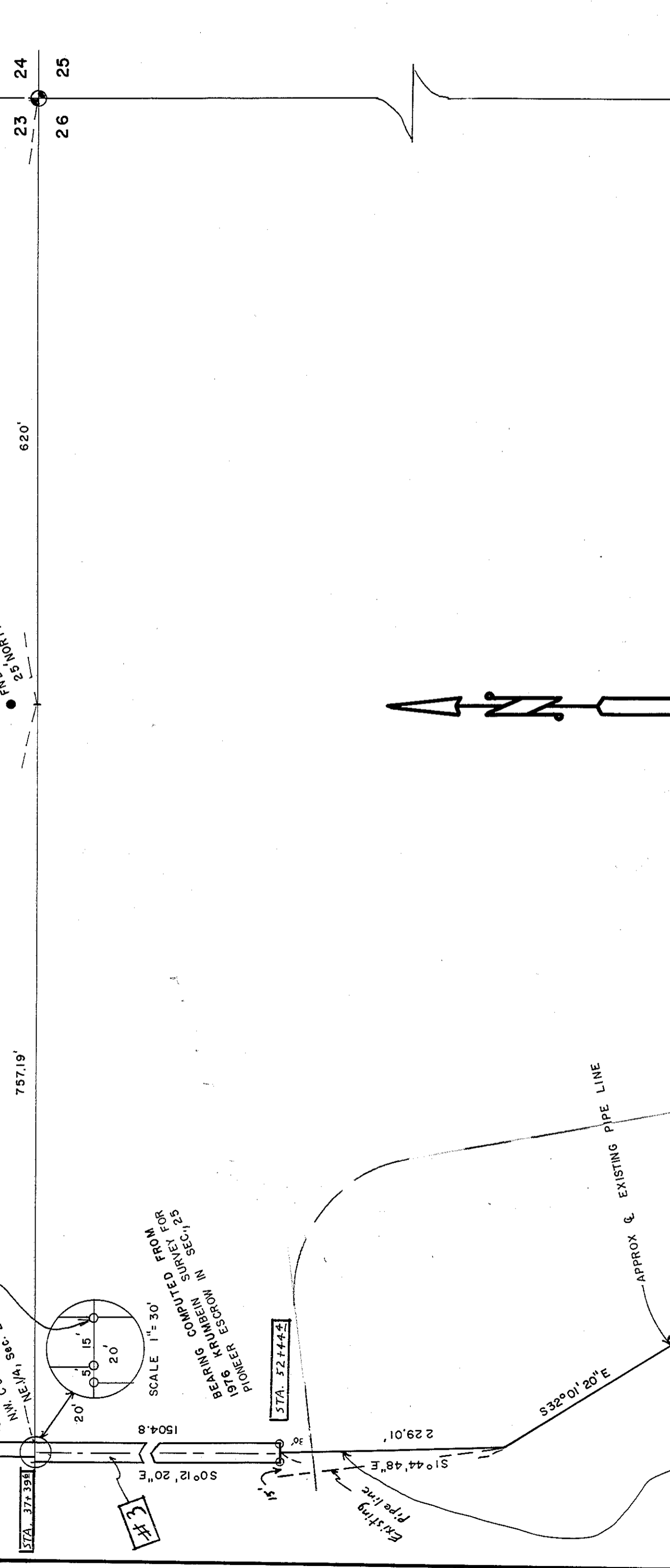
26

26

26

26

26



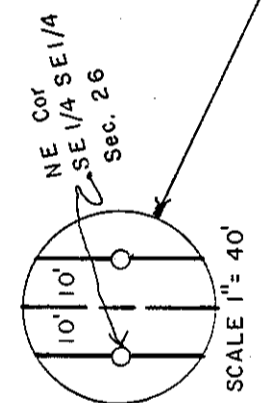
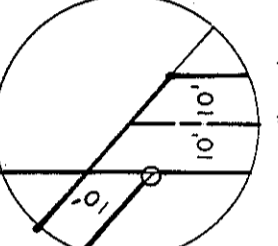
REGISTERED
PROFESSIONAL
LAND SURVEYOR

OREGON
JULY 16, 1971
G. DENNIS EDWARDS
99J

RECEIVED BY
Morrow County Surveyor
Date: 7-20-2017
Rec'd By: S.K.H.
No.: 2017-1791C
Folder No.: 1791

SURVEY FOR: WESTERN EMPIRE
LOCATION SEC. 25 &
SEC. 26, T5 N, R 26 E, WM., MORROW COUNTY ORE,
DATE 7-19-79 SCALE 1"=100'
MONUMENTS FOUND (000) OF RECORD
O/2" IRON RODS SET JOB NO S 794103-A

EDWARDS SURVEYING
P. O. Box 763
Hermiston, Oregon
Ph, 567-3336



9794103A