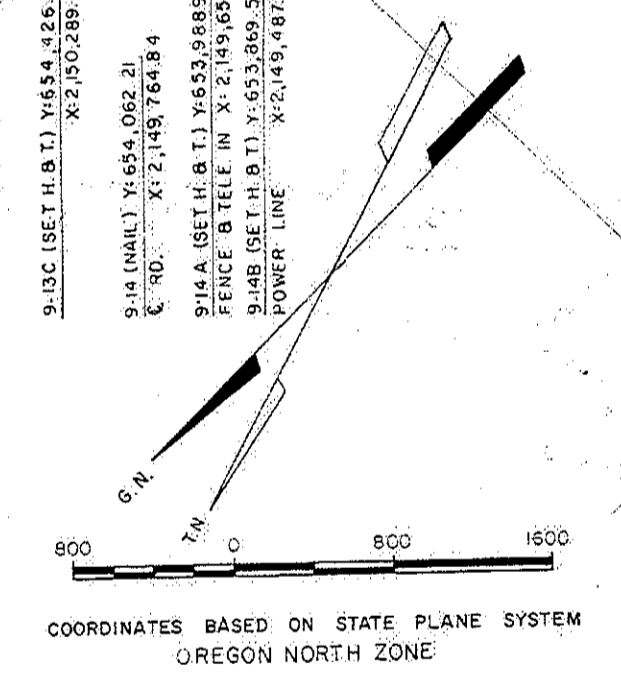


MORROW COUNTY, OREGON - T 1 S, R 23 & 24 E W 4 M

RECEIVED BY
Morrow County Surveyor
Date: 5-19-2016
Rec'd By: S.K.H.
No.: 2016-1763 D
Folder No.: 1763



GENERAL NOTES

- STATIONS AND DISTANCES SHOWN ARE GROUND UNLESS OTHERWISE NOTED.
- BEARINGS SHOWN ARE GEODETIC UNLESS OTHERWISE NOTED.
- REFER TO PGT AS-BUILT SHEETS # B-AL-158 & 157.
- REFER TO COMPUTATIONS BOOK # 5 PAGES # 24-30.
- REFER TO SURVEY BOOK # 807 PAGES # 2-10.
- OWNERSHIP SHOWN AS PER 1974 TITLE SEARCH.

LOCATION	CORR. FACTOR	AZ. CORR.
8-196 TO 8-198	0.999869	+0° 28' 27"
8-205 TO 9-3	0.999863	+0° 27' 50"
9-5 TO 9-10	0.999806	+0° 27' 19"
9-10 TO 9-29	0.999806	+0° 24' 14"

GRID DISTANCE = GEODETIC DISTANCE X CORR. FACTOR

LEGEND

	RECOVERED SECTION CORNER		PIPELINE P.O.T.
	COMPUTED SECTION CORNER		RECOVERED PROPERTY CORNER
	RECOVERED/COMPUTED 1/4 COR.		COMPUTED PROPERTY CORNER
			CONTROL TRAVERSE ANGLE POINT
			CONTROL TRAVERSE P.O.T.
			PIPELINE VALVE

SURVEY & MAPS
BY
E.H. SCHMIDT CORPORATION
CIVIL ENGINEERS
TULSA, OKLAHOMA

NO.	DATE	DESCRIPTION	W.D.	DR.	CK.	APPROVALS
2	DEC 77	FINAL SURVEY ISSUE	2888	HO		
1	MAY 77	GENERAL REVISION	2888	KW		
0	AUG 76	SURVEY RECORD ISSUE	7379	EHS		

RECORD OF APPROVALS AND CHANGES

36" PIPELINE R.O.W. & LAND SURVEY
MP 317.5 TO MP 323.5
TWS 1S RANGE 23 & 24 E W 4 M
MORROW COUNTY, OREGON
PACIFIC GAS TRANSMISSION COMPANY
SAN FRANCISCO, CALIFORNIA

SCALE: AS SHOWN
BILL OF MATERIAL CHANGE
SUPERSEDES SHEET 7-C OF 123 SHEETS
DRAWING NUMBER 500-A-RW-746 CHANGE 2

1763