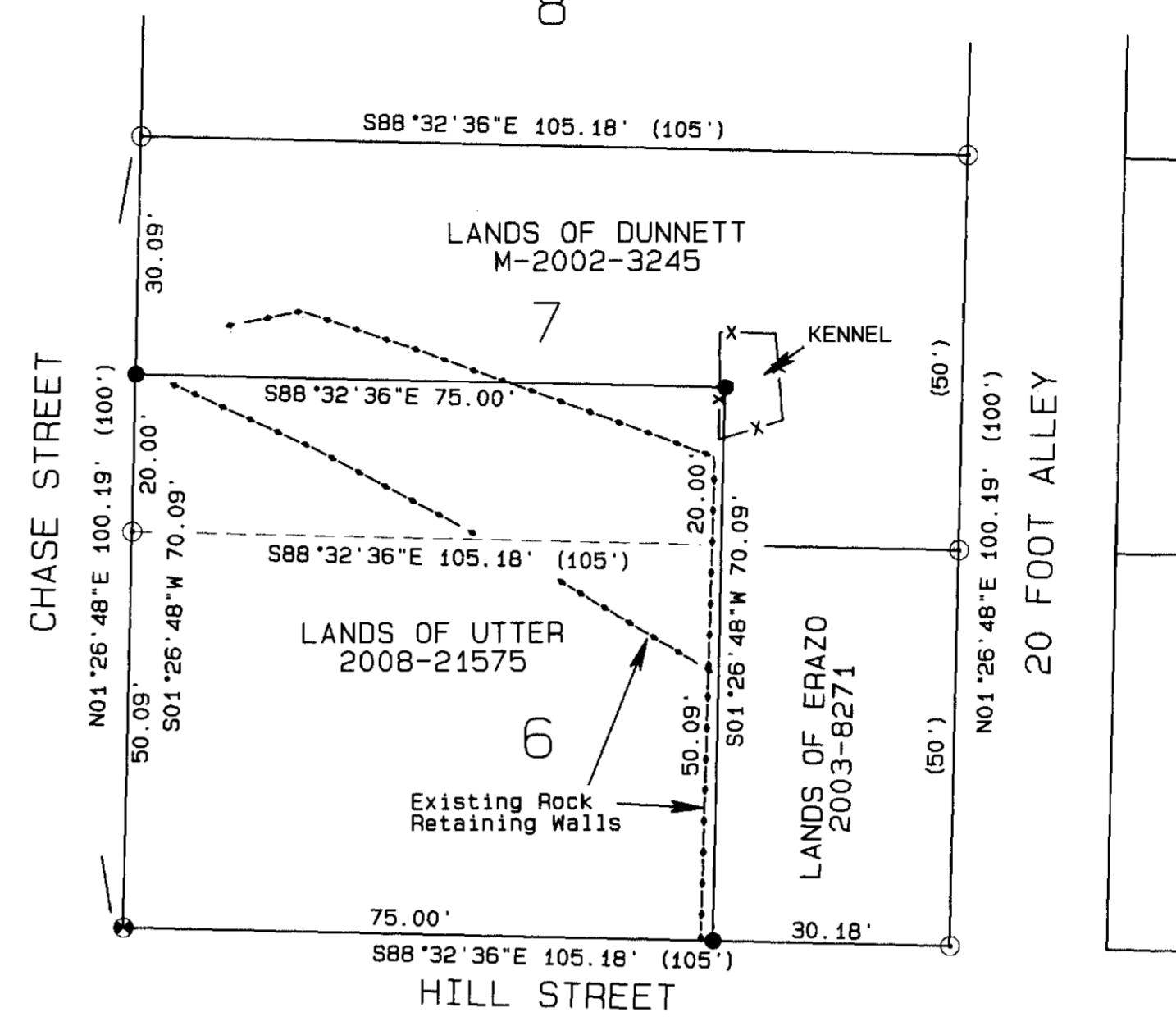


POSSESSORY NOTES

The data given in the list below are of measurements made to possessory items in the process of confirming the location of lines calculated by the method described in the narrative. The measurements shown below what was measured and the items relation to the nearest property line. Measurements were made with an RTK GPS and do not include items under tree canopy.

- (A) BACK OF SIDEWALK 0.2' NORTH OF LINE
- (B) BACK OF SIDEWALK 0.2' NORTH OF LINE
- (C) BACK OF SIDEWALK 0.4' SOUTH OF LINE
- (D) BACK OF SIDEWALK 0.05' SOUTH OF LINE
- (E) FENCE CORNER 1.0' SOUTH OF LINE
- (F) FENCE CORNER 0.4' SOUTH OF LINE
- (G) FENCE CORNER 1.0' NORTH OF LINE
- (H) FENCE CORNER 0.9' SOUTH OF LINE
- (I) FENCE CORNER 0.3' SOUTH OF LINE
- (J) FENCE CORNER 0.1' NORTH OF LINE
- (K) BACK OF SIDEWALK 0.5' NORTH OF LINE
- (L) BACK OF SIDEWALK 0.4' NORTH OF LINE

DETAIL OF LOTS 6 AND 7 OF BLOCK 6
DETAIL SCALE 1" = 20'



- LEGEND**
- SET A 5/8" x 24" IRON REBAR W/ A 1/8" ORANGE PLASTIC CAP STAMPED WTS AND 56295LS
 - ⊙ FOUND PLAT MONUMENT AS NOTED.
 - FOUND 1/2" IRON PIPE ASSUMED TO BE BY TURNER
 - COMPUTED POINT
 - ① SEE ITEM LISTED UNDER POSSESSORY NOTES
 - (XX.XX) RECORD PLAT DIMENSION EXCEPT WHERE OTHERWISE NOTED.
 - R1 AYER'S 4TH ADDITION PLAT BOOK 1 PAGE 15
 - R2 AYER'S 5TH ADDITION BOOK 1, PAGE 49
 - R3 COUNTY SURVEY C-983-E TURNER, 1917
 - R4 COUNTY SURVEY C-984-E EDWARDS FOR FARLEY
 - R5 COUNTY SURVEY B-1281-E EDWARDS FOR PAINTER
 - R6 COUNTY SURVEY 1521-C COPPOCK FOR CATES
 - R7 COUNTY SURVEY 1569-C COPPOCK FOR HAUGSVAR
 - R8 COUNTY SURVEY 1613-C COPPOCK FOR CITY OF HEPPNER

NARRATIVE OF SURVEY

This survey was performed at the request of Mrs. Dana Utter. The purpose of the survey was to locate and monument the corners of the property described in Morrow County deed 2008-21575 as a portion of lots six and seven of Block 6 of T.W. Ayer's 4th Addition to the City of Heppner.

To locate the boundaries of this property it was first necessary to resolve an error in the original plat. The written legal description of T.W. Ayer's 4th Addition calls for the distance between the initial point at the NW corner of Block 1 and the SW corner of Block 6 to be "1313.5 feet". The dimensions shown along that same line on the plat add up to 1331.5 feet for a difference of 18 feet. This same error can be seen on the plat by comparing the distances between the NW corner of Lot 4, Block 1 and the SW corner of Block 6 with the distances between the SE corner of Lot 3, Block 1 and the SE corner of Block 7. These distances add up to 997.5 feet and 980 feet respectively for a difference of 17.5 feet. An on the ground comparison of measurements between found monuments and the location of existing possessory lines shows that the error lies in lots 7 and 8 of Block 1 where Shobe Creek runs along the north side of Canon Street. Given that the distance of 1313.5' from the written description of the addition most closely matches the distance between found monuments, I have held that as being the correct value and proceeded to calculate the block lines for comparison with the possessory lines as follows:

I first proportioned the west end of Canon Street and then laid out this street parallel with the south line of the addition using the same length as the distance between the monuments on the south line of the addition. I then held the east line of Block 1 to be controlled by the two found iron pipes from the 1917 Turner survey. I then computed the SW corner of Lot 1, Block 1 at record distance south of the Initial point. I then computed the south line of Lot 1, Block 1 and the north line of August Street by projecting a line from the SW corner of Lot 1, Block 1 through a point 66 feet south of the pipe at the NE corner of Lot 3, Block 1 to an intersect with the east line of Block 1. I then proceeded to proportion the streets and alleys in Blocks 3, 4, 6, and 7. Next, I proportioned the location of Kirk Street and calculated the south lines of Lots 4, 5, 6, and 7 of Block 1 at record plat distance south of the initial point. The dimensional data on the plat indicate that there is an angle break in the west line of Court Street where it intersects the south line of Canon Street. This angle results from the fact that the south line of Canon Street on the plat is 518 feet long while the south line of Lot 4, Block 1 added to the south line of August Street is 501.5 feet. I calculated the location of Block 2 by locating the lines of August, Canon Court and Kirk Streets.

The calculated lot and block lines were then compared to existing possessory lines with the results shown in the possessory notes table on this map. The values shown in the table and the resulting lot and block dimensions shown on this map exhibit a fairly good agreement between the possessory lines and the record plat dimensions once the error was isolated. It remains unclear whether the error is in the plat dimensions for Lot 7 or 8 of Block 1 or maybe in both.

The initial point of T.W. Ayer's 4th addition falls under the sidewalk. This sidewalk has been rebuilt with a row of decorative bricks inlaid into the sidewalk above the monument. These bricks are not held by mortar or cement and are easily removed and replaced. In partition plat 2008-1 (survey 1521-C) Mr. Coppock used a single monument from the Turner survey and rotated his work to match fence lines. In survey 1569-C Mr. Coppock used a different pipe by Turner and rotated to match different fences. In that survey Mr. Coppock first noted there was a discrepancy with dimensions on the Ayer's 4th Addition plat. In his survey 1613-C Mr. Coppock stated that he was "expanding" on his previous surveys and again shows the discrepancy in plat dimensions which he attributed to the south line of Lot 5, Block 2. It is unclear why Mr. Coppock did not use the plat monuments or resolve the issue of where the error was in relation to actual possessory lines. However, since his surveys are only based on different single monuments with different fence lines, I have not held them as controlling in this survey.

This survey was performed with an R7/R8 RTK GPS system. Monuments were set with a Trimble 5601 Robotic Total Station using radial methods.

BASIS OF BEARINGS
Bearings are based on GPS observations rotated 0°40'14" clockwise to true bearings. Distances shown are NAD83-1991 grid distances scaled by a combined scale factor of 0.99980897.

RECEIVED BY
Morrow County Surveyor
Date: 11-11-14
Rec'd By: S.K.H.
No.: 2014-1720
Folder No.: 1720

REGISTERED PROFESSIONAL LAND SURVEYOR
Stephen K. Haddock
OREGON
JULY 9, 2001
STEPHEN K. HADDOCK
56295LS
RENEWS 6-30-15

SURVEY FOR
Mrs. Dana Utter
33925 E. Crown Point Hwy
Corbett, OR 97019
LOCATION: SW1/4 S35, T2S, R26E, W.M.: MORROW COUNTY, OREGON

PROJECT DATE: August - September, 2014
Project No. 14-25 SCALE: 1" = 60'
WITNESS TREE SURVEYING
Stephen K. Haddock, PLS, CFedS
P.O. Box 6
Pilot Rock, Oregon 97868
(541) 443-2922