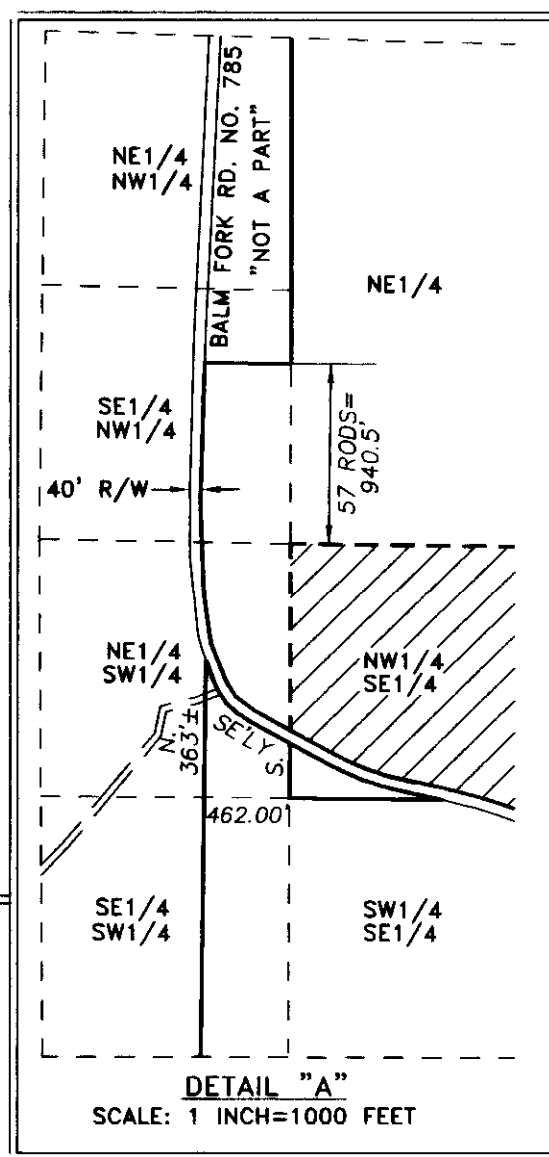
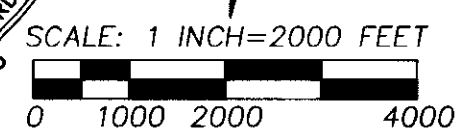
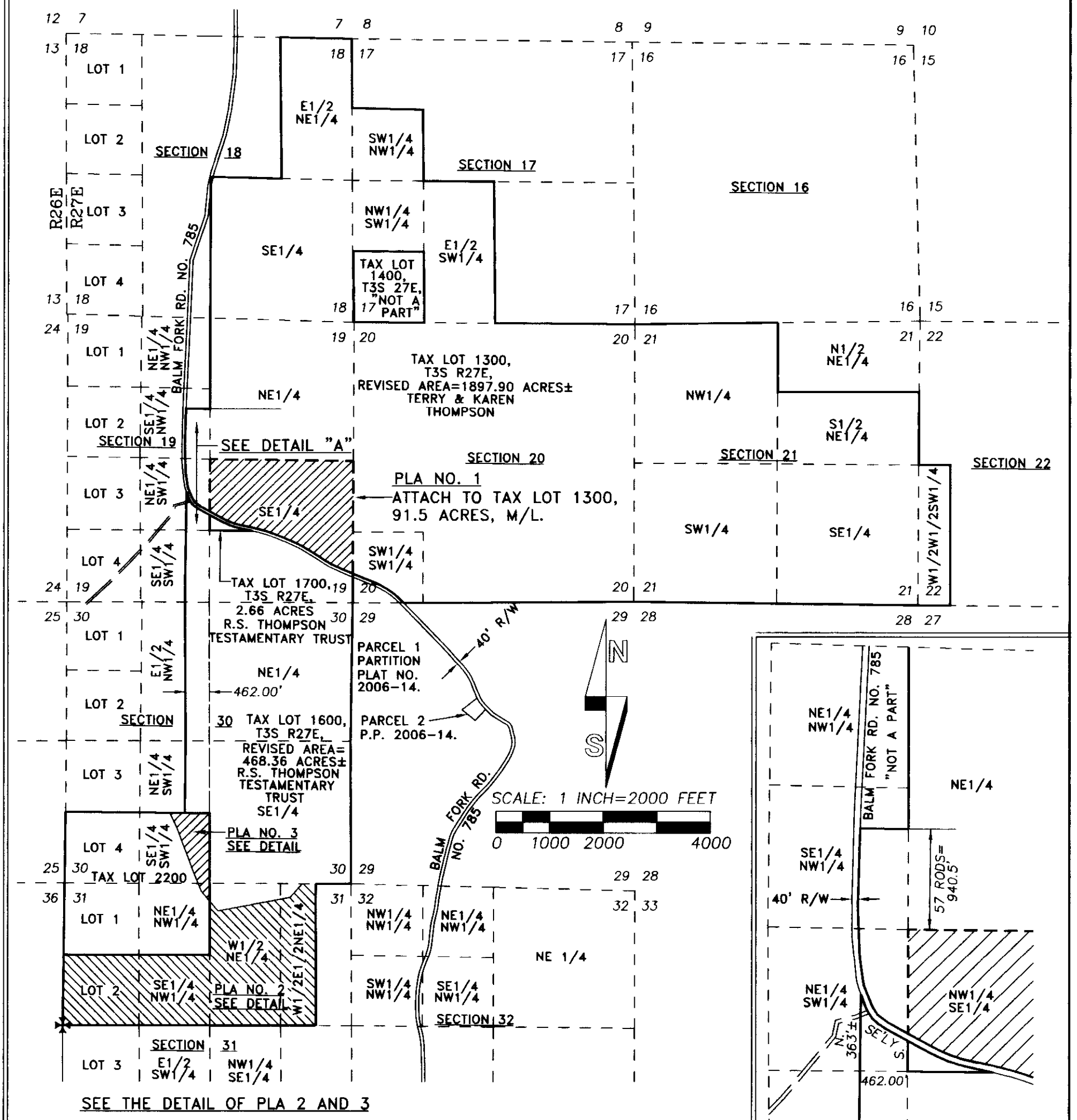
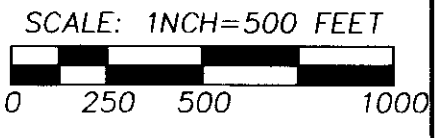


SHORT LINE TABLE

NO.	BEARING	DISTANCE
L1	N 40°49'41" W	240'±
L2	N 22°26'42" W	401.81'
L3	N 26°08'46" W	123.23'
L4	N 26°09'43" W	175'±
L5	S 40°49'41" E	236'±
L6	N 42°06'18" E	338'±
L7	N 42°06'18" E	46'±

NOTE: MEASURED COURSE BETWEEN THE REBAR AT NORTH END OF LINE 1 & SOUTH END OF LINE 5 IS SOUTH 40°49'41" EAST, 476.03'.
 NOTE: MEASURED COURSE BETWEEN THE REBAR AT NORTH END OF LINE 7 & SOUTH END OF LINE 6 IS SOUTH 42°06'18" WEST, 384.22'.



NARRATIVE

THIS MAP SHOWS THREE PROPERTY LINE ADJUSTMENTS (PLA)S. NEW DESCRIPTIONS FOR EACH PLA ARE PREPARED SEPARATELY AND WILL BE SUBMITTED WITH THE COUNTY APPLICATIONS FOR EACH PLA. DESCRIPTIONS ARE BASED ON RECORD TAX LOT DESCRIPTION DATA AND ON A PARTIAL SURVEY MADE FOR PLA NO. 2 AND 3. AFTER THE ADJUSTMENTS ARE COMPLETED, THE AREA DEPICTED AS PLA NO. 1 WILL ATTACH TO TAX LOT 1300, MAP 3527. THE AREA DEPICTED AS PLA NO. 2 WILL BECOME PART OF TAX LOT 2200, MAP 3527. THE AREA DEPICTED AS PLA NO. 3 WILL BECOME PART OF TAX LOT 1600, MAP 3527. THE ADJUSTMENTS ARE TO BE FILED AFTER THE ADJUSTMENTS ARE COMPLETED.

PLA NO. 1 IS UNSURVEYED. PORTIONS OF PLA NO. 2 AND 3, (ALONG AN EXISTING FENCE LINE) WERE SURVEYED AND MONUMENTED AS SHOWN. THE ORIGINAL MARKED STONE AT THE WEST ONE-QUARTER CORNER OF SECTION 31 IS TO BE REMONUMENTED DURING THE LAND PARTITION PHASE AND A CORNER RECORD WILL BE RECORDED WITH THE LAND PARTITION PLAT.

SURVEY MONUMENT TIES AND SETS WERE MADE WITH TRIMBLE GEODETIC GPS RECEIVERS BY REAL TIME KINEMATIC METHODS. CONTROLLING CORNERS AND NEW MONUMENTS SET WERE VERIFIED BY REDUNDANT OBSERVATIONS.

AREA SUMMARY

TAX LOT 1300, MAP 3527 EXISTING AREA=1806.40 ACRES, M/L. AFTER PLA NO. 1=1897.90 ACRES, M/L.	TAX LOT 2200, MAP 3527 EXISTING AREA=164.59 ACRES, M/L. AFTER PLA NO. 2=353.69 ACRES, M/L. AFTER PLA NO. 3=338.69 ACRES, M/L.
TAX LOT 1600, MAP 3527 EXISTING AREA=733.96 ACRES, M/L. AFTER PLA NO. 1=642.46 ACRES, M/L. AFTER PLA NO. 2=453.36 ACRES, M/L. AFTER PLA NO. 3=468.36 ACRES, M/L.	

LEGEND

- - SET 5/8" BY 24" REBAR WITH 1 1/4" RED PLASTIC CAP MARKED "OR PLS 1106 WA PLS 17372".
- x - APPROXIMATE CALCULATED POINT ASSOCIATED WITH SURVEYED PART OF PROPERTY LINE ADJUSTMENTS.
- ✱ - MONUMENT FOUND AS NOTED.
- (XOX) - RECORD DIMENSION FROM GLO SURVEY BY GEORGE WILLIAMS UNDER CONTRACT NO. 176 DATED JULY 20, 1872.
- L7 - INDICATES LINE TOO SHORT TO ANNOTATE AT DRAWING SCALE. SEE "SHORT LINE TABLE".
- - PERTENANT WIRE FENCE LINE.
- ▨ - INDICATES GENERAL LOCATION OF PROPERTY LINE ADJUSTMENTS.

N 00°03'40" W 2683.56'
 (S 00°09' W 40.00 CH)

36 31 TOWNSHIP CORNER.
 FOUND 3 1/2" ALUM. CAP ON 2 1/2" ALUM PIPE
 FOUND PER FERGUSON SURVEY NO. 2013-34-D.

RECEIVED BY
 Morrow County Surveyor
 Date: 1-2-2014
 Rec'd By: S.K.H.
 No.: 2014-1693C
 Folder No.: 1693

WELLS SURVEYING
 1 SW NYE AVENUE, SUITE B
 P.O. BOX 1696
 PENDLETON, OR 97801
 PHONE: (541) 276-6362

DATE: 07/13 DR. BY: WRW
 CK. BY: DMT NO: 13-1435

PROJECT: THOMPSON FAMILY
 PROPERTY LINE ADJUSTMENTS
 NO. 1, 2 AND 3

TOWNSHIPS 3 & 4 SOUTH
 RANGES 26 & 27 EAST, W.M.,
 MORROW COUNTY, OREGON.

REGISTERED PROFESSIONAL LAND SURVEYOR
Will R. Wells
 OREGON
 JULY 22, 1977
 WILLIAM R. WELLS
 1106
 RENEWS 6/30/14