

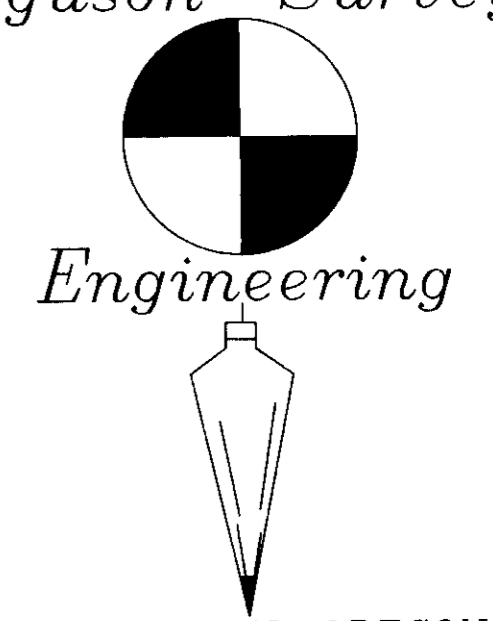
A Survey of the SE1/4 of the NW1/4 of Section 7, T.4S., R.27E., W.M., Morrow County, Oregon.

Surveyed For: Morrow County Public Works Department

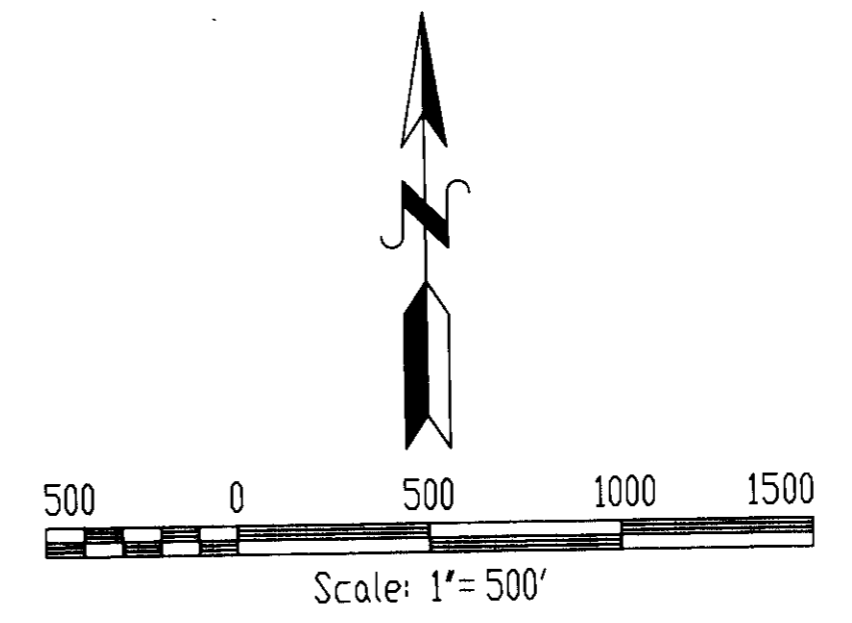
Surveyed By: Douglas M. Ferguson  
D. Mitchell Ferguson  
Brad Cates

Date Completed: April 20, 1998

Ferguson Surveying



MT. VERNON, OREGON  
PHONE (541)932-4520  
FAX (541)932-4430  
EMAIL DFSE@EONI.COM



**HISTORY**

The north line of T. 4S., R. 26E., W.M., was surveyed by George Williams under G. L. D. contract number 176, dated September 2, 1872.

The west line of T. 4S., R. 26E., W.M., and the subdivision of this township was surveyed by Zenas F. Moody under G. L. D. contract number 184, dated March 29, 1873.

**NARRATIVE**

The purpose of this survey was to locate the boundaries of the SE1/4 of the NW1/4 of Section 7, T. 4S., R. 27E., W.M.

In order to perform this survey, all the controlling corners for the subdivision of Section 7 were searched for. The only corner evidence found was at the SW corner of Section 7.

The NW corner of Section 7 was set at single proportionate measure from the found corners 1 mile north and 1 mile south.

The NE corner of Section 7 was set at double proportionate measure from found corners 1 mile north, 1-1/2 miles south, 1/2 mile east and the proportioned position of the NW corner of Section 7.

The SE corner of Section 7 was set at double proportionate measure from found corners 2 miles north, 1/2 mile south, 1/2 mile east and the found SW corner of Section 7.

All of the 1/4 corners were set at single proportionate measure as required.

Section 7 was then subdivided in a normal manner.

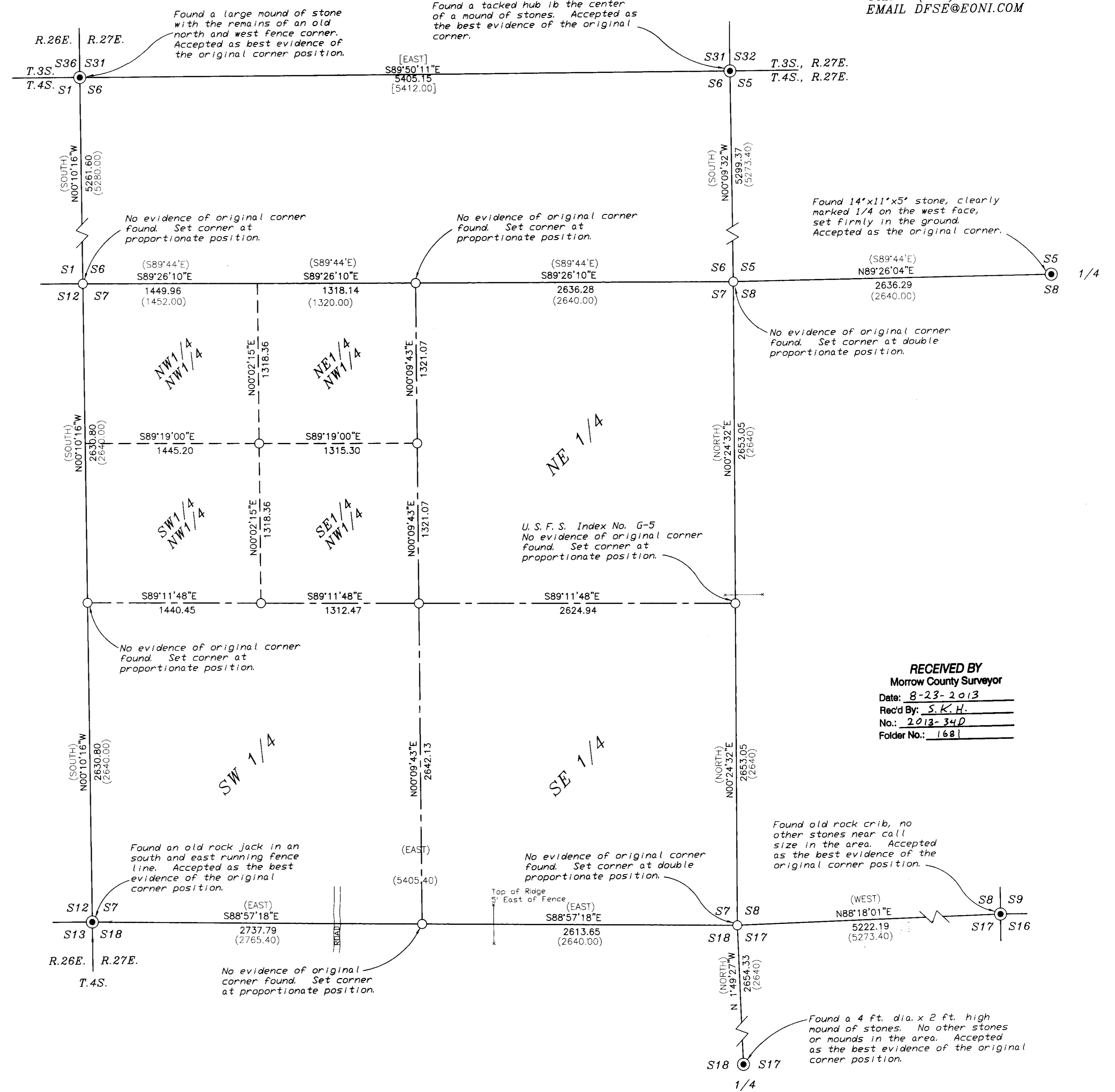
**LEGEND**

- [bearing/dist.] Record bearing/distance as recorded by George Williams under G. L. D. contract No. 176
- (bearing/dist.) Record bearing/distance as recorded by Zenas F. Moody under G. L. D. contract No. 184
- Fence
- Section Line
- - - Center of Section Line
- - - Section Line
- Set 2-1/2"x30' aluminum monument with 2-1/2" aluminum cap
- Found Corner Evidence, Set 2-1/2"x30' aluminum monument with 2-1/2" aluminum cap. See notes by symbol.

REGISTERED  
PROFESSIONAL  
LAND SURVEYOR

OREGON  
JULY 12, 1988  
DOUGLAS M. FERGUSON  
848

RENEWAL DATE:  
01/01/2014



**RECEIVED BY**  
Morrow County Surveyor

Date: 8-23-2013  
Rec'd By: S.K.H.  
No.: 2013-34D  
Folder No.: 1681