

THE SW 1/4 SEC. 26, AND THE NW 1/4 SEC. 35, T. 2 S., R. 26 E., W.M.

NARRATIVE

THE PURPOSE OF THIS SURVEY IS TO RESOLVE THE LOCATION OF THE EXISTING RIGHT-OF-WAY (R/W) AND TO SHOW THE NEW RW ACQUISITIONS FOR A PORTION OF THE HEPPNER HIGHWAY (N. COURT STREET) IN THE TOWN OF HEPPNER, OREGON AND RESET THE MONUMENTS DISTURBED AS PART OF THE OR207/74: COURT STREET (HEPPNER) IMPROVEMENTS PROJECT. THIS SURVEY ALSO PRESERVES THE LOCATION OF MONUMENTS THAT ARE SUBJECT TO DESTRUCTION AS PART OF THE UPCOMING BARRATT BLVD. RECONSTRUCTION (HEPPNER) PROJECT. THESE PROJECTS ARE LOCATED IN THE SW 1/4 SEC. 26 AND THE NW 1/4 SEC. 35, T. 2 S., R. 26 E., W.M. IN THE TOWN OF HEPPNER, MORROW COUNTY, OREGON.

COURT STREET RW WAS ESTABLISHED USING DAY'S ADDITION AND HEPPNER HEIGHTS ADDITION TO THE CITY OF HEPPNER ALONG WITH MORROW COUNTY SURVEYS (CS) C-508-K AND B-517-K, ODOT DRG. 2B22-1 AND MORROW COUNTY MICROFILM RECORDS M-2002-4338. THE ORIGINAL POSITION OF MONUMENTS FROM (CS) C-508-K WERE PERPETUATED BY POINTS 16, 5005 AND 5007.

THE CURVE DATA AND STATIONING FOR THE NEW RW CENTER LINE AND RW ACQUIRED ON COURT STREET ARE DEFINED USING ODOT DRG. IIB-01-0025.

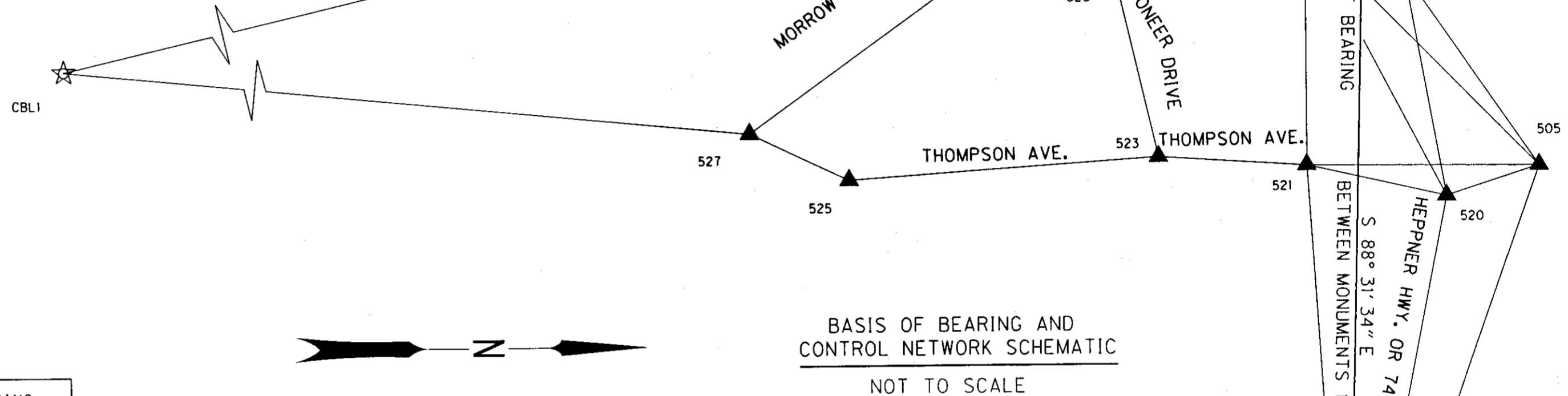
TO LOCATE BARRATT BLVD., THE EXTERIOR BOUNDARY OF THE HEPPNER HEIGHTS ADDITION TO HEPPNER WAS CALCULATED USING THE RECORD BEARINGS AND DISTANCES FROM SAID ADDITION IN CONJUNCTION WITH CS B-1005-E AND A-880-K. THE POSITION OF THE N 1/4 CORNER OF SECTION 35 AND POINTS 1020, 1021, 1022, AND 1024 WERE THEN HELD AND THE BEARINGS AND DISTANCES WERE ADJUSTED.

THE BASIS OF BEARING WAS BY LOCAL DATUM PLANE (LDP) ESTABLISHED BY GPS. THIS SURVEY UTILIZES A LDP WHICH IS RELATIVE TO THE OREGON COORDINATE SYSTEM OF 1983 (1998 ADJUSTMENT), NORTH ZONE, WITH RESPECT TO THE LOCAL LATITUDE AND GROUND ELEVATION. THE LDP COORDINATES DEFINE TRUE GROUND DISTANCES. TO CONVERT THE LDP COORDINATES, FOR THE CONTROL POINTS, TO THE OREGON COORDINATE SYSTEM OF 1983 (1998 ADJUSTMENT), NORTH ZONE, MULTIPLY THE LDP COORDINATES BY 0.99980207.

REFERENCES

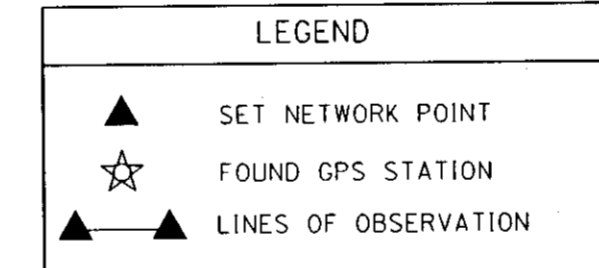
- BOOK N, PAGE 246; MORROW COUNTY RECORDS
- BOOK 29, PAGE 12; MORROW COUNTY DEED RECORDS
- BOOK 52, PAGE 523; MORROW COUNTY DEED RECORDS
- MORROW COUNTY MICROFILM RECORDS M-2002-4338
- MORROW COUNTY DEED RECORDS 2008-22630
- MORROW COUNTY DEED RECORDS 2008-22666
- BARRATT PARK ADDITION TO THE CITY OF HEPPNER
- DAY'S ADDITION TO THE CITY OF HEPPNER
- HEPPNER HEIGHTS ADDITION TO THE CITY OF HEPPNER
- MORROW'S SECOND ADDITION TO THE CITY OF HEPPNER
- MORROW COUNTY SURVEY A-880-K
- MORROW COUNTY SURVEY B-517-K
- MORROW COUNTY SURVEY B-1005-E
- MORROW COUNTY SURVEY C-286-K
- MORROW COUNTY SURVEY C-508-K
- ORE. DEPT. OF TRANS. DRAWING 2B22-1
- ORE. DEPT. OF TRANS. DRAWING IIB-01-0025

CBL1



NETWORK DISTANCE AND BEARING TABLE

AT	TO	DISTANCE (FT)	BEARING	AT	TO	DISTANCE (FT)	BEARING
CBL1	16	4,772.65'	N04°21'58"W	522	524	123.30'	S06°57'21"W
CBL1	527	4,022.16'	N01°07'46"E	523	525	369.73'	S03°53'32"E
504	520	629.70'	N78°41'10"W	523	526	217.80'	S76°50'38"W
504	521	657.03'	S86°15'42"W	524	5	199.23'	S01°37'22"E
504	1013	182.23'	S88°58'45"E	524	526	125.17'	S33°53'59"W
505	504	693.92'	S70°17'13"E	525	527	130.92'	S25°25'33"W
505	520	116.18'	S17°56'36"E	526	5	114.86'	S33°57'52"W
505	521	276.91'	S00°29'31"W	527	5	421.01'	N35°36'35"W
505	522	394.46'	S45°25'17"W	529	510	381.09'	N12°22'13"E
510	505	527.11'	N55°16'39"E	529	531	282.21'	N13°19'12"W
510	522	154.05'	N81°16'22"E	530	16	21.14'	N87°08'05"E
520	521	170.70'	S12°55'16"W	530	510	103.56'	S18°48'08"E
520	522	357.78'	S62°17'43"W	530	520	510.70'	N79°39'31"E
521	522	278.59'	N89°59'33"W	530	522	200.10'	S68°05'30"E
521	523	177.05'	S03°46'00"W	531	510	176.18'	N56°20'52"E
				531	530	226.09'	N30°04'06"E



RECEIVED BY  
Morrow County Surveyor  
Date: 6-27-2013  
Rec'd By: S.K.H.  
No.: 2013-30C  
Folder No.: 1677

REGISTERED PROFESSIONAL LAND SURVEYOR  
*Robert E. Butler*  
OREGON July 25, 1995  
ROBERT ERICH BUTLER 2733  
EXPIRES: 12/31/2013

SET AND RECOVERED MONUMENT LIST

PT. NO.	LDP NORTHING	LDP EASTING	STATION & ALIGNMENT	OFFSET	DATE	DESCRIPTION & REFERENCE DOCUMENTS
CBL1	613,091.085	8,448,267.232	N/A N/A	N/A	4/15/2011	FOUND 3/2" BRASS DISK, MARKED "CBL-1, 1980
5	617,454.742	8,448,101.366	N/A GILMORE ST.	N/A	4/15/2011	SET "PK" NAIL
16	617,849.885	8,447,903.892	20+15.97 COURT ST. (OR 74)	34.20 Lt.	4/15/2011	FOUND 2 1/2" DIA. BRASS DISK 6" BELOW PAVEMENT, (C.S. C-286-K), DESTROYED BY CONSTRUCTION. RESET WITH A 3" DIA. BRASS DISK IN MONUMENT BOX, MARKED " W 1/16, S 26, S35, 2011, PLS 2733"
504	617,819.083	8,449,044.980	31+51.04 COURT ST. (OR 74)	37.91 Rt.	4/15/2011	FOUND PK NAIL IN FAIRVIEW WAY, 27.0 FT EAST OF STOP SIGN, 30.0 FT FROM FIRE HYDRANT, 1.50 FT. FROM THE NORTH EDGE OF PAVEMENT.
505	618,053.148	8,448,391.626	24+74.25 COURT ST. (OR 74)	166.22 Lt.	4/15/2011	FOUND HUB AND TACK IN THE FAIRGROUNDS PARKING LOT.
510	617,752.907	8,447,958.388	N/A BARRATT BLVD.	N/A	4/15/2011	FOUND HUB AND TACK, NORTH 2.70 FT BACK RAIL, 46.7 FT WEST OF SEWER MANHOLE, 38.7 FT FROM TELEPHONE RISER NO. 390
520	617,942.619	8,448,427.418	25+19.15 COURT ST. (OR 74)	62.43 Lt.	4/15/2011	FOUND 12" NAIL IN NORTHWEST CORNER OF FOOTBALL FIELDS UPPER PARKING LOT, 23.0 FT EAST OF THE NORTH GATE POST, 31.1 FT NORTH OF THE SCHOOL SIGN.
521	617,776.245	8,448,389.249	N/A BARRATT BLVD.	N/A	4/15/2011	SET HUB AND TACK ON SHOULDER AT BARRATT BLVD. AND THOMPSON, 2.30 FT. FROM NORTH EP, 4.20 FT FROM FACE OF RAIL, 15.1 FT FROM POLE 3-2-2
522	617,776.281	8,448,110.656	N/A BARRATT BLVD.	N/A	4/15/2011	SET HUB AND TACK ON SHOULDER OF BARRATT BLVD AND GILMORE, 1.60 FT FROM NORTH EP, 4.0 FT FROM FACE OF RAIL, 16.0 FROM POLE 3-3F-15
523	617,599.574	8,448,377.618	N/A THOMPSON AVE.	N/A	5/15/2011	SET PK NAIL IN NORTHWEST CORNER OF THOMPSON AND PIONEER, 8.0 FT FROM STOP SIGN, 31.3 FT FROM TELEPHONE RISER NO. 605
524	617,653.891	8,448,095.724	N/A GILMORE ST.	N/A	5/15/2011	SET 12" NAIL IN GRASS, 4.0 FT EAST OF GILMORE ACROSS FROM ALLEY, 29.6 FT FROM POLE 3-3F 14, 30.2 FT FROM POLE WITH NO NUMBER
525	617,230.701	8,448,402.715	N/A THOMPSON AVE.	N/A	5/15/2011	SET PK NAIL ON EAST SIDE OF PAVEMENT ON THOMPSON STREET 1.10 FT FROM CONCRETE WALK.
526	617,550.002	8,448,165.534	N/A PIONEER DR.	N/A	5/15/2011	SET PK NAIL IN PIONEER AVE., 1.0 FT FROM EP, 27.3 FT FROM EDGE OF CONCRETE HOSPITAL SIGN, 51.8 FT FROM GILMORE STREET SIGN.
527	617,112.459	8,448,346.504	N/A THOMPSON AVE.	N/A	5/15/2011	FOUND PK NAIL IN HOSPITAL PARKING LOT 2.90 FT EAST OF EP, 71.0 FT FROM TELEPHONE RISER NO. 0226
529	617,380.662	8,447,876.748	N/A BARRATT BLVD.	N/A	4/15/2011	SET PK AT BARRATT BLVD AND COURT.
530	617,850.942	8,447,925.010	20+32.17 COURT ST. (OR 74)	23.94 Lt.	4/15/2011	SET PK NAIL NEAR WHEEL CHAIR RAMP ON STANSBURY STREET.
531	617,655.276	8,447,811.731	18+19.21 COURT ST. (OR 74)	21.51 Lt.	4/15/2011	FOUND PK NAIL 0.20 FT EAST OF WEST CURB , 7.0 FT FROM FENCE.
1013	617,815.836	8,449,227.182	33+30.97 COURT ST. (OR 74)	67.42 Rt.	4/15/2011	FOUND 2" DIA. PIPE, 1/4 CORNER OF SECTIONS 26 & 35, NOTED ON HEPPNER HEIGHTS ADDITION TO HEPPNER

OREGON DEPARTMENT OF TRANSPORTATION  
HORIZONTAL CONTROL, RECOVERY, RETRACEMENT, & RIGHT-OF-WAY MONUMENTATION  
HEPPNER HIGHWAY @ N. COURT ST. & CITY OF HEPPNER @ BARRATT BLVD.  
HEPPNER HIGHWAY (OR 74)  
MORROW COUNTY  
ODOT REGION 5  
3012 ISLAND AVE.  
LA GRANDE, OR. 97850-9497  
OCTOBER 20, 2012  
NOT TO SCALE  
SHEET 1 OF 3

THE SW 1/4 SEC. 26, AND THE NW 1/4 SEC. 35, T. 2 S., R. 26 E., W.M.

1671

RIGHT-OF-WAY POINTS LIST

PT. NO.	LDP NORTHING	LDP EASTING	STATION & ALIGNMENT	OFFSET	DATE	DESCRIPTION
5000	617,603.215	8,447,805.501	17+68.00 Court St. (OR 74)	28.64' Lt.	5/24/2013	SET 5/8" X 30" IRON ROD W/ 1 1/2" DIA. ALUMINUM CAP MARKED "OREGON STATE HWY DIV"
5001	617,603.129	8,447,801.140	17+68.00 Court St. (OR 74)	33.00' Lt.	5/24/2013	SET 5/8" X 30" IRON ROD W/ 1 1/2" DIA. ALUMINUM CAP MARKED "OREGON STATE HWY DIV"
5002	617,647.488	8,447,800.267	18+12.36 Court St. (OR 74)	33.00' Lt.	5/24/2013	SET 5/8" X 30" IRON ROD W/ 1 1/2" DIA. ALUMINUM CAP MARKED "OREGON STATE HWY DIV"
5003	617,697.342	8,447,804.554	18+55.53 Court St. (OR 74)	33.00' Lt.	5/24/2013	SET 5/8" X 30" IRON ROD W/ 1 1/2" DIA. ALUMINUM CAP MARKED "OREGON STATE HWY DIV"
5004	617,878.997	8,447,980.321	20+87.00 Court St. (OR 74)	29.38' Lt.	5/24/2013	SET 1" DIA. BRASS DISK IN WALK MARKED "ODOT"
5005	617,878.717	8,447,985.890	20+91.69 Court St. (OR 74)	27.81' Lt.	5/24/2013	MONUMENT FROM UMATILLA C. S. NO. C-508-K DESTROYED, RESET 1" DIA. BRASS DISK IN WALK MARKED "ODOT"
5006	617,884.137	8,448,002.638	21+07.00 Court St. (OR 74)	30.00' Lt.	5/24/2013	SET 5/8" X 30" IRON ROD W/ 1 1/2" DIA. ALUMINUM CAP MARKED "OREGON STATE HWY DIV"
5007	617,935.437	8,448,105.920	22+16.71 Court St. (OR 74)	65.39' Lt.	5/24/2013	MONUMENT FROM UMATILLA C. S. NO. C-508-K DESTROYED, RESET 5/8" X 30" IRON ROD W/ 1 1/2" DIA. ALUMINUM CAP MARKED "OREGON STATE HWY DIV"
5008	617,896.922	8,448,087.729	21+93.00 Court St. (OR 74)	30.00' Lt.	5/24/2013	SET 5/8" X 30" IRON ROD W/ 1 1/2" DIA. ALUMINUM CAP MARKED "OREGON STATE HWY DIV"

Vacation Doc. M-2002-4338 Ord. No. 02-533

School District Number One of Morrow County 29-12 M-2002-4338

School District Number One of Morrow County 51-386

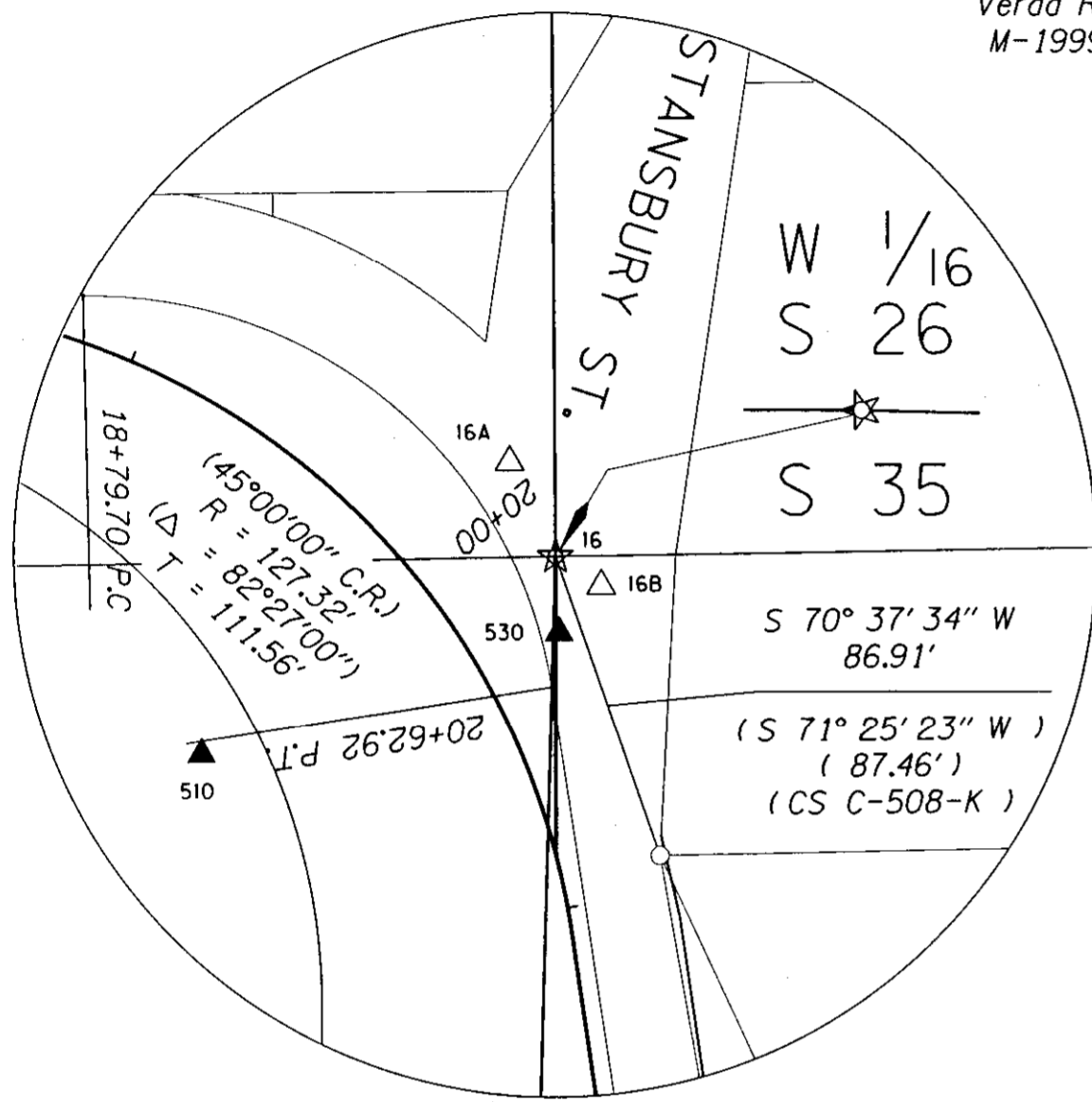
James Robert Hager and Verda Ray Hager M-1999-60068

School District Number One of Morrow County 40-613

School District No. One of Morrow County Bk. 52, Pg. 523

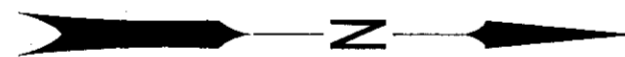
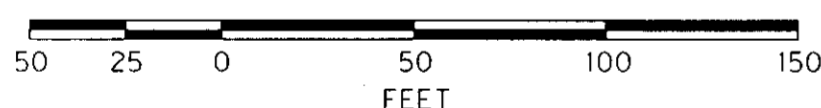
SEE DETAIL A

School District No. 1 of Morrow County Bk. 53, Pg. 601



DETAIL A

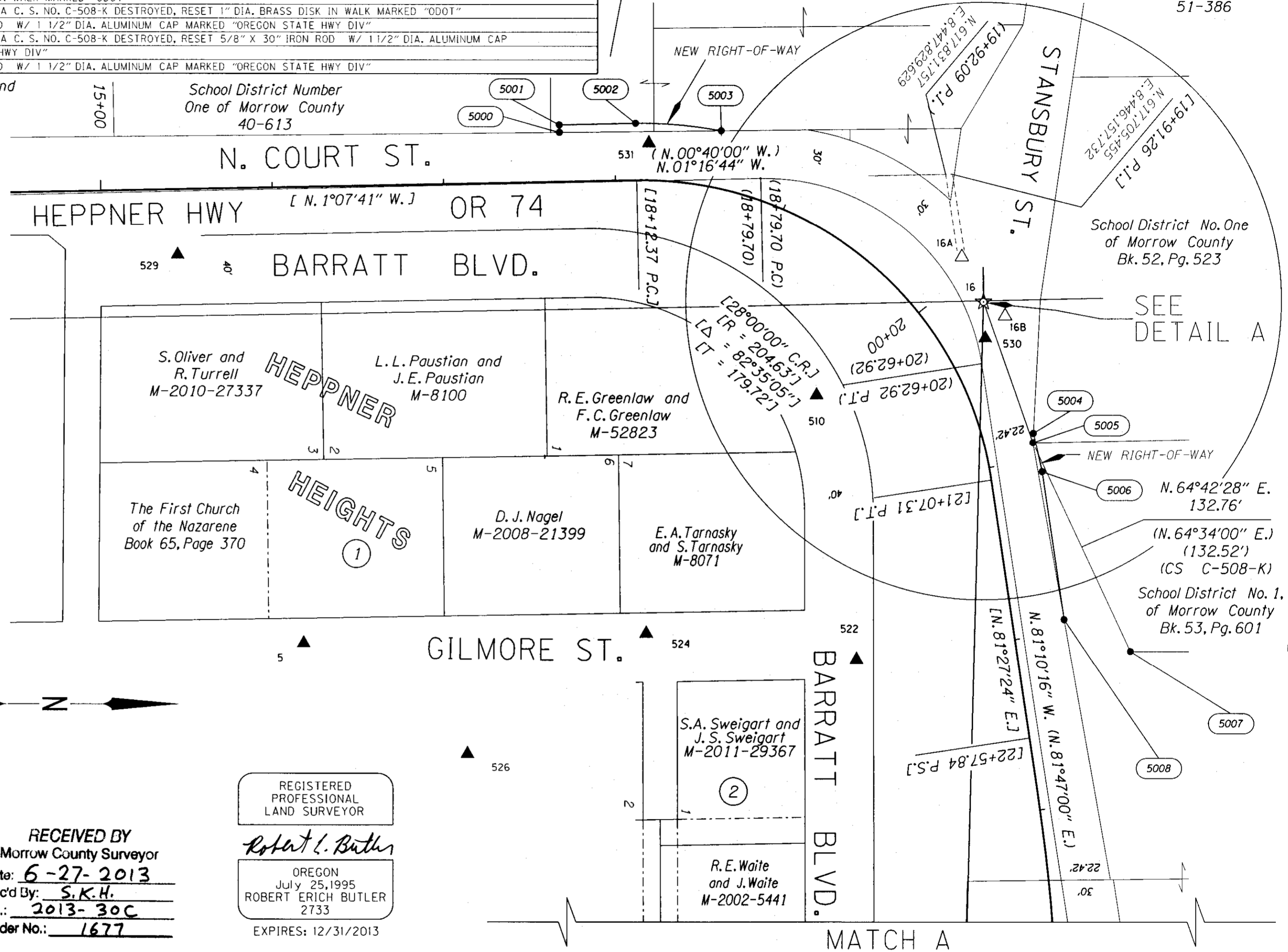
SCALE 1" = 50'



LEGEND	
●	SET R/W MONUMENT
○	FOUND MONUMENT
☆	GPS POINT
▲	SET NETWORK POINT
( )	RECORD DATA PER ODOT DRG. 2B-22-1 USED FOR OLD CENTERLINE AND EXISTING RIGHT-OF-WAY OR AS NOTED
[ ]	RECORD DATA PER ODOT DRG. 11B-01-25 USED FOR NEW CENTERLINE AND NEW RIGHT-OF-WAY
—	EXISTING RIGHT-OF-WAY
—	NEW RIGHT-OF-WAY
△	SET REFERENCE POINT
○	RIGHT-OF-WAY POINT NO.

RECEIVED BY  
Morrow County Surveyor  
Date: 6-27-2013  
Rec'd By: S.K.H.  
No.: 2013-30C  
Folder No.: 1677


REGISTERED PROFESSIONAL LAND SURVEYOR  
*Robert L. Butler*  
OREGON  
July 25, 1995  
ROBERT ERICH BUTLER  
2733  
EXPIRES: 12/31/2013



MATCH A

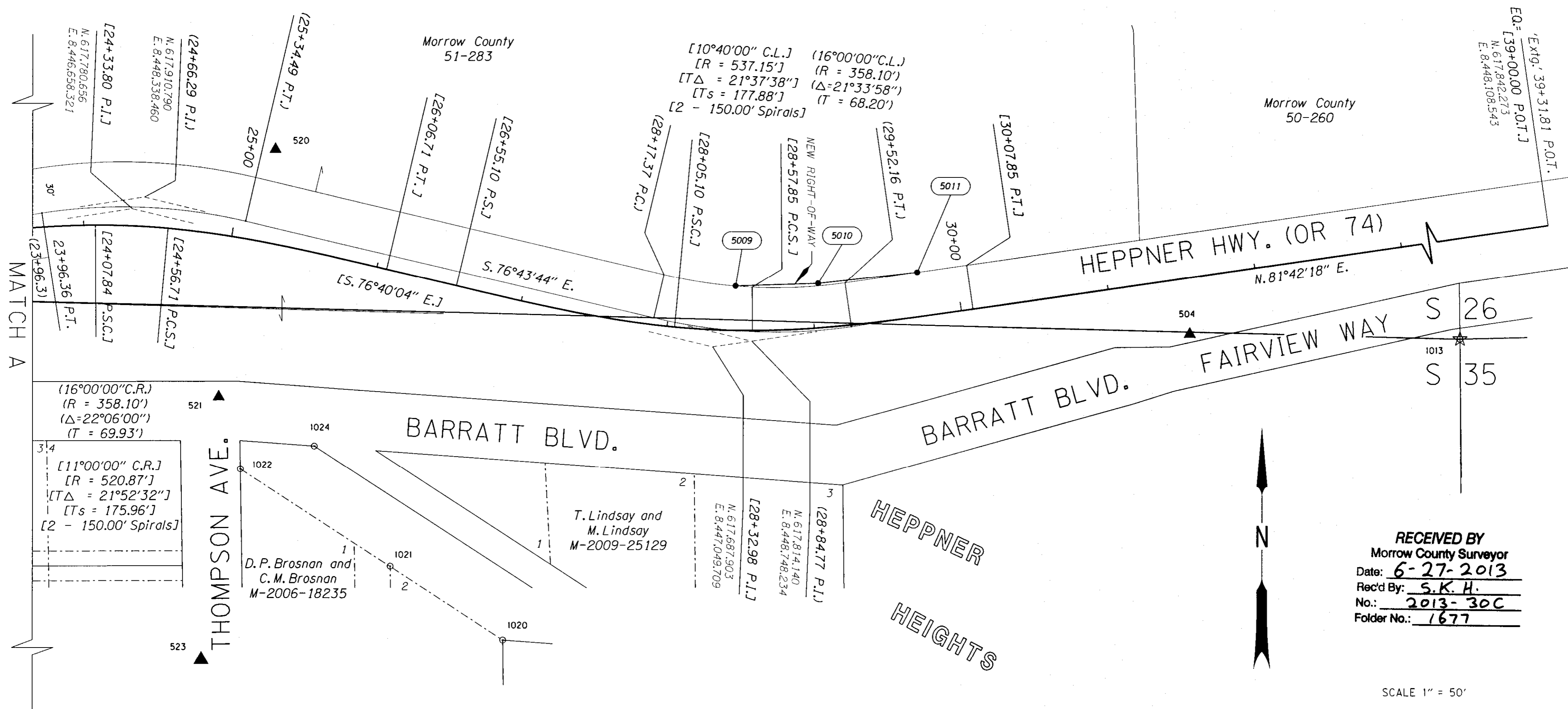
SET AND RECOVERED MONUMENT LIST

PT. NO.	LDP NORTHING	LDP EASTING	STATION & ALIGNMENT	OFFSET	DATE	DESCRIPTION & REFERENCE DOCUMENTS
5	617,454.742	8,448,101.366	N/A GILMORE ST.	N/A	4/15/2011	FOUND 5/8" IRON ROD
16	617,849.885	8,447,903.892	20+15.97 COURT ST. (OR 74)	34.20 Lt.	4/15/2011	SET 3" DIA. BRASS DISK IN MONUMENT BOX, MARKED " W 1/16, S 26, S35, 2011, PLS 2733"
16A	617,837.281	8,447,877.893	19+92 COURT ST. (OR 74)	40.02 Lt.	4/15/2011	SET 1" DIA. BRASS DISK IN THE CURB LINE
16B	617,862.435	8,447,912.092	20+27.53 COURT ST. (OR 74)	40.38 Lt.	4/15/2011	SET 1" DIA. BRASS DISK IN THE CURB LINE
510	617,752.907	8,447,958.388	N/A BARRATT BLVD.	N/A	4/15/2011	FOUND HUB AND TACK, NORTH 2.70 FT BACK RAIL, 46.7 FT WEST OF SEWER MANHOLE, 38.7 FT FROM TELEPHONE RISER NO. 390
522	617,776.281	8,448,110.656	N/A BARRATT BLVD.	N/A	4/15/2011	SET HUB AND TACK ON SHOULDER OF BARRATT BLVD AND GILMORE, 1.60 FT FROM NORTH EP, 4.0 FT FROM FACE OF RAIL, 16.0 FROM POLE 3-3F-15
524	617,653.891	8,448,095.724	N/A GILMORE ST.	N/A	5/15/2011	SET HUB AND TACK ON SHOULDER OF BARRATT BLVD AND GILMORE, 1.60 FT FROM NORTH EP, 4.0 FT FROM FACE OF RAIL, 16.0 FROM POLE 3-3F-15
526	617,550.002	8,448,165.534	N/A PIONEER DR.	N/A	5/15/2011	SET 12" NAIL IN GRASS, 4.0 FT EAST OF GILMORE ACROSS FROM ALLEY, 29.6 FT FROM POLE 3-3F-14, 30.2 FT FROM POLE WITH NO NUMBER
529	617,380.662	8,447,876.748	N/A BARRATT BLVD.	N/A	4/15/2011	SET PK AT BARRATT BLVD AND COURT, 24.6 FT FROM STOP SIGN, 22.2 FT FROM MANHOLE, 1.80 FT FROM WEST EP, 14.0 FT NORTH END OF CURB
530	617,850.942	8,447,925.010	20+32.17 COURT ST. (OR 74)	N/A	4/15/2011	SET PK NAIL NEAR WHEEL CHAIR RAMP OF STANSBURY STREET, 2.20 FT FROM FACE OF CURB, 2.50 FT FROM EDGE OF CONCRETE PAVEMENT, POINT IS IN ASPHALT.
531	617,655.276	8,447,811.731	18+19.21 COURT ST. (OR 74)	N/A	4/15/2011	FOUND PK NAIL 0.20 FT EAST OF WEST CURB , 7.0 FT FROM FENCE, 50.0 FT IN CRACK FROM SOUTH END OF FENCE.

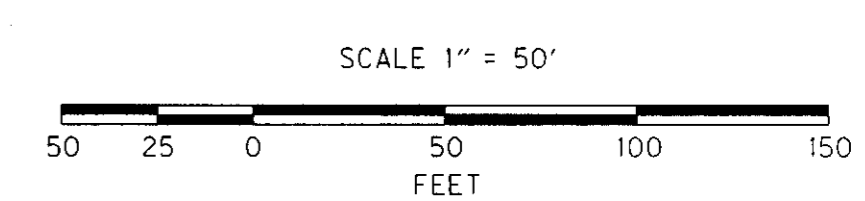
OREGON DEPARTMENT OF TRANSPORTATION  
HORIZONTAL CONTROL, RECOVERY,  
RETRACEMENT, & RIGHT-OF-WAY MONUMENTATION  
  
HEPPNER HIGHWAY @ N. COURT ST. &  
CITY OF HEPPNER @ BARRATT BLVD.  
HEPPNER HIGHWAY (OR 74)  
MORROW COUNTY  
ODOT REGION 5  
3012 ISLAND AVE.  
LA GRANDE, OR. 97850-9497  
OCTOBER 20, 2012  
SCALE 1" = 50'  
SHEET 2 OF 3

1677

THE SW 1/4 SEC. 26, AND THE NW 1/4 SEC. 35, T. 2 S., R. 26 E., W.M.



RECEIVED BY  
Morrow County Surveyor  
Date: 6-27-2013  
Rec'd By: S.K.H.  
No.: 2013-30C  
Folder No.: 1677



RIGHT-OF-WAY POINTS LIST

PT. NO.	LDP NORTHING	LDP EASTING	STATION & ALIGNMENT	OFFSET	DATE	DESCRIPTION
5009	617,851.333	8,448,737.228	28+46.00 Court St. (OR 74)	30.03' Lt.	5/24/2013	SET 5/8" X 30" IRON ROD W/ 1 1/2" DIA. ALUMINUM CAP MARKED "OREGON STATE HWY DIV"
5010	617,853.235	8,448,793.290	29+05.00 Court St. (OR 74)	30.00' Lt.	5/24/2013	SET 5/8" X 30" IRON ROD W/ 1 1/2" DIA. ALUMINUM CAP MARKED "OREGON STATE HWY DIV"
5011	617,860.767	8,448,860.103	29+74.00 Court St. (OR 74)	29.92' Lt.	5/24/2013	SET 5/8" X 30" IRON ROD W/ 1 1/2" DIA. ALUMINUM CAP MARKED "OREGON STATE HWY DIV"


LEGEND

- SET R/W MONUMENT
- FOUND MONUMENT
- ☆ GPS POINT
- ▲ SET NETWORK POINT
- ( ) RECORD DATA PER ODOT DRG. 2B-22-1 USED FOR OLD CENTERLINE AND EXISTING RIGHT-OF-WAY OR AS NOTED
- [ ] RECORD DATA PER ODOT DRG. 11B-01-25 USED FOR NEW CENTERLINE AND NEW RIGHT-OF-WAY
- EXISTING RIGHT-OF-WAY
- NEW RIGHT-OF-WAY
- △ SET REFERENCE POINT
- RIGHT-OF-WAY POINT NO.

REGISTERED PROFESSIONAL LAND SURVEYOR  
*Robert L. Butler*  
OREGON  
July 25, 1995  
ROBERT ERICH BUTLER  
2733  
EXPIRES: 12/31/2013

SET AND RECOVERED MONUMENT LIST

PT. NO.	LDP NORTHING	LDP EASTING	STATION & ALIGNMENT	OFFSET	DATE	DESCRIPTION & REFERENCE DOCUMENTS
504	617,819.083	8,423,944.290	31+51.04 COURT ST. (OR 74)	37.91 Rt.	4/15/2011	FOUND PK NAIL IN FAIRVIEW WAY AT THE EAST END OF BARRATT BLVD., 27.0 FT EAST OF STOP SIGN, 30.0 FT FROM FIRE HYDRANT.
505	618,053.148	8,448,391.626	24+74.25 COURT ST. (OR 74)	166.22 Lt.	4/15/2011	FOUND HUB AND TACK IN THE FAIRGROUNDS PARKING LOT, 2.70 FT. SOUTH OF THE PEN CORNER, 35 FT. WEST OF THE FOOTBALL FIELD FENCE.
520	617,942.619	8,448,427.418	25+19.15 COURT ST. (OR 74)	62.43 Lt.	4/15/2011	FOUND 12" NAIL IN NORTHWEST CORNER OF FOOTBALL FIELDS UPPER PARKING LOT, 23.0 FT EAST OF THE NORTH GATE POST, 31.1 FT NORTH OF THE SCHOOL SIGN.
521	617,776.245	8,448,389.249	N/A BARRATT BLVD.	N/A	4/15/2011	SET HUB AND TACK ON SHOULDER AT BARRATT BLVD. AND THOMPSON, 2.30 FT. FROM NORTH EP, 4.20 FT FROM FACE OF RAIL, 15.1 FT FROM POLE 3-2-2
523	617,599.574	8,448,377.618	N/A THOMPSON AVE.	N/A	5/15/2011	SET PK NAIL IN NORTHWEST CORNER OF THOMPSON AND PIONEER, 8.0 FT FROM STOP SIGN, 31.3 FT FROM TELEPHONE RISER NO. 605
1012	616,880.600	8,448,275.784	N/A THOMPSON ST.	N/A	4/15/2011	FOUND BENT PIPE, MORROW COUNTY SURVEY (CS 1589-C)
1013	617,815.836	8,449,227.182	33+30.97 COURT ST. (OR 74)	67.42 Rt.	4/15/2011	FOUND 2" DIA. PIPE, 1/4 CORNER
1020	617,613.000	8,448,580.774	21+25.75 BARRATT BLVD.	139.42 Rt.	5/16/2011	FOUND BENT 5/8" IRON ROD, MORROW COUNTY SURVEY (CS AB80K-70)
1021	617,662.300	8,448,504.870	20+25.07 BARRATT BLVD.	94.91 Rt.	5/16/2011	FOUND SLIGHTLY BENT 5/8" IRON ROD, MORROW COUNTY SURVEY (CS AB80K-70)
1022	617,727.530	8,448,403.849	19+20.70 BARRATT BLVD.	38.88 Rt.	5/16/2011	FOUND 5/8" IRON ROD NEAR BROKEN T-POST, MORROW COUNTY SURVEY (CS AB80-70)
1024	617,743.000	8,448,453.650	N/A BARRATT BLVD.	N/A	5/16/2011	FOUND 5/8" IRON ROD NEAR BROKEN T-POST, MORROW COUNTY SURVEY (CS AB80K-70)

OREGON DEPARTMENT OF TRANSPORTATION  
HORIZONTAL CONTROL, RECOVERY,  
RETRACEMENT, & RIGHT-OF-WAY MONUMENTATION  
 HEPPNER HIGHWAY @ N. COURT ST. &  
CITY OF HEPPNER @ BARRATT BLVD.  
HEPPNER HIGHWAY (OR 74)  
MORROW COUNTY  
ODOT REGION 5  
3012 ISLAND AVE.  
LA GRANDE, OR. 97850-9497  
OCTOBER 20, 2012  
SCALE 1" = 50'  
SHEET 3 OF 3