

BASIS OF BEARING AND CONTROL NETWORK SCHEMATIC

NOT TO SCALE

SURVEY NARRATIVE

THE PURPOSE OF THIS SURVEY IS TO PERPETUATE EXISTING MONUMENTATION, AND RESOLVE THE EXISTING RIGHT OF WAY (RW) FOR A PORTION OF SPERRY AND MORGAN STREETS IN THE CITY OF HEPPNER, MORROW COUNTY, OREGON. FOR THIS SURVEY, WE ESTABLISHED A CONTROL NETWORK AND RECOVERED THE POSITION OF MONUMENTS IN THE AREA FOR THE OREGON DEPARTMENT OF TRANSPORTATION (ODOT) AS PART OF THE SPERRY STREET: SPERRY ST- MORGAN ST (HEPPNER) PROJECT.

THE ORIGINAL PLAT FOR THIS PART OF THE CITY OF HEPPNER WAS PRESTON LOONEYS ADDITION TO THE TOWN OF HEPPNER DATED MAY 28, 1884 AS DESCRIBED IN BOOK K, PAGE 675, WITH THE PLAT BEING LOCATED ON PAGE 683 OF THE SAME BOOK. THE MT. VERNON ADDITION TO HEPPNER, WAS THEN FILED ON MARCH 18, 1890, IN DEED BOOK E, PG. 591. THERE APPEARS TO BE NO DIMENSIONS ON THIS DOCUMENT AND IT ONLY SHOWS LOTS 6, 7, AND 8 OF BLOCK 4 OF THE LOONEY ADDITION. THERE IS ALSO A MAP OF MT. VERNON ADDITION TO THE TOWN OF HEPPNER DATED NOVEMBER 27, 1888. THE LOT NUMBERING ON THIS PLAT DOES NOT AGREE WITH THE EARLIER MT. VERNON ADDITION, THE DISTANCE FROM THE SECTION LINE AND THE LOCATION OF BIRCH STREET DO NOT FIT VERY WELL. THE SECOND MT. VERNON ADD. TO THE CITY OF HEPPNER WAS FILED MAY 4, 1904 IN 'BOOK 'O' DEEDS, PG. 462-463.' THIS PLAT BEGINS AT THE NORTHEAST CORNER OF LOT 9 OF BLOCK 10 OF THE MT. VERNON ADDITION. IN LAYING OUT THIS BLOCK THERE WAS A MISCLOSURE OF 5.92' USING THE DEED CALLS.

THE RESOLUTION IS AS FOLLOWS:

1. THE POSITION OF POINTS 1003 AND 1004 WERE HELD TO LOCATE PRESTON LOONEY'S ADDITION TO THE TOWN OF HEPPNER AND THE BEARINGS OF THE LINES WERE ROTATED 0°34'57" COUNTER CLOCKWISE TO MATCH THE BEARING OF THE SECTION LINE. THIS MADE THE TIE TO THE SECTION CORNER S.17°36'43"E, 39.054' FROM THAT DESCRIBED BY SAID PLAT. THIS DISCREPANCY IS PROBABLY DO TO THE FLOOD WHICH DESTROYED THE AREA IN 1903. NOT ENOUGH EVIDENCE REMAINED TO PUT THINGS BACK IN THEIR ORIGINAL POSITION. THE BEARINGS OF ALL OTHER PLAT WERE ROTATED 0°34'57" COUNTER CLOCKWISE ALSO.
2. ASSUME 50' WIDTH AND USING POSITIONS OF PTS. 1000 AND 1001 TO DEFINE LOCATION OF RIVERSIDE ST.
3. HOLD POSITION OF PT. 1003 AS THE SOUTHEAST CORNER OF BLOCK 10 OF THE 1888 MAP OF MT. VERNON. INTERSECT BLOCK TEN WITH BIRCH STREET, DISTANCE FROM MORGAN ST. TO BIRCH ST. SHORTENED FROM 710.3' TO 644.67'. THE SHORTENED DISTANCE FITS MUCH BETTER WITH THE MEASURED DISTANCE BETWEEN MORGAN AND BIRCH STREETS AND ALSO FITS WELL THE DISTANCE BETWEEN SAID STREETS ON THE PRESTON LOONEY ADDITION.
4. ASSUME THE NORTHEAST CORNER OF LOT 9 OF BLOCK 10 OF THE MT. VERNON ADDITION IS AT THE INTERSECTION OF THE SOUTHERLY RW LINE OF THORN STREET FROM THE LOONEY PLAT AND THE SOUTHWESTERLY RW LINE OF RIVERSIDE STREET. MATCHED DEED ANGLES AND DISTANCES, AND CHANGED RECORD CALL FROM S. 54°34' E. 548' TO S.55°4'50"E, 542.187' TO CLOSE THE BOUNDARY. 5. ROTATE BEARING OF MORGAN STREET BY HOLDING THE POSITION OF PTS. 1010 AND 1003 TO ESTABLISH SOUTHERLY RW STREET, PLACE NORTHERLY RW LINE 60' PARALLEL TO IT.
6. ESTABLISH NORTHEAST CORNER OF LOT 6, BLOCK 2 OF LOONEY'S ADDITION AT RECORD DISTANCE OF 111.74' FROM PT. 1008 (SEE CS C-1354-M). PLACE SW CORNER OF LOT 6 BLOCK 3 OF SAID ADDITION AT RECORD DISTANCE FROM SAID POINT.
7. ESTABLISHED THE SOUTHWEST CORNER OF LOT 6, BLOCK 3 OF LOONEY'S ADDITION USING CALCULATED DISTANCES FROM RECORD FROM THE NE CORNER LOT 6, BLOCK 2.

THE BASIS OF BEARING WAS ESTABLISHED BY GPS, USING A LOCAL DATUM PLANE (LDP) DERIVED FROM AN OPUS SOLUTION OBSERVED AT POINT CBL-1. THIS SURVEY UTILIZES A LDP WHICH IS RELATIVE TO THE OREGON COORDINATE SYSTEM (OCS) OF 1983 (CORS96, EPOCH 2002), NORTH ZONE, WITH RESPECT TO THE LOCAL LATITUDE AND GROUND ELEVATION. THE LDP COORDINATES DEFINE TRUE GROUND DISTANCES. TO CONVERT THE LDP COORDINATES, FOR THE CONTROL POINTS, TO THE OREGON COORDINATE SYSTEM OF 1983(CORS96, EPOCH 2002), NORTH ZONE, MULTIPLY THE LDP COORDINATES BY 0.99980207.

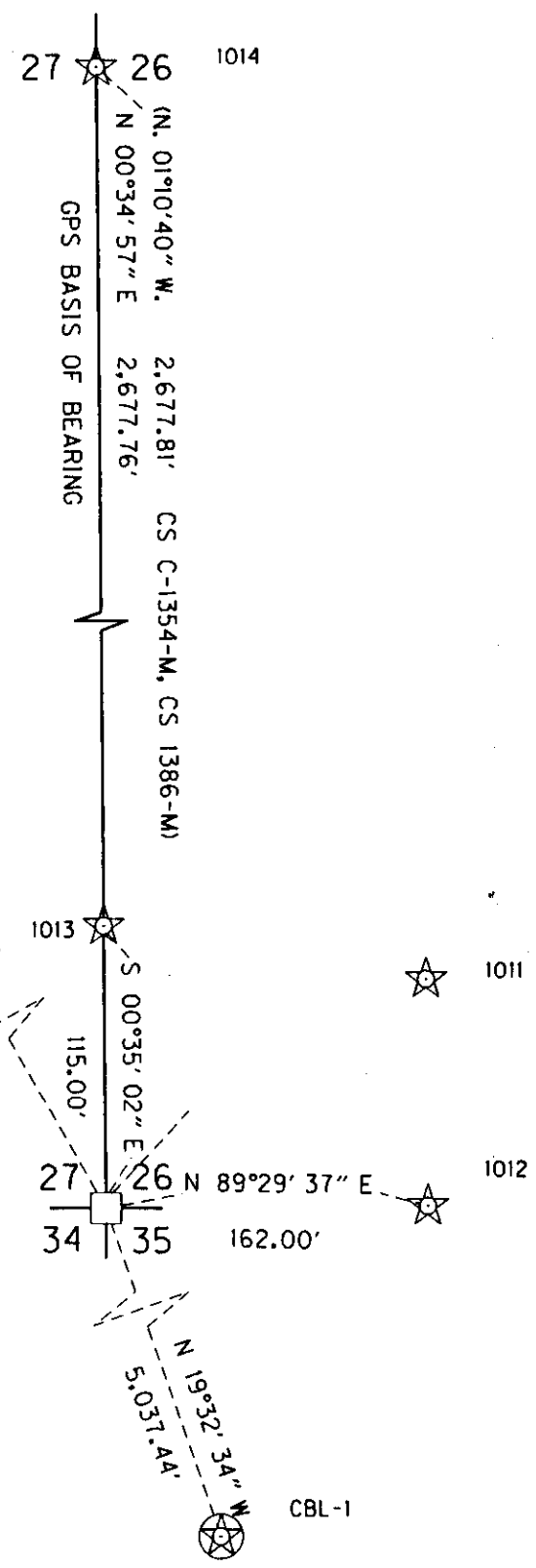
NETWORK DISTANCE AND BEARING TABLE

AT	TO	DISTANCE (FT)	BEARING
SP-1	SP-2	183.79'	S19°27'10"E
SP-1	SP-3	187.91'	S19°15'16"W
SP-1	SP-4	518.65'	S53°10'07"E
SP-1	501	650.40'	S02°25'17"W
SP-2	SP-3	123.24'	S88°05'28"W
SP-2	SP-6	364.74'	N79°29'08"W
SP-2	500	231.98'	S05°59'00"W
SP-2	501	484.70'	S10°32'34"W
SP-3	SP-6	245.82'	N73°17'38"W
SP-3	SP-7	690.42'	S45°49'28"E
SP-3	500	247.29'	S23°35'51"E
SP-3	501	473.67'	S04°10'31"E
SP-4	SP-5	370.48'	S34°46'03"E
SP-5	SP-7	197.98'	S77°22'28"W
SP-5	501	654.79'	S86°58'26"W
SP-7	501	460.77'	N88°55'07"W
500	501	254.13'	N14°42'15"W
1012	1013	198.79'	N55°09'45"W

**LEGEND**

- FOUND MONUMENT USED AS OPUS POINT
- FOUND MONUMENT USED AS GPS POINT
- SET GPS POINT
- CALCULATED POINT
- SET NETWORK POINT
- FOUND MONUMENT USED AS A NETWORK POINT
- LINES OF OBSERVATION
- GPS LINES OF OBSERVATION

SE Cor. Sec. 27  
Calculated from  
References  
N. 617,838.324  
E. 8,446,582.149



REFERENCES

- MT. VERNON ADDITION TO HEPPNER
- MAP OF MT. VERNON ADDITION TO THE TOWN OF HEPPNER
- THE SECOND MT. VERNON ADDITION TO THE CITY OF HEPPNER
- PRESTON LOONEY'S ADDITION TO THE TOWN OF HEPPNER
- MORROW COUNTY RECORD BOOK E, PAGE 591
- MORROW COUNTY RECORD BOOK O, PAGE 459
- MORROW COUNTY RECORD BOOK O, PAGE 462
- MORROW COUNTY SURVEY A-882-K
- MORROW COUNTY SURVEY B-26-K
- MORROW COUNTY SURVEY B-1044-E
- MORROW COUNTY SURVEY C-3-K
- MORROW COUNTY SURVEY C-864-K
- MORROW COUNTY SURVEY C-1338-M
- MORROW COUNTY SURVEY C-1386-M
- MORROW COUNTY SURVEY D-1205-E

**RECEIVED BY**  
Morrow County Surveyor  
Date: 6-27-2013  
Rec'd By: S.K.H.  
No.: 1676 2013-29C  
Folder No.: 1676

NETWORK POINT COORDINATE TABLE

PT. NO.	GRID NORTHING	GRID EASTING	DATE	DESCRIPTION & REFERENCE DOCUMENTS
500	619,660.496	8,4450,68.052	8/03/2011	SET HUB AND TACK
501	619,414.692	8,445,003.547	8/03/2011	SET PK NAIL
CBL-1	613,091.085	8,448,267.232	3/16/2012	FOUND 3/2" BRASS DISK, MARKED "CBL-1, 1980"
1011	617,954.314	8,446,742.955	3/16/2012	FOUND PK NAIL, (CS 1621-C)
1012	617,839.756	8,446,744.143	3/16/2012	FOUND BRASS DISK WC TO SOUTHEAST CORNER OF SECTION 27, (CS 1621-C)
1013	617,953.318	8,446,580.977	3/16/2012	FOUND IRON PIN IN CHURCH ST., (CS 1621-C)
1014	620,515.948	8,446,554.927	3/16/2012	FOUND 2 1/2" DIA. BRASS CAP MARKED "T2S, R26E, S 27, 2 26, 1/4 COR., PLS 933,"
SP1	620,064.512	8,445,031.026	3/25/2011	SET PK NAIL
SP2	619,891.214	8,445,092.233	3/25/2011	SET 12" GALVANIZED NAIL
SP3	619,887.109	8,444,969.059	3/25/2011	SET 12" GALVANIZED NAIL
SP4	619,753.599	8,445,446.159	3/25/2011	SET PK NAIL
SP5	619,449.258	8,445,657.426	3/25/2011	FOUND 2 1/4" DIA. ALUMINIUM CAP STAMPED "ARMY CORP OF ENGINEERS, 09-1010-03, 2009, WLWMI"
SP6	619,957.772	8,444,733.619	3/25/2011	SET 12" GALVANIZED NAIL
SP7	619,405.984	8,445,464.235	3/25/2011	FOUND 5/8" DIA. IRON ROD IN ROAD.

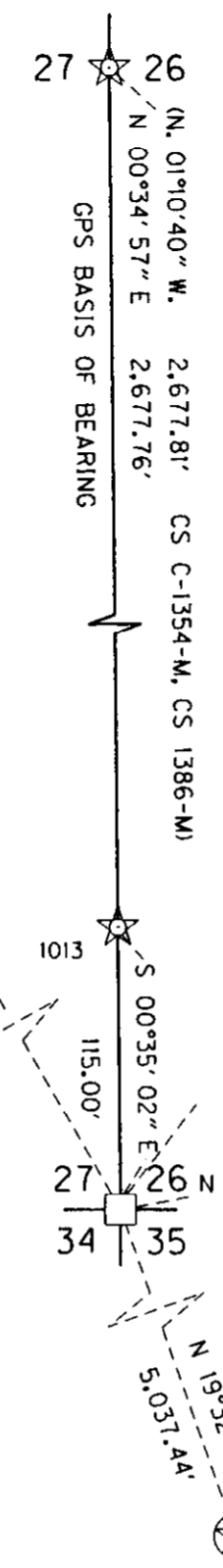
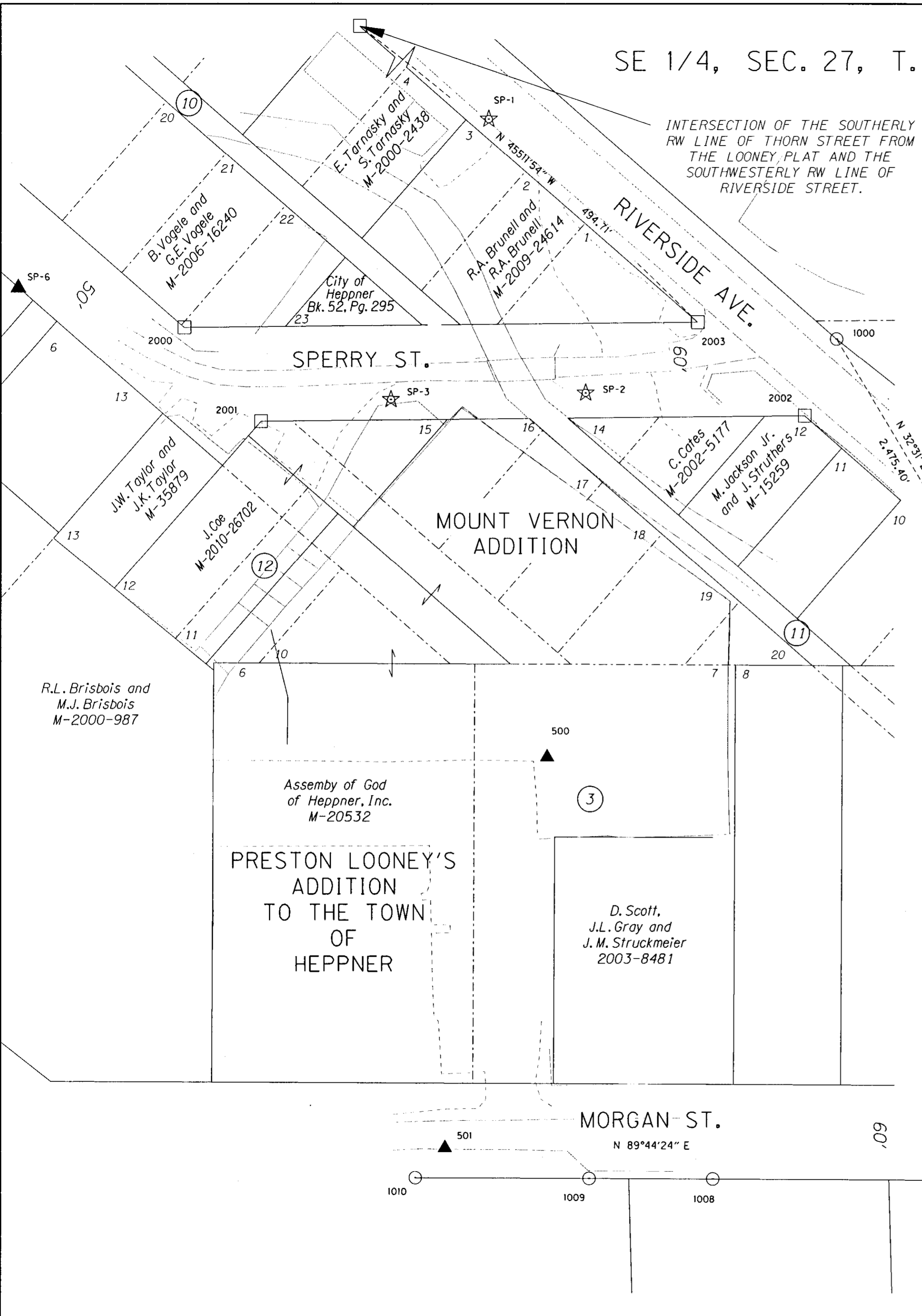
REGISTERED PROFESSIONAL LAND SURVEYOR  
*Robert E. Butler*  
OREGON July 25, 1995  
ROBERT ERICH BUTLER 2733  
EXPIRES: 12/31/2013

OREGON DEPARTMENT OF TRANSPORTATION  
HORIZONTAL CONTROL, RECOVERY AND RETRACEMENT MAP  
CITY OF HEPPNER AT SPERRY STREET  
MORROW COUNTY

ODOT REGION 5  
3012 ISLAND AVE.  
LA GRANDE, OR. 97850-9497

DECEMBER 7, 2012  
NOT TO SCALE  
SHEET 1 OF 3

SE 1/4, SEC. 27, T. 2 S., R. 26 E., W.M.



SET AND RECOVERED MONUMENT LIST

PT. NO.	LDP NORTHING	LDP EASTING	DATE	DESCRIPTION & REFERENCE DOCUMENTS
500	619,660.496	8,445,68.052	8/03/2011	SET HUB AND TACK
501	619,414.692	8,445,003.547	8/03/2011	SET PK NAIL
1000	619,925.530	8,445,251.301	2/07/2012	FOUND 5/8" IRON ROD WITH YELLOW CAP, (CS D-1205-E)
1003	619,391.433	8,445,934.292	2/07/2012	FOUND 5/8" DIA. IRON ROD WITH YELLOW CAP MARKED "848"
1008	619,394.903	8,445,173.051	2/07/2012	FOUND 5/8" DIA. IRON ROD W/ YELLOW CAP MARKED "2850", (CS C-1354-M)
1009	619,395.231	8,445,094.718	2/07/2012	FOUND 5/8" DIA. IRON ROD W/ YELLOW CAP MARKED "2850", (CS C-1354-M)
1010	619,395.714	8,444,984.780	2/07/2012	FOUND 5/8" DIA. IRON ROD W/ YELLOW CAP MARKED "2850", (C-1354-M)
1011	617,954.314	8,446,742.955	3/16/2011	FOUND 'PK' NAIL, (CS 1621-C)
1012	617,839.756	8,446,744.143	3/16/2011	FOUND BRASS CAP WITNESS CORNER, (CS 1621-C)
1013	617,953.318	8,446,580.977	3/16/2012	FOUND 5/8" DIA. IRON PIN, (CS C-1621-C)
SP-1	620,064.512	8,445,31.026	3/25/2011	SET PK NAIL
SP-2	619,891.214	8,445,092.233	3/25/2011	SET 12" GALVANIZED NAIL
SP-3	619,887.109	8,444,969.059	3/25/2011	SET 12" GALVANIZED NAIL
SP-6	619,957.772	8,444,733.619	3/25/2011	SET 12" GALVANIZED NAIL
2000	619,932.790	8,444,838.632	3/25/2011	CALCULATED POINT IN PRESTON ADDITION
2001	619,873.279	8,444,886.991	3/25/2011	CALCULATED POINT IN PRESTON ADDITION
2002	619,876.778	8,445,231.112	3/25/2011	CALCULATED POINT IN PRESTON ADDITION
2003	619,936.090	8,445,163.204	3/25/2011	CALCULATED POINT IN PRESTON ADDITION

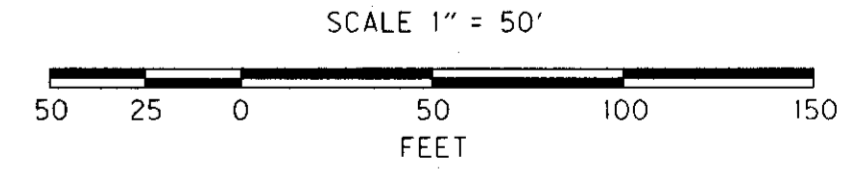
MEASURED / RECORD BEARINGS AND DISTANCES

FROM	TO	DIST. (FT.)	BEARING	RECORD BEARING AND DIST.
1003	1010	949.52	N.89°44'30"W.	
1010	1009	109.94	S.89°44'55"E.	N.89°40'11"E. 110.00' (CS C-1354-M)
1009	1008	78.33	S.89°45'35"E.	N.89°40'11"E. 78.26' (CS C-1354-M)
1008	1003	761.25	S.89°44'20"E.	N.89°40'11"E. 761.33' (CS C-1354-M)
1011	1012	114.56	S.0°35'38"E.	114.58' (CS 1621-C)
1011	1013	161.98	S.89°38'52"W.	161.98' (CS 1621-C)
1012	SE27	162.00	S.89°29'37"W.	162.00' (CS 1621-C)
1013	SE27	115.00	S.0°35'02"E.	115.00' (CS 1621-C)
1012	1013	198.79'	N.55°09'45"W.	

LEGEND

- ☆ FOUND MONUMENT USED AS GPS POINT
- ☆ SET GPS POINT
- ▲ SET NETWORK POINT
- CALCULATED POINT
- FOUND MONUMENT AS NOTED
- EXISTING RIGHT-OF-WAY
- X- FENCE
- - - EDGE PAVEMENT

RECEIVED BY  
 Morrow County Surveyor  
 Date: 6-27-2013  
 Rec'd By: S.K.H.  
 No.: 2013-29C  
 Folder No.: 1676



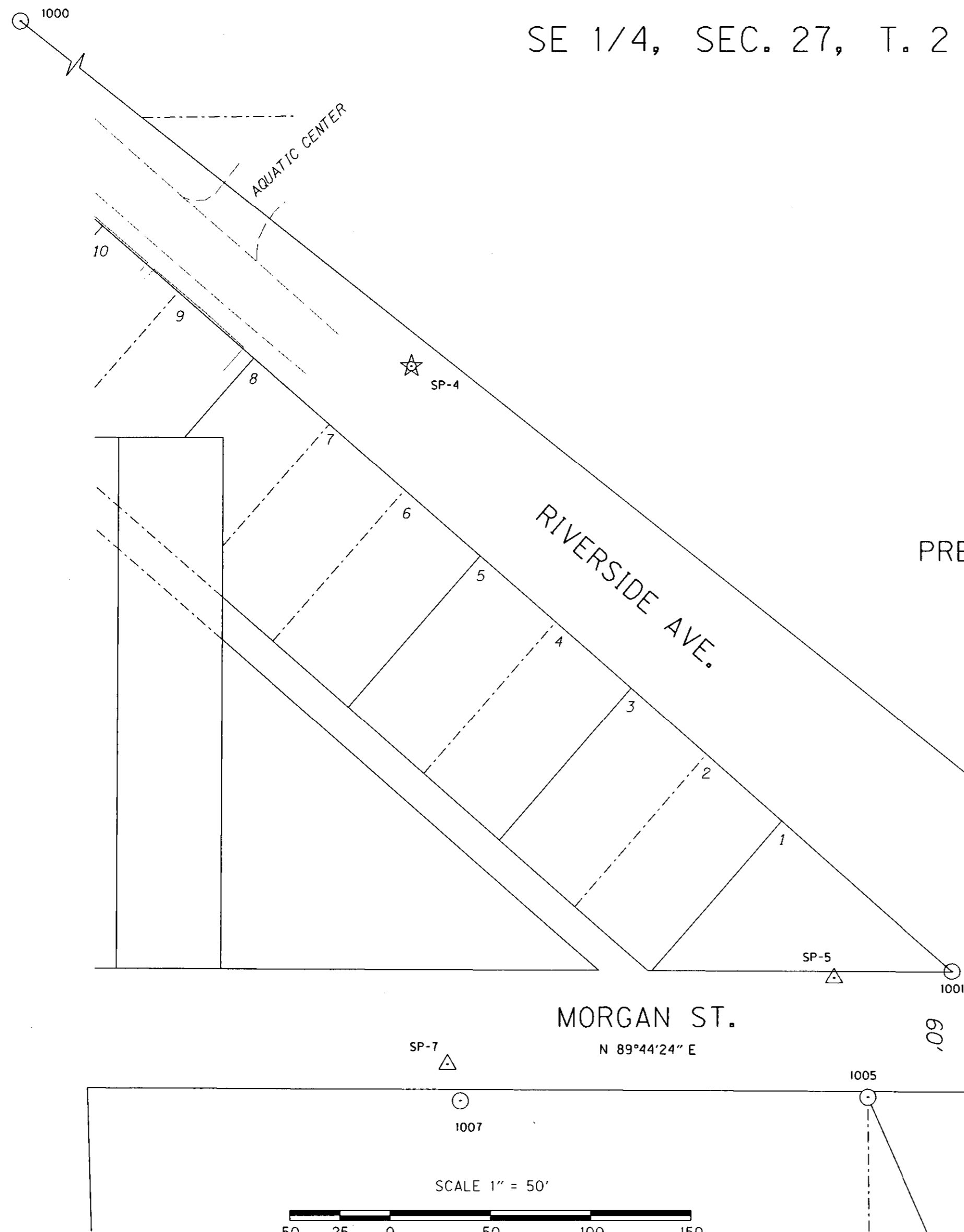
REGISTERED PROFESSIONAL LAND SURVEYOR  
*Robert E. Butler*  
 OREGON  
 July 25, 1995  
 ROBERT ERICH BUTLER  
 2733  
 EXPIRES: 12/31/2013

OREGON DEPARTMENT OF TRANSPORTATION  
 HORIZONTAL CONTROL, RECOVERY AND RETRACEMENT MAP  
 CITY OF HEPPNER AT SPERRY STREET  
 MORROW COUNTY  
 ODOT REGION 5  
 3012 ISLAND AVE.  
 LA GRANDE, OR. 97850-9497  
 DECEMBER 7, 2012  
 SCALE 1" = 50'  
 SHEET 2 OF 3

SE 1/4, SEC. 27, T. 2 S., R. 26 E., W.M.

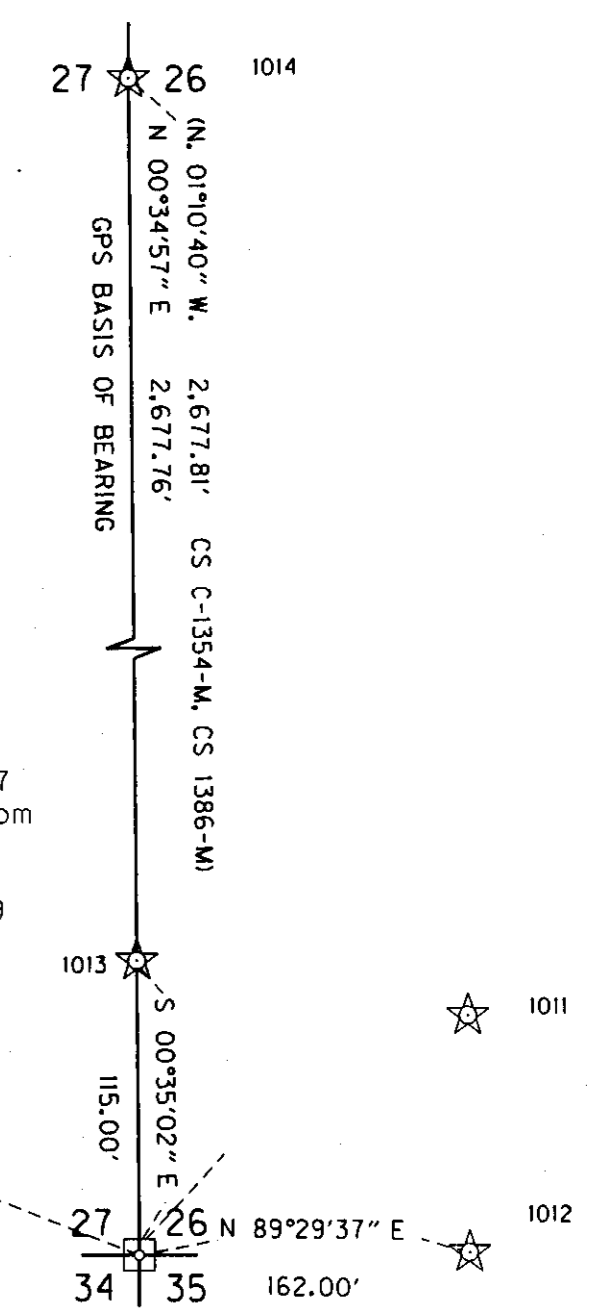
MEASURED / RECORD BEARINGS AND DISTANCES

FROM	TO	DIST. (FT.)	BEARING	RECORD BEARING AND DIST.
1000	1002	780.16	S.51°43'12"E.	S.52°09'55"E. 762.55' (CS D-1205-E); (CS C-1353-M)
1007	1005	203.68	N.89°27'49"E.	N.89°39'00"E. 204.44' (CS C-3-K); (CS B 1044-E); N.89°39'00"E. 204.44' (CS C-1354-M)
1005	1006	155.80	N.89°13'02"E.	N.89°39'00"E. 155.74' (CS C-864-M); N.88°37'17"E. 155.78' (CS C-1354-M)
1006	1003	104.15	S.89°45'18"E.	N.89°39'41"E. 104.15' (CS C-1353-M)
1004	1003	85.42	N.54°35'34"W.	N.55°23'14"W. 85.22' (CS D-1205-E)
1003	1002	86.94	N.54°15'38"W.	N.55°23'14"W. 104.89' (CS C-1338-M)
1002	1001	147.44	N.85°55'33"W.	S.89°43'15"W. 132.07' (CS D-1205-E)
1011	1012	114.56	S.0°35'38"E.	114.58' (CS 1621-C)
1011	1013	161.98	S.89°38'52"W.	161.98' (CS 1621-C)
1012	SE27	162.00	S.89°29'37"W.	162.00' (CS 1621-C)
1013	SE27	115.00	S.0°35'02"E.	115.00' (CS 1621-C)
1012	1013	198.79'	N.55°09'45"W.	



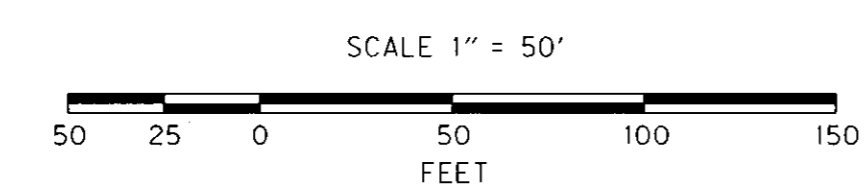
**LEGEND**

- ☆ FOUND MONUMENT USED AS GPS POINT
- ☆ SET GPS POINT
- ▲ SET NETWORK POINT
- △ FOUND MONUMENT USED AS A NETWORK POINT
- FOUND MONUMENT AS NOTED
- CALCULATED POINT
- EXISTING RIGHT-OF-WAY
- X- FENCE
- - - EDGE PAVEMENT



SE Cor. Sec. 27  
Calculated from  
References  
N. 617,838.324  
E. 8,446,582.149

**RECEIVED BY**  
Morrow County Surveyor  
Date: 6-27-2013  
Rec'd By: S.K.H.  
No.: 2013-29C  
Folder No.: 1676



SET AND RECOVERED MONUMENT LIST

PT. NO.	GRID NORTHING	GRID EASTING	DATE	DESCRIPTION & REFERENCE DOCUMENTS
1000	619,925.530	8,445,251.301	2/07/2012	FOUND BENT 5/8" DIA. IRON ROD WITH YELLOW CAP, (CS D-1205-E)
1001	619,452.692	8,445,716.654	2/07/2012	FOUND BENT 5/8" DIA. IRON ROD, (CS D-1205-E)
1002	619,442.217	8,445,863.722	2/07/2012	FOUND BENT 5/8" DIA. IRON ROD, (CS D-1205-E)
1003	619,391.433	8,445,934.292	2/07/2012	FOUND 5/8" IRON ROD WITH YELLOW CAP MARKED "848", (CS D-1205-E)
1004	619,341.941	8,446,003.916	2/07/2012	FOUND 1 1/2" DIA. IRON ROD, INITIAL POINT TO RIVERSIDE ADDITION
1005	619,389.750	8,445,674.363	2/07/2012	FOUND 5/8" DIA. IRON ROD, (CS C-864-K)
1006	619,391.879	8,445,830.146	2/07/2012	FOUND 5/8" DIA. REBAR, (CS C-864-K)
1007	619,387.843	8,445,470.694	2/07/2012	FOUND BENT PIPE, (CS C-3-K)
SP-4	619,753.599	8,445,446.159	3/25/2011	SET PK NAIL
SP-5	619,449.258	8,445,657.426	3/25/2011	FOUND 2 1/4" DIA. ALUMINUM CAP STAMPED "ARMY CORP OF ENGINEERS, 09-T010-03, 2009, WLWMI"
SP-7	619,405.984	8,445,464.235	3/25/2011	FOUND 5/8" DIA. IRON ROD IN ROAD.

REGISTERED PROFESSIONAL LAND SURVEYOR  
*Robert E. Butler*  
OREGON July 25, 1995  
ROBERT ERICH BUTLER 2733  
EXPIRES: 12/31/2013

OREGON DEPARTMENT OF TRANSPORTATION  
HORIZONTAL CONTROL, RECOVERY AND RETRACEMENT MAP  
CITY OF HEPPNER AT SPERRY STREET  
MORROW COUNTY  
ODOT REGION 5  
3012 ISLAND AVE.  
LA GRANDE, OR. 97850-9497  
DECEMBER 7, 2012  
SCALE 1" = 50'  
SHEET 3 OF 3