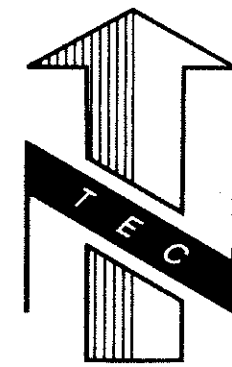


MORROW COUNTY REFERENCES:

- 1) SURVEY FOR FOUR MILE LAND CO. AND G. WILSON BY EDWARDS SURVEYING FILED SEPTEMBER, 2005 C.S. No. 1439-C
- 2) SURVEY FOR FOUR MILE LAND CO. BY EDWARDS SURVEYING FILED SEPTEMBER 2005 C.S. No. 1440-C
- 3) PARTITION PLAT 2004-04 FOR FOUR MILE LAND CO. BY EDWARDS SURVEYING C.S. No. 1412-C
- 4) OREGON STATE HIGHWAY DEPT. HEPPNER HIGHWAY (HWY. 74) HEPPNER JUNCTION-MORGAN SECTION DWG. No. 02B-04-0004 SEPTEMBER, 1923
- 5) SURVEY FOR TILL STONE BY KRUMBEIN ENGINEERING LTD. FILED JUNE 18, 1983 C.S. No. D-618-K
- 6) SURVEY FOR Q-TIP TRUST BY TENNESON ENGINEERING CORP. W.O. #13520 FEBRUARY 2012 C.S. No. 1637-C
- 7) ALTA/ACSM LAND TITLE SURVEY OF WILLOW CREEK WIND FARM FOR INVENERGY, L.L.C. BY ESM CONSULTING ENGINEERS, L.L.C. JUNE 2008 NO MONUMENTATION NOT FILED FOR RECORD
- 8) ALTA/ACSM LAND TITLE SURVEY FOR THE SHEPHERDS FLAT WIND ENERGY PROJECT FOR CAITHNESS SHEPHERDS FLAT, L.L.C. BY TENNESON ENGINEERING CORP. W.O. #13312 DECEMBER 2010 NO MONUMENTATION NOT FILED FOR RECORD
- 9) SURVEY FOR FOSTER A. ODOM FAMILY TRUST BY TENNESON ENGINEERING CORP. W.O. #13521 FEBRUARY 2012 C.S. No. 1638-C



0' 2000' 4000' 8000'
SCALE IN FEET

INDEX:

- SHEET 1: COVER SHEET (KEY MAP, INDEX AND REFERENCES)**
- SHEET 2: SECTIONS 17, 18, 19 AND 20 DETAIL**
- SHEET 3: SECTIONS 15, 16, 21 AND 22 DETAIL**
- SHEET 4: SECTIONS 29, 30, 31 AND 32 DETAIL**
- SHEET 5: SECTIONS 27, 28, 33 AND 34 DETAIL**
- SHEET 6: SECTIONS 5, 6, 7 AND 8 DETAIL**
- SHEET 7: SECTIONS 3, 4, 9, 10 AND DETAILS**
- SHEET 8: SECTIONS 19, 20, 29 AND 30 DETAIL**
- SHEET 9: SECTIONS 21, 22, 27 AND 28 DETAIL**
- SHEET 10: HEPPNER HWY. DETAIL, SECTION 21/28**
- SHEET 11: FOURMILE CANYON CO. ROAD DETAIL**
- SHEET 12: SECTION 15 AND 22 DETAIL**
- SHEET 13: PALMATEER COUNTY ROAD DETAIL**
- SHEET 14: REFERENCES, LAND CORNER DETAILS, CURVE & LINE DATA AND NARRATIVE**

LEGEND:

- PROPERTY OWNERSHIP LINE
 - - - CENTERLINE ROADS
 - COUNTY LINE
 - x x x x x EXISTING FENCE LINE EXISTING
 - (E) 9 10 SET SECTION CORNER, AS NOTED
 - 16 15 9 10 FOUND SECTION CORNER, AS NOTED
 - 16 15 14 13 23 24 CALCULATED SECTION CORNER
 - ⊗ SET 1/4 CORNER, AS NOTED
 - ⊗ FOUND 1/4 CORNER
 - ⊗ CALCULATED 1/4 CORNER
 - ⊙ SET 5/8" x 30" REBAR WITH YELLOW PLASTIC CAP, INSCRIBED "B BESEDA PLS 50800"
 - ⊙ FOUND MONUMENTS, AS NOTED.
 - CALCULATED CORNERS, NOT SET.
 - - - BOTTOM OF DRAINAGE EXISTING TRAIL
 - - - EDGE EXISTING ROAD
- NOTE: ALL OTHERS AS NOTED ON PLAN

NOTES:

- 1) BASIS OF BEARING: BEARINGS SHOWN HEREON ARE BASED ON THE OREGON STATE PLANE COORDINATE SYSTEM, NORTH ZONE GRID, NAD 83(1991) CORS (96) EPOCH 2002 BY GPS OBSERVATION ON THE WEST LINE OF TOWNSHIP 1 NORTH, RANGE 23 EAST, BETWEEN THE NORTHWEST CORNER OF SECTION 6 AND THE WEST 1/4 CORNER OF SECTION 19. USE A THETA ANGLE OF 0°21'20" APPLIED AT THE NORTHWEST CORNER OF SECTION 6, T.1N., R.23E. W.M. TO ROTATE TO TRUE BEARING.
- 2) THE MONUMENTATION SHOWN HEREON WAS COMPLETED ON JANUARY 6, 2012.

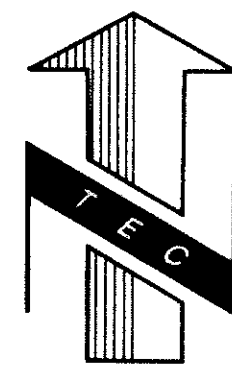
REGISTERED PROFESSIONAL LAND SURVEYOR

OREGON
JULY 13, 1999
BENJAMIN B. BESEDA
50800

EXPIRES: 12/31/2013

RECEIVED BY
Morrow County Surveyor
Date APR 18 2012
Rec'd By SB
No. 1640-C

Date	No.	Revisions	By	App.
SURVEY				
FOR CAITHNESS SHEPHERDS FLAT, LLC OVERALL SITE AND INDEX TOWNSHIP 1 NORTH, RANGE 23 EAST AND TOWNSHIP 2 NORTH, RANGE 23 EAST, W.M. MORROW COUNTY, OREGON				
TENNESON ENGINEERING CORP. CONSULTING ENGINEERS 3313 W. 2nd STREET, SUITE 100 THE DALLES, OREGON 97058 PH. 541-296-9177 FAX 541-296-6657				
Survey	Calculation	Design	Date	Scale
T.E.C.	B.B.B.	B.B.B.	3/30/2012	1"=4000'
Drawn	DWG. No.	Work Order No.	Sheet	
S.D.H.	K:\ACAD\13300\13312\13312_Survey2.dwg	13312	1 of 14	



0' 500' 1000' 2000'
SCALE IN FEET

LEGEND:

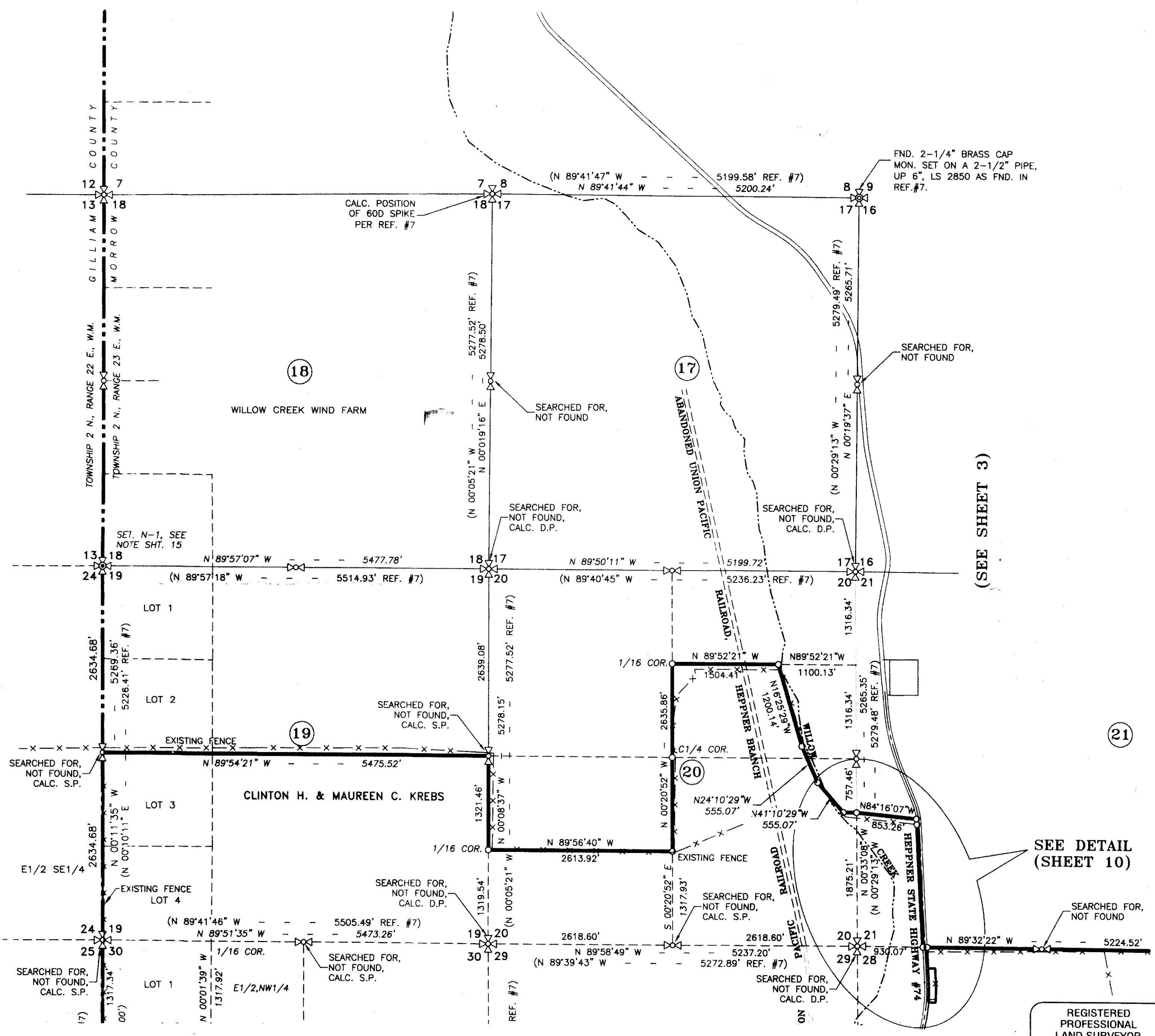
- — — — — PROPERTY OWNERSHIP LINE
 - - - - - CENTERLINE ROADS
 - — — — — COUNTY LINE
 - x - x - x - x - x - x - EXISTING FENCE LINE
 - (E) EXISTING
 - 9 10 SET SECTION CORNER, 5/8" x 30" REBAR WITH 2-1/2" ALUMINUM CAP
 - 16 15 SET 1/4 CORNER, 5/8" x 30" REBAR WITH 2-1/2" ALUMINUM CAP
 - 9 10 FOUND SECTION CORNER, AS NOTED
 - 16 15 FOUND 1/4 CORNER, AS NOTED
 - 14 13 CALCULATED SECTION CORNER
 - 23 24 CALCULATED 1/4 CORNER
 - ⊗ SET 5/8" x 30" REBAR WITH YELLOW PLASTIC CAP, INSCRIBED "B BESEDA PLS 50800"
 - ⊙ FOUND MONUMENTS, AS NOTED.
 - CALCULATED CORNERS, NOT SET.
 - () G.L.O. BEARING AND DISTANCE UNLESS OTHERWISE NOTED
- NOTE: ALL OTHERS AS NOTED ON PLAN

TWP.2N., R.23E., W.M.

6	5	4	3	2	1
7	8	9	10	11	12
18	17	16	15	14	13
19	20	21	22	23	24
30	29	28	27	26	25
31	32	33	34	35	36

INDEX

Date	No.	Revisions	By	App.
SURVEY				
FOR CAITHNESS SHEPHERDS FLAT, LLC				
DETAIL MAP 2N-23-17,18,19 & 20				
SECTIONS 17, 18, 19 AND 20,				
TOWNSHIP 2 N., RANGE 23 E. W.M.				
MORROW COUNTY, OREGON				
TENNESON ENGINEERING CORP.				
CONSULTING ENGINEERS				
3313 W. 2nd STREET, SUITE 100				
THE DALLES, OREGON 97058				
PH. 541-296-9177 FAX 541-293-6657				
Survey	Calculation	Design	Date	Scale
T.E.C.	B.B.B.	B.B.B.	3/29/2012	1"=1000'
Drawn	DWG. No.	Work Order No.	Sheet	
S.D.H.	K:\ACAD\13300\13312\13312_Survey.dwg	13312	2 of 14	



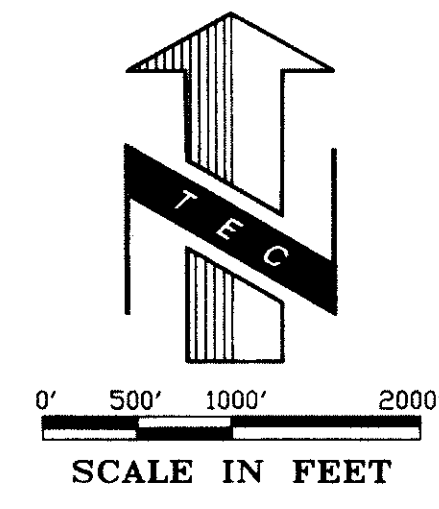
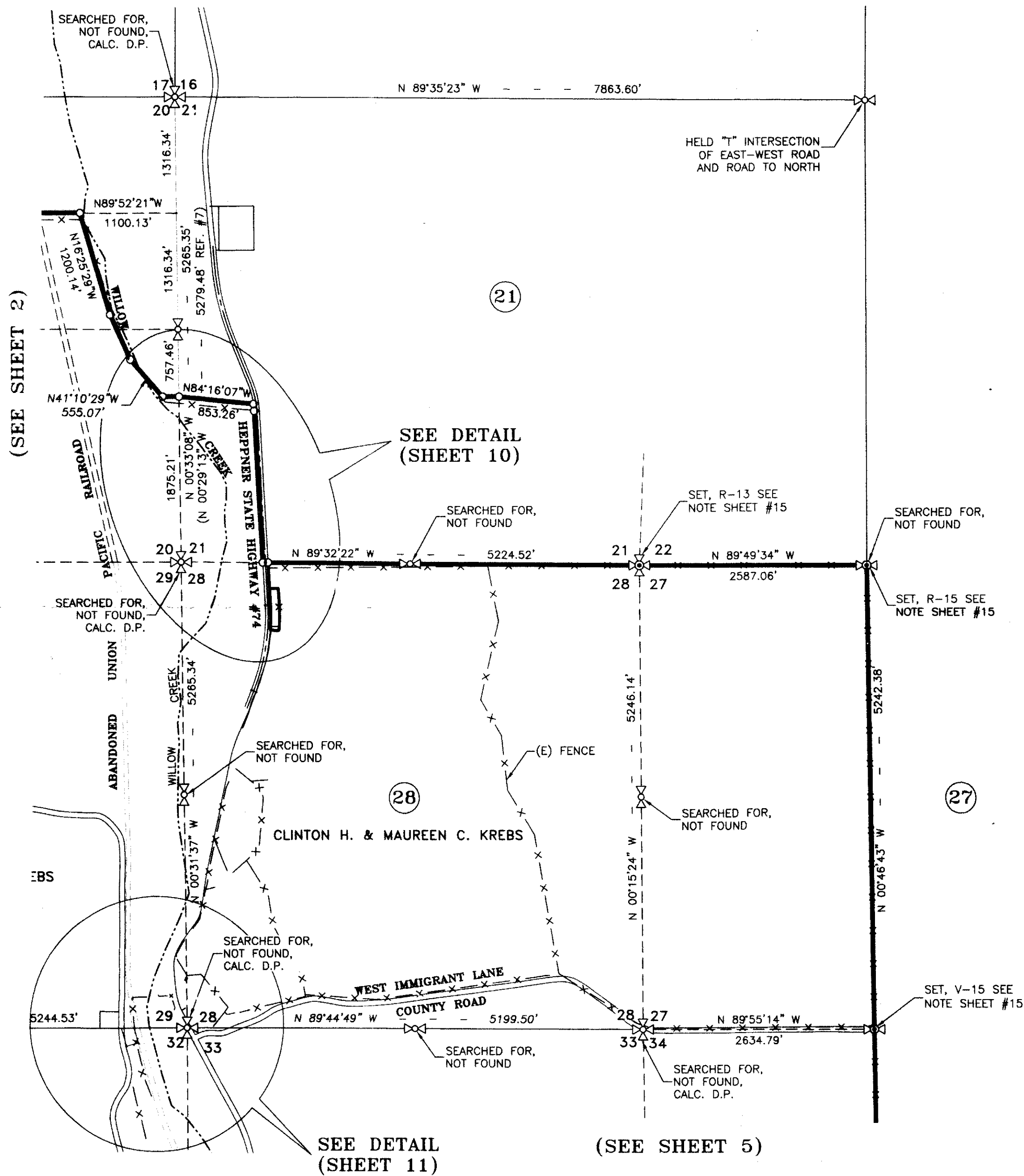
(SEE SHEET 3)

SEE DETAIL (SHEET 10)

(SEE SHEET 4)

RECEIVED BY
Morrow County Surveyor
Date APRIL 18 2012
Rec'd By [Signature]
No. 1670-C

REGISTERED PROFESSIONAL LAND SURVEYOR
[Signature]
OREGON
JULY 13, 1999
BENJAMIN B. BESEDA
50800
EXPIRES: 12/31/2013



- LEGEND:**
- PROPERTY OWNERSHIP LINE
 - CENTERLINE ROADS
 - COUNTY LINE
 - EXISTING FENCE LINE
 - (E) EXISTING
 - SET SECTION CORNER, 5/8" x 30" REBAR WITH 2-1/2" ALUMINUM CAP
 - SET 1/4 CORNER, 5/8" x 30" REBAR WITH 2-1/2" ALUMINUM CAP
 - FOUND SECTION CORNER, AS NOTED
 - FOUND 1/4 CORNER, AS NOTED
 - CALCULATED SECTION CORNER
 - CALCULATED 1/4 CORNER
 - SET 5/8" x 30" REBAR WITH YELLOW PLASTIC CAP, INSCRIBED "B BESEDA PLS 50800"
 - FOUND MONUMENTS, AS NOTED.
 - CALCULATED CORNERS, NOT SET.
 - () G.L.O. BEARING AND DISTANCE UNLESS OTHERWISE NOTED
- NOTE: ALL OTHERS AS NOTED ON PLAN

TWP.2N., R.23E., W.M.

6	5	4	3	2	1
7	8	9	10	11	12
18	17	16	15	14	13
19	20	21	22	23	24
30	29	28	27	26	25
31	32	33	34	35	36

INDEX

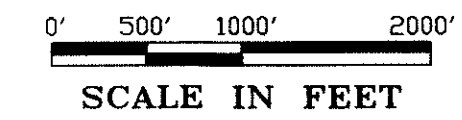
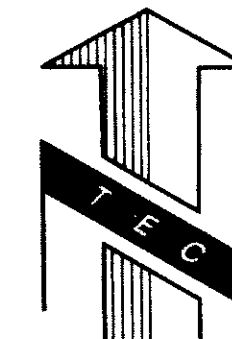
REGISTERED PROFESSIONAL LAND SURVEYOR

OREGON
JULY 13, 1999
BENJAMIN B. BESEDA
50800

EXPIRES: 12/31/2013

Date	No.	Revisions	By	App.
SURVEY				
FOR CAITHNESS SHEPHERDS FLAT, LLC				
DETAIL MAP 2N-23-21,22,27 & 28				
SECTIONS 21, 22, 27 AND 28,				
TOWNSHIP 2 N., RANGE 23 E. W.M.				
MORROW COUNTY, OREGON				
TENNESON ENGINEERING CORP.				
CONSULTING ENGINEERS				
3313 W. 2nd STREET, SUITE 100				
THE DALLES, OREGON 97058				
PH. 541-296-9177 FAX 541-296-6657				
Survey	Calculation	Design	Date	Scale
I.E.C.	B.B.B.	B.B.B.	3/29/2012	1"=1000'
Drawn	DWG. No.	Work Order No.	Sheet	
S.D.H.	K:\ACAD\13300\13312\13312_Survey.dwg	13312	3 of 14	

RECEIVED BY
Morrow County Surveyor
APRIL 18, 2012
Redd By
No. 1640-C



LEGEND:

- PROPERTY OWNERSHIP LINE
 - CENTERLINE ROADS
 - COUNTY LINE
 - EXISTING FENCE LINE
 - EXISTING
 - SET SECTION CORNER, 5/8" x 30" REBAR WITH 2-1/2" ALUMINUM CAP
 - SET 1/4 CORNER, 5/8" x 30" REBAR WITH 2-1/2" ALUMINUM CAP
 - FOUND SECTION CORNER, AS NOTED
 - FOUND 1/4 CORNER, AS NOTED
 - CALCULATED SECTION CORNER
 - CALCULATED 1/4 CORNER
 - SET 5/8" x 30" REBAR WITH YELLOW PLASTIC CAP, INSCRIBED "B BESEDA PLS 50800"
 - FOUND MONUMENTS, AS NOTED.
 - CALCULATED CORNERS, NOT SET.
 - G.L.O. BEARING AND DISTANCE UNLESS OTHERWISE NOTED
- NOTE: ALL OTHERS AS NOTED ON PLAN

TWP.2N., R.23E., W.M.

6	5	4	3	2	1
7	8	9	10	11	12
18	17	16	15	14	13
19	20	21	22	23	24
30	29	28	27	26	25
31	32	33	34	35	36

INDEX

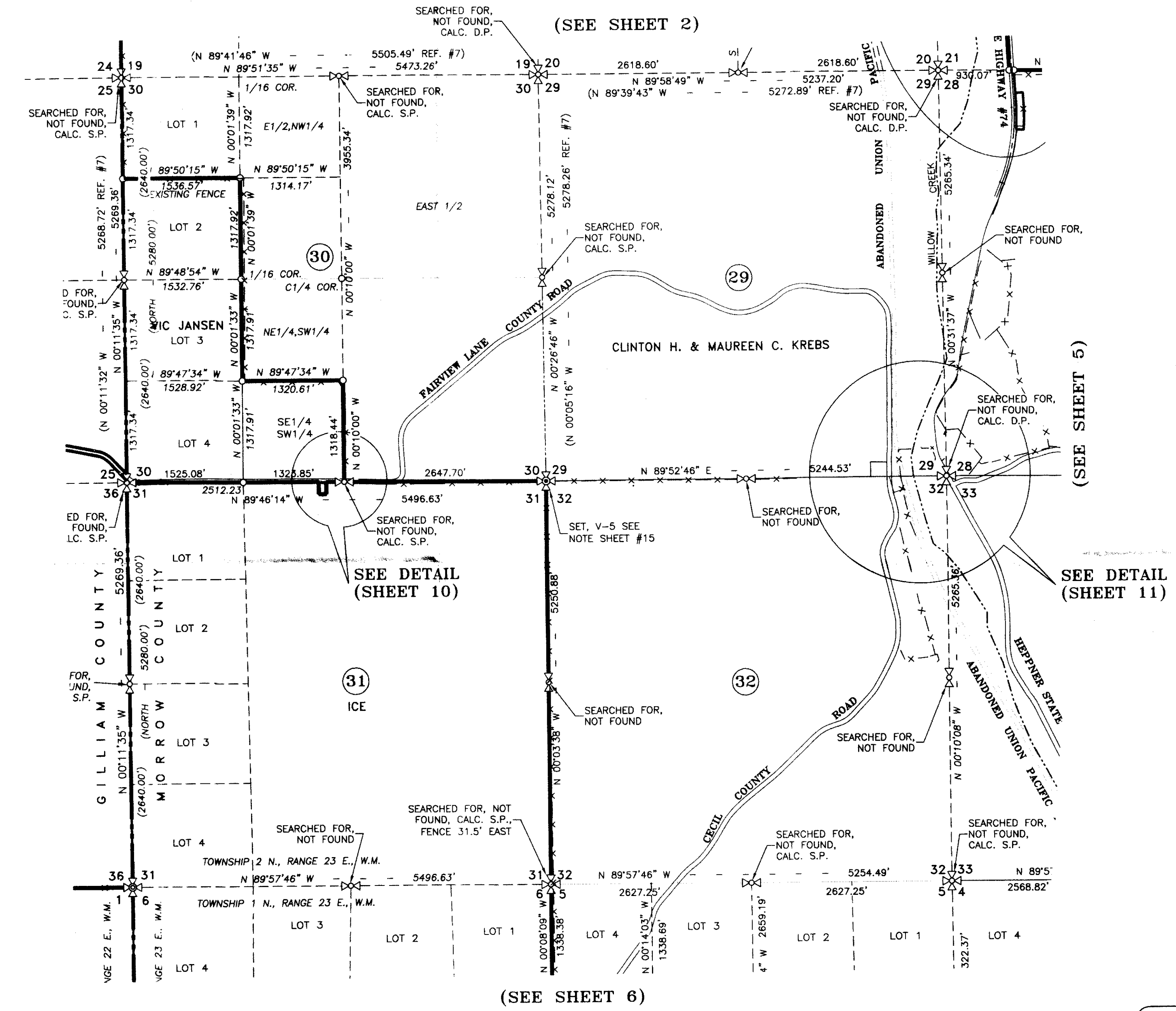
Date	No.	Revisions	By	App.
SURVEY				
FOR CAITHNESS SHEPHERDS FLAT, LLC				
DETAIL MAP 2N-23-29,30,31 & 32				
SECTIONS 29, 30, 31 AND 32,				
TOWNSHIP 2 N., RANGE 23 E. W.M.				
MORROW COUNTY, OREGON				
TENNESON ENGINEERING CORP.				
CONSULTING ENGINEERS				
3313 W. 2nd STREET, SUITE 100				
THE DALLES, OREGON 97058				
PH. 541-296-9177 FAX 541-296-6657				
Survey	Calculation	Design	Date	Scale
T.E.C.	B.B.B.	B.B.B.	3/29/2012	1"=1000'
Drawn	DWG. No.	Work Order No.	Sheet	
S.D.H.	K:\ACAD\13300\13312\13312_Survey.dwg	13312	4 of 14	

REGISTERED PROFESSIONAL LAND SURVEYOR

[Signature]

OREGON
JULY 13, 1999
BENJAMIN B. BESEDA
50800

EXPIRES: 12/31/2013



RECEIVED BY
Morrow County Surveyors
Date APRIL 18 2012
Rec'd By *[Signature]*
No. 1640-C

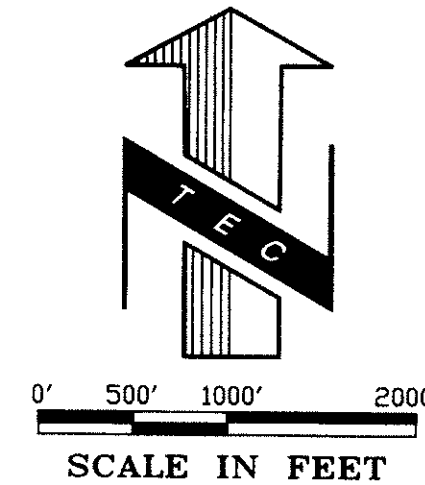
(SEE SHEET 3)

CURVE	DELTA	RADIUS	ARC LENGTH	TANGENT	CHORD BEARING	CHORD LENGTH
C22	27°40'43"	630.08'	304.38'	155.22'	N 04°28'36" W	301.43'
C23	54°19'24"	355.04'	336.62'	182.17'	N 36°31'28" E	324.16'
C24	35°52'00"	420.05'	262.95'	135.94'	N 45°45'10" E	258.68'
C25	14°18'23"	1970.24'	491.95'	247.26'	N 20°39'58" E	490.67'
C63	03°44'14"	5530.66'	360.74'	180.43'	N 15°22'54" E	360.67'
C64	44°18'39"	970.12'	750.26'	395.02'	N 04°54'19" W	731.70'
C65	30°46'24"	670.08'	359.90'	184.40'	N 42°26'50" W	355.59'
C66	10°48'15"	1630.20'	307.40'	154.16'	N 52°25'54" W	306.95'

LEGEND:

- — — — — PROPERTY OWNERSHIP LINE
- — — — — CENTERLINE ROADS
- — — — — COUNTY LINE
- x-x-x-x-x-x-x- EXISTING FENCE LINE
- (E) EXISTING
- 9 10 SET SECTION CORNER, 5/8" x 30" REBAR WITH 2-1/2" ALUMINUM CAP
- 16 15 SET 1/4 CORNER, 5/8" x 30" REBAR WITH 2-1/2" ALUMINUM CAP
- 9 10 FOUND SECTION CORNER, AS NOTED
- 16 15 FOUND 1/4 CORNER, AS NOTED
- 14 13 CALCULATED SECTION CORNER
- 23 24 CALCULATED 1/4 CORNER
- ⊗ SET 5/8" x 30" REBAR WITH YELLOW PLASTIC CAP, INSCRIBED "B BESEDA PLS 5080C"
- ⊙ FOUND MONUMENTS, AS NOTED.
- CALCULATED CORNERS, NOT SET.
- () G.L.O. BEARING AND DISTANCE UNLESS OTHERWISE NOTED

NOTE: ALL OTHERS AS NOTED ON PLAN



SCALE IN FEET

TWP.2N., R.23E., W.M.

19	20	21	22	23	24
30	29	28	27	26	25
31	32	33	34	35	36
6	5	4	3	2	1
7	8	9	10	11	12
18	17	16	15	14	13

TWP.1N., R.23E., W.M.

INDEX

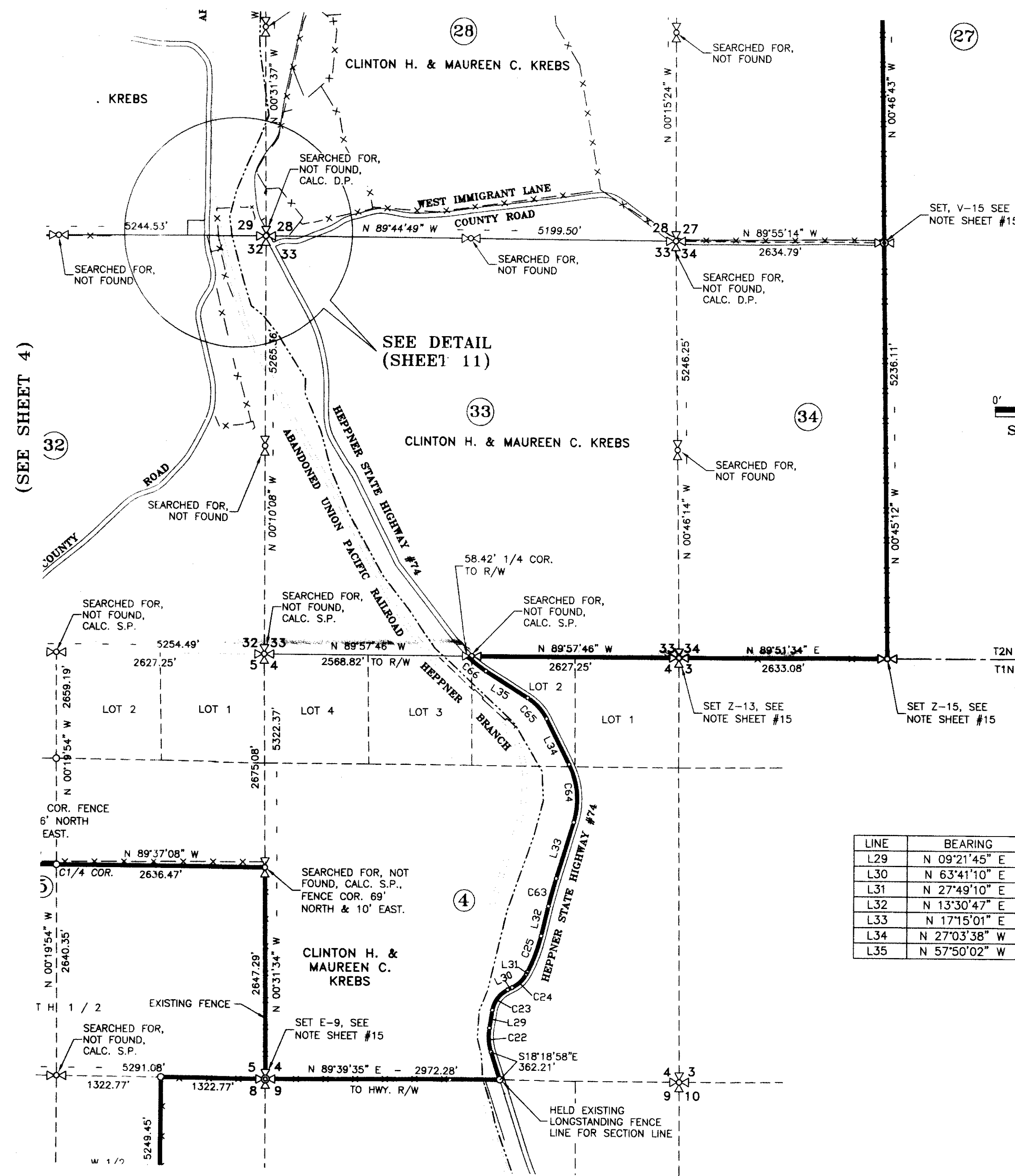
LINE	BEARING	DISTANCE
L29	N 09°21'45" E	227.05'
L30	N 63°41'10" E	61.60'
L31	N 27°49'10" E	9.34'
L32	N 13°30'47" E	383.81'
L33	N 17°15'01" E	733.12'
L34	N 27°03'38" W	634.65'
L35	N 57°50'02" W	627.29'

REGISTERED PROFESSIONAL LAND SURVEYOR

OREGON
JULY 13, 1999
BENJAMIN B. BESEDA
50800

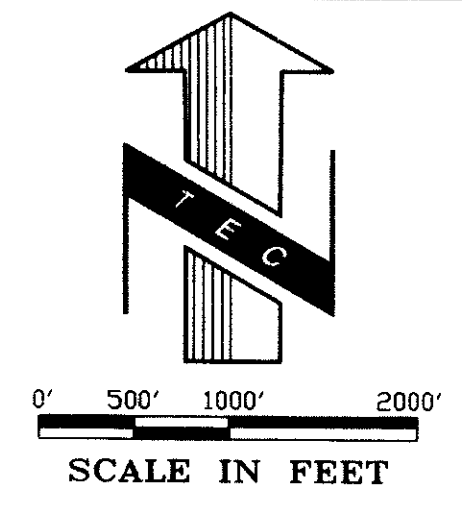
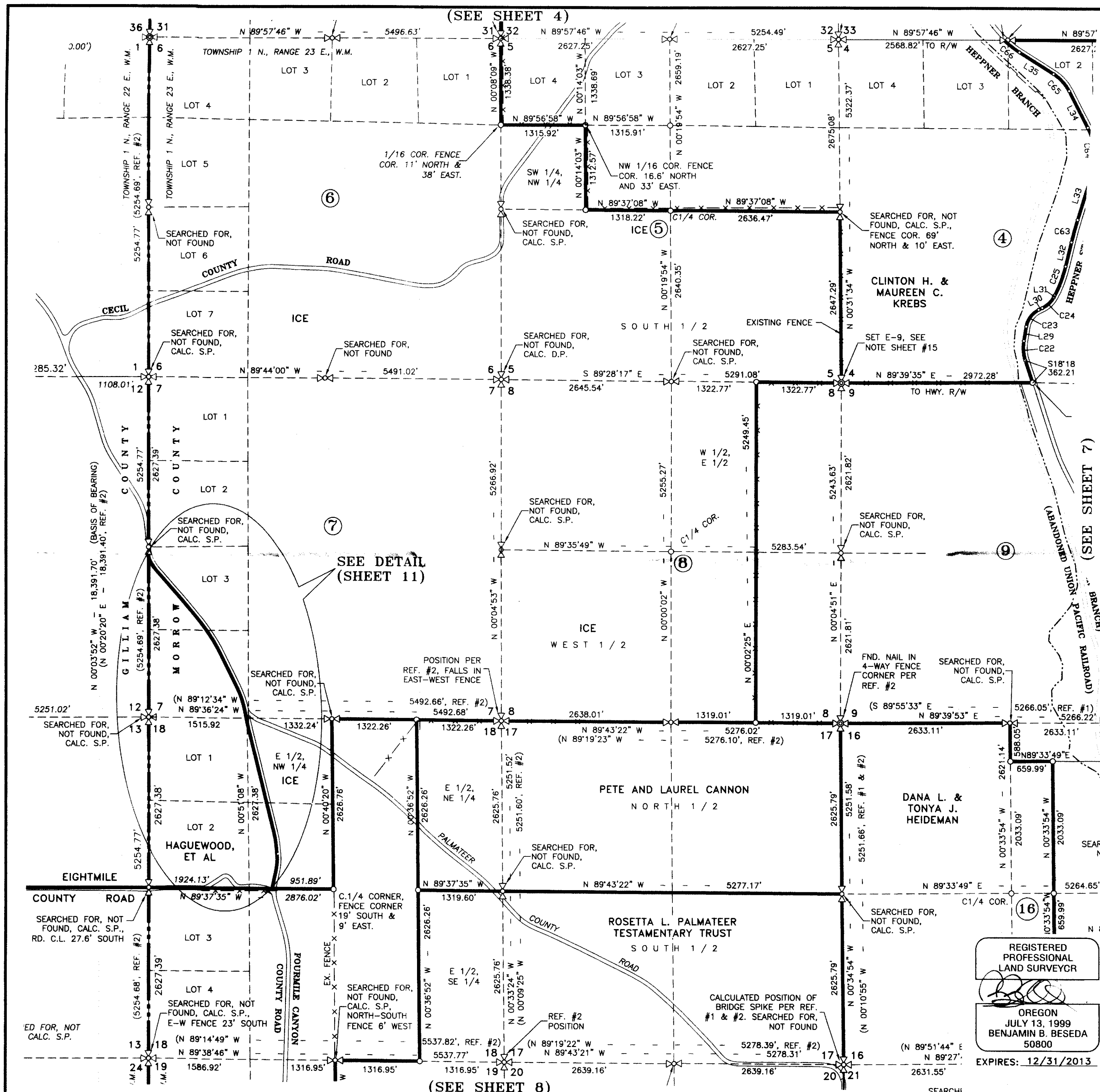
EXPIRES: 12/31/2013

Date	No.	Revisions	By	App.
SURVEY				
FOR CAITHNESS SHEPHERDS FLAT, LLC				
DETAIL MAP 2N-23-27, 28 & 1N-12-3 & 4				
SECTIONS 27 & 28, TWP. 2 N., RANGE 23 E. AND				
SECTIONS 3 & 4, TWP. 1 N., RANGE 23 E., W.M.				
MORROW COUNTY, OREGON				
TENNESON ENGINEERING CORP.				
CONSULTING ENGINEERS				
3313 W. 2nd STREET, SUITE 100				
THE DALLES, OREGON 97058				
PH. 541-296-9177 FAX 541-296-6657				
Survey	Calculation	Design	Date	Scale
T.E.C.	B.B.B.	B.B.B.	3/29/2012	1"=1000'
Drawn	DWG. No.	Work Order No.	Sheet	
S.D.H.	K:\ACAD\13300\13312\13312_Survey.dwg	13312	5 of 14	



(SEE SHEET 7)

RECORDED BY
Morrow County Register
Date APRIL 18 2012
Rec'd By
No. 1640-C



RECEIVED BY
 Morrow County Surveyors
 Date APR 18 2012
 Rec'd By SB
 No. 1640-C

LEGEND:

- PROPERTY OWNERSHIP LINE
 - - - CENTERLINE ROADS
 - COUNTY LINE
 - x - x - x - x - x - x - EXISTING FENCE LINE
 - (E) EXISTING
 - 9 10 SET SECTION CORNER, 5/8" x 30" REBAR WITH 2-1/2" ALUMINUM CAP
 - 16 15 SET 1/4 CORNER, 5/8" x 30" REBAR WITH 2-1/2" ALUMINUM CAP
 - 9 10 FOUND SECTION CORNER, AS NOTED
 - 16 15 FOUND 1/4 CORNER, AS NOTED
 - 14 13 CALCULATED SECTION CORNER
 - 23 24 CALCULATED 1/4 CORNER
 - ⊗ SET 5/8" x 30" REBAR WITH YELLOW PLASTIC CAP, INSCRIBED "B BESEDA PLS 50800"
 - ⊙ FOUND MONUMENTS, AS NOTED.
 - CALCULATED CORNERS, NOT SET.
 - () G.L.O. BEARING AND DISTANCE UNLESS OTHERWISE NOTED
- NOTE: ALL OTHERS AS NOTED ON PLAN

TWP.1N., R.23E., W.M.

6	5	4	3	2	1
7	8	9	10	11	12
18	17	16	15	14	13
19	20	21	22	23	24
30	29	28	27	26	25
31	32	33	34	35	36

INDEX

Date	No.	Revisions	By	App.
SURVEY				
FOR CAITHNESS SHEPHERDS FLAT, LLC				
DETAIL MAP 1N-23-5, 6, 7, 8, 17 & 18				
SECTIONS 5, 6, 7, 8, 17 AND 18,				
TOWNSHIP 1 N., RANGE 23 E. W.M.				
MORROW COUNTY, OREGON				
TENNESON ENGINEERING CORP.				
CONSULTING ENGINEERS				
3313 W. 2nd STREET, SUITE 100				
THE DALLES, OREGON 97058				
PH. 541-296-9177 FAX 541-296-6657				
Survey	Calculation	Design	Date	Scale
T.E.C.	B.B.B.	B.B.B.	3/29/2012	1"=1000'
Drawn	DWG. No.	Work Order No.	Sheet	
S.D.H.	K:\ACAD\13300\13312\13312_Survey.dwg	13312	6 of 14	

REGISTERED PROFESSIONAL LAND SURVEYOR

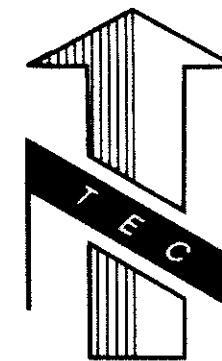
[Signature]

OREGON
 JULY 13, 1999
 BENJAMIN B. BESEDA
 50800

EXPIRES: 12/31/2013

(SEE SHEET 8)

(SEE SHEET 7)



0' 500' 1000' 2000'
SCALE IN FEET

LEGEND :

- PROPERTY OWNERSHIP LINE
- CENTERLINE ROADS
- COUNTY LINE
- EXISTING FENCE LINE
- (E) EXISTING

- SET SECTION CORNER, 5/8" x 30" REBAR WITH 2-1/2" ALUMINUM CAP
- SET 1/4 CORNER, 5/8" x 30" REBAR WITH 2-1/2" ALUMINUM CAP
- FOUND SECTION CORNER, AS NOTED
- FOUND 1/4 CORNER, AS NOTED
- CALCULATED SECTION CORNER
- CALCULATED 1/4 CORNER
- SET 5/8" x 30" REBAR WITH YELLOW PLASTIC CAP, INSCRIBED "B BESEDA PLS 50800"
- FOUND MONUMENTS, AS NOTED.
- CALCULATED CORNERS, NOT SET.
- () G.L.O. BEARING AND DISTANCE UNLESS OTHERWISE NOTED

NOTE : ALL OTHERS AS NOTED ON PLAN

TWP.1N., R.23E., W.M.

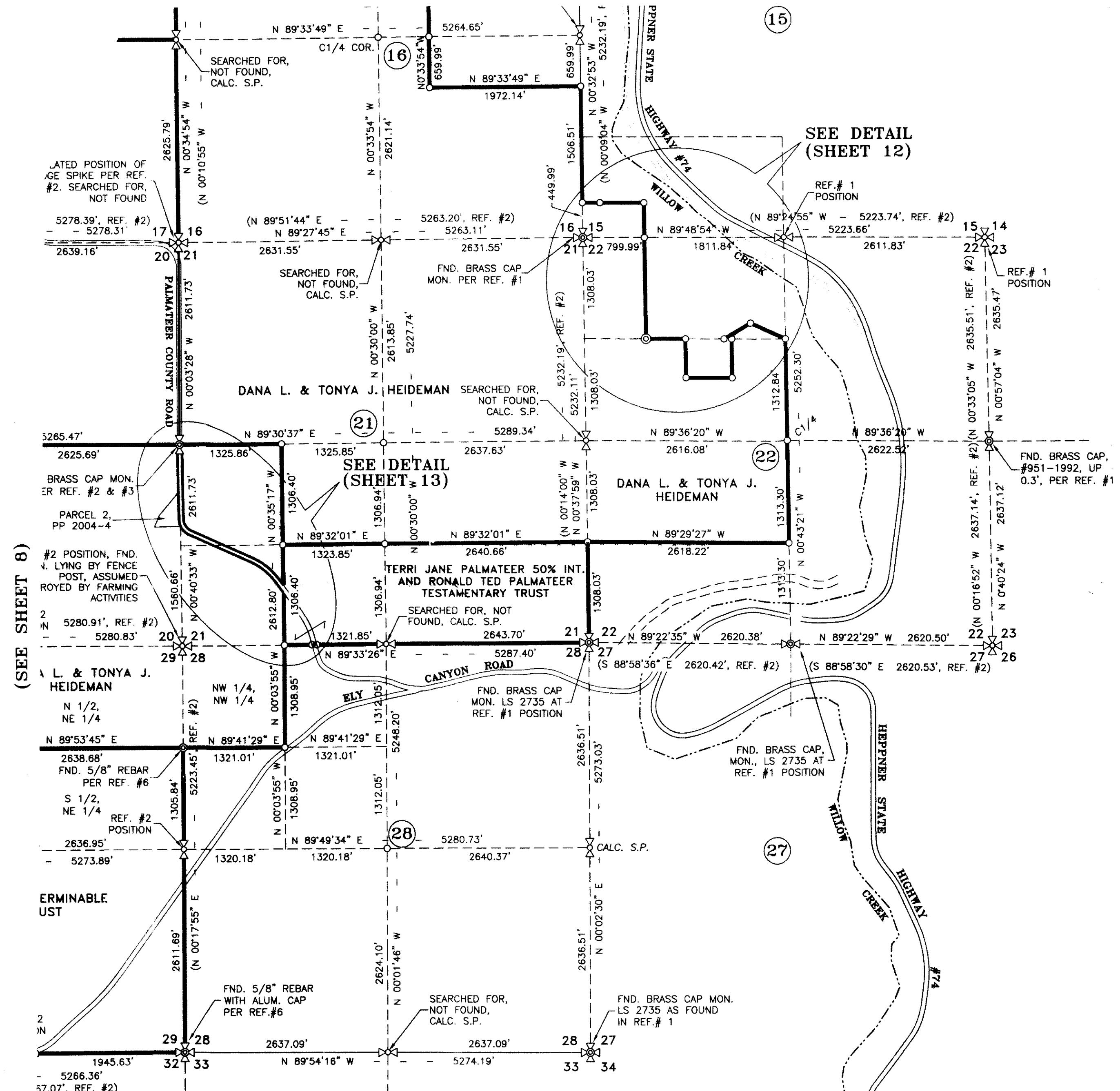
6	5	4	3	2	1
7	8	9	10	11	12
18	17	16	15	14	13
19	20	21	22	23	24
30	29	28	27	26	25
31	32	33	34	35	36

INDEX

Date	No.	Revisions	By	App.
SURVEY				
FOR CAITHNESS SHEPHERDS FLAT, LLC				
DETAIL MAP 1N-23-21, 22, 27 & 28				
SECTIONS 21, 22, 27 AND 28,				
TOWNSHIP 1 N., RANGE 23 E. W.M.				
MORROW COUNTY, OREGON				
TENNESON ENGINEERING CORP.				
CONSULTING ENGINEERS				
3313 W. 2nd STREET, SUITE 100				
THE DALLES, OREGON 97058				
PH. 541-296-9177 FAX 541-296-6657				
Survey	Calculation	Design	Date	Scale
T.E.C.	B.B.B.	B.B.B.	3/29/2012	1"=1000'
Drawn	DWG. No.	Work Order No.	Sheet	
S.D.H.	K:\ACAD\13300\13312\13312_Survey.dwg	13312	9 of 14	

REGISTERED PROFESSIONAL LAND SURVEYOR
[Signature]
OREGON
JULY 13, 1999
BENJAMIN B. BESEDA
50800

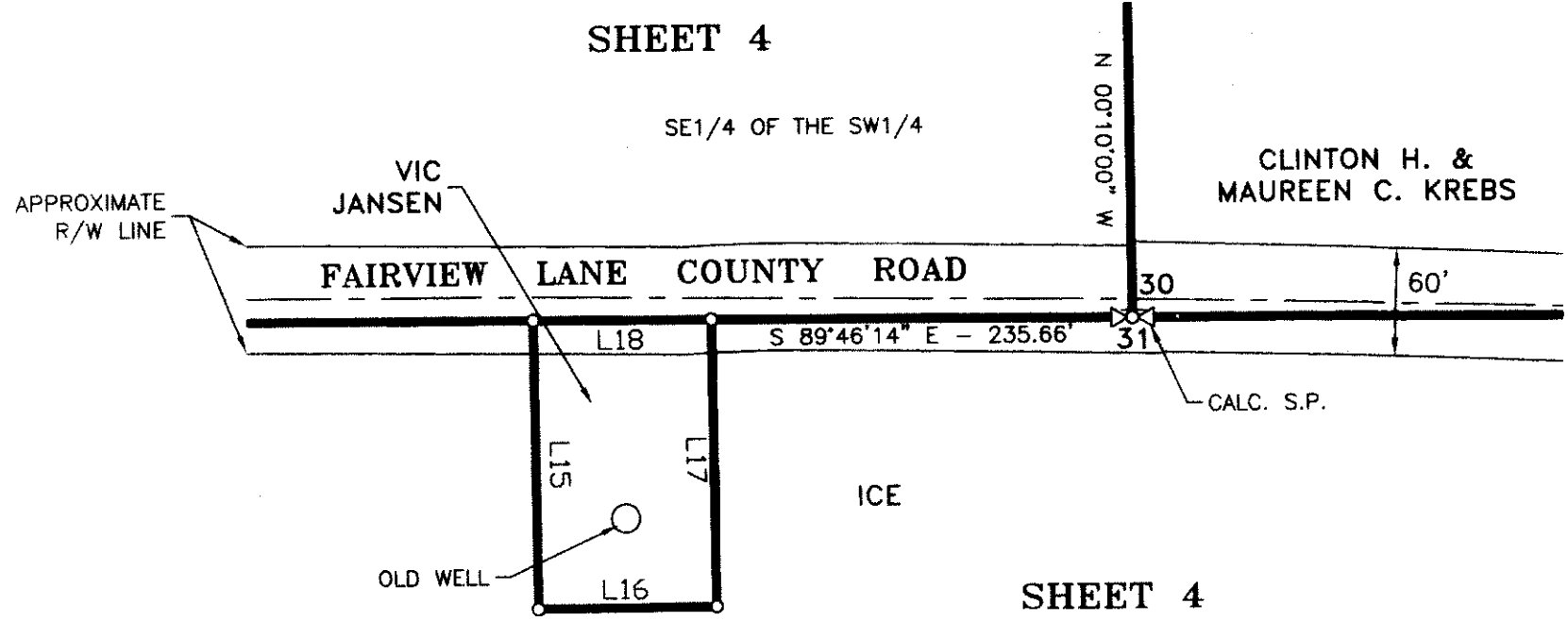
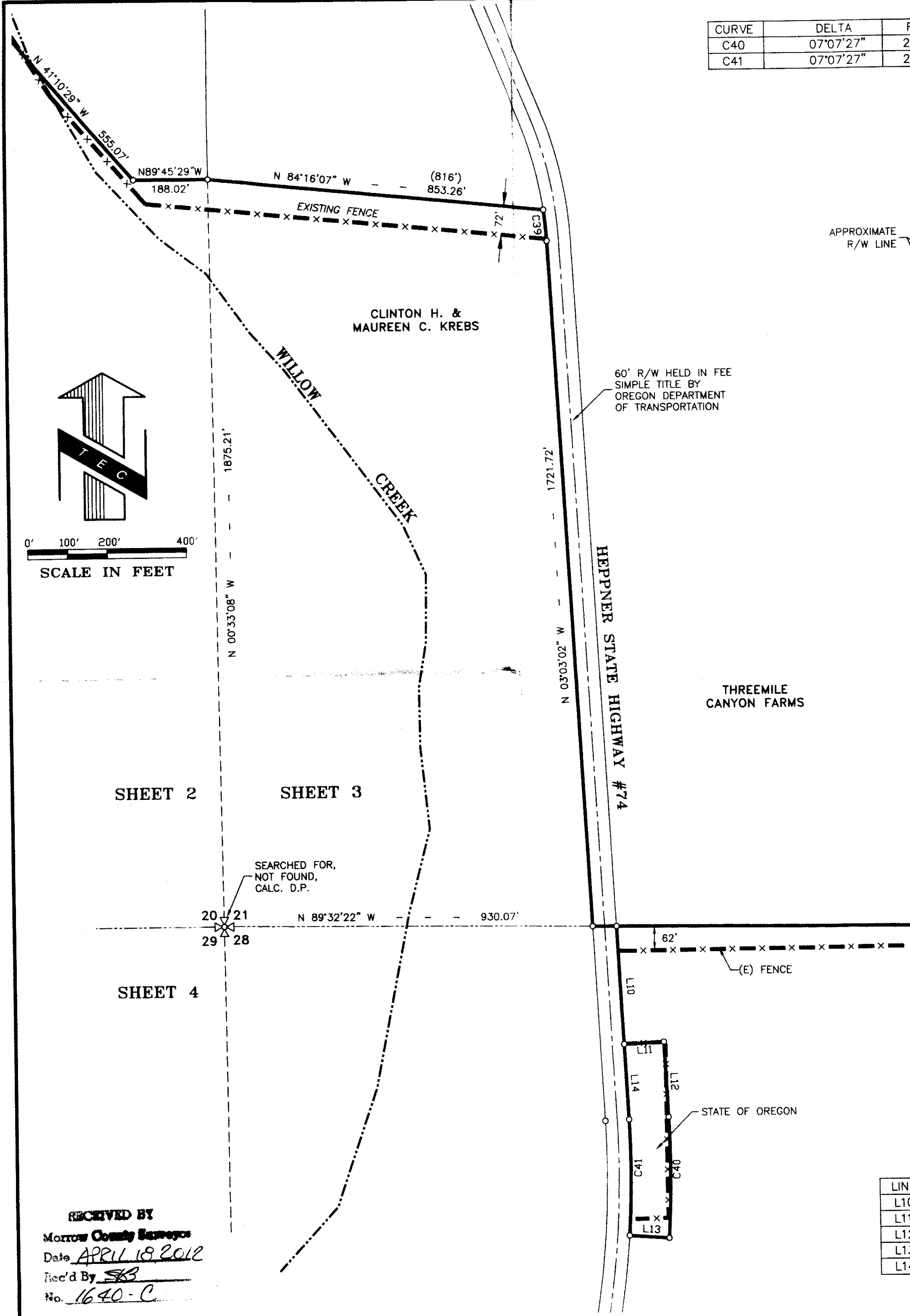
EXPIRES: 12/31/2013



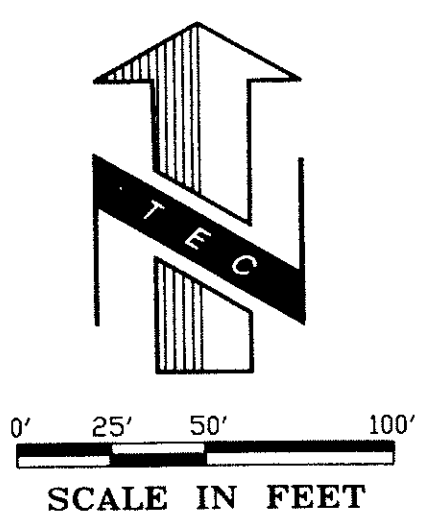
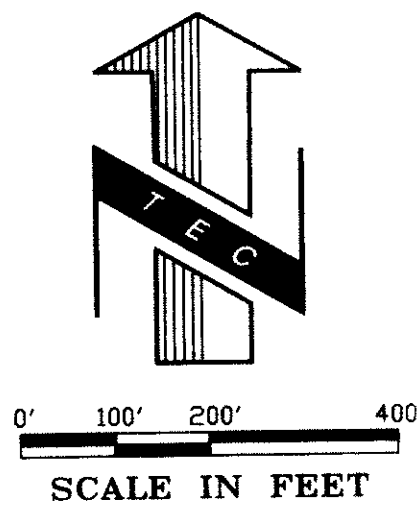
(SEE SHEET 8)

RECEIVED BY
Morrow County Surveyor
Date APR 18 2012
Rec'd By *[Signature]*
No. 1640-C

CURVE	DELTA	RADIUS	ARC LENGTH	TANGENT	CHORD BEARING	CHORD LENGTH
C40	07°07'27"	2422.12'	301.17'	150.78'	N 00°30'42" E	300.98'
C41	07°07'27"	2322.12'	288.73'	144.55'	N 00°30'42" E	288.55'



TAX LOT 2N-23 3501 DETAIL



LINE	BEARING	DISTANCE
L15	N 00°20'16" W	163.44'
L16	S 89°39'44" W	100.01'
L17	S 00°20'16" E	162.45'
L18	S 89°46'14" E	100.02'

LEGEND :

- PROPERTY OWNERSHIP LINE
- CENTERLINE ROADS
- COUNTY LINE
- x-x-x-x-x-x-x- EXISTING FENCE LINE EXISTING
- (E)
- 9 10 SET SECTION CORNER, 5/8" x 30" REBAR WITH 2-1/2" ALUMINUM CAP
- 16 15 SET 1/4 CORNER, 5/8" x 30" REBAR WITH 2-1/2" ALUMINUM CAP
- 9 10 FOUND SECTION CORNER, AS NOTED
- 16 15 FOUND 1/4 CORNER, AS NOTED
- 14 13 CALCULATED SECTION CORNER
- 23 24 CALCULATED 1/4 CORNER
- ⊗ SET 5/8" x 30" REBAR WITH YELLOW PLASTIC CAP, INSCRIBED "B BESEDA PLS 50800"
- ⊙ FOUND MONUMENTS, AS NOTED.
- CALCULATED CORNERS, NOT SET.
- () G.L.O. BEARING AND DISTANCE UNLESS OTHERWISE NOTED

NOTE : ALL OTHERS AS NOTED ON PLAN

LINE	BEARING	DISTANCE
L10	S 03°03'02" E	295.57'
L11	N 86°56'58" E	100.01'
L12	S 03°03'02" E	187.49'
L13	N 85°55'35" W	100.01'
L14	N 03°03'02" W	187.49'

REGISTERED PROFESSIONAL LAND SURVEYOR

OREGON
JULY 13, 1999
BENJAMIN B. BESEDA
50800

EXPIRES: 12/31/2013

TWP.2N., R.23E., W.M.

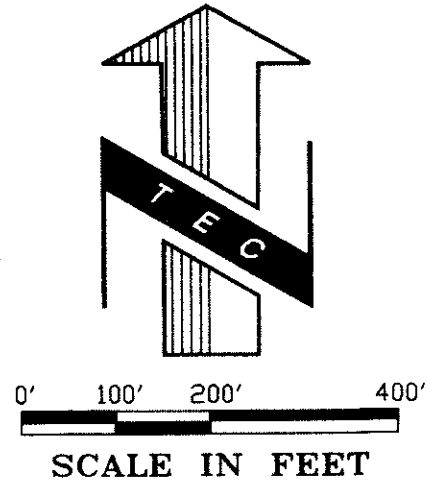
6	5	4	3	2	1
7	8	9	10	11	12
18	17	16	15	14	13
19	20	21	22	23	24
30	29	28	27	26	25
31	32	33	34	35	36

INDEX

Date	No.	Revisions	By	App.
SURVEY				
FOR CAITHNESS SHEPHERDS FLAT, LLC				
DETAIL MAP 2N-23-20,21 AND 28				
SECTIONS 20, 21 AND 28,				
TOWNSHIP 2 N., RANGE 23 E. W.M.				
MORROW COUNTY, OREGON				
TENNESON ENGINEERING CORP.				
CONSULTING ENGINEERS				
3313 W. 2nd STREET, SUITE 100				
THE DALLES, OREGON 97058				
PH. 541-296-9177 FAX 541-296-6657				
Survey	Calculation	Design	Date	Scale
I.E.C.	B.B.B.	B.B.B.	3/29/2012	1"=200'
Drawn	DWG. No.	Work Order No.	Sheet	
S.D.H.	K:\ACAD\13300\13312\13312_Survey.dwg	13312	10 of 14	

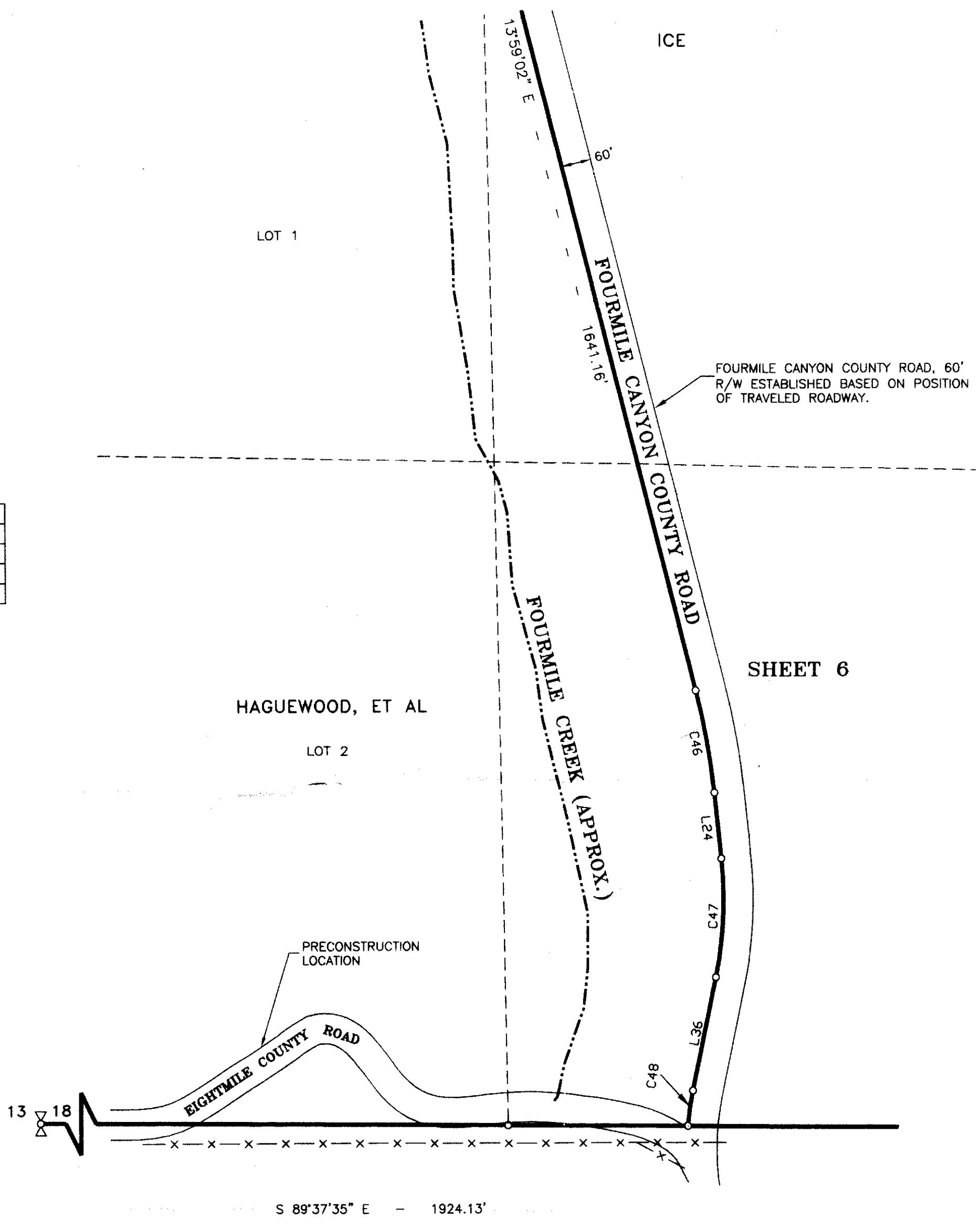
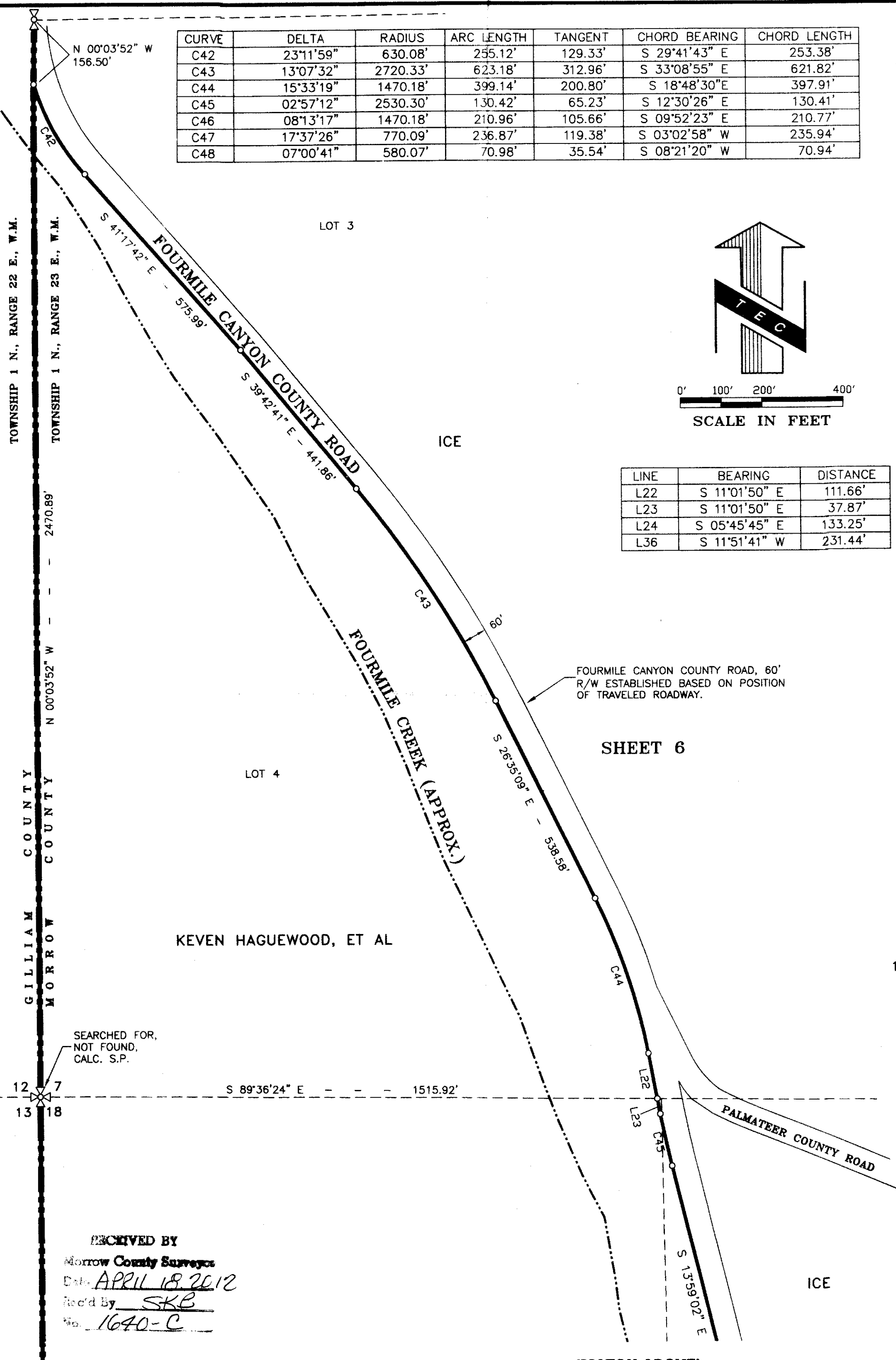
RECEIVED BY
Morrow County Surveyors
Date APRIL 18, 2012
Rec'd By SB
No. 1640-C

CURVE	DELTA	RADIUS	ARC LENGTH	TANGENT	CHORD BEARING	CHORD LENGTH
C42	23°11'59"	630.08'	255.12'	129.33'	S 29°41'43" E	253.38'
C43	13°07'32"	2720.33'	623.18'	312.96'	S 33°08'55" E	621.82'
C44	15°33'19"	1470.18'	399.14'	200.80'	S 18°48'30" E	397.91'
C45	02°57'12"	2530.30'	130.42'	65.23'	S 12°30'26" E	130.41'
C46	08°13'17"	1470.18'	210.96'	105.66'	S 09°52'23" E	210.77'
C47	17°37'26"	770.09'	236.87'	119.38'	S 03°02'58" W	235.94'
C48	07°00'41"	580.07'	70.98'	35.54'	S 08°21'20" W	70.94'



LINE	BEARING	DISTANCE
L22	S 11°01'50" E	111.66'
L23	S 11°01'50" E	37.87'
L24	S 05°45'45" E	133.25'
L36	S 11°51'41" W	231.44'

(MATCH BELOW)



SEARCHED FOR,
NOT FOUND,
CALC. S.P.

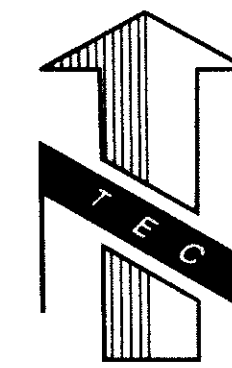
RECEIVED BY
Morrow County Surveyors
Date: APRIL 18, 2012
Rec'd by: SKB
No. 1640-C

REGISTERED
PROFESSIONAL
LAND SURVEYOR

OREGON
JULY 13, 1999
BENJAMIN B. BESEDA
50800
EXPIRES: 12/31/2013

Date	No.	Revisions	By	App.
SURVEY FOR CAITHNESS SHEPHERDS FLAT, LLC DETAIL MAP 1N-23-7 AND 18 SECTIONS 7 AND 18, TOWNSHIP 1 N., RANGE 23 E. W.M. MORROW COUNTY, OREGON				
TENNESON ENGINEERING CORP. CONSULTING ENGINEERS 3313 W. 2nd STREET, SUITE 100 THE DALLES, OREGON 97058 PH. 541-296-9177 FAX 541-296-6657				
Survey	Calculation	Design	Date	Scale
T.E.C.	B.B.B.	B.B.B.	3/29/2012	1"=200'
Drawn	DWG. No.	Work Order No.	Sheet	
S.D.H.	K:\ACAD\13300\13312\13312_Survey.dwg	13312	11 of 14	

(MATCH ABOVE)



0' 100' 200' 400'
SCALE IN FEET

LEGEND :

- PROPERTY OWNERSHIP LINE
- - - CENTERLINE ROADS
- · - · - COUNTY LINE
- x - x - x - x - x - x - EXISTING FENCE LINE
- (E) EXISTING
- 9 10 SET SECTION CORNER, 5/8" x 30" REBAR WITH 2-1/2" ALUMINUM CAP
- 16 15 SET 1/4 CORNER, 5/8" x 30" REBAR WITH 2-1/2" ALUMINUM CAP
- 9 10 FOUND SECTION CORNER, AS NOTED
- 16 15 FOUND 1/4 CORNER, AS NOTED
- 14 13 CALCULATED SECTION CORNER
- 23 24 CALCULATED 1/4 CORNER
- ⊗ SET 5/8" x 30" REBAR WITH YELLOW PLASTIC CAP, INSCRIBED "B BESEDA PLS 50800"
- ⊙ FOUND MONUMENTS, AS NOTED.
- CALCULATED CORNERS, NOT SET.
- () G.L.O. BEARING AND DISTANCE UNLESS OTHERWISE NOTED

NOTE : ALL OTHERS AS NOTED ON PLAN

TWP.1N., R.23E., W.M.

6	5	4	3	2	1
7	8	9	10	11	12
18	17	16	15	14	13
19	20	21	22	23	24
30	29	28	27	26	25
31	32	33	34	35	36

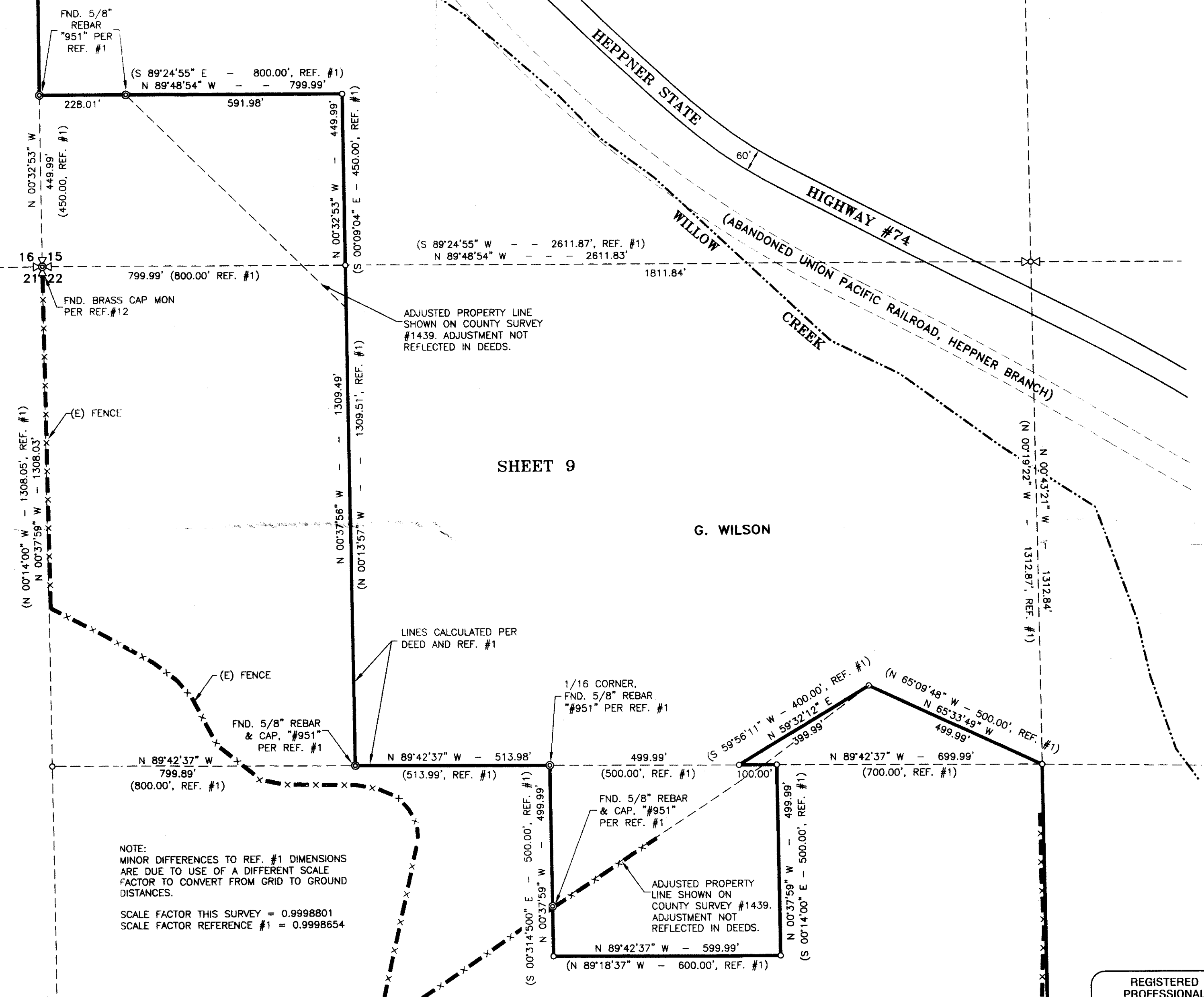
INDEX

Date	No.	Revisions	By	App.
SURVEY				
FOR CAITHNESS SHEPHERDS FLAT, LLC				
DETAIL MAP 1N-23-15 AND 22				
SECTIONS 15 AND 22,				
TOWNSHIP 1 N., RANGE 23 E. W.M.				
MORROW COUNTY, OREGON				
TENNESON ENGINEERING CORP.				
CONSULTING ENGINEERS				
3313 W. 2nd STREET, SUITE 100				
THE DALLES, OREGON 97058				
PH. 541-296-9177 FAX 541-296-6657				
Survey	Calculation	Design	Date	Scale
T.E.C.	B.B.B.	B.B.B.	3/29/2012	1"=200'
Drawn	DWG. No.	Work Order No.	Sheet	
S.D.H.	K:\ACAD\13300\13312\13312_Survey.dwg	13312	12 of 14	

REGISTERED
PROFESSIONAL
LAND SURVEYOR

OREGON
JULY 13, 1999
BENJAMIN B. BESEDA
50800

EXPIRES: 12/31/2013



NOTE:
MINOR DIFFERENCES TO REF. #1 DIMENSIONS
ARE DUE TO USE OF A DIFFERENT SCALE
FACTOR TO CONVERT FROM GRID TO GROUND
DISTANCES.

SCALE FACTOR THIS SURVEY = 0.9998801
SCALE FACTOR REFERENCE #1 = 0.9998654

RECEIVED BY
Morrow County Surveyor
Date APR 18, 2012
Rec'd By SKP
No. 1640-C

DANA L. & TONYA J. HEIDEMAN

DANA L. & TONYA J. HEIDEMAN

N 89°30'37" E - - 1325.86'

FND. BRASS CAP MON.
PER REF. #2 & #3

THIS PROPERTY IS NOT A PART OF
THE SHEPHERDS FLAT WIND
ENERGY PROJECT

PARCEL 2, PP
2004-4

PALMATEER COUNTY ROAD
S 65°58'59" E
S 65°58'59" E

REF. #3 SHOWS
40' R/W WIDTH

PALMATEER COUNTY
ROAD LOCATION BASED
ON FIELD TIES TO
TRAVELED CENTERLINE

DANA L. & TONYA J. HEIDEMAN
PARCEL 1, PARTITION PLAT 2004-4

TERRI JANE PALMATEER 50% INT.
AND RONALD TED PALMATEER
TESTAMENTARY TRUST

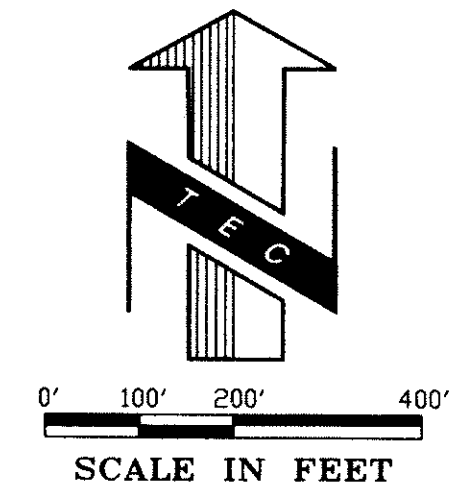
SEARCHED FOR,
NOT FOUND,
CALC. D.P.

DANA L. & TONYA J. HEIDEMAN

LINE	BEARING	DISTANCE
L7	S 33°09'27" E	46.87'
L8	S 15°35'25" E	122.34'
L9	S 15°35'25" E	106.09'
L25	S 01°29'33" E	48.11'
L26	S 01°29'33" E	345.51'
L27	S 39°46'17" W	385.55'
L28	S 22°38'33" W	161.02'
L37	N 88°30'31" E	338.99'

TO R/W LINE (398.91' REF.#3)

TO R/W LINE (334.72' REF.#3)



LEGEND :

- PROPERTY OWNERSHIP LINE
- CENTERLINE ROADS
- COUNTY LINE
- EXISTING FENCE LINE EXISTING

TWP.1N., R.23E., W.M.

6	5	4	3	2	1
7	8	9	10	11	12
18	17	16	15	14	13
19	20	21	22	23	24
30	29	28	27	26	25
31	32	33	34	35	36

INDEX

- SET SECTION CORNER, 5/8" x 30" REBAR WITH 2-1/2" ALUMINUM CAP
- SET 1/4 CORNER, 5/8" x 30" REBAR WITH 2-1/2" ALUMINUM CAP
- FOUND SECTION CORNER, AS NOTED
- FOUND 1/4 CORNER, AS NOTED
- CALCULATED SECTION CORNER
- CALCULATED 1/4 CORNER
- SET 5/8" x 30" REBAR WITH YELLOW PLASTIC CAP, INSCRIBED "B BESEDA PLS 50800"
- FOUND MONUMENTS, AS NOTED.
- CALCULATED CORNERS, NOT SET.
- G.L.O. BEARING AND DISTANCE UNLESS OTHERWISE NOTED

NOTE : ALL OTHERS AS NOTED ON PLAN

CURVE	DELTA	RADIUS	ARC LENGTH	TANGENT	CHORD BEARING	CHORD LENGTH
C31	64°29'26"	170.02'	191.37'	107.26'	S 33°44'16" E	181.43'
C32	23°22'18"	230.03'	93.83'	47.58'	S 13°10'42" E	93.18'
C33	41°07'07"	230.03'	165.08'	86.28'	S 45°25'25" E	161.56'
C34	30°05'44"	830.10'	436.02'	223.17'	N 50°56'07" W	431.03'
C35	30°05'44"	770.09'	404.50'	207.03'	N 50°56'07" W	399.87'
C36	02°43'48"	5310.64'	253.04'	126.54'	N 34°31'21" W	253.02'
C37	02°43'48"	5250.63'	250.18'	125.11'	N 34°31'21" W	250.16'
C38	17°34'02"	930.11'	285.18'	143.72'	N 24°22'26" W	284.06'
C39	17°34'02"	870.10'	266.78'	134.44'	N 24°22'26" W	265.73'

RECEIVED BY
Morrow County Surveyor
Date APRIL 18 2012
Rec'd By SKP
No. 1640-C

REGISTERED
PROFESSIONAL
LAND SURVEYOR

OREGON
JULY 13, 1999
BENJAMIN B. BESEDA
50800

EXPIRES: 12/31/2013

Date	No.	Revisions	By	App.
SURVEY				
FOR CAITHNESS SHEPHERDS FLAT, LLC				
DETAIL MAP 1N-23-20 AND 21				
SECTIONS 20 AND 21,				
TOWNSHIP 1 N., RANGE 23 E. W.M.				
MORROW COUNTY, OREGON				
TENNESON ENGINEERING CORP.				
CONSULTING ENGINEERS				
3313 W. 2nd STREET, SUITE 100				
THE DALLES, OREGON 97058				
PH. 541-296-9177 FAX 541-296-6657				
Survey	Calculation	Design	Date	Scale
T.E.C.	B.B.B.	B.B.B.	3/29/2012	1"=200'
Drawn	DWG. No.	Work Order No.	Sheet	
S.D.H.	K:\ACAD\13300\13312\13312_Survey.dwg	13312	13 of 14	

LAND CORNER DETAILS (MORROW COUNTY)

TOWNSHIP 2 NORTH, RANGE 23 EAST

N 1:

1867 ORIGINAL GLO SURVEY SET A POST IN MOUND OF EARTH WITH CHARRED STAKE PITS. THIS SURVEY FOUND NO EVIDENCE OF THE ORIGINAL CORNER. THIS SURVEY CALCULATED THE CORNER POSITION PER REFERENCE #7, WHICH HAD HELD THE INTERSECTION OF ANCIENT FENCES. FIELD INSPECTION VERIFIED ACCEPTANCE OF THIS CORNER LOCATION. SET A 2-1/2" ALUMINUM CAP ON A 5/8" X 30" REBAR FLUSH WITH GROUND SURFACE. ALSO SET 5/8" X 30" REBAR WITH YELLOW PLASTIC CAP INSCRIBED "B BESEDA PLS 50800" AS REFERENCES AS FOLLOWS:

1. NORTH 67°13'47" EAST 58.43 FEET.
2. SOUTH 20°29'57" EAST 66.07 FEET.
3. SOUTH 47°20'42" WEST 69.33 FEET.
4. NORTH 29°26'59" WEST 65.72 FEET.

ALL REFERENCES ARE SET FLUSH WITH GROUND SURFACE.

R 13:

1867 ORIGINAL GLO SURVEY SET A POST IN MOUND WITH CHARRED STAKE PITS. THIS SURVEY FOUND NO EVIDENCE OF THE ORIGINAL CORNER. THIS SURVEY ACCEPTED INTERSECTION OF ANCIENT FENCES RUNNING TO THE EAST, WEST, AND NORTH FROM THE CORNER LOCATION. SET A 2-1/2" ALUMINUM CAP ON A 5/8" X 30" REBAR FLUSH WITH GROUND SURFACE. ALSO SET 5/8" X 30" REBAR WITH YELLOW PLASTIC CAP INSCRIBED "B BESEDA PLS 50800" AS REFERENCES AS FOLLOWS:

1. NORTH 36°42'54" EAST 54.12 FEET.
2. SOUTH 49°13'58" EAST 31.79 FEET.
3. SOUTH 46°28'22" WEST 58.56 FEET.
4. NORTH 43°55'35" WEST 60.00 FEET.

ALL REFERENCES ARE SET FLUSH WITH GROUND SURFACE.

R 15:

1867 ORIGINAL GLO SURVEY SET A POST IN MOUND WITH CHARRED STAKE PITS. THIS SURVEY FOUND NO EVIDENCE OF THE ORIGINAL CORNER. THIS SURVEY ACCEPTED AN ANCIENT FENCE CORNER. FENCES RUN TO THE NORTH AND SOUTH FROM THE CORNER LOCATION. SET A 2-1/2" ALUMINUM CAP ON A 5/8" X 30" REBAR FLUSH WITH GROUND SURFACE. ALSO SET 5/8" X 30" REBAR WITH YELLOW PLASTIC CAP INSCRIBED "B BESEDA PLS 50800" AS REFERENCES AS FOLLOWS:

1. NORTH 88°30'31" EAST 57.03 FEET.
2. SOUTH 01°25'54" EAST 48.47 FEET.
3. NORTH 88°34'00" WEST 49.22 FEET.
4. NORTH 27°35'36" WEST 81.01 FEET.

ALL REFERENCES ARE SET FLUSH WITH GROUND SURFACE.

V5:

1867 ORIGINAL GLO SURVEY SET POST IN MOUND OF EARTH WITH CHARRED STAKE PITS. THIS SURVEY FOUND NO EVIDENCE OF THE ORIGINAL CORNER. THIS SURVEY ACCEPTED THE INTERSECTION OF ANCIENT FENCES RUNNING SOUTH, EAST, AND WEST FROM THE CORNER LOCATION. SET A 2-1/2" ALUMINUM CAP ON A 5/8" X 30" REBAR FLUSH WITH GROUND SURFACE. ALSO SET 5/8" X 30" REBAR WITH YELLOW PLASTIC CAP INSCRIBED "B BESEDA PLS 50800" AS REFERENCES AS FOLLOWS:

1. NORTH 44°39'10" EAST 40.96 FEET.
2. SOUTH 89°53'14" EAST 27.43 FEET, SET IN EAST WEST FENCE.
3. SOUTH 00°58'13" EAST 28.58 FEET, SET IN NORTH SOUTH FENCE.
4. SOUTH 89°20'29" WEST 29.15 FEET, SET IN EAST WEST FENCE.

ALL REFERENCES ARE SET FLUSH WITH GROUND SURFACE.

RECEIVED BY
Morrow County Surveyors
Date APRIL 18 2012
Dred By SKB
No. 1640-C

V 15:

1867 ORIGINAL GLO SURVEY SET POST IN MOUND WITH CHARRED STAKE PITS. THIS SURVEY FOUND NO EVIDENCE OF THE ORIGINAL CORNER. THIS SURVEY ACCEPTED THE INTERSECTION OF A ROADWAY CENTERLINE WITH AN ANCIENT NORTH-SOUTH FENCE. SET A 2-1/2" ALUMINUM CAP ON A 5/8" X 30" REBAR FLUSH WITH GROUND SURFACE. ALSO SET 5/8" X 30" REBAR WITH YELLOW PLASTIC CAP INSCRIBED "B BESEDA PLS 50800" AS REFERENCES AS FOLLOWS:

1. NORTH 22°29'35" EAST 18.97 FEET.
2. SOUTH 00°10'24" EAST 24.81 FEET, SET ON WEST SIDE OF NORTH SOUTH FENCE.
3. NORTH 49°30'49" WEST 47.12 FEET.
4. NORTH 27°23'30" WEST 36.09 FEET.

ALL REFERENCES ARE SET FLUSH WITH GROUND SURFACE.

Z 13:

1867 ORIGINAL GLO SURVEY SET A STONE 18 X 10 X 4. THIS SURVEY FOUND NO EVIDENCE OF THE ORIGINAL CORNER. THIS SURVEY ACCEPTED THE INTERSECTION OF THE ANCIENT FENCES RUNNING TO THE SOUTH AND EAST FROM THE CORNER LOCATION. SET A 2-1/2" ALUMINUM CAP ON A 5/8" X 30" REBAR FLUSH WITH GROUND SURFACE. ALSO SET 5/8" X 30" REBAR WITH YELLOW PLASTIC CAP INSCRIBED "B BESEDA PLS 50800" AS REFERENCES AS FOLLOWS:

1. NORTH 60°55'58" EAST 17.82 FEET.
2. SOUTH 75°25'26" EAST 39.79 FEET.
3. SOUTH 30°35'21" EAST 19.39 FEET.
4. SOUTH 42°23'10" WEST 23.26 FEET.

ALL REFERENCES ARE SET FLUSH WITH GROUND SURFACE.

Z 15:

1867 ORIGINAL GLO SURVEY SET A POST IN MOUND WITH CHARRED STAKE PITS. THIS SURVEY FOUND NO EVIDENCE OF THE ORIGINAL CORNER. THIS SURVEY HELD AN ANCIENT FENCE CORNER. FENCES RUN TO THE NORTH AND WEST FROM THE CORNER LOCATION. SET A 2-1/2" ALUMINUM CAP ON A 5/8" X 30" REBAR FLUSH WITH GROUND SURFACE. ALSO SET 5/8" X 30" REBAR WITH YELLOW PLASTIC CAP INSCRIBED "B BESEDA PLS 50800" AS REFERENCES AS FOLLOWS:

1. NORTH 52°06'31" EAST 25.09 FEET.
2. SOUTH 39°41'49" EAST 49.32 FEET.
3. SOUTH 01°26'50" EAST 15.20 FEET.
4. NORTH 26°53'58" WEST 11.26 FEET.

ALL REFERENCES ARE SET FLUSH WITH GROUND SURFACE.

TOWNSHIP 1 NORTH, RANGE 23 EAST

E 9:

1867 ORIGINAL GLO SURVEY SET STAKE IN EARTH MOUND. THIS SURVEY FOUND NO EVIDENCE OF THE ORIGINAL CORNER. THIS SURVEY HELD AN ANCIENT FENCE CORNER. FENCES RUN EAST, WEST, AND NORTH FROM THE CORNER LOCATION. SET A 2-1/2" ALUMINUM CAP ON A 5/8" X 30" REBAR FLUSH WITH GROUND SURFACE. ALSO SET 5/8" X 30" REBAR WITH YELLOW PLASTIC CAP INSCRIBED "B BESEDA PLS 50800" AS REFERENCES AS FOLLOWS:

1. NORTH 89°42'00" EAST 39.92 FEET, SET IN EAST WEST FENCE.
2. SOUTH 22°55'37" WEST 52.23 FEET.
3. NORTH 89°48'47" WEST 40.43 FEET, SET IN EAST WEST FENCE.
4. NORTH 02°44'30" WEST 32.20 FEET, SET ON WEST SIDE OF NORTH SOUTH FENCE.

ALL REFERENCES SET FLUSH WITH GROUND SURFACE.

LINE	BEARING	DISTANCE	LINE	BEARING	DISTANCE	LINE	BEARING	DISTANCE
L7	S 33°09'27" E	46.87'	L18	S 89°46'14" E	100.02'	L29	N 09°21'45" E	227.05'
L8	S 15°35'25" E	122.34'	L19	S 15°07'14" E	175.02'	L30	N 63°41'10" E	61.60'
L9	S 15°35'25" E	106.09'	L20	S 74°52'46" W	140.02'	L31	N 27°49'10" E	9.34'
L10	S 03°03'02" E	295.57'	L21	S 15°07'14" E	212.57'	L32	N 13°30'47" E	383.81'
L11	N 86°56'58" E	100.01'	L22	S 11°01'50" E	111.66'	L33	N 17°15'01" E	733.12'
L12	S 03°03'02" E	187.49'	L23	S 11°01'50" E	37.87'	L34	N 27°03'38" W	634.65'
L13	N 85°55'35" W	100.01'	L24	S 05°45'45" E	133.25'	L35	N 57°50'02" W	627.29'
L14	N 03°03'02" W	187.49'	L25	S 01°29'33" E	48.11'	L36	S 11°51'41" W	231.44'
L15	N 00°20'16" W	163.44'	L26	S 01°29'33" E	345.51'	L37	N 88°30'31" E	338.99'
L16	S 89°39'44" W	100.01'	L27	S 39°46'17" W	385.55'			
L17	S 00°20'16" E	162.45'	L28	S 22°38'33" W	161.02'			

CURVE	DELTA	RADIUS	ARC LENGTH	TANGENT	CHORD BEARING	CHORD LENGTH
C21	06°24'23"	240.03'	26.84'	13.43'	S 46°50'18" E	26.82'
C22	27°40'43"	630.08'	304.38'	155.22'	N 04°28'36" W	301.43'
C23	54°19'24"	355.04'	336.62'	182.17'	N 36°31'28" E	324.16'
C24	35°52'00"	420.05'	262.95'	135.94'	N 45°45'10" E	258.68'
C25	14°18'23"	1970.24'	491.95'	247.26'	N 20°39'58" E	490.67'
C31	64°29'26"	170.02'	191.37'	107.26'	S 33°44'16" E	181.43'
C32	23°22'18"	230.03'	93.83'	47.58'	S 13°10'42" E	93.18'
C33	41°07'07"	230.03'	165.08'	86.28'	S 45°25'25" E	161.56'
C34	30°05'44"	830.10'	436.02'	223.17'	N 50°56'07" W	431.03'
C35	30°05'44"	770.09'	404.50'	207.03'	N 50°56'07" W	399.87'
C36	02°43'48"	5310.64'	253.04'	126.54'	N 34°31'21" W	253.02'
C37	02°43'48"	5250.63'	250.18'	125.11'	N 34°31'21" W	250.16'
C38	17°34'02"	930.11'	285.18'	143.72'	N 24°22'26" W	284.06'
C39	17°34'02"	870.10'	266.78'	134.44'	N 24°22'26" W	265.73'
C40	07°07'27"	2421.83'	301.13'	150.76'	N 00°30'42" E	300.94'
C41	07°07'27"	2321.83'	288.70'	144.54'	N 00°30'42" E	288.51'
C42	23°11'59"	630.08'	255.12'	129.33'	S29°41'43"E	253.38'
C43	13°07'32"	2720.33'	623.18'	312.96'	N33°08'55"W	621.82'
C44	15°33'19"	1470.18'	399.14'	200.80'	N18°48'30"W	397.91'
C45	2°57'12"	2530.30'	130.42'	65.23'	S12°30'26"E	130.41'
C46	8°13'17"	1470.18'	210.96'	105.66'	N9°52'23"W	210.77'
C47	17°37'26"	770.09'	236.87'	119.38'	N3°02'58"E	235.94'
C48	7°00'41"	580.07'	70.98'	35.54'	S8°21'20"W	70.94'
C49	12°32'45"	630.00'	137.95'	69.25'	S 11°49'21" E	137.67'
C50	27°24'46"	1070.00'	511.93'	260.96'	N 19°15'22" W	507.06'
C51	16°45'47"	1280.00'	374.49'	188.59'	S 24°34'51" E	373.16'
C52	15°55'33"	1220.00'	339.11'	170.65'	N 24°09'44" W	338.02'
C53	15°55'33"	1220.15'	339.15'	170.67'	N 24°09'44" W	338.06'
C54	16°45'47"	1280.15'	374.54'	188.62'	S 24°34'51" E	373.20'
C55	27°24'46"	1070.13'	511.99'	260.99'	N 19°15'22" W	507.13'
C56	12°32'45"	630.08'	137.96'	69.26'	S 11°49'21" E	137.69'
C57	18°09'10"	2500.00'	792.07'	399.38'	S 39°27'42" E	788.76'
C58	13°06'37"	1250.00'	286.02'	143.64'	S 52°52'36" E	285.40'
C59	07°14'57"	3000.00'	379.56'	190.03'	N 55°48'27" W	379.31'
C60	05°16'19"	5000.00'	460.05'	230.19'	S 54°49'07" E	459.89'
C61	08°32'57"	1000.00'	149.21'	74.74'	N 50°23'36" W	149.07'
C62	50°12'11"	125.00'	109.53'	58.56'	N 20°10'59" W	106.06'
C63	03°44'14"	5530.66'	360.74'	180.43'	N 15°22'54" E	360.67'
C64	44°18'39"	970.12'	750.26'	395.02'	N 04°54'19" W	731.70'
C65	30°46'24"	670.08'	359.90'	184.40'	N 42°26'50" W	355.59'
C66	10°48'15"	1630.20'	307.40'	154.16'	N 52°25'54" W	306.95'

NARRATIVE:

THE PURPOSE OF THIS SURVEY WAS TO SHOW THE PROPERTY BOUNDARY LINES RESOLVED AND ESTABLISHED SECTION CORNER, 1/4 CORNERS, AND ROAD RIGHTS-OF-WAY FOR THE PROPERTIES IN THE SHEPHERDS FLAT WIND ENERGY PROJECT WITHIN TOWNSHIPS 1 AND 2 NORTH, RANGE 23 EAST, W.M. THESE RESOLUTIONS WERE MADE FOR THE ALTA/ACSM SURVEY COMPLETED FOR CAITHNESS ENERGY, LLC, FOR THIS WIND ENERGY PROJECT. THE PROPERTY BOUNDARIES SHOWN ARE BASED UPON CLIENT PROVIDED PRO FORMA TITLE REPORTS. PRIOR SURVEYS OR PLATS UTILIZED AS A PART OF THE RESOLUTION SHOWN HEREON ARE LISTED AS REFERENCES. PREVIOUS SURVEYS PROVIDED MINIMAL EXISTING MONUMENTATION WITHIN THE SHEPHERDS FLAT PROJECT BOUNDARY. PRIOR SURVEYS WERE HELPFUL FOR RESOLVING BOUNDARIES ALONG THE NORTHERN END AND SOUTHERN PORTION OF THE PROJECT. IN GENERAL, VERY FEW ORIGINAL GLO CORNERS WERE LOCATED. WHERE ORIGINAL CORNERS WERE LOCATED, THEY WERE HELD AS FOUND AND REMONUMENTED AND REFERENCED. THE MAJORITY OF THE CORNERS ESTABLISHED IN THIS SURVEY WERE AT LOCATIONS OF LONG-STANDING USE AND ACCEPTANCE SUCH AS ANCIENT FENCE CORNERS, ANCIENT FENCE AND/OR FENCE BERM LINE INTERSECTIONS, ROAD FENCE INTERSECTIONS, AND ROAD CENTERLINE INTERSECTIONS. PRIMARY CORNERS WERE MONUMENTED AS SHOWN ON THE SURVEY. DETAILED LAND CORNER INFORMATION IS PROVIDED FOR EACH CORNER ON SHEET 14 OF THIS SURVEY. ADDITIONALLY, LAND CORNER RECORD FORMS WERE FILED SEPARATELY WITH THE OFFICE OF THE COUNTY SURVEYOR. ADDITIONAL NOTES RELATED TO CORNER ESTABLISHMENT ARE SHOWN ON THE FACE OF THE SURVEY. SET SECTION CORNERS AND 1/4 CORNERS ARE A 2-1/2 INCH ALUMINUM CAP SET ON A 5/8" X 30" REBAR. THESE ARE SET FLUSH OR BURIED AS IS APPROPRIATE TO THE SPECIFIC CORNER LOCATION. REFERENCES ARE 5/8" X 30" REBAR WITH YELLOW PLASTIC CAP INSCRIBED "B BESEDA PLS 50800" ALSO SET FLUSH OR BURIED AS NECESSARY. PROJECT ROADS WHICH ARE ALSO BOUNDARY LINES WERE ESTABLISHED BY FIELD TIES TO THE TRAVELED CENTERLINE. DATA COLLECTION AND MONUMENTATION FOR THIS SURVEY WAS COMPLETED WITH TRIMBLE R8 RTK GPS UNITS OPERATED WITH TRIMBLE TSC2 HAND-HELD DATA COLLECTORS. ALL FIELD WORK WAS COMPLETED IN OREGON STATE PLANE NORTH ZONE GRID BEARINGS AND COORDINATES. DIMENSIONS SHOWN ON THIS SURVEY WERE SCALED TO GROUND DIMENSION AT THE NORTHWEST CORNER OF SECTION 6, TOWNSHIP 1 NORTH, RANGE 23 EAST. SCALE FACTOR WAS 1.00011991 TO SCALE FROM GRID TO GROUND DIMENSION.

REGISTERED PROFESSIONAL LAND SURVEYOR
(Signature)
OREGON
JULY 13, 1999
BENJAMIN B. BESEDA
50800
EXPIRES: 12/31/2013

Date	No.	Revisions	By	App.
SURVEY				
FOR CAITHNESS SHEPHERDS FLAT, LLC				
REFERENCES, CURVE AND LINE DATA,				
AND LAND CORNER DETAILS				
TOWNSHIPS 1 & 2 NORTH, RANGE 23 EAST, W.M.				
MORROW COUNTY, OREGON				
TENNESON ENGINEERING CORP.				
CONSULTING ENGINEERS				
3313 W. 2nd STREET, SUITE 100				
THE DALLES, OREGON 97058				
PH. 541-296-9177 FAX 541-296-6657				
Survey	Calculation	Design	Date	Scale
T.E.C.	B.B.B.	B.B.B.	3/30/2012	N/A
Drawn	DWG. No.	Work Order No.	Sheet	
S.D.H.	K:\ACAD\13300\13312\Survey2.dwg	13312	14 of 14	