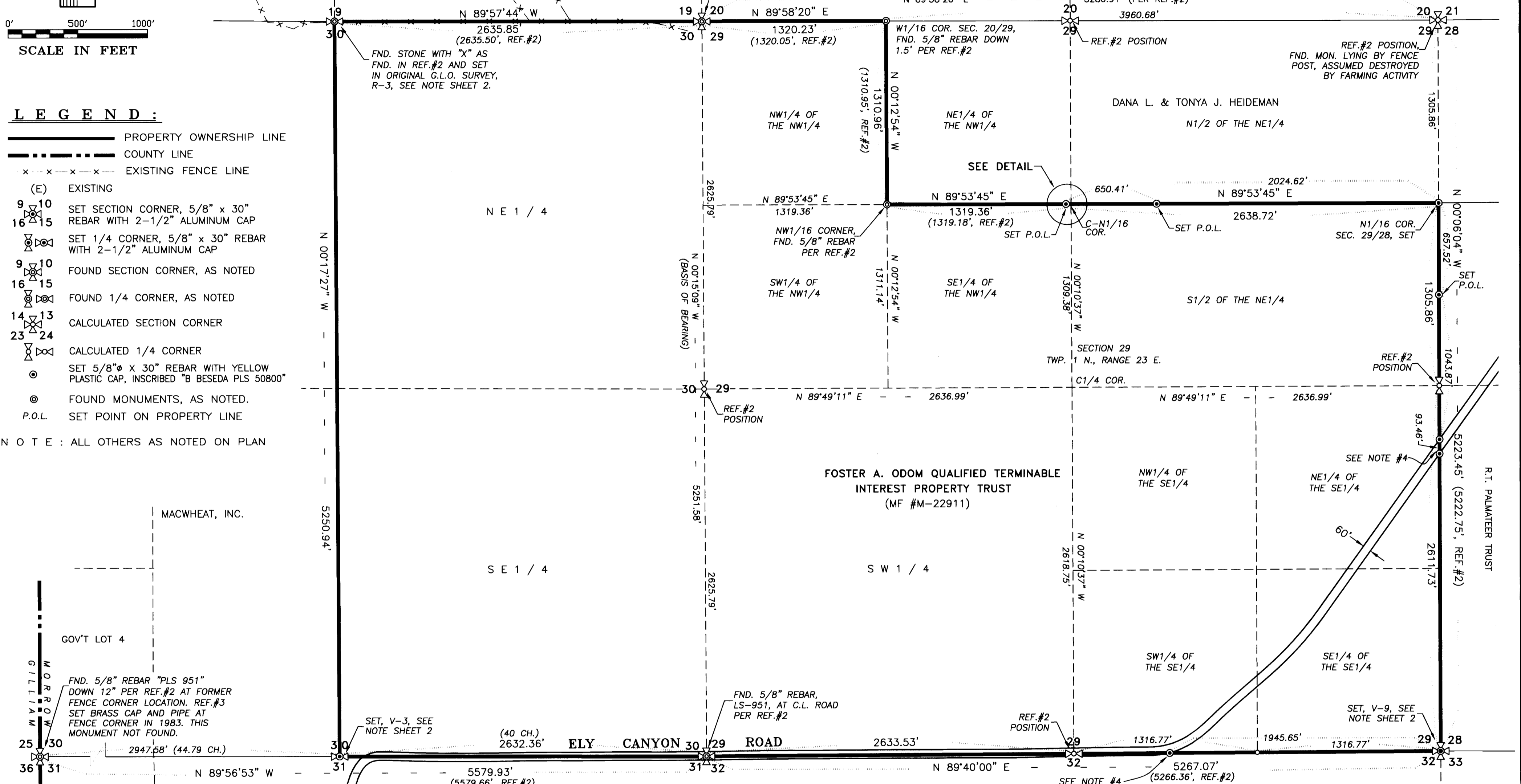
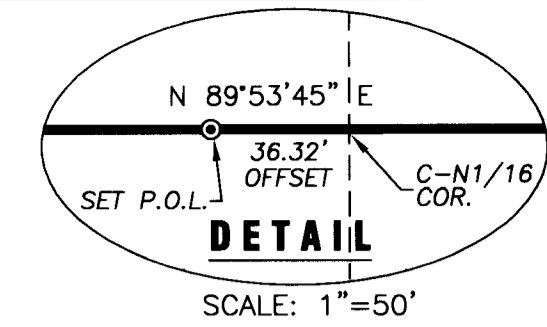


0' 500' 1000'
SCALE IN FEET

LEGEND:

- PROPERTY OWNERSHIP LINE
- - - COUNTY LINE
- x x x x EXISTING FENCE LINE
- (E) EXISTING
- 9 10 SET SECTION CORNER, 5/8" x 30" REBAR WITH 2-1/2" ALUMINUM CAP
- 16 15 SET 1/4 CORNER, 5/8" x 30" REBAR WITH 2-1/2" ALUMINUM CAP
- 9 10 FOUND SECTION CORNER, AS NOTED
- 16 15 FOUND 1/4 CORNER, AS NOTED
- 14 13 CALCULATED SECTION CORNER
- 23 24 CALCULATED 1/4 CORNER
- ⊙ SET 5/8" x 30" REBAR WITH YELLOW PLASTIC CAP, INSCRIBED "B BESEDA PLS 50800"
- ⊙ FOUND MONUMENTS, AS NOTED.
- P.O.L. SET POINT ON PROPERTY LINE

NOTE: ALL OTHERS AS NOTED ON PLAN



NOTES:

- 1) BASIS OF BEARING: BEARINGS SHOWN HEREON ARE BASED ON THE OREGON STATE PLANE COORDINATE SYSTEM, NORTH ZONE GRID, NAD 83 (1991) CORS (96) EPOCH 2002 BY GPS OBSERVATION ON THE FOUND MONUMENTS ON THE WEST LINE OF SECTION 29. USE A THETA ANGLE OF 0°22'18" AT THE SOUTHEAST CORNER OF SECTION 29 TO ROTATE TO TRUE NORTH.
- 2) THE MONUMENTATION SHOWN HEREON WAS COMPLETED ON JANUARY 13, 2012.
- 3) POINTS SET AT A CONVENIENT LOCATION ON PROPERTY LINE. THEY DO NOT REPRESENT THE ROAD RIGHT OF WAY. THE TRUE RIGHT OF WAY WAS NOT DETERMINED.

RECEIVED BY
Morrow County Surveyor
Date: Feb 22-2012
Rec'd By: SKB
No. 1637-C

REGISTERED
PROFESSIONAL
LAND SURVEYOR

OREGON
JULY 13, 1999
BENJAMIN B. BESEDA
50800
EXPIRES: 12/31/2013

Date	No.	Revisions	By	App.
SURVEY				
FOR FOSTER A. ODOM Q.T.I.P. TRUST TAX LOT 1N-23 6200				
SECTIONS 29 AND 30, TWP. 1 N., RANGE 23 E., W.M. MORROW COUNTY, OREGON				
TENNESON ENGINEERING CORP.				
CONSULTING ENGINEERS 3313 W. 2nd STREET, SUITE 100 THE DALLES, OREGON 97058 PH. 541-296-9177 FAX 541-296-6657				
Survey	Calculation	Design	Date	Scale
T.E.C.	B.B.B.	B.B.B.	2/8/2012	1"=500'
Drawn	DWG. No.	Work Order No.	Sheet	
S.D.H.	K:\ACAD\13500\13520svy.dwg	13520	1 of 2	

1637

T.1N., R.23E.:

V-3

1867 ORIGINAL GLO SURVEY SET CHARRED STAKE IN A RAISED MOUND. THIS SURVEY FOUND NO EVIDENCE OF ORIGINAL CORNER. CALCULATED CORNER LOCATION BY SINGLE PROPORTION WHICH LANDS IN A PLOWED FIELD. SET 2 1/2" ALUMINUM CAP ON A 5/8" x 30" REBAR 2 FEET BELOW GROUND SURFACE, ALSO SET 5/8" x 30" REBAR WITH YELLOW PLASTIC CAP INSCRIBED "B BESEDA PLS 50800" AS REFERENCES AS FOLLOWS:
 N 34°20'10" W - 61.74', DOWN 2 FEET IN PLOWED FIELD
 S 51°08'20" W - 49.58', DOWN 2 FEET IN PLOWED FIELD
 N 29°27'44" E - 110.12' FLUSH
 S 33°56'39" E - 82.84' FLUSH

V-9

1867 ORIGINAL GLO SURVEY SET CHARRED STAKE IN A RAISED MOUND. THIS SURVEY FOUND NO EVIDENCE OF ORIGINAL CORNER. REFERENCE #2 ACCEPTED A FOUR WAY FENCE INTERSECTION. SET 2 1/2" ALUMINUM CAP ON 5/8" x 30" REBAR AT POSITION CALCULATED PER REFERENCE #2. FOUND FENCE CORNER IN PLACE AND REMNANTS OF FENCES STILL RUN NORTH, EAST AND WEST. ALSO SET 5/8" x 30" REBAR WITH YELLOW PLASTIC CAP INSCRIBED "B BESEDA PLS 50800" AS REFERENCES AS FOLLOWS:
 N 49°03'55" W - 49.07', UP 0.2'
 N 47°22'28" E - 45.11', UP 0.2'
 S 56°30'09" E - 28.30', UP 0.2'
 S 63°34'50" W - 47.97', UP 0.2'

R-3

1867 ORIGINAL GLO SURVEY SET A STONE 16x10x6 INCHES. THIS STONE WAS FOUND IN REFERENCE #2. STONE FALLS APPROXIMATELY 2 FEET SOUTH OF EAST-WEST FENCE (OLD). SET 5/8" x 30" REBAR WITH YELLOW PLASTIC CAP INSCRIBED "B BESEDA PLS 50800" AS REFERENCES AS FOLLOWS:
 N 28°42'09" W - 57.61', UP 0.2'
 N 33°55'40" E - 68.42', UP 0.2'
 S 45°07'10" E - 68.50', UP 0.2'
 S 33°00'23" W - 50.89', UP 0.2'

NARRATIVE:

THE PURPOSE OF THIS SURVEY WAS TO ESTABLISH AND MONUMENT THE EXTERIOR BOUNDARY OF THE FOSTER A. ODOM QUALIFIED TERMINABLE INTEREST PROPERTY TRUST IN SECTIONS 29 AND 30 OF TOWNSHIP 1 NORTH, RANGE 23 EAST, W.M. PRIOR TO COMPLETING THE FIELD WORK AND MAPPING NECESSARY FOR THIS PROJECT, RESEARCH WAS MADE TO OBTAIN COPIES OF LEGAL DESCRIPTIONS FOR THE SUBJECT AND ADJOINING PROPERTIES AND TO OBTAIN COPIES OF PRIOR SURVEYS AND PLATS CONDUCTED ON OR IN THE VICINITY OF THE SUBJECT PROPERTY. PRIOR SURVEYS UTILIZED AS A PART OF THE RESOLUTION SHOWN HEREON ARE LISTED AS REFERENCES.

IN THE FIELD, MONUMENTS WERE FOUND, AS SHOWN, PER REFERENCES #2 AND #3. THESE CORNERS WERE FOUND TO CLOSELY MATCH RECORD LOCATION AND WERE HELD AS FOUND. FROM THESE LOCATIONS, THE NORTHEAST AND SOUTHEAST CORNERS OF SECTION 29 WERE CALCULATED PER REFERENCE #2. SECTION 29 WAS THEN RESUBDIVIDED PER STANDARD METHODS AS WAS ESTABLISHED IN REFERENCE #2 AS SHOWN ON THE SURVEY. THE SOUTHEAST CORNER OF SECTION 29 WAS RESET AS NOTED. THE PREVIOUSLY ACCEPTED FENCE CORNER WAS NOW GONE. FENCE REMNANTS WERE STILL VISIBLE TO THE NORTH, EAST, AND WEST. THIS SURVEY ALSO SET THE SOUTH 1/4 CORNER OF SECTION 30. THIS POSITION WAS ESTABLISHED BY SINGLE PROPORTION. ADDITIONAL PROPERTY CORNER MONUMENTS WERE SET, AS SHOWN ON THE SURVEY.

SET MONUMENTS ARE 5/8" X 30" REBAR WITH YELLOW PLASTIC CAP INSCRIBED "B BESEDA PLS 50800" UNLESS NOTED OTHERWISE.

ADDITIONAL LAND CORNER INFORMATION IS SHOWN ON THE SURVEY FOR THE SOUTHEAST CORNER OF SECTION 29 AND THE NORTH AND SOUTH 1/4 CORNERS OF SECTION 30. LAND CORNER RECORDS WERE ALSO FILED WITH THE MORROW COUNTY SURVEYOR'S OFFICE FOR THESE CORNERS.

RECEIVED BY
 Morrow County Surveyor
 Date, FEB 22 2012
 Rec'd By, SKB
 No. 1633-C

REFERENCES:

- 1) ORIGINAL GLO SECTION SUBDIVISION FIELD NOTES AND PLAT MAP FOR TOWNSHIP 1 NORTH, RANGE 23 EAST. B.J. PENGRA, DEP. SURVEYOR CONTRACT No. 119 FEBRUARY 1867
- 2) SURVEY FOR FOUR MILE LAND CO. BY EDWARDS SURVEYING FILED SEPTEMBER 2005 C.S. No. 1440-C
- 3) SURVEY FOR TILL STONE BY KRUMBEIN ENGINEERING LTD. FILED JUNE 18, 1983 C.S. No. D-618-K
- 4) ALTA/ASCM LAND TITLE SURVEY FOR THE SHEPHERDS FLAT WIND PROJECT FOR CAITHNESS SHEPHERDS FLAT, LLC BY TENNESON ENGINEERING CORP. W.O.#13312 COMPLETED DECEMBER, 2010 NO MONUMENTATION COMPLETED, NOT FILED
- 5) PARTITION PLAT 2004-4 FOR FOUR MILE LAND COMPANY BY EDWARDS SURVEYING C.S. No. 1412 C

NOTES:

- 1) BASIS OF BEARING: BEARINGS SHOWN HEREON ARE BASED ON THE OREGON STATE PLANE COORDINATE SYSTEM, NORTH ZONE GRID, NAD 83 (1991) CORS (96) EPOCH 2002 BY GPS OBSERVATION ON THE FOUND MONUMENTS ON THE WEST LINE OF SECTION 29. USE A THETA ANGLE OF 0°22'18" AT THE SOUTHEAST CORNER OF SECTION 29 TO ROTATE TO TRUE NORTH.
- 2) THE MONUMENTATION SHOWN HEREON WAS COMPLETED ON JANUARY 13, 2012.
- 3) POINTS SET AT A CONVENIENT LOCATION ON PROPERTY LINE. THEY DO NOT REPRESENT THE ROAD RIGHT OF WAY. THE TRUE RIGHT OF WAY WAS NOT DETERMINED.

LEGEND:

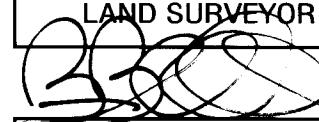
- PROPERTY OWNERSHIP LINE
- COUNTY LINE
- x - x - x - x - EXISTING FENCE LINE
- (E) EXISTING
- 9 10 SET SECTION CORNER, 5/8" x 30" REBAR WITH 2-1/2" ALUMINUM CAP
- 16 15 SET 1/4 CORNER, 5/8" x 30" REBAR WITH 2-1/2" ALUMINUM CAP
- 9 10 FOUND SECTION CORNER, AS NOTED
- 16 15 FOUND 1/4 CORNER, AS NOTED
- 14 13 CALCULATED SECTION CORNER
- 23 24 CALCULATED 1/4 CORNER
- ⊙ SET 5/8" x 30" REBAR WITH YELLOW PLASTIC CAP, INSCRIBED "B BESEDA PLS 50800"
- ⊙ FOUND MONUMENTS, AS NOTED.
- P.O.L. SET POINT ON PROPERTY LINE

NOTE: ALL OTHERS AS NOTED ON PLAN

TWP.1N., R.23E., W.M.

6	5	4	3	2	1
7	8	9	10	11	12
18	17	16	15	14	13
19	20	21	22	23	24
30	29	28	27	26	25
31	32	33	34	35	36

INDEX

REGISTERED PROFESSIONAL LAND SURVEYOR

 OREGON
 JULY 13, 1999
 BENJAMIN B. BESEDA
 50800
 EXPIRES: 12/31/2013

Date	No.	Revisions	By	App.
SURVEY				
FOR FOSTER A. ODOM Q.T.I.P. TRUST TAX LOT 1N-23 6200				
SECTIONS 29 AND 30, TWP. 1 N., RANGE 23 E., W.M. MORROW COUNTY, OREGON				
TENNESON ENGINEERING CORP. CONSULTING ENGINEERS 3313 W. 2nd. STREET, SUITE 100 THE DALLES, OREGON 97058 PH. 541-296-9177 FAX 541-296-6657				
Survey	Calculation	Design	Date	Scale
T.E.C.	B.B.B.	B.B.B.	2/8/2012	N/A
Drawn	DWG. No.	Work Order No.	Sheet	
S.D.H.	K:\ACAD\13500\13520svy.dwg	13520	2 of 2	