

PARTITION PLAT No. 2012 - 1

A Replat of Parcel 2 of Partition Plat 2006-09
 Morrow County, Oregon LP-N-425, R-N-22-11
 Township 4 North, Range 25 East, W.M.,
 Section 2,

for:
 Port of Morrow
 P.O. Box 200, #2 Marine Drive
 Boardman, Oregon 97818

PROPERTY DESCRIPTION:

The Property being Partitioned is Property described as:
 Parcel 2 of Partition Plat 2006-09 as filed in the Record
 of Partition Plats, Morrow County, Oregon.

SURVEYOR'S CERTIFICATE & NARRATIVE:

I, Ronald V. McKinnis, being a Registered Professional Land Surveyor of the State of Oregon, certify that I have correctly surveyed and monumented the lands as portrayed on this Plat according to ORS Chapter 92 of the State of Oregon.

This survey is based on my previous Plats for the Port of Morrow in Section 2 of the Port's East Beach Property. The many legal descriptions for lease properties in this area are based on the location of the South Quarter Corner of Section 2 with the Bearing Base as shown, consistent with previous plats. I have maintained this Bearing Base for that reason and the Quarter Corner remains the Initial Point for the Parcels created in this Plat. In Partition Plat 2006-09, the Port dedicated the right of ways for Lewis & Clark Drive, Rail Loop Drive, and Dewey West Lane. Parcel 2 and Parcel 3 of this Plat are properties that are trapped in the center of the Port's East Beach Rail Loop. They were originally leased properties that are now required to be discrete parcels for financing purposes and therefore the Port is creating this plat. I set monuments for the boundaries of both parcels. As the roads were developed and paved, monuments have been set at the various locations of the centerlines of those completed roads (intersections, PC's, PT's, and major POT points). The Port's road monuments help maintain the definition of both the Platted and Leased properties in the Port's East Beach Industrial Park. Surveys conducted by the Port are completed with a GPS RTK Total Station set at Port control monuments that are tied to a Port of Morrow Grid System that was extended from the ODOT I-84 construction coordinate system of the 1960's. The Port's grid system helps maintain consistency with land divisions and infrastructure development throughout the Port's Industrial Parks.

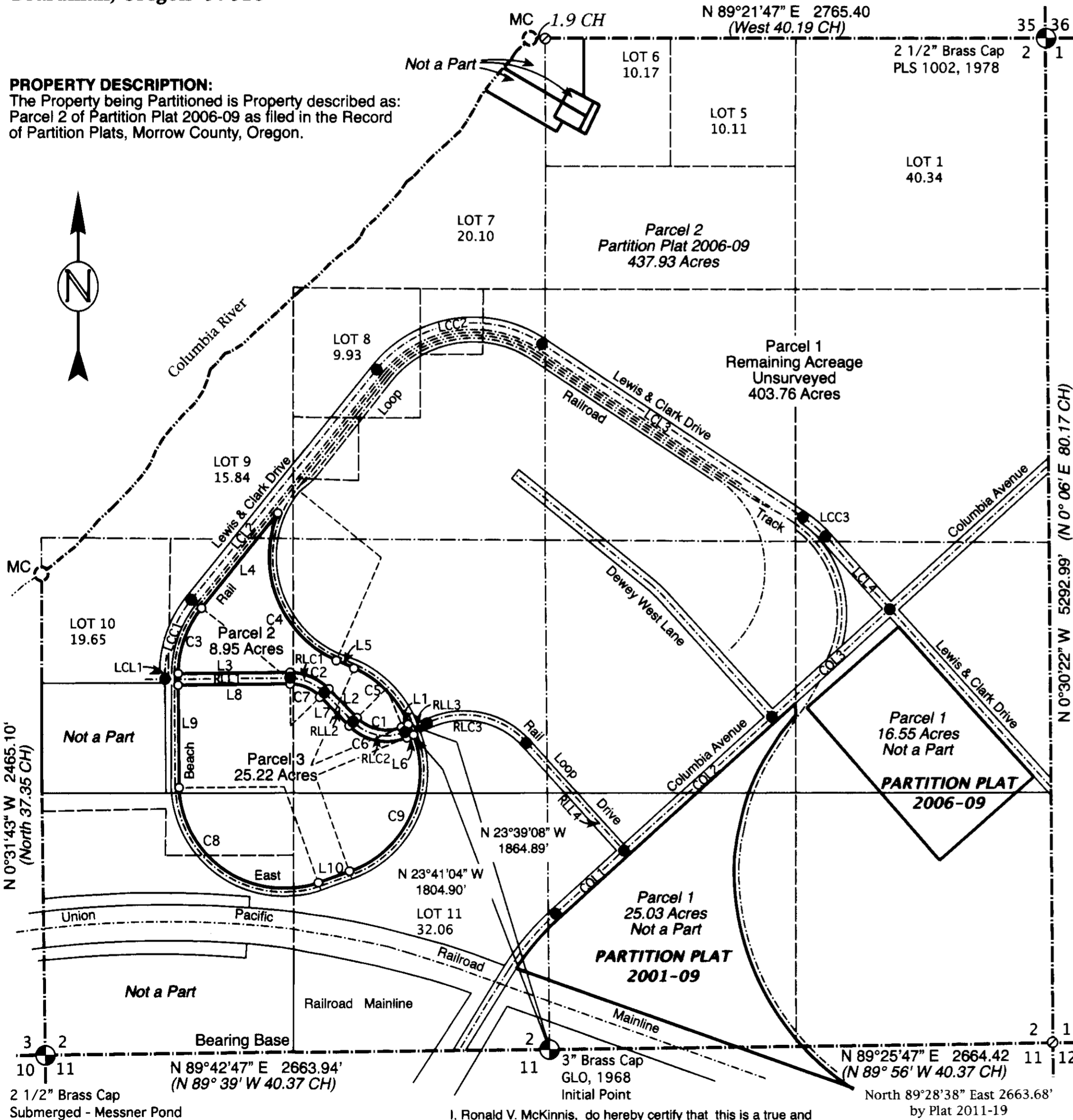
ACKNOWLEDGMENT / DEDICATION:

I, the undersigned owner of the Property as shown and described on this Plat, do hereby acknowledge that I have caused this plat to be created. I recognize this Plat as the Official Plat and Map of the Partition as filed in the County of Morrow, State of Oregon.

Don Russell
 Don Russell, Chairman,
 Board of Commissioners, for Port of Morrow

On this 24th day of JANUARY, 2012, the above individual, Don Russell, appeared personally before me and is known to me to be the identical individual who executed this plat and acknowledgement and that he did so freely and voluntarily of his own will.

Before me: *Nora Kathleen McGowan*
 Notary Public for Oregon
 My Printed Name is Nora Kathleen McGowan
 My Commission No. is 452474
 My Commission Expires Oct. 16, 2014



Line Section	Bearing	Distance	Road Section	Bearing	Distance
L1	S 67° 19' 28" W	30.00'	RLL1	N 89° 28' 17" E	661.68'
L2	N 44° 30' 32" W	215.24'	RLL2	S 44° 40' 32" E	215.24'
L3	S 89° 28' 17" W	591.59'	RLL3	N 67° 19' 28" E	150.00'
L4	N 38° 56' 09" E	634.14'	RLL4	S 42° 07' 35" E	767.92'
L5	S 66° 16' 15" E	100.27'	LCL1	N 00° 31' 43" W	20.00'
L6	S 67° 19' 28" W	30.00'	LCL2	N 38° 56' 09" E	1561.42'
L7	N 44° 30' 32" W	215.24'	LCL3	S 56° 29' 29" E	1655.60'
L8	S 89° 28' 17" W	591.68'	LCL4	S 42° 07' 35" E	513.53'
L9	S 00° 31' 43" E	540.45'	COL1	N 47° 52' 25" E	491.80'
L10	N 70° 22' 39" E	174.25'	COL2	N 47° 52' 25" E	1052.61'
			COL3	N 47° 52' 25" E	843.72'

Curve Section	Arc Length	Radius	Δ Angle	CD Bearing	CD Distance
C1	261.10'	220.00'	68° 00' 00"	N 78° 40' 31" W	246.05'
C2	224.08'	280.00'	45° 51' 11"	N 67° 36' 08" W	218.15'
C3	372.28'	555.00'	38° 25' 55"	N 19° 43' 11" E	365.34'
C4	919.46'	595.00'	88° 32' 23"	S 22° 00' 02" E	830.67'
C5	422.28'	555.00'	43° 35' 40"	S 44° 28' 23" E	412.17'
C6	332.31'	280.00'	68° 00' 00"	N 78° 40' 31" W	313.15'
C7	176.06'	220.00'	45° 51' 11"	N 67° 36' 08" W	171.40'
C8	1056.75'	555.00'	109° 05' 38"	S 55° 04' 32" E	904.20'
C9	901.37'	555.00'	93° 03' 12"	N 23° 51' 03" E	805.52'
RLC1	200.07'	250.00'	45° 51' 11"	S 67° 36' 08" E	194.78'
RLC2	296.71'	250.00'	68° 00' 00"	S 78° 40' 31" E	279.60'
RLC3	554.09'	450.00'	70° 32' 57"	S 77° 24' 04" E	519.75'
LCC1	430.49'	625.00'	39° 27' 52"	N 19° 12' 13" E	422.03'
LCC2	966.83'	655.00'	84° 34' 22"	N 81° 13' 20" E	881.42'
LCC3	156.70'	625.00'	14° 21' 54"	S 49° 18' 23" E	156.29'

N 0° 31' 43" W 2465.10'
 (North 37.35 CH)

N 0° 30' 22" W 5292.99' (N 0° 06' E 80.17 CH)

Bearing Base
 N 89° 42' 47" E 2663.94'
 (N 89° 39' W 40.37 CH)
 2 1/2" Brass Cap
 Submerged - Messner Pond

I, Ronald V. McKinnis, do hereby certify that this is a true and exact copy of the Original Plat as filed for the Port of Morrow in Morrow County, Oregon.

N 89° 25' 47" E 2664.42'
 (N 89° 56' W 40.37 CH)
 North 89° 28' 38" East 2663.68'
 by Plat 2011-19

REGISTERED PROFESSIONAL LAND SURVEYOR
Ronald V. McKinnis
 RONALD V. MCKINNIS
 JAN. 23, 1990
 2431
 Expires 12-31-12



SCALE 1" = 500 Ft.
 November, 2011
 Rev. 01-23-12

ENGINEERING - LAND SURVEYING - WATER RIGHTS
R. V. MCKINNIS ENGINEERING
 79980 Prindle Loop Road
 Hermiston, Oregon 97838
 (541) -567-2017

APPROVALS:

I certify that I have examined and approved this Partition Plat in accordance with ORS Chapter 92 and the Morrow County Subdivision Ordinance pertaining to Partition Plats only on this
25 day of Jan, 2012
John A. Logan
 Morrow County Surveyor

I certify that I have examined and approved this Partition Plat on this
24th day of JANUARY, 2012
Arden M. Jones
 Morrow County Planning Director

I certify that I have examined and approved this Partition Plat on this
25 day of JANUARY, 2012
Don Russell
 Morrow County Tax Assessor

I certify that I have examined and approved this Partition Plat on this
25 day of JANUARY, 2012
Don Russell
 Morrow County Tax Collector

Morrow County Clerk
 Recording Information SS }
 STATE OF OREGON
 County of Morrow

I certify that this instrument was received and recorded in the book of records of said county.
 Bobbi Childers,
 Morrow County Clerk
 by: _____ Deputy.
 DOC #: 2012-29485
 RCPT:
 01/25/12 2:06 PM

LEGEND

- Found Section Corner
- Meander Corner by GLO Record
- Set 5/8" x 30" Rebar W/ Plastic Cap, PLS #2431
- Found Alum. Cap in C.L. Pavement Port of Morrow Control
- CALCULATED POINT - Not Set
- SECTION LINES
- PARTITION BOUNDARIES
- (000) GLO Record Bearing / Distance