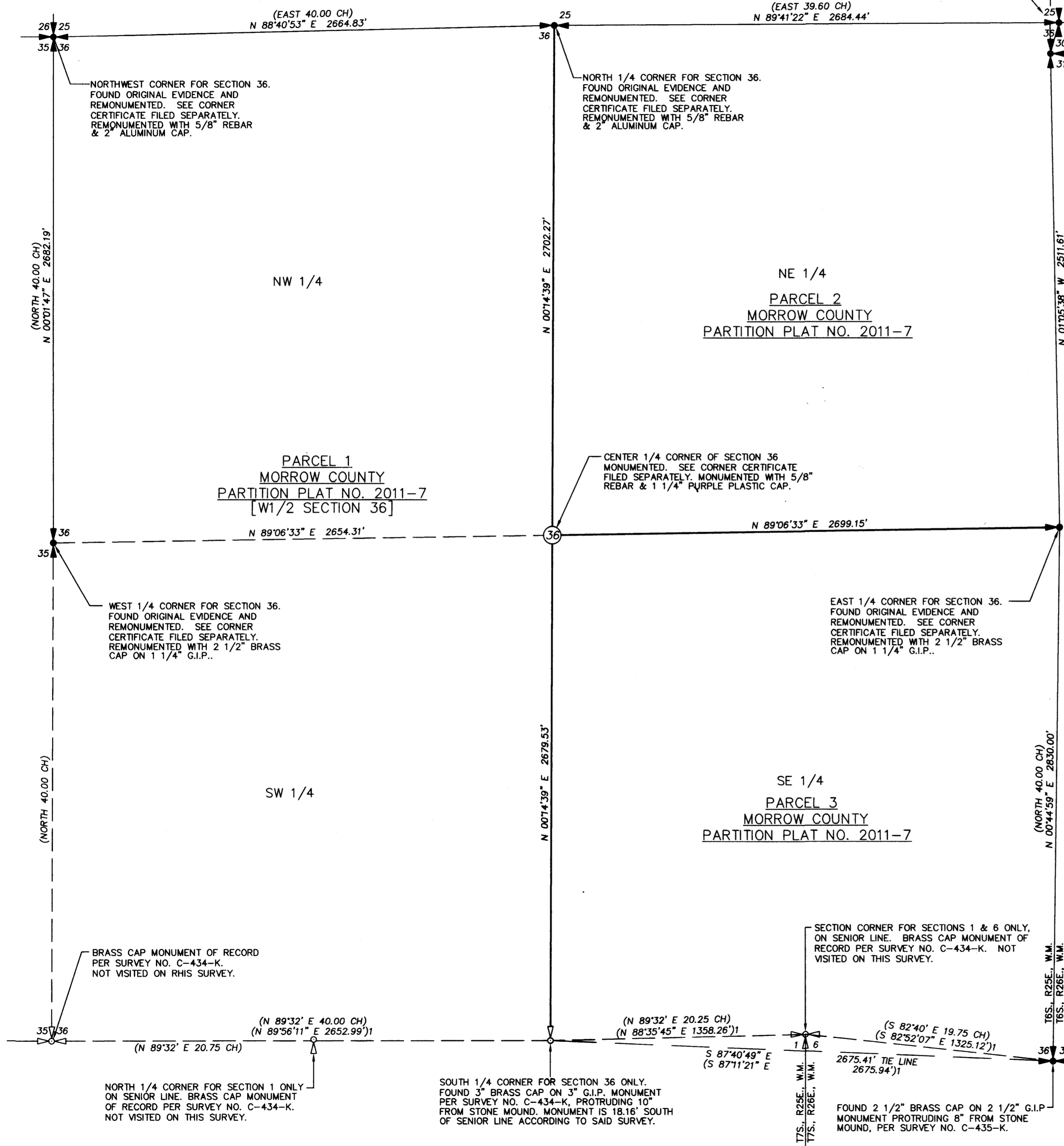


# RECORD OF SURVEY

NOTE: THE CLOSING CORNER TO SECS. 25 & 36 IS LOCATED APPROXIMATELY 48 FEET EAST FROM THE RANGE LINE.



REMONUMENTED WITH "MAGNAIL" IN LEAD. FOUND ORIGINAL EVIDENCE AND REMONUMENTED. SEE CORNER CERTIFICATE FILED SEPARATELY. CLOSING CORNER SECS. 25 & 36 ONLY. S 15°23'12" W 169.76' (SOUTH 2.40 CH)

CORNER SECS. 30 & 31 ONLY. FOUND ORIGINAL EVIDENCE AND REMONUMENTED. SEE CORNER CERTIFICATE FILED SEPARATELY. REMONUMENTED WITH "MAGNAIL" IN LEAD.

### LEGEND

- FOUND ORIGINAL SECTION CORNER EVIDENCE AND REMONUMENTED. SEE CORNER CERTIFICATE FILED SEPARATELY WITH THIS SURVEY.
- FOUND ORIGINAL 1/4 SECTION CORNER EVIDENCE AND REMONUMENTED. SEE CORNER CERTIFICATE FILED SEPARATELY WITH THIS SURVEY.
- SECTION CORNER MONUMENT OF RECORD, AS NOTED. NOT VISITED.
- FOUND ORIGINAL SECTION CORNER EVIDENCE AND REMONUMENTED, UNLESS OTHERWISE NOTED. SEE CORNER CERTIFICATE FILED SEPARATELY WITH THIS SURVEY.
- FOUND EVIDENCE OF 1/4 SECTION CORNER APPLYING TO SECTION 36 ONLY AND REMONUMENTED. SEE CORNER CERTIFICATE FILED SEPARATELY WITH THIS SURVEY.
- 1/4 SECTION CORNER MONUMENT OF RECORD APPLYING TO SECTION 36 ONLY.
- (XOX) RECORD DIMENSION FROM SURVEY BY GLO SURVEYOR EDWARD W. SANDERSON UNDER CONTRACT NO. 368, DATED SEPTEMBER 7, 1880.
- (XOX)1 RECORD DIMENSION FROM SURVEY BY KURT WEAVER, PLS 1679, RECORDED AS S.N. C-434-K OR C-435-K.
- SECTION SUBDIVISION LINE MARKED WITH STEEL FENCE POSTS AT RANDOM INTERVALS TO MARK THE LINE.
- S.N. INDICATES SURVEY NUMBER.
- G.I.P. INDICATES GALVANIZED IRON PIPE.

### NARRATIVE

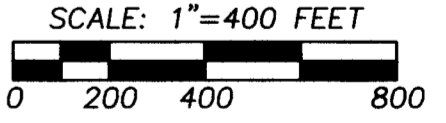
THIS SURVEY WAS PERFORMED AT THE REQUEST OF THE PALMER ESTATE TO SUBDIVIDE SECTION 36 TO MARK THE NORTH-SOUTH CENTERLINE & THE SOUTH LINE OF THE NORTHEAST QUARTER. STEEL FENCE POSTS WERE SET AT RANDOM INTERVALS ALONG THE NORTH-SOUTH CENTERLINE OF THE SECTION & ALONG THE SOUTH LINE OF THE NORTHEAST CORNER TO MARK THE LINE. ORIGINAL GLO EVIDENCE OR EXISTING RECORD MONUMENTS WERE FOUND AT ALL REQUIRED CORNERS ON THE PERIMETER OF THE SECTION AS SHOWN. CORNER CERTIFICATES FOR REMONUMENTED CORNERS ARE FILED CONCURRENTLY WITH THIS SURVEY. THE CENTER 1/4 CORNER WAS ESTABLISHED AND MONUMENTED AS INDICATED ON THE CORNER CERTIFICATE.

THE SURVEY WAS MADE WITH A TWO PERSON CREW USING A TRIMBLE 5700 SERIES GEODETIC GPS RECEIVERS OPERATED IN REAL TIME KINEMATIC MODE. BECAUSE OF VEGETATION, CERTAIN AREAS REQUIRED US TO SET TWO CONTROL POINTS WITH GPS & TIE THE CORNER EVIDENCE WITH A LEICA TPC 803, THREE SECOND TOTAL STATION.

E.W. SANDERSON, UNDER GLO CONTRACT NO. 368, RETRACED THE SOUTH LINE OF THE TOWNSHIP & ESTABLISHED THE RANGE LINE BETWEEN T6S., RANGES 25E & 26E., W.M., IN 1880. THE NOTES STATE HE RAN NORTH ON THE EAST LINE OF SECTION 36 & ESTABLISHED THE 1/4 CORNER & THE SECTION CORNER COMMON TO SECTIONS 25, 26, 30 & 31. THE SECTION CORNER WAS LATER CHANGED TO THE CORNER COMMON TO SECTIONS 30 & 31 ONLY. SANDERSON ALSO MARKED SEVERAL LINE TREES ALONG THE LINE. WE SEARCHED FOR THE LINE TREES WITHOUT SUCCESS. THEY HAVE ALL BEEN CUT. I NOTE THE GLO CALL TO WALL CREEK, (NOW PORTER CREEK) IS THREE CHAINS SHORT, (26 CHAINS VERSES 29 CHAINS). I FOUND AND HAD A MOUND OF STONE & 2 BEARING TREES FOR THE EAST 1/4 CORNER OF SECTION 36. I SEARCHED THE CORNER AREA WHERE THE WEST 1/4 CORNER OF SECTION 31 WOULD FALL & FOUND NOTHING BUT A VERY OLD KINZUA LUMBER TAG INDICATING "APPROX. 1/4 SECTION 31" ON A FALLEN, ROTTED TREE. DISCREPANCIES BETWEEN SANDERSON'S RECORD FOR ACCESSORIES TO THE EAST 1/4 CORNER OF SECTION 36 & THE SECTION CORNER COMMON TO SECTION 30 & 31 ARE NOTED ON THE CORNER CERTIFICATES. THE SOUTH BOUNDARY OF SECTION 36 IS IRREGULAR IN ALIGNMENT AS SHOWN, RESULTING IN SEPARATE 1/4 SECTION CORNERS FOR SECTIONS 36 AND 31. EVIDENCE INDICATES SANDERSON ACTUALLY ESTABLISHED THE EAST 1/4 CORNER OF SECTION 36 BUT NOT THE WEST 1/4 CORNER OF SECTION 31. SANDERSON LIKELY CHANGED HIS NOTES TO CONFORM WITH DICTATES FROM THE SURVEYOR GENERAL'S OFFICE, BUT NEVER CHANGED WHAT WAS MARKED IN THE FIELD. IN 1881, SANDERSON SUBDIVIDED T6S., R25E., W.M., ESTABLISHING A CLOSING CORNER FOR THE CORNER COMMON TO SECTIONS 25 & 36, WHICH WAS RECOVERED & REMONUMENTED ON THIS SURVEY.

### RECEIVED BY

Morrow County Surveyor  
 Date July 28, 2011  
 Rec'd By SKB  
 No. 1616-C



REGISTERED PROFESSIONAL LAND SURVEYOR

OREGON  
 NOVEMBER 29, 2010  
 JASON M. WELLS  
 54657PLS  
 RENEWS 6/30/12

"BASIS OF BEARINGS" A GEODETIC GPS OBSERVATION TAKEN 95' EAST OF THE NORTHWEST CORNER OF SECTION 36. FROM THIS POINT I ROTATE & SCALE THETA = -0.57636821', COMBINED SCALE & ELEVATION FACTOR = 1.00029894 TO OBTAIN THE TRUE BEARINGS & GROUND DISTANCES ON THIS SURVEY MAP.

WELLS SURVEYING  
 1 SW NYE AVENUE, SUITE B  
 P.O. BOX 1696  
 PENDLETON, OR 97801  
 PHONE: (541) 276-6362

PROJECT: JOERITMANNOND  
 RECORD OF SURVEY FOR:  
 GENEVA J. PALMER ESTATE

DATE: 07/11 DR. BY: JMW  
 CK. BY: WRW NO: 11-1333

LOCATED IN SECTION 36, T6S., R25E., W.M., MORROW COUNTY, OREGON.

1616