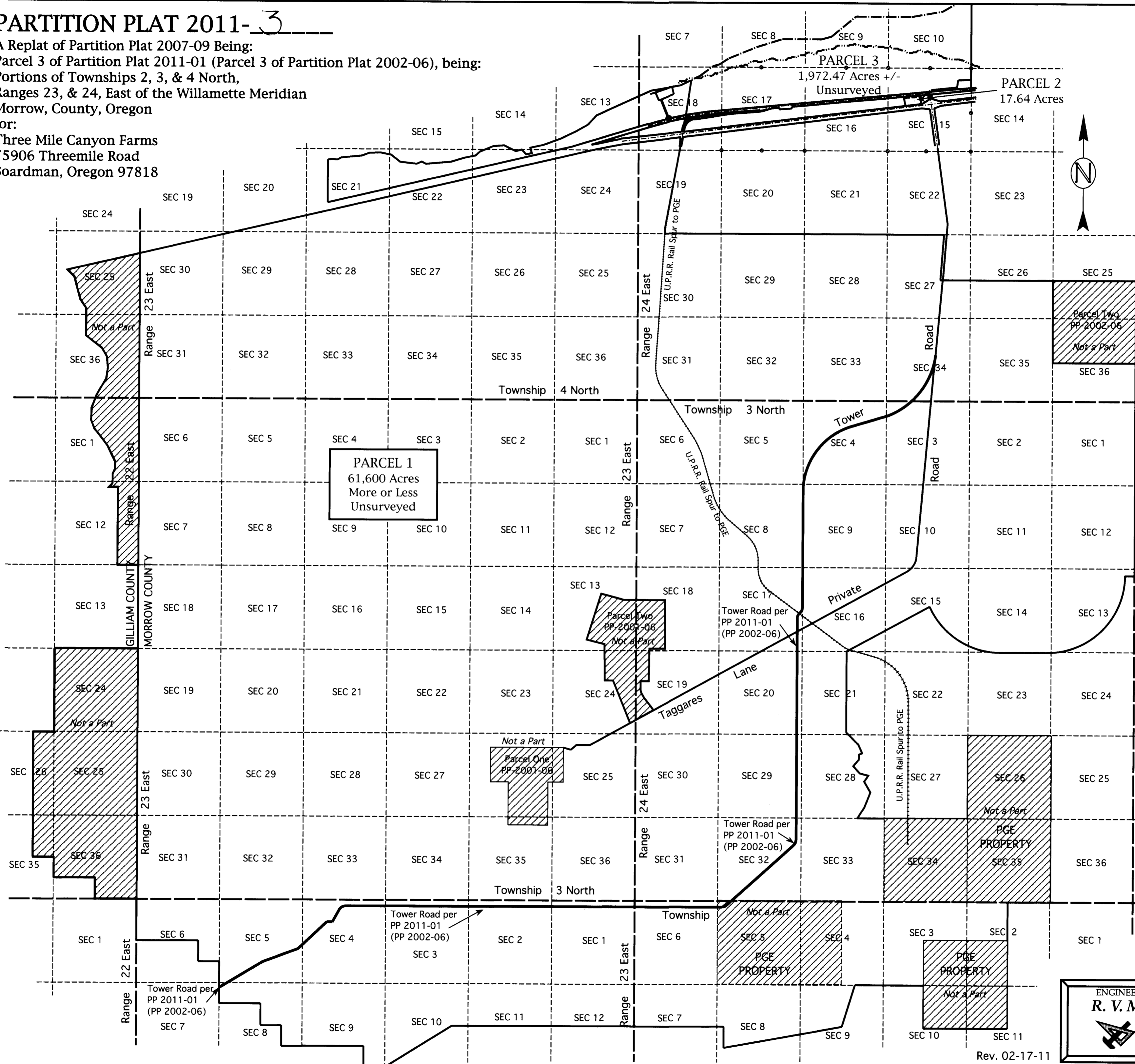


PARTITION PLAT 2011-3

A Replat of Partition Plat 2007-09 Being:
 Parcel 3 of Partition Plat 2011-01 (Parcel 3 of Partition Plat 2002-06), being:
 Portions of Townships 2, 3, & 4 North,
 Ranges 23, & 24, East of the Willamette Meridian
 Morrow, County, Oregon
 for:
 Three Mile Canyon Farms
 75906 Threemile Road
 Boardman, Oregon 97818



RECEIVED BY
 Morrow County Surveyor
 Date MARCH 14, 2011
 Rec'd By SKBC
 No. 1603-C

REGISTERED
 PROFESSIONAL
 LAND SURVEYOR

 OREGON
 RONALD V. MCKINNIS
 JAN. 23, 1990
 2431
 Expires 12-31-12

I do hereby certify that this is a true and exact copy of the Original Partition Plat as filed for Three Mile Canyon Farms in Morrow County.

SCALE 1" = 4000'
 FEBRUARY, 2011 Page 1 of 3

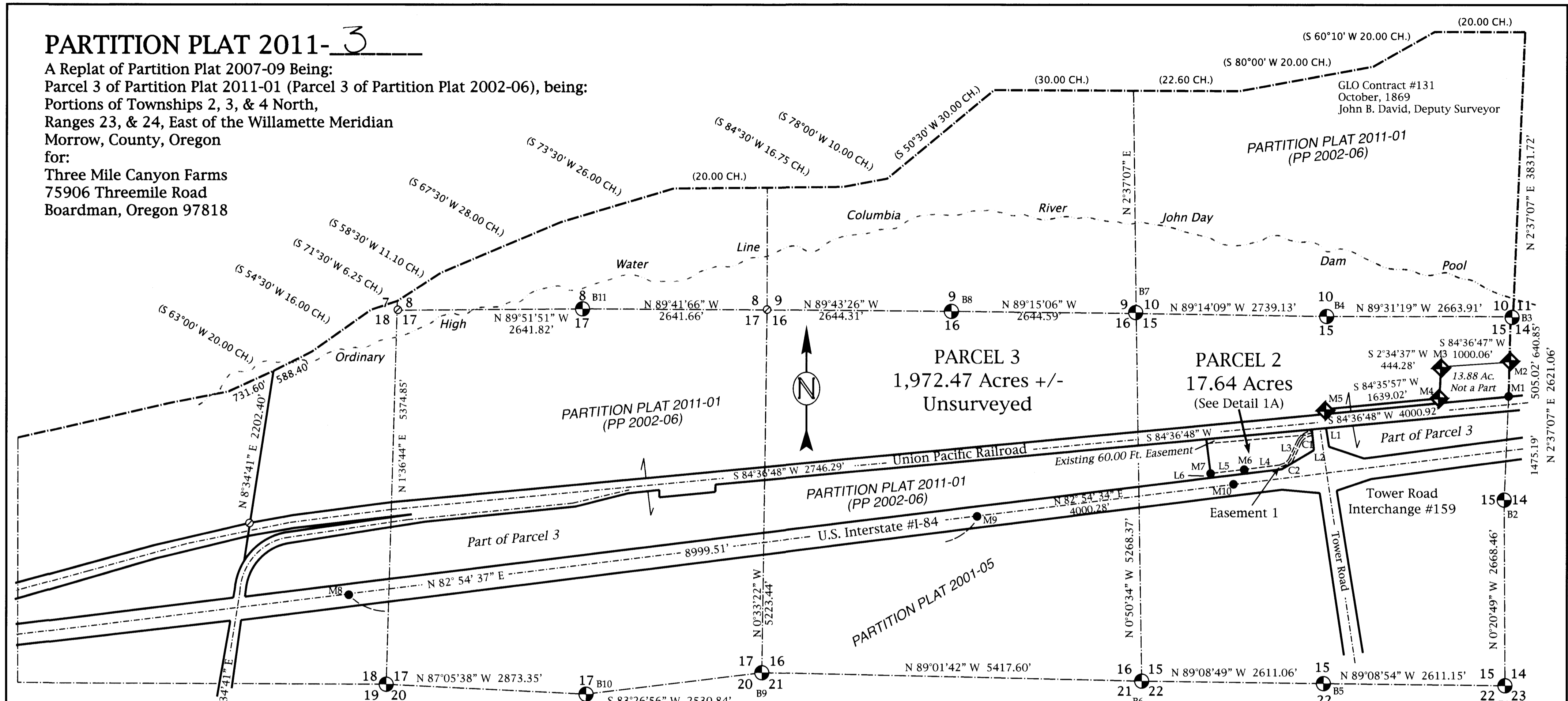
ENGINEERING - LAND SURVEYING - WATER RIGHTS
R. V. MCKINNIS ENGINEERING
 79980 Prindle Loop Road
 Hermiston, Oregon 97838
 (541) -567-2017

Rev. 02-17-11

1603

PARTITION PLAT 2011-3

A Replat of Partition Plat 2007-09 Being:
 Parcel 3 of Partition Plat 2011-01 (Parcel 3 of Partition Plat 2002-06), being:
 Portions of Townships 2, 3, & 4 North,
 Ranges 23, & 24, East of the Willamette Meridian
 Morrow, County, Oregon
 for:
 Three Mile Canyon Farms
 75906 Threemile Road
 Boardman, Oregon 97818



MONUMENT TABLE

Monument	Description	A Part of Survey #
B1	3" Brass Cap in Grout #1637	C-644-K-488
B2	5/8" Rebar W/ Plast. Cap #951	C-1266-E-1039
B3	Brass Cap Ref. in	C-644-K-488
B4	3" Alum. Cap #1637	C-644-K-488
B5	3" Brass Cap in Grout #1637	C-644-K-488
B6	3" Alum. Cap #1637	C-644-K-488
B7	ACOE 1" IP W/BS&W	ACOE JL-1956
B8	ACOE 1" IP W/BS&W	ACOE JL-1956
B9	ACOE 1" IP W/BS&W	ACOE JL-1956
B10	ACOE 1" IP W/BS&W	ACOE JL-1956
B11	ACOE 1" IP W/BS&W	ACOE JL-1956
B12	ACOE 1" IP W/BS&W	ACOE JL-1956
M1	5/8" Rebar W/ Ribbon	Unknown
M2	ACOE 3" Alum. Cap #1637	C-644-K-488
M3	ACOE 3" Alum. Cap #1637	C-644-K-488
M4	ACOE 3" Alum. Cap #1637	C-644-K-488
M5	ACOE 3" Alum. Cap #1637	C-644-K-488
M6	5/8" Rebar in Concrete	Unknown
M7	5/8" Rebar W/ Plastic Cap #976	Unknown
M8	ODOT Brass Cap1010+00.00 POT	None
M9	ODOT Brass Cap1100+00.00 POT	None
M10	ODOT Brass Cap1140+00.70 POT	None

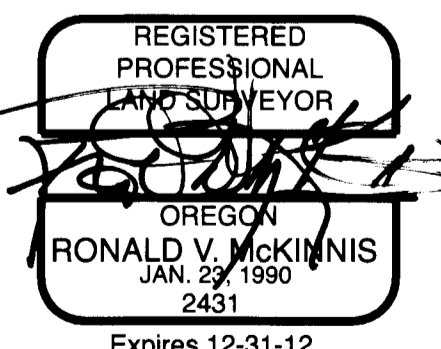
LINE TABLE

Line	Bearing	Distance
L1	S 07°08'43" E	30.00'
L2	S 84°36'48" W	100.00'
L3	S 24°36'48" W	193.12'
L4	S 82°54'34" W	915.09'
L5	N 82°54'15" E	500.02'
L6	S 07°05'26" E	59.94'

CURVE TABLE

Curve No.	Length	Radius	Δ Angle	CHORD	
				Length	Bearing
C1	314.16'	300.00'	60°00'00"	300.00'	S 54°36'48" W
C2	305.24'	300.00'	58°17'45"	292.24'	S 53°45'41" W

County Survey #'s Referenced
 C-148-K-+351 Buisman, 1978
 D-419-K-617 Krumbein, 1980
 C-198-K-376 Fraley, 1961
 C-644-K-489 Griffis, 1983
 C-1266-E-1039 Edwards, 2000
 C-1373-M-1373 McKinnis, 2002



I do hereby certify that this is a true and exact copy of the Original Partition Plat as filed for Three Mile Canyon Farms in Morrow County.

LEGEND

- ◆ FOUND SECTION MONUMENT
3" Aluminum Cap Corps of Engineers
- ⊙ FOUND SECTION MONUMENT
Corps Survey Tack & Washer or as noted
- FOUND MONUMENT as noted
- ⊖ CALCULATED POINT - Not Set
- PARTITION BOUNDARIES
- (000) GLO RECORD Bearing or Distance
- - - SECTION LINES
- - - Easement Line
- - - Center Line
- - - Shore Line

RECEIVED BY
 Morrow County Surveyor
 Date MAR 14, 2011
 Rec'd By SKB
 No. 1603-C

SCALE 1" = 1000'
 February, 2011 Page 2 of 3

ENGINEERING - LAND SURVEYING - WATER RIGHTS
R. V. McKINNIS ENGINEERING
 79980 Prindle Loop Road
 Hermiston, Oregon 97838
 (541) -567-2017

1603