

LAND PARTITION NO. 2010-8

SITUATED IN SECTIONS 1 AND 2, TOWNSHIP 1 SOUTH, RANGE 24 EAST, W.M. MORROW COUNTY, OREGON. DECEMBER, 2009.

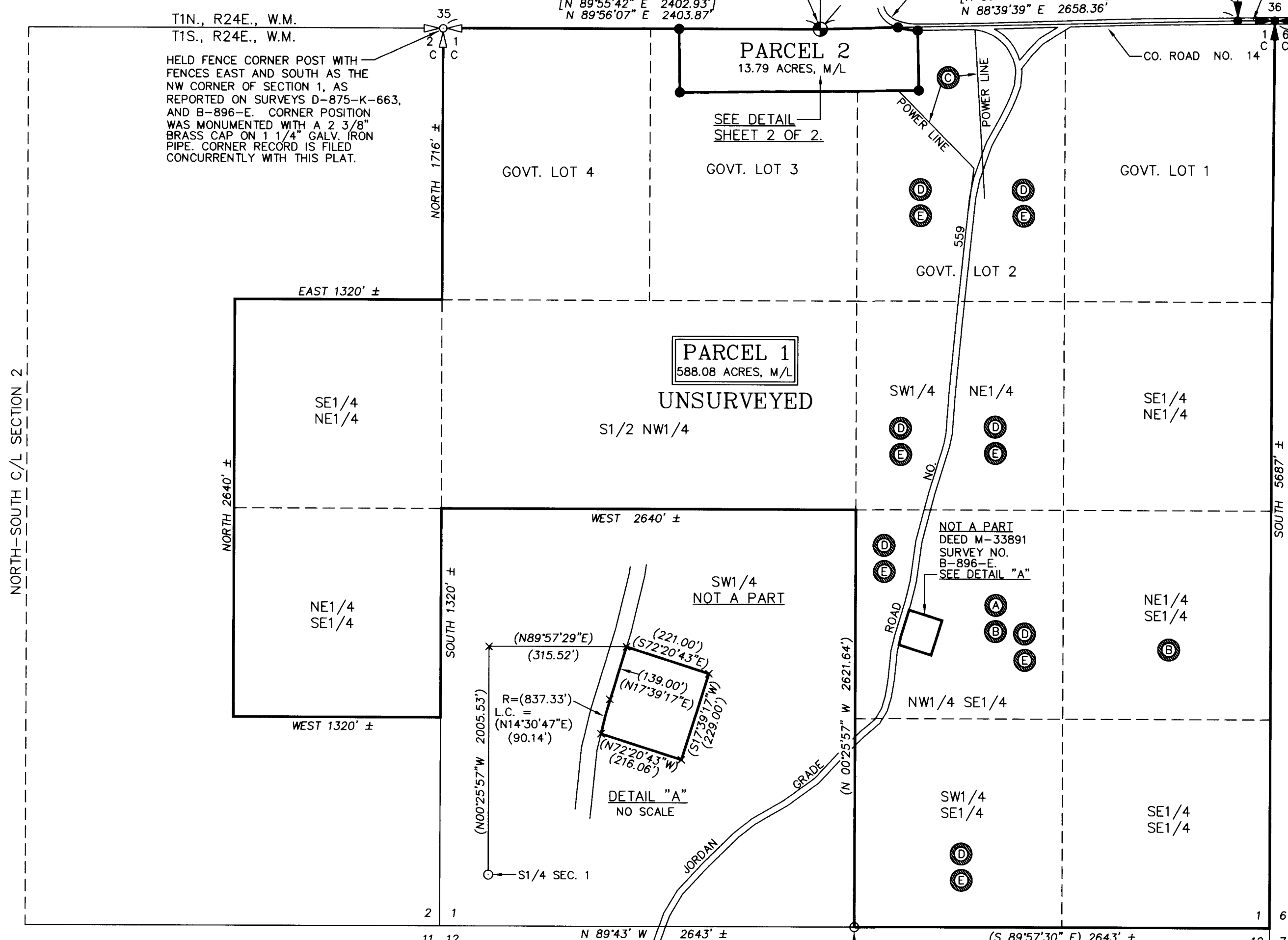


SCALE: 1 INCH=600 FEET  
0 300 600 1200  
BASIS OF BEARINGS AS NOTED.

SW CORNER OF PARCEL 1 OF PARTITION PLAT 1993-3. FOUND A 5/8" REBAR WITH YELLOW PLASTIC CAP MARKED "W.R. WELLS, PLS 1106".

PARCEL 1 PARTITION PLAT NO. 1993-3.

T1N., R24E., W.M.  
T1S., R24E., W.M.  
HELD FENCE CORNER POST WITH FENCES EAST AND SOUTH AS THE NW CORNER OF SECTION 1, AS REPORTED ON SURVEYS D-875-K-663, AND B-896-E. CORNER POSITION WAS MONUMENTED WITH A 2 3/8" BRASS CAP ON 1 1/4" GALV. IRON PIPE. CORNER RECORD IS FILED CONCURRENTLY WITH THIS PLAT.



EASEMENT NOTES:

- (A) EASEMENT FOR ELECTRICAL TRANSMISSION AND DISTRIBUTION LINES ACROSS THE NW1/4 OF THE SE1/4 SECTION 1, M-33892, MORROW COUNTY DEED RECORDS. SURVEYORS NOTE: THIS IS A BLANKET TYPE EASEMENT ACROSS A PORTION OF UNSURVEYED PARCEL 1 AND IS NOTED BUT NOT SHOWN. GRANTEE: COLUMBIA BASIN ELECTRIC COOPERATIVE, INC..
- (B) EASEMENT FOR ELECTRICAL TRANSMISSION AND DISTRIBUTION LINES ACROSS THE N1/2 OF THE SE1/4 SECTION 1, M-59441, MORROW COUNTY DEED RECORDS. SURVEYORS NOTE: THIS IS A BLANKET TYPE EASEMENT ACROSS A PORTION OF UNSURVEYED PARCEL 1 AND IS NOTED BUT NOT SHOWN. GRANTEE: COLUMBIA BASIN ELECTRIC COOPERATIVE, INC..
- (C) EASEMENT FOR ELECTRICAL TRANSMISSION AND DISTRIBUTION LINES ACROSS THE NW1/4 OF THE NE1/4 OF SECTION 1, WEST OF COUNTY ROAD PER M-24749, MORROW COUNTY DEED RECORDS. SURVEYORS NOTE: THIS IS A BLANKET TYPE EASEMENT. EXISTING POWER POLE LINE LOCATIONS ARE SHOWN ON DETAIL FOR SURVEYED PARCEL 2 ON SHEET 2 OF 2. GRANTEE: COLUMBIA BASIN ELECTRIC COOPERATIVE, INC..
- (D) EASEMENT FOR ELECTRICAL TRANSMISSION AND DISTRIBUTION LINES ACROSS THE W1/2 OF THE SE1/4 AND THE W1/2 OF THE NE1/4 SECTION 1, BOOK 52, PAGE 207, MORROW COUNTY DEED RECORDS. SURVEYORS NOTE: THIS IS A BLANKET TYPE EASEMENT. EXISTING POWER POLE LINE LOCATIONS ARE SHOWN ON DETAIL FOR SURVEYED PARCEL 2 ON SHEET 2 OF 2. GRANTEE: PACIFIC POWER AND LIGHT CO., ASSIGNED TO COLUMBIA BASIN ELECTRIC, INC., IN BOOK 70, PAGE 533, MORROW COUNTY DEED RECORDS.
- (E) EASEMENT FOR ELECTRICAL TRANSMISSION AND DISTRIBUTION LINES ACROSS THE W1/2 OF THE E1/2 SECTION 1, M-8728, MORROW COUNTY DEED RECORDS. SURVEYORS NOTE: THIS IS A BLANKET TYPE EASEMENT. EXISTING POLE LINE LOCATIONS ARE SHOWN ON DETAIL FOR SURVEYED PARCEL 2 ON SHEET 2 OF 2. GRANTEE: COLUMBIA BASIN ELECTRIC COOPERATIVE, INC..

LEGEND

- SECTION CORNER REESTABLISHED AS NOTED.
  - FOUND "P.K." NAILS 1 1/2" TO 3" BELOW ROAD PAVEMENT FOR THESE CORNERS. 2 1/2" BRASS CAPS ON 1 1/2" GALV. IRON PIPE MONUMENTS ARE REPORTED AT THESE CORNERS ON SURVEY NO. D-875-K-663. SURVEY NO. B-896-E REPORTS RECOVERY OF A BRASS CAP PER KRUMBEIN, 1988, FOR THE CLOSING CORNER COMMON TO SECTIONS 1 & 6, T1S., RANGES 24 & 25 EAST. THE "P.K." NAIL MONUMENTS FOUND WERE REMONUMENTED WITH 2 3/8" BRASS CAP MONUMENTS ON 1" BY 30" GALVANIZED IRON PIPES. SEE CORNER RECORDS FILED SEPARATELY.
  - FOUND SECTION CORNER MONUMENT, A 2 1/2" BRASS CAP ON 1 1/4" GALV. IRON PIPE PER SURVEY NO. D-875-K-663.
  - MONUMENT OF RECORD AS NOTED.
  - SET 5/8" BY 30" REBAR WITH 1 1/4" RED PLASTIC CAP MARKED "OR PLS 1106 WA PLS 17372".
  - (XOX) - RECORD DIMENSION FROM SURVEY NO. B-896-B.
  - [XOX] - RECORD DIMENSION FROM SURVEY NO. D-875-K-663.
  - (XOX)R - RECORD DIMENSION FROM MORROW COUNTY PARTITION PLAT NO. 1993-3.
- NOTE: CHAIN UNITS FROM GLO SURVEYS ARE CONVERTED TO FEET IN ANNOTATING THE EXTERIOR BOUNDARY OR UNSURVEYED PARCEL 1.

REGISTERED PROFESSIONAL LAND SURVEYOR  
*Will R. Wells*  
OREGON  
JULY 22, 1977  
WILLIAM R. WELLS  
1106  
RENEWS 9/30/10

I CERTIFY THAT THIS IS A TRUE AND EXACT COPY OF LAND PARTITION PLAT NO. 2010-8  
*Will R. Wells*  
WILLIAM R. WELLS, PLS

RECORDED BY  
Morrow County Surveyors  
Date *JAN 21 2010*  
Rec'd By *SKB*  
*1566-C*

WELLS SURVEYING  
2602 N.E. RIVERSIDE PLACE  
P.O. BOX 1696  
PENDLETON, OR 97801  
PHONE: (541) 276-6362

PROJECT: \KENNELSONROTSI  
PARTITION PLAT FOR:  
KEN NELSON  
LOCATED IN SECTIONS 1 & 2,  
T1S., R24E., W.M.,  
MORROW COUNTY, OREGON

1566

SITUATED IN SECTIONS 1 AND 2, TOWNSHIP 1 SOUTH, RANGE 24 EAST, W.M. MORROW COUNTY, OREGON. DECEMBER, 2009.

**OWNERS DECLARATION**

KENNETH E. NELSON, SUCCESSOR TRUSTEE OF THE ALFRED H. NELSON JR. FAMILY TRUST, AS TO AN UNDIVIDED ONE-HALF INTEREST AND HELEN E. NELSON, AS TO AN UNDIVIDED ONE-HALF INTEREST, DO HEREBY ACKNOWLEDGE THIS PARTITION PLAT WAS PREPARED WITH OUR KNOWLEDGE AND CONSENT, AND PARTITIONED IN ACCORDANCE WITH ORS CHAPTER 92, AS REVISED, AND APPLICABLE PORTIONS OF THE MORROW COUNTY SUBDIVISION ORDINANCE.

*Kenneth E. Nelson Successor Trustee of the Alfred H. Nelson Family Trust*

KENNETH E. NELSON, SUCCESSOR TRUSTEE OF THE ALFRED H. NELSON JR. FAMILY TRUST

**ACKNOWLEDGMENT**

STATE OF ARIZONA SS  
COUNTY OF Yuma

THIS INSTRUMENT WAS ACKNOWLEDGED BEFORE ME THIS 18<sup>th</sup> DAY

OF December, 2009

BY KENNETH E. NELSON

*Kennedy E. Reimerl*  
NOTARY PUBLIC FOR THE STATE OF ARIZONA

MY COMMISSION EXPIRES 5-18-2013

COMMISSION NUMBER 294430

*Helen E. Nelson by Kenneth E. Nelson her Attorney in fact*

HELEN E. NELSON, BY KENNETH E. NELSON HER ATTORNEY IN FACT

**ACKNOWLEDGMENT**

STATE OF ARIZONA SS  
COUNTY OF Yuma

THIS INSTRUMENT WAS ACKNOWLEDGED BEFORE ME THIS 18<sup>th</sup> DAY

OF December, 2009

BY KENNETH E. NELSON, AS ATTORNEY IN FACT FOR HELEN E. NELSON

*Kennedy E. Reimerl*  
NOTARY PUBLIC FOR THE STATE OF ARIZONA

MY COMMISSION EXPIRES 5-18-2013

COMMISSION NUMBER 294430

**SURVEYORS CERTIFICATE**

I USED MONUMENTS ESTABLISHED AND IDENTIFIED ON MORROW COUNTY SURVEY NO. D-875-K-663 AND MORROW COUNTY PARTITION PLAT NO. 1993-3 AS THE BASIS OF CONTROL FOR THIS PARTITION PLAT SURVEY. NOTE THAT CERTAIN MONUMENTS SHOWN AS BRASS CAPS ON SURVEY NO. D-875-K-663 WERE RECOVERED AS "P.K." NAILS. THE "P.K." NAIL MONUMENTS WERE REMONUMENTED WITH 2 3/8" BRASS CAPS ON 1" BY 30" GALVANIZED IRON PIPES. SEE CORNER RECORDS FILED SEPARATELY.

I CERTIFY THAT I HAVE CORRECTLY SURVEYED AND MONUMENTED PARCEL 2 OF THIS PARTITION PLAT IN ACCORDANCE WITH THE ORS CHAPTER 92, AS REVISED, AND APPLICABLE PORTIONS OF THE MORROW COUNTY SUBDIVISION ORDINANCE. MONUMENTS WERE RECOVERED OR ESTABLISHED AS NOTED ON THIS PARTITION PLAT. PARCEL 1, BEING OVER 80 ACRES IN AREA, IS UNSURVEYED, AS NOTED.

THE SURVEY WAS MADE WITH A TWO PERSON CREW USING A TRIMBLE GEODETIC 5700 G.P.S. SYSTEM OPERATED IN REAL TIME KINEMATIC MODE. NEW MONUMENTS WERE ESTABLISHED BY G.P.S. REAL TIME METHODS AND VERIFIED BY SEPARATE OBSERVATIONS.

THE RECORD DESCRIPTION DOCUMENT USED IN PREPARATION OF THIS PARTITION PLAT IS BARGAIN AND SALE DEED RECORDED AS M-574, DEED RECORDS OF MORROW COUNTY, OREGON.

**REAL PROPERTY DESCRIPTION:**

THE SOUTHEAST QUARTER OF THE NORTHEAST QUARTER AND THE NORTHEAST QUARTER OF THE SOUTHEAST QUARTER OF SECTION 2, TOWNSHIP 1 SOUTH, RANGE 24 EAST, W.M., MORROW COUNTY, OREGON.

THE NORTH HALF AND THE SOUTHEAST QUARTER OF SECTION 1, TOWNSHIP 1 SOUTH, RANGE 24 EAST, W.M., MORROW COUNTY, OREGON.

EXCEPTING THEREFROM, THAT PORTION OF THE SOUTHEAST QUARTER OF SECTION 1, TOWNSHIP 1 SOUTH, RANGE 24 EAST, W.M., CONVEYED TO COLUMBIA BASIN ELECTRIC COOPERATIVE, INC., IN M-33891, DEED RECORDS OF MORROW COUNTY.

SUBJECT TO THE RIGHT-OF-WAYS OF COUNTY ROADS AND EASEMENTS OF RECORD.

**APPROVALS**

APPROVED THIS DAY 23 OF December, 2009

*John L. Long*  
MORROW COUNTY SURVEYOR

APPROVED THIS 23<sup>rd</sup> DAY OF December, 2009

*Arthur B. Lane*  
MORROW COUNTY PLANNING DIRECTOR

ALL AD VALOREM AND SPECIAL ASSESSMENTS DUE PURSUANT TO LAW HAVE BEEN ASSESSED AND COLLECTED.

*Les Paul*  
MORROW COUNTY ASSESSOR

DATE: December 23, 2009

*Les Paul*  
MORROW COUNTY TAX COLLECTOR

DATE: December 23, 2009

STATE OF OREGON SS  
COUNTY OF MORROW

I HEREBY CERTIFY THAT THIS PLAT WAS RECEIVED ON AND FILED FOR

RECORD ON THIS 23<sup>rd</sup> DAY OF December, 2009

AT 9:31 O'CLOCK Am AS FILE NO. 2009-25224

MORROW COUNTY CLERK

BY: DEPUTY

**LEGEND**

- SECTION CORNER REESTABLISHED AS NOTED.

- FOUND "P.K." NAILS 1 1/2" TO 3" BELOW ROAD PAVEMENT SURFACE FOR THESE CORNERS. 2 1/2" BRASS CAPS ON 1 1/2" GALV. IRON PIPE MONUMENTS ARE REPORTED FOR THESE CORNERS ON SURVEY D-875-K-663. SURVEY NO. B-896-E REPORTS RECOVERY OF A BRASS CAP PER KRUMBEIN, 1988, FOR THE CLOSING CORNER COMMON TO SECTIONS 1 & 6, T1S., RANGES 24 & 25 EAST. THE "P.K." NAIL MONUMENTS FOUND WERE REMONUMENTED WITH 2 3/8" BRASS CAP MONUMENTS ON 1" BY 30" GALVANIZED IRON PIPES. SEE CORNER RECORDS FILED SEPARATELY.

- FOUND SECTION CORNER MONUMENT, A 2 1/2" BRASS CAP ON 1 1/4" GALV. IRON PIPE PER SURVEY NO. D-875-K-663.

- CALCULATED POINT ONLY. NOTHING SET OR FOUND.

- SET 5/8" BY 30" REBAR WITH 1 1/4" RED PLASTIC CAP MARKED "OR PLS 1106 WA PLS 17372".

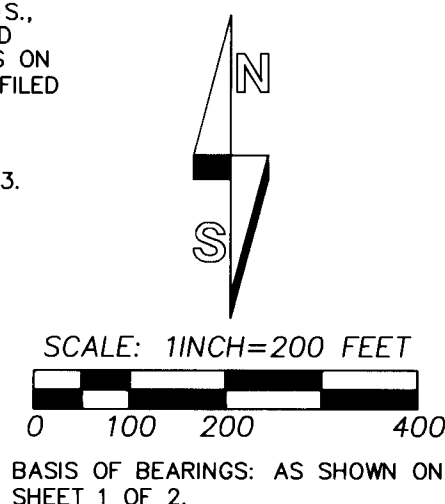
(XOX) - RECORD DIMENSION FROM SURVEY NO. B-896-B.

[XOX] - RECORD DIMENSION FROM SURVEY NO. D-875-K-663.

- INDICATES OVERHEAD POWER LINE.

- INDICATES BARBED WIRE FENCE.

- INDICATES POLE.



**CURVE TABLE**

NO	DELTA	RADIUS	LENGTH	CHORD	CHORD BRG
C1	26° 19' 06"	424.00'	194.76'	193.05'	N 81° 50' 43" W
C2	16° 31' 50"	444.00'	128.10'	127.66'	N 80° 59' 50" W

**LINE TABLE**

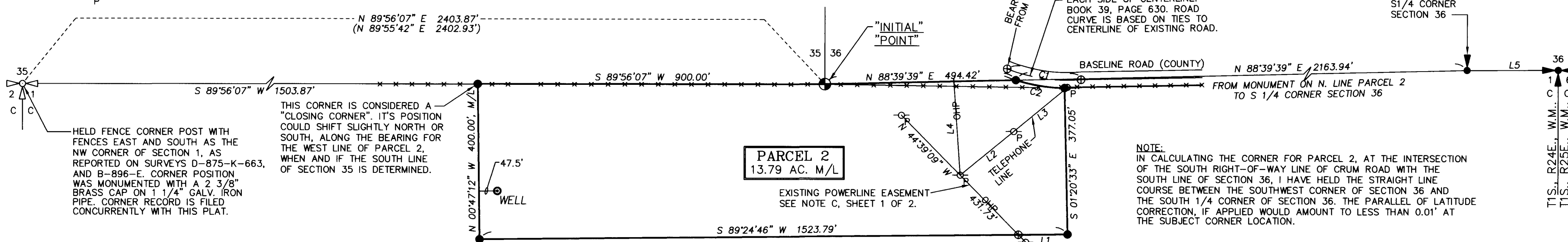
NO.	BEARING	DISTANCE
L1	S 89° 24' 46" W	127.37'
L2	N 50° 42' 53" E	178.67'
L3	N 50° 33' 07" E	169.94'
L4	N 04° 03' 21" W	242.21'
L5	N 89° 45' 55" E	236.45'

REGISTERED PROFESSIONAL LAND SURVEYOR

*Will R. Wells*  
WILLIAM R. WELLS, PLS

*Will R. Wells*

OREGON  
JULY 22, 1977  
WILLIAM R. WELLS  
1106  
RENEWS 6/30/10



**DETAIL OF PARCEL 2**

I CERTIFY THAT THIS IS A TRUE AND EXACT COPY OF LAND PARTITION PLAT NO. 2010--

*Will R. Wells*  
WILLIAM R. WELLS, PLS

<b>WELLS SURVEYING</b> 2602 N.E. RIVERSIDE PLACE P.O. BOX 1696 PENDLETON, OR 97801 PHONE: (541) 276-6362		PROJECT: \KENNELSONR0TS2  PARTITION PLAT FOR:  <b>KEN NELSON</b>  LOCATED IN SECTIONS 1 & 2, T1S., R24E., W.M., MORROW COUNTY, OREGON
DATE: 12/09	DR. BY: JMW	
CK. BY: WRW	NO: 08-1203	

RECEIVED BY  
Morrow County Survey  
Date JAN 21 2010  
Rec'd By SKB  
No. 1566-C

1566