

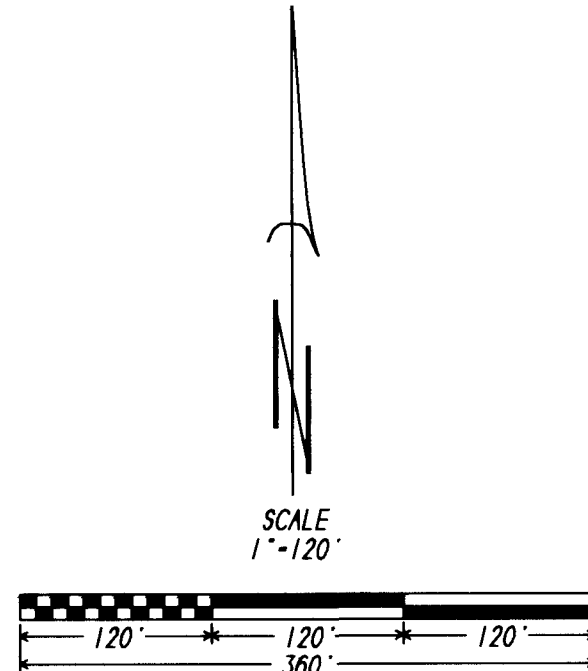
RETRACEMENT SURVEY OF MORROW COUNTY, OREGON PARTITION PLAT
2002-5 AS LOCATED IN THE SOUTHEAST QUARTER OF SECTION 27, TOWNSHIP
1 SOUTH, RANGE 25 EAST OF THE WILLAMETTE MERIDIAN.

SURVEYORS NARRATIVE:

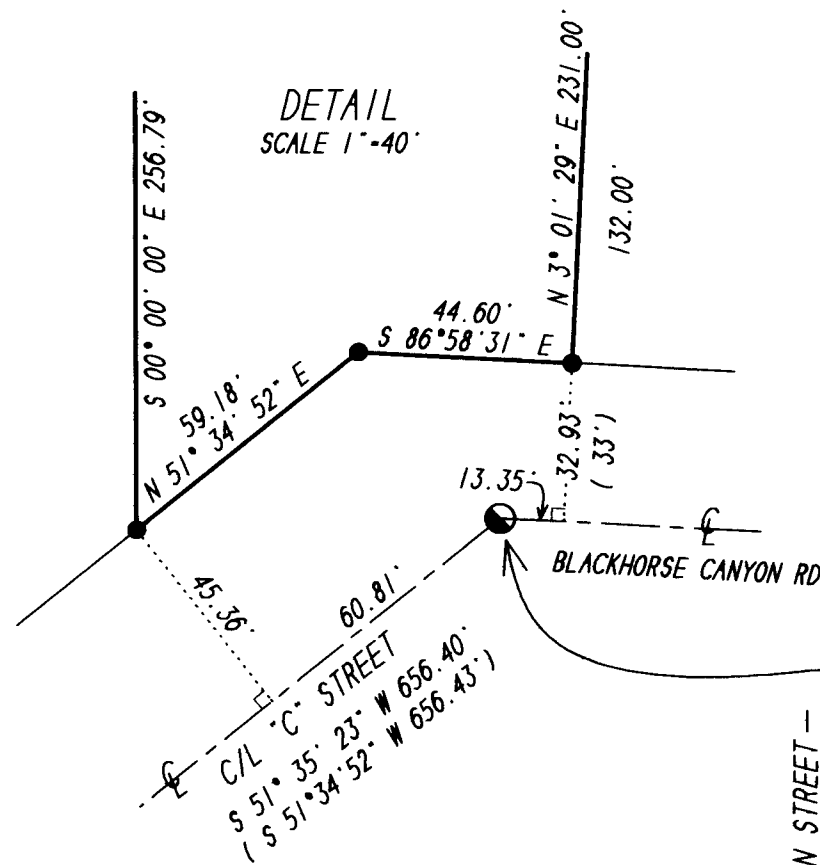
THE PURPOSE OF THIS SURVEY WAS TO REPLACE THE MISSING MONUMENT FOR THE NORTHWEST CORNER OF PARCEL 3 OF MORROW COUNTY, OREGON PARTITION PLAT 2002-5, SO A FENCE COULD BE BUILT ON THE PROPERTY LINE. I WAS UNABLE TO LOCATE ANY MONUMENTS WHICH WOULD ALLOW FOR A SIMPLE SETUP, BACKSIGHT AND TURN TO THE MISSING MONUMENT AND REPLACE IT. I FOUND NONE OF THE 7 MONUMENTS WHICH I RESET FROM A FULL RETRACEMENT OF THE PLAT. I WAS SURPRISED TO FIND THE MONUMENT SHOWN AS OUT OF POSITION NEAR THE SOUTHWEST OF PARCEL 3. BECAUSE I HAD UNSUCCESSFULLY SEARCHED FOR IT BEFORE, IT APPEARS THIS MONUMENT WAS RESET WITHOUT A RECORD SURVEY USING THE MONUMENT THEN LOCATED BUT I FOUND MISSING ON THE NORTHERLY RIGHT OF WAY LINES OF "C" STREET AND BLACKHORSE CANYON ROAD AND BEING THE INTERSECTION POINT ON THE NORTHERLY LINES OF THOSE STREETS AND ROADS WHICH IS ALSO AN ANGLE POINT ON THE MOST SOUTHERLY SOUTH LINE OF PARCEL 2. I REJECTED THIS MONUMENT AND SET A NEW MONUMENT AT THE CORRECT LOCATION.

I RETRACED THIS PARTITION PLAT USING LOCUS SINGLE FREQUENCY RECEIVERS AND COLLECTED DATA ON ALL SURVIVING MONUMENTS. AND AFTER REDUCING TO GROUND DISTANCES AND ROTATING THE GPS DATA TO MATCH THE PLATTED BEARING FROM THE BRASS CAP QUARTER CORNER SHOWN AND THE MONUMENT AT THE SOUTHEAST CORNER OF PARCEL 3 THAT DATA REVEALED THAT THE ORIGINAL SURVEY WAS VERY GOOD WORK AND ALL SURVIVING MONUMENTS MATCHED THE RECORD VERY WELL. AS AN EVALUATION TOOL I RAN A RECORD TRAVERSE USING THE PLATTED BEARINGS AND DISTANCES FROM THE FOUND MONUMENT AT THE SOUTHEAST CORNER OF PARCEL 3. CLOCKWISE TO THE FOUND MONUMENT AT AN ANGLE POINT ON THE WEST LINE OF PARCEL 2. THIS MONUMENT IS SHOWN AS FOUND. THE CLOSURE WAS WITHIN A HUNDREDTH. I HELD THE RECORD BEARINGS AND DISTANCES AS GOOD AND THEN REPLACED THE MISSING MONUMENTS AS SHOWN USING THAT RECORD DATA.

THE PLAT SHOWS A MONUMENT AT "C" STREET AND MAIN WHICH I TIED. A MONUMENT AT THE CENTERLINE INTERSECTION WITH BLACKHORSE CANYON ROAD WHICH I ALSO TIED AND A MONUMENT AT THE CENTERLINE OF BLACKHORSE CANYON ROAD AND THE EAST SECTION LINE OF SECTION 27 WHICH I DID NOT TIE. THERE ARE NO DIRECT TIES NOTED ON THE PLAT BETWEEN THE PLATTED AREA AND THESE CENTERLINE MONUMENTS. I SHOW THE RELATIONSHIP BETWEEN THE PLAT AND THESE CENTERLINE MONUMENTS IN THE DETAIL. ON THE PLAT, I MADE THOSE TIES AND SHOW THE RELATIONSHIP IN THE DETAIL.



- LEGEND:
- SET 5/8" X 30" STEEL REBAR WITH PLASTIC CAP MARKED LS 2850
 - FOUND 5/8" STEEL REBAR WITH PLASTIC CAP MARKED LS 2817 ROGERS SURVEYING
 - ⊗ FOUND AND REJECTED 5/8" STEEL REBAR WITH PLASTIC CAP STAMPED 2817 ROGERS SURVEYING.
 - ⊕ FOUND BRASS CAP, QUARTER CORNER COMMON TO SECTIONS 27/26.
 - FOUND MONUMENTS AS NOTED.
- (000) RECORD MORROW COUNTY PARTITION PLAT 2002-5.



FND. BRASS CAP SET BY KRUMBEIN FOR THE CITY OF LEXINGTON.

FND. BRASS CAP SET BY KRUMBEIN FOR THE CITY OF LEXINGTON.

LINE TABLE

MEASURED	RECORD
① N 51° 34' 52" E 59.18'	(N 51° 34' 52" E 59.18')
② S 86° 58' 40" E 44.60'	(S 86° 58' 31" E 44.60')

RECEIVED BY
Morrow County Surveyors
Date SEPT 17, 2008
Rec'd By SKB
No. 1533-C

5/8" X 30" REBAR WITH ALUM CAP STAMPED LS 933. MONUMENT IS IN PLACE DETERMINED BY PIN FINDER REACTION. COVERED BY ASPHALT. DID NOT UNCOVER.

REGISTERED PROFESSIONAL LAND SURVEYOR
John A. Copcock
OREGON
JANUARY 20 1998
JUDSON L. COPPOCK
2850
RENEWAL DATE: DEC. 31, 2009

RETRACEMENT SURVEY FOR:
DALE WILSON
PO BOX 503
LEXINGTON, OR 97839
COPPOCK SURVEYING 11 SEPT. 2009
P.O. BOX 495 541-676-8750
HEPPNER, OR 97836 FAX 676-8753
Job No. 0908507

THIS SURVEY WAS PERFORMED USING LOCUS SINGLE FREQUENCY STATIC GPS RECEIVERS. HAVING A STANDARD ERROR OF +/- 5MM + 1 PPM TIMES THE BASE LENGTH. AND A NIKON DTM-430 TOTAL STATION HAVING STANDARD ERRORS OF +/- 00"00"03" ANGULAR AND +/- 3MM + 3 PPM TIMES THE DISTANCE. ALL MONUMENTS SHOWN AS FOUND WERE VISITED DURING THE COURSE OF THIS SURVEY.

ALL BEARINGS AND DISTANCES SHOWN AS MEASURED ARE TRUE.

FND 2 1/2" BRASS CAP. ONE QUARTER CORNER COMMON TO SECTIONS 27 AND 26. TOWNSHIP 1 SOUTH, RANGE 25 EAST OF THE WILLAMETTE MERIDIAN, MORROW COUNTY, OREGON.