

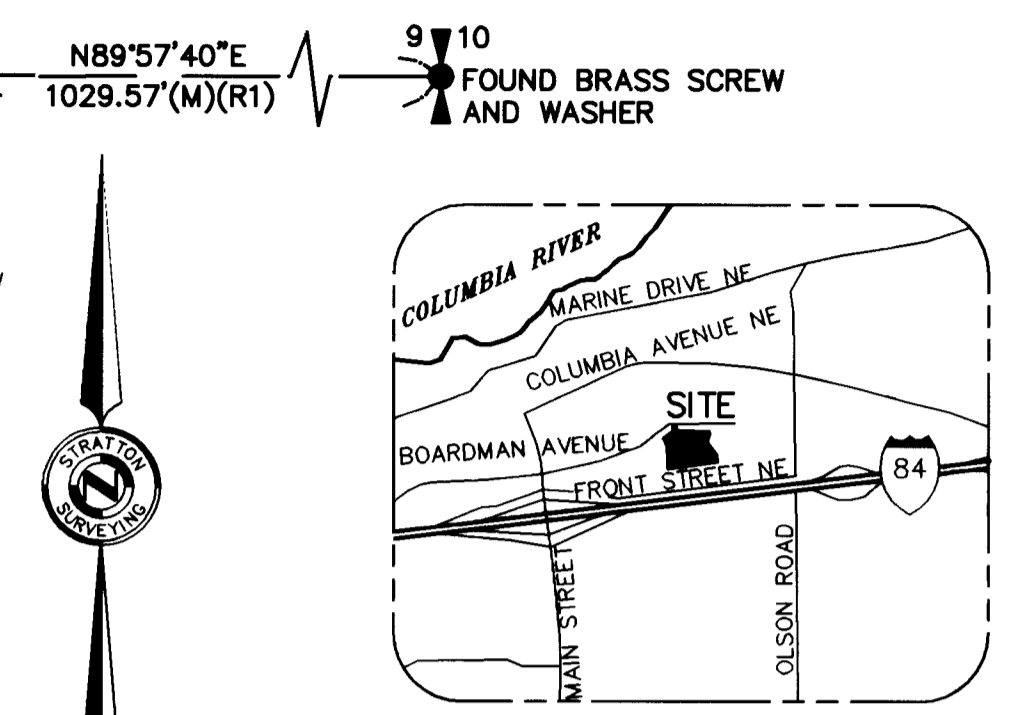
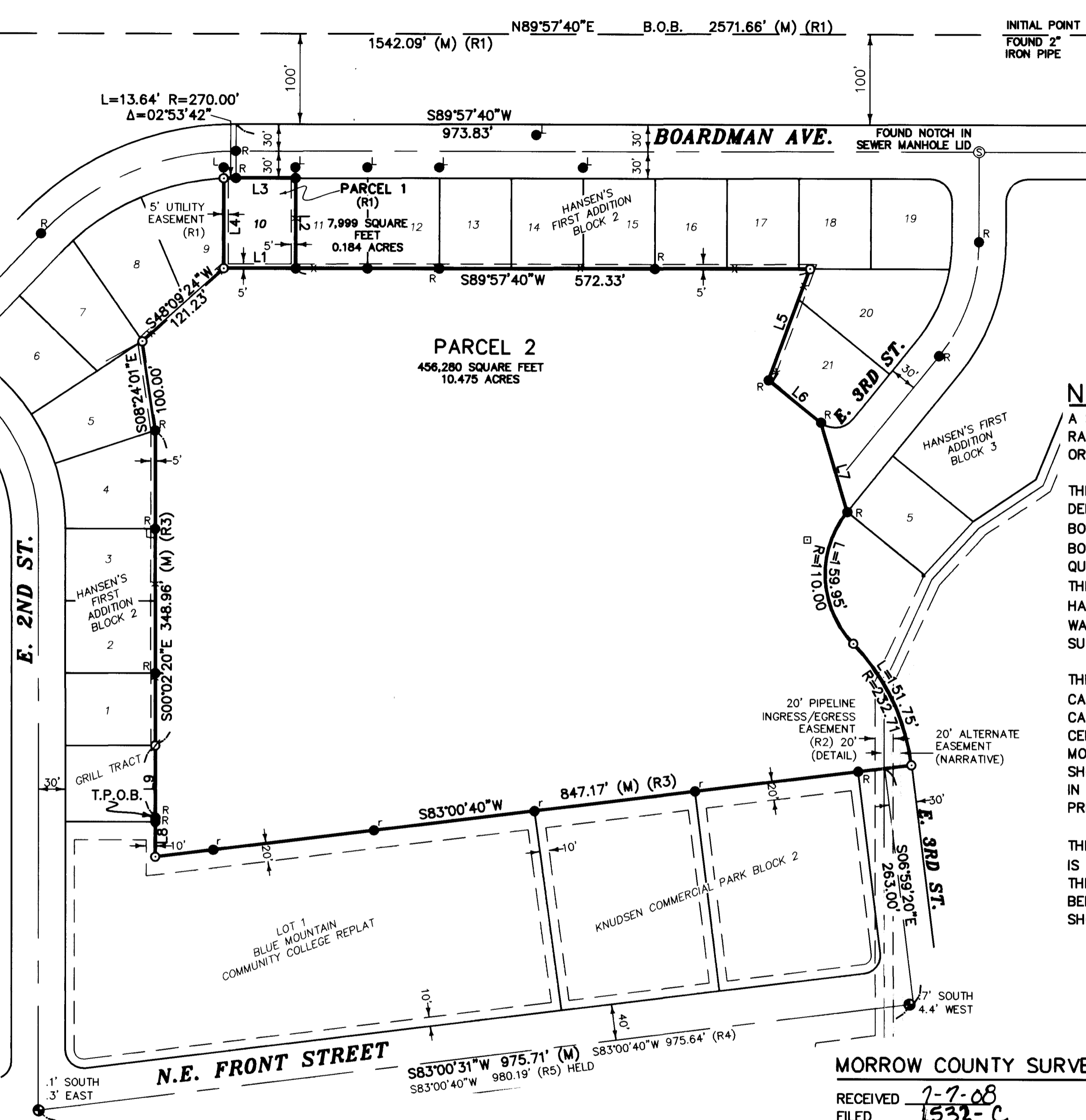
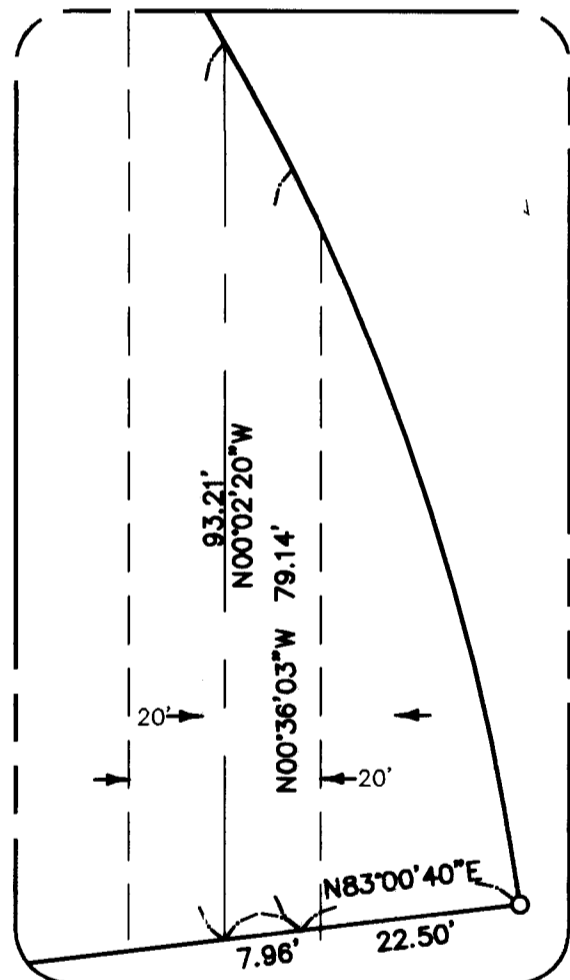
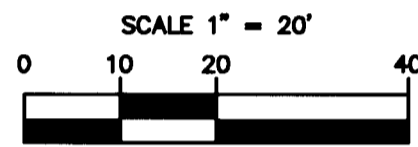
CERTIFICATE OF SURVEY

A PORTION OF THE S.E. 1/4 OF SEC. 9, T. 4 N., R. 25 E., W.M. CITY OF BOARDMAN, MORROW COUNTY, OREGON



LINE	LENGTH	BEARING
L1	80.00'	S89°57'40"W
L2	100.00'	N00°02'20"W
L3	66.36'	S89°57'40"W
L4	99.66'	S00°02'20"E
L5	131.20'	N20°30'13"E
L6	75.00'	N51°02'20"W
L7	103.15'	N16°31'45"W
L8	43.26'	N00°02'40"W
L9	79.98'	N00°02'20"W

EASEMENT DETAIL



NARRATIVE

A SURVEY IN THE SOUTHEAST QUARTER OF SECTION 9, TOWNSHIP 4 NORTH, RANGE 25 EAST, WILLAMETTE MERIDIAN, CITY OF BOARDMAN, MORROW COUNTY, OREGON.

THIS SURVEY WAS PERFORMED AT THE REQUEST OF FORTERRA, LLC TO DELINEATE THE BOUNDARIES OF HEREON SHOWN PARCELS 1 AND 2. THE BOUNDARY OF PARCEL 1 WAS CALCULATED PER "HANSEN'S FIRST ADDITION TO BOARDMAN" (R1). RECOVERED MONUMENTATION AT EITHER END OF THE EAST QUARTER LINE OF SAID SECTION 9 IS HELD FOR THE BASIS OF BEARING FOR THIS SURVEY AND SHOWN HEREON. IN ADDITION, THE "INITIAL POINT" OF HANSEN'S FIRST ADDITION WAS RECOVERED AND SHOWN HEREON. PARCEL 2 WAS CALCULATED PER TITLE REPORT DESCRIPTION (R3), AND ORIGINAL SUBDIVISION MONUMENTATION WAS RECOVERED AND SHOWN HEREON.

THE CENTERLINE OF FRONT STREET BETWEEN EAST 2ND AND 3RD STREET WAS CALCULATED PER "KNUDSEN COMMERCIAL PARK" (R5), AND THESE CALCULATED POSITIONS WERE HELD FOR BEARING AND DISTANCE. RECOVERED CENTERLINE MONUMENTS ARE SHOWN HEREON AND WERE NOT ACCEPTED. MONUMENTS RECOVERED ALONG THE NORTH BOUNDARY OF SAID R5 ARE SHOWN HEREON AND SUPPORT THE CALCULATED POSITION OF FRONT STREET. IN ADDITION, DISCREPANCIES OF THE FRONT STREET CENTERLINE BETWEEN TWO PREVIOUS SURVEYS AS WELL AS THIS SURVEY ARE SHOWN HEREON.

THE TWENTY FOOT PIPELINE INGRESS/EGRESS EASEMENT (R2) SHOWN HEREON IS CALCULATED PER SAID R2. AN "ALTERNATE" EASEMENT IS SHOWN HEREON; THIS DIFFERS FROM THE RECORD AS ALL COURSES OF THIS EASEMENT HAVE BEEN ROTATED TO ALIGN THE FIRST COURSE OF SAID EASEMENT WITH HEREON SHOWN EAST QUARTER LINE OF SECTION 9.

LEGEND

- = SET 5/8" REBAR WITH YELLOW PLASTIC CAP MARKED "STRATTON 1111"
- = FOUND 5/8" REBAR
- = FOUND 1/2" REBAR
- = FOUND LEAD AND TACK
- = FOUND AS INDICATED
- (NS) = NOT FOUND OR SET
- ⊙ = FOUND CASED MONUMENT; NOTATION DENOTES DISTANCE FROM CALCULATED (PER R5) POSITION

- B.O.B. = BASIS OF BEARING
 T.P.O.B. = TRUE POINT OF BEGINNING
 (R1) = HANSEN'S FIRST ADDITION TO BOARDMAN; FEE #115572
 (R2) = MORROW COUNTY MICROFILM RECORDS M-12493
 (R3) = DESCRIPTION PER TITLE REPORT
 (R4) = B.M.C.C. REPLAT; FILE #M-59301
 (R5) = KNUDSEN COMMERCIAL PARK; FILE #125791
- * — * — = FENCE
 - - - - - = EASEMENT
 _____ = PROPERTY BOUNDARY
 _____ = CENTERLINE

MORROW COUNTY SURVEYOR

RECEIVED 7-7-08
 FILED 1532-C
 INDEX

REGISTERED PROFESSIONAL LAND SURVEYOR
 ROBERT H. STRATTON
 JULY 22, 1977
 1111
 RENEWAL JUNE 30, 2008



EQUIPMENT USED
 A THREE-SECOND TOTAL STATION
 TOPCON HIPER RTK GPS

SURVEY FOR
FORTERRA, LLC

INDEX		SEC	T.	R.
1/4	1/4	9	4N	25E

STRATTON SURVEYING & MAPPING, PC
 7525 W. DESCHUTES PL. UNIT 1C
 KENNEWICK, WA 99336
 (509) 735-7364
 FAX: (509) 735-6560
 stratton@strattonsurvey.com

4098RS1.DWG © 2008
 DATE: 6/18/08 SHEET 1 OF 1
 DRAWN BY: GMN JOB # 4098