

# "WEST-VIEW ADDITION" TO THE HEPNER MASONIC CEMETERY

AN ADDITION TO THE HEPNER MASONIC CEMETERY, A SUBDIVISION OF PARCEL 1 OF THE CITY OF HEPNER PARTITION PLAT 2007-13 AS LOCATED IN THE SOUTHWEST QUARTER OF SECTION 35, TOWNSHIP 2 SOUTH, RANGE 26 EAST OF THE WILLAMETTE MERIDIAN, MORROW COUNTY, OREGON.

### SURVEYOR'S CERTIFICATE:

I, JUDSON L. COPPOCK A REGISTERED LAND SURVEYOR FOR THE STATE OF OREGON, DO HEREBY CERTIFY THAT I HAVE CORRECTLY SURVEYED AND MARKED WITH PROPER MONUMENTS THE LANDS SUBDIVIDED BY THIS PLAT. I ALSO CERTIFY THAT THIS SUBDIVISION PLAT COMPLIES WITH ALL OF THE PROVISIONS OF ORS CHAPTER 92 FOR SUBDIVISION PLATS.

### SURVEYOR'S NARRATIVE:

THIS SUBDIVISION PLAT IS TO CREATE THE 179 GRAVE SITES SHOWN. THE PARCEL BEING SUBDIVIDED IS OWNED BY THE HEPNER CEMETERY MAINTENANCE DISTRICT. THIS SUBDIVISION PLAT IS BASED ON PARCEL 1 OF THE CITY OF HEPNER PARTITION PLAT RECORDED AS PARTITION PLAT 2007-13 IN THE MORROW COUNTY PLAT RECORDS. THAT PARTITION WAS DONE BY ME IN PREPARATION FOR THIS SUBDIVISION.

### OWNERS DECLARATION:

WE, THE DIRECTORS OF THE HEPNER CEMETERY MAINTENANCE DISTRICT THE OWNER OF THE LAND SHOWN ON THIS SUBDIVISION PLAT, HEREBY, DECLARE THAT WE HAVE CAUSED THIS PLAT TO BE PREPARED AND IT IS OUR FREE AND WILLFUL ACT. WE ALSO RECOGNIZE THE 30 FOOT WIDE WATERLINE EASEMENT SHOWN ALONG THE EAST 30 FEET AND THE NORTH 30 FEET OF THIS PLAT TO THE CITY OF HEPNER FOR THE UPKEEP, MAINTENANCE AND REPLACEMENT OF AN EXISTING CITY WATER LINE. WE ALSO DEDICATE ALL WALKWAYS AND AREAS AROUND SHOWN GRAVES AS PUBLIC ACCESS TO ALL PLATTED GRAVES. WE ALSO RESERVE FOR PERPETUITY THE RIGHT TO DO STANDARD MAINTENANCE ON ALL OF THE GROUNDS OF THIS SUBDIVISION PLAT.

*Christopher George*  
CHRISTOPHER GEORGE, CHAIR

*Al Riney*  
AL RINEY, DIRECTOR

*Thomas Wolff*  
THOMAS WOLFF, DIRECTOR

STATE OF Oregon  
COUNTY OF Morrow } SS

ON THIS 21<sup>st</sup> DAY OF November, 2007  
CHRISTOPHER GEORGE, AL RINEY AND THOMAS WOLFF  
APPEARED BEFORE ME AND ACKNOWLEDGED THAT THEY  
HAVE CAUSED THIS INSTRUMENT TO BE PREPARED AND  
THAT IT WAS THEIR FREE AND VOLUNTARY ACT.

*Karen L. Haguewood*  
*Karen L. Haguewood*  
PRINTED NAME

NOTARY PUBLIC FOR Oregon

NOTARY PUBLIC NUMBER 394855

MY COMMISSION EXPIRES 9-10-09

### APPROVALS:

\* MORROW COUNTY SURVEYOR \*

APPROVED THIS 26 DAY OF November, 2007.  
*David R. Klein*  
UMATILLA COUNTY SURVEYOR

\* CITY OF HEPNER PLANNING DEPT. \*

APPROVED THIS 26th DAY OF November, 2007.  
*David R. Klein*  
PLANNING DIRECTOR

\* MAYOR OF THE CITY OF HEPNER \*

APPROVED THIS 10 DAY OF Dec, 2007.  
*Salim Carter*  
MAYOR

\* MORROW COUNTY ASSESSOR AND TAX COLLECTOR \*

TAXES ARE PAID IN FULL AND THIS PLAT IS  
APPROVED THIS 17 DAY OF December, 2007.  
*Jeff Paul*  
ASSESSOR AND TAX COLLECTOR

\* MORROW COUNTY COMMISSIONERS \*

APPROVED THIS 17<sup>th</sup> DAY OF December, 2007.  
*Serry K. Salmer*  
COUNTY JUDGE  
*Absent* *Ken A. Lueck*  
COMMISSIONER COMMISSIONER

STATE OF Oregon  
COUNTY OF Morrow } SS

I HEREBY CERTIFY THAT THE WITHIN INSTRUMENT WAS  
RECEIVED AND FILED FOR RECORD ON THE 18<sup>th</sup>  
DAY OF December, 2007 A.D. AT 4:25:41  
O'CLOCK P. M.

AND RECORDED AS FILE NUMBER 2007-20970

MORROW COUNTY CLERK

### RECEIVED BY

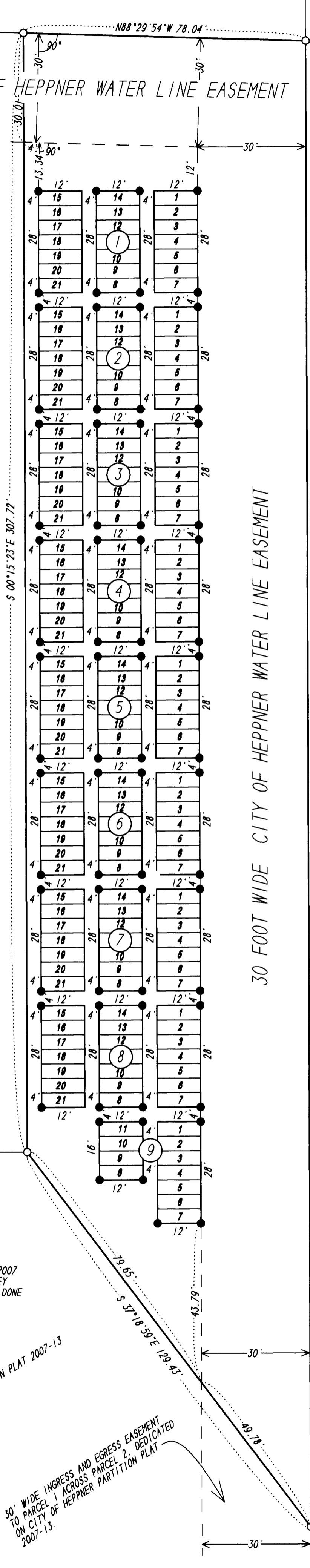
Morrow County Surveyor  
Date Dec 24, 2007  
Rec'd By SKB  
No. 1520-C

DEPUTY

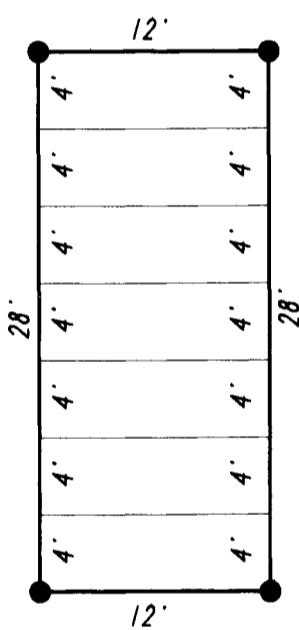
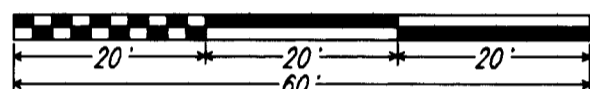
THIS IS A TRUE COPY OF THE ORIGINAL.

*Judson L. Coppock*  
JUDSON L. COPPOCK PLS

30 FOOT WIDE CITY OF HEPNER WATER LINE EASEMENT



SCALE  
1" = 20'



TYPICAL 4' X 12' GRAVE LAYOUT

### LEGEND:

- SET A 5/8" X 30" STEEL REBAR WITH A PLASTIC CAP MARKED LS 2850.
- FOUND MONUMENTS SET BY ME IN A SURVEY FOR THE HEPNER CEMETERY MAINTENANCE DISTRICT, DATED 30 JULY 2007 AS FILE # 1510-C, MORROW COUNTY SURVEY RECORDS. PARTITION PLAT 2007-13 ALSO DONE BY ME.

REGISTERED PROFESSIONAL LAND SURVEYOR

*Judson L. Coppock*  
OREGON  
JANUARY 20 1998  
JUDSON L. COPPOCK  
2850

RENEWAL DATE: DEC. 31, 2007

PARCEL 2 OF PARTITION PLAT 2007-13

30' WIDE INGRESS AND EGRESS EASEMENT TO PARCEL 1 ACROSS PARCEL 2, DEDICATED ON CITY OF HEPNER PARTITION PLAT 2007-13.

N 00°15'23" W 408.61'  
BEARING BASE

EXISTING CEMETERY