

MORROW COUNTY PARTITION PLAT # 2007-5

A REPLAT OF MORROW COUNTY PARTITION PLAT # 2007-1 TO CORRECT A SURVEYING ERROR MADE ON MORROW COUNTY PARTITION PLAT # 2007-1. THIS REPLAT REPLACES THE RECORDED MORROW COUNTY PARTITION PLAT # 2007-1 AND IS THE OFFICIAL PLAT FOR LAND PARTITION NUMBER LS-S-385. PARCEL 1 OF MORROW COUNTY PARTITION PLAT 2007-10 AS NOTED BELOW.

LD NUMBER LP-S-365 PARCEL 1 OF MORROW COUNTY PARTITION PLAT NUMBER 2002-10 AS LOCATED IN SECTIONS 2, 3, 9, 10, 11, 15, 16, 17, 21, 22, 27, AND 28, TOWNSHIP 1 SOUTH, RANGE 24 EAST OF THE WILLAMETTE MERIDIAN, MORROW COUNTY, OREGON.

OWNERS DECLARATION:

I, MARY EMERT THE PRESIDENT OF "EMERT RANCHES, INC.", "EMERT RANCHES, INC." BEING THE OWNER OF PARCEL 1 SHOWN ON THIS PARTITION PLAT. HEREBY, DECLARE THAT I HAD CAUSED MORROW COUNTY PARTITION PLAT 2007-1 TO BE PREPARED AND IT WAS MY FREE AND WILLFUL ACT.

THIS PARTITION PLAT IS A CORRECTION REPLAT OF THE MORROW COUNTY PARTITION PLAT RECORDED AS 2007-1 AND AS OWNER OF PARCEL 1 OF MORROW COUNTY PARTITION PLAT 2007-1 AGREE TO THIS CORRECTION PARTITION PLAT AND THAT IT IS THE OFFICIAL PLAT OF THE LANDS INTENDED TO BE PARTITIONED BY MORROW COUNTY PARTITION PLAT 2007-1.

I ALSO ACKNOWLEDGE THE 20 FOOT WIDE WATERLINE EASEMENT AS SHOWN.

REGISTERED PROFESSIONAL LAND SURVEYOR

Judson L. Copcock
 OREGON
 JANUARY 20 1998
 JUDSON L. COPPOCK
 2850
 RENEWAL DATE: DEC. 31, 2007

Mary Emert
 MARY EMERT
 PRESIDENT OF "EMERT RANCHES, INC."

STATE OF OREGON } SS
 COUNTY OF MORROW

ON THIS 19TH DAY OF APRIL, 2007
 MARY EMERT, PRESIDENT OF EMERT RANCHES, INC., APPEARED BEFORE ME AND ACKNOWLEDGED THAT SHE HAS AGREED TO THIS REPLAT OF MORROW COUNTY PARTITION PLAT 2007-1 AND THAT AGREEMENT IS HER FREE AND VOLUNTARY ACT.

Shannon K. Benefit
 SHANNON K. BENEFIT
 PRINTED NAME
 NOTARY PUBLIC FOR OREGON
 NOTARY PUBLIC NUMBER 369333
 MY COMMISSION EXPIRES JUNE 16, 2007

OWNERS DECLARATION:

WE, HOWARD L. MULLINS AND SHARON CAMARILLO, REPRESENTATIVES OF THE "IONE EDUCATION FOUNDATION" BEING THE OWNER OF PARCEL 2 SHOWN ON THIS PARTITION PLAT. HEREBY AGREE THAT THIS PARTITION PLAT IS A CORRECTION REPLAT OF MORROW COUNTY PARTITION PLAT RECORDED AS 2007-1 AND AS OWNERS REPRESENTATIVES OF PARCEL 2 OF MORROW COUNTY PARTITION PLAT 2007-1 AGREE TO THIS REPLAT AND THAT IT IS THE OFFICIAL PLAT OF THE LANDS INTENDED TO BE PARTITIONED BY MORROW COUNTY PARTITION PLAT 2007-1.

Howard L. Mullins
 HOWARD L. MULLINS
 VICE PRESIDENT
 "IONE EDUCATION FOUNDATION"

Sharon Camarillo
 SHARON CAMARELLO
 SECRETARY
 "IONE EDUCATION FOUNDATION"

STATE OF OREGON } SS
 COUNTY OF MORROW

ON THIS 18TH DAY OF APRIL, 2007
 HOWARD L. MULLINS AND SHARON CAMARELLO APPEARED BEFORE ME AND ACKNOWLEDGED THAT THEY HAVE AGREED TO THIS REPLAT OF MORROW COUNTY PARTITION PLAT 2007-1 AND THAT AGREEMENT IS THEIR FREE AND VOLUNTARY ACT.

Shannon K. Benefit
 SHANNON K. BENEFIT
 PRINTED NAME
 NOTARY PUBLIC FOR OREGON
 NOTARY PUBLIC NUMBER 369333
 MY COMMISSION EXPIRES JUNE 16, 2007

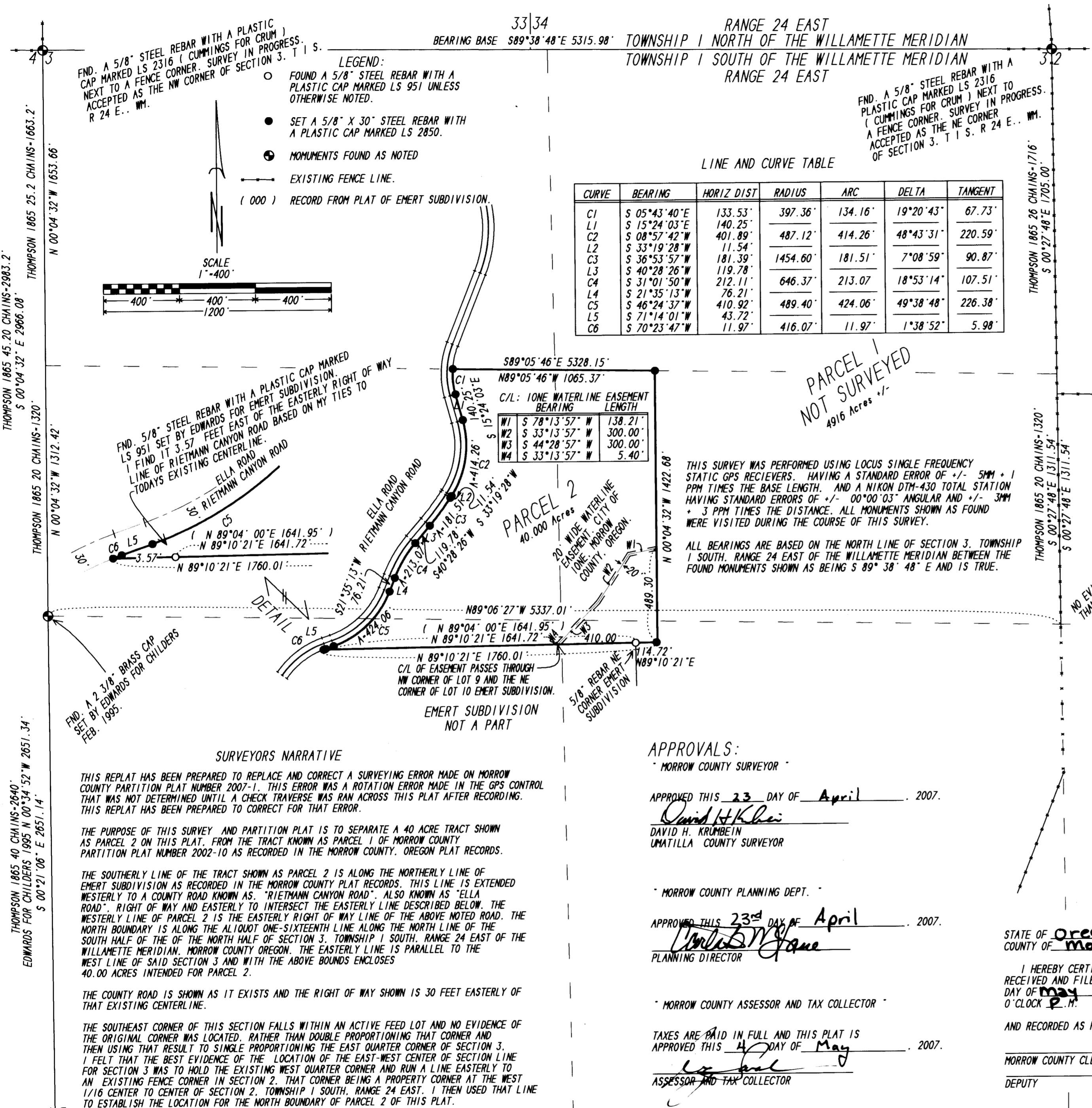
STATE OF Oregon } SS
 COUNTY OF Morrow

I HEREBY CERTIFY THAT THE WITHIN INSTRUMENT WAS RECEIVED AND FILED FOR RECORD ON THE 4th DAY OF May, 2007 A.D. AT 2:19 O'CLOCK P.M.

AND RECORDED AS FILE NUMBER 2007-19281

MORROW COUNTY CLERK
 DEPUTY

RECEIVED BY
 Morrow County Surveyor
 Date MAY 4, 2007
 rec'd by SKB
 No. 1502-C



LINE AND CURVE TABLE

CURVE	BEARING	HORIZ DIST	RADIUS	ARC	DELTA	TANGENT
C1	S 05°43'40"E	133.53'	397.36'	134.16'	19°20'43"	67.73'
L1	S 15°24'03"E	140.25'				
C2	S 08°57'42"W	401.89'	487.12'	414.26'	48°43'31"	220.59'
L2	S 33°19'28"W	11.54'				
C3	S 36°53'57"W	181.39'	1454.60'	181.51'	7°08'59"	90.87'
L3	S 40°28'26"W	119.78'				
C4	S 31°01'50"W	212.11'	646.37'	213.07'	18°53'14"	107.51'
L4	S 21°35'13"W	76.21'				
C5	S 46°24'37"W	410.92'	489.40'	424.06'	49°38'48"	226.38'
L5	S 71°14'01"W	43.72'				
C6	S 70°23'47"W	11.97'	416.07'	11.97'	1°38'52"	5.98'

APPROVALS:

MORROW COUNTY SURVEYOR
 APPROVED THIS 23 DAY OF April, 2007.
David H. Krumbeln
 DAVID H. KRUMBEIN
 UMATILLA COUNTY SURVEYOR

MORROW COUNTY PLANNING DEPT.
 APPROVED THIS 23rd DAY OF April, 2007.
Charles M. Jones
 PLANNING DIRECTOR

MORROW COUNTY ASSESSOR AND TAX COLLECTOR
 TAXES ARE PAID IN FULL AND THIS PLAT IS
 APPROVED THIS 4 DAY OF May, 2007.
Judson L. Copcock
 ASSESSOR AND TAX COLLECTOR

LEGEND:

- FOUND A 5/8" STEEL REBAR WITH A PLASTIC CAP MARKED LS 951 UNLESS OTHERWISE NOTED.
- SET A 5/8" X 30" STEEL REBAR WITH A PLASTIC CAP MARKED LS 2850.
- ⊙ MONUMENTS FOUND AS NOTED
- - - EXISTING FENCE LINE.
- (000) RECORD FROM PLAT OF EMERT SUBDIVISION.

SCALE 1"=400'

BEARING BASE S89°38'48"E 5315.98' TOWNSHIP 1 NORTH OF THE WILLAMETTE MERIDIAN
 TOWNSHIP 1 SOUTH OF THE WILLAMETTE MERIDIAN
 RANGE 24 EAST
 RANGE 24 EAST

THOMPSON 1865 45.20 CHAINS-2983.2'
 THOMPSON 1865 25.2 CHAINS-1663.2'
 THOMPSON 1865 20 CHAINS-1320'
 THOMPSON 1865 40 CHAINS-2640'
 EDWARDS FOR CHILDERS 1995 N 00°34'52"W 2051.34'
 S 00°21'06"E 2851.14'

THOMPSON 1865 26 CHAINS-1716'
 S 00°27'48"E 1705.00'

THOMPSON 1865 20 CHAINS-1320'
 S 00°27'48"E 1311.54'

THOMPSON 1865 40 CHAINS-2640'
 S 00°27'48"E 1311.54'

SCALE 1"=400'

THOMPSON 1865 45.20 CHAINS-2983.2'
 THOMPSON 1865 25.2 CHAINS-1663.2'
 THOMPSON 1865 20 CHAINS-1320'
 THOMPSON 1865 40 CHAINS-2640'
 EDWARDS FOR CHILDERS 1995 N 00°34'52"W 2051.34'
 S 00°21'06"E 2851.14'

THOMPSON 1865 26 CHAINS-1716'
 S 00°27'48"E 1705.00'

THOMPSON 1865 20 CHAINS-1320'
 S 00°27'48"E 1311.54'

THOMPSON 1865 40 CHAINS-2640'
 S 00°27'48"E 1311.54'

THOMPSON 1865 45.20 CHAINS-2983.2'
 THOMPSON 1865 25.2 CHAINS-1663.2'
 THOMPSON 1865 20 CHAINS-1320'
 THOMPSON 1865 40 CHAINS-2640'
 EDWARDS FOR CHILDERS 1995 N 00°34'52"W 2051.34'
 S 00°21'06"E 2851.14'

THOMPSON 1865 26 CHAINS-1716'
 S 00°27'48"E 1705.00'

THOMPSON 1865 20 CHAINS-1320'
 S 00°27'48"E 1311.54'

THOMPSON 1865 40 CHAINS-2640'
 S 00°27'48"E 1311.54'

THOMPSON 1865 45.20 CHAINS-2983.2'
 THOMPSON 1865 25.2 CHAINS-1663.2'
 THOMPSON 1865 20 CHAINS-1320'
 THOMPSON 1865 40 CHAINS-2640'
 EDWARDS FOR CHILDERS 1995 N 00°34'52"W 2051.34'
 S 00°21'06"E 2851.14'

THIS IS A TRUE COPY OF THE ORIGINAL.

Judson L. Copcock
 JUDSON L. COPPOCK PLS

FND. A 2 3/8" BRASS CAP SET BY KRUMBEIN FOR MORROW COUNTY IN 1983. NEW MONUMENT BOX PLACED OVER BRASS CAP.

FND. 5/8" STEEL REBAR WITH A PLASTIC CAP MARKED LS 951 SET BY EDWARDS FOR EMERT SUBDIVISION. I FIND IT 3.57 FEET EAST OF THE EASTERLY RIGHT OF WAY LINE OF RIETMANN CANYON ROAD BASED ON MY TIES TO TODAY'S EXISTING CENTERLINE.

FND. A 5/8" STEEL REBAR WITH A PLASTIC CAP MARKED LS 2316 (CUMMINGS FOR CRUM) NEXT TO A FENCE CORNER. SURVEY IN PROGRESS. ACCEPTED AS THE NW CORNER OF SECTION 3, T1S, R 24 E., WM.

FND. A 2 3/8" BRASS CAP SET BY EDWARDS FOR CHILDERS FEB. 1995.

FND. A 2 3/8" BRASS CAP SET BY EDWARDS FOR CHILDERS FEB. 1995.

FND. A 2 3/8" BRASS CAP SET BY EDWARDS FOR CHILDERS FEB. 1995.