

SURVEYOR'S NARRATIVE

THE PURPOSE OF THIS SURVEY IS TO ESTABLISH A LEASE BOUNDARY FOR A COMMUNICATION SITE. THIS CERTIFICATE OF SURVEY DOES NOT CREATE A SEPARATE PARCEL. THE BOUNDARY OF THE SITE IS NOT CONTIGUOUS WITH THE PROPERTY LINE, SO THE LOCATION IS NEW AND ARBITRARY. RECORDS OF THE CORPS OF ENGINEERS MONUMENTS ARE NOT AVAILABLE. SURVEY METHOD IS GPS RTK FOR TIES TO MONUMENTS AND SETTING OF CORNERS. THE POSITIONAL ERROR IS WITHIN +/- 0.02 FEET.

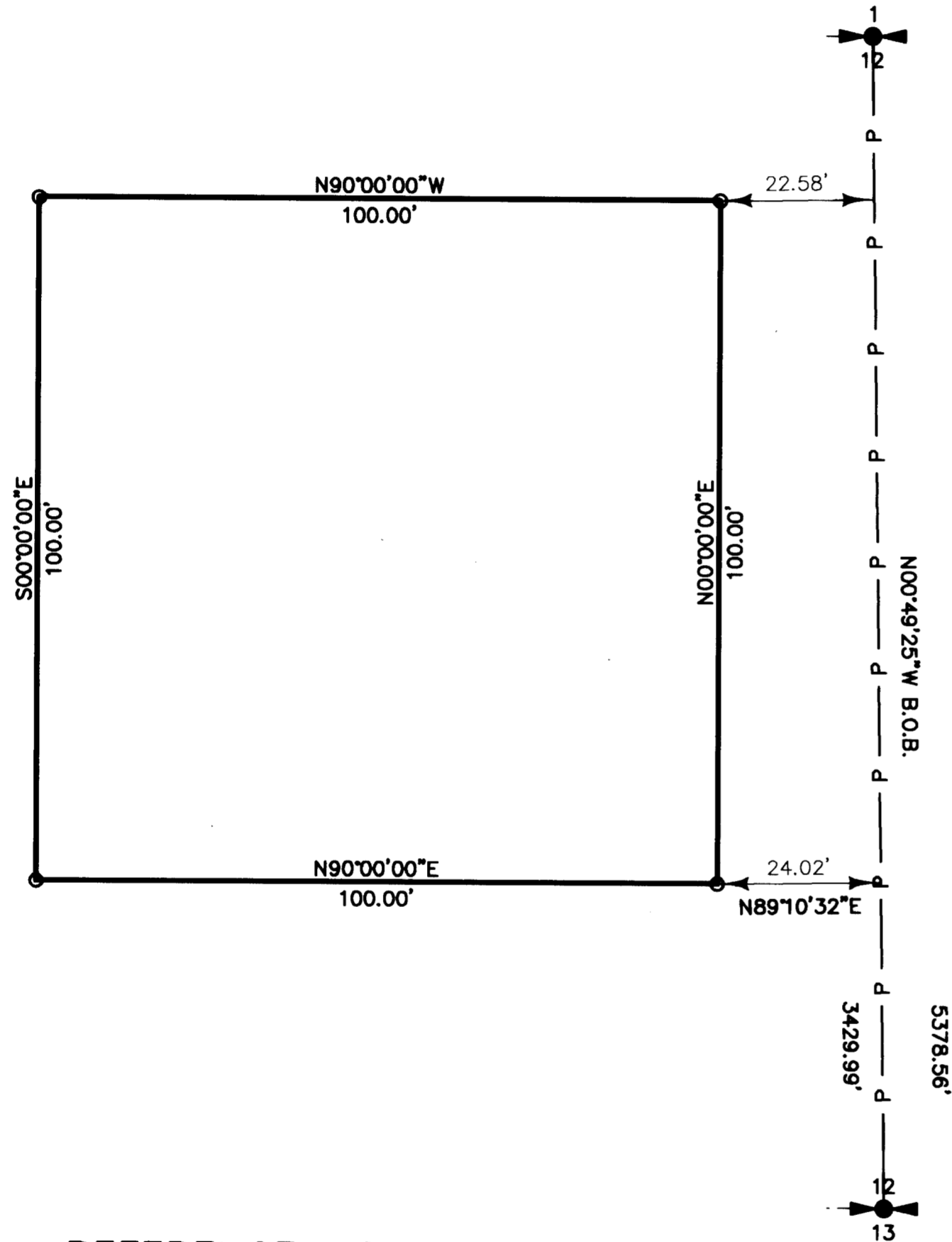
SURVEY
 S.E.1/4 OF THE N.W.1/4, SEC. 12, T.4 N., R.26 E., W.M.
 MORROW COUNTY, OREGON

FOUND 1939 GLO BRASS CAP
 MONUMENTS SET TEE POST ONE
 FOOT NORTH AND SOUTH

REFERENCE MONUMENTS

FOUND CORPS OF ENGINEERS 3/4" ALUMINUM MONUMENTS
 1987 WITH CARSONITE POST MARKED "PROPERTY BOUNDARY"

MONUMENT "A3L" S 0°49'19" E 682.83'
 MONUMENT "A3K" S 0°49'19" E 1049.22'



REFERENCE MONUMENTS

FOUND CORPS OF ENGINEERS 3/4" ALUMINUM MONUMENTS
 1987 WITH CARSONITE POST MARKED "PROPERTY BOUNDARY"

MONUMENT "A3A" N 0°49'19" W 259.57'
 MONUMENT "A3B" N 0°49'19" W 661.82'

FOUND 1939 GLO BRASS CAP
 MONUMENTS SET TEE POST ONE
 FOOT NORTH AND SOUTH

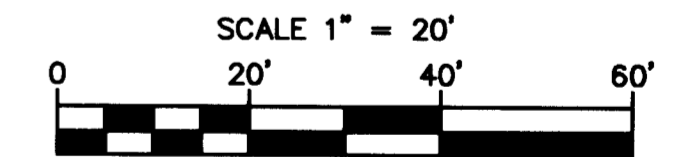
LEGEND

- = SET 5/8" x 30" REBAR W/ YELLOW PLASTIC CAP MARKED "STRATTON 1111"
- = FOUND AS INDICATED
- B.O.B. = BASIS OF BEARING
- = LEASE BOUNDARY
- P — P — = PARENT PARCEL BOUNDARY

REGISTERED
 PROFESSIONAL
 LAND SURVEYOR

 OREGON
 JUL 22 1877
 ROBERT H. STRATTON
 1111
 RENEWAL JUNE 30, 2006

RECEIVED BY
 Morrow County Surveyor
 Date MAY 3 2006
 Rec'd By SKB
 No. 1469-C



BASIS OF BEARING
 GEODETIC NORTH AS DERIVED BY RTK GPS

EQUIPMENT USED
 A THREE-SECOND TOTAL STATION
 TOPCON RTK GPS

SURVEY FOR U. S. CELLULAR	INDEX			STRATTON SURVEYING & MAPPING 7525 W. DESCHUTES PL. UNIT 1C KENNEWICK, WA. 99336 (509) 735-7364 FAX: (509) 735-6560 stratton@strattonsurveying.com
	1/4	1/4	SEC. T. R.	
	12	4 N	26E	DATE: 3/22/06
				SH. 1 OF 1
				DRAWN BY: RHS
				JOB # 3682

1469