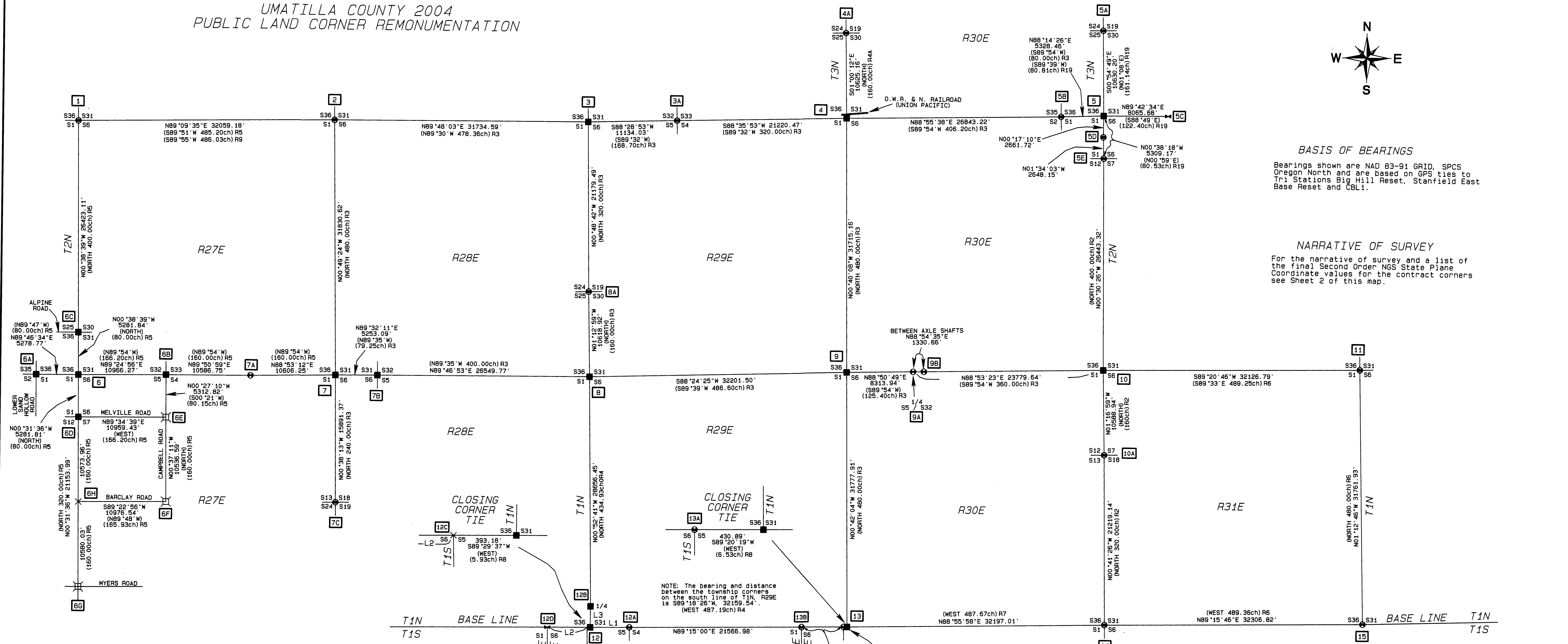
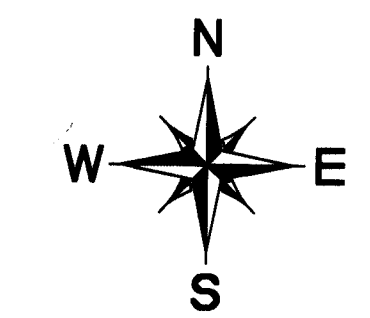


UMATILLA COUNTY 2004  
PUBLIC LAND CORNER REMONUMENTATION



**BASIS OF BEARINGS**  
Bearings shown are NAD 83-91 GRID, SPCS Oregon North and are based on GPS ties to Tri Stations Big Hill Reset, Stanfield East Base Reset and CBL1.

**NARRATIVE OF SURVEY**  
For the narrative of survey and a list of the final Second Order NGS State Plane Coordinate values for the contract corners see Sheet 2 of this map.

NOTE: The bearing and distance between the township corners on the south line of T1N, R29E is S89°18'26"W, 32159.54' (WEST 487.19ch) R4.

**LINE TABLE FOR CORNER No. 12**

LINE No.	BEARING	DISTANCE
L1	S89°31'19"W	4897.93'
L2	S89°29'37"W	4970.56'
L3	N00°24'14"E	2616.21'
L4	N01°05'38"W	5143.56'
L4	(NORTH)	(78.45ch) RB
L5	N01°05'38"W	2646.27'
L5	(NORTH)	(40.00ch) RB
L6	S88°23'24"W	2600.98'
L6	(N89°10'E)	(40.00ch) RB

NOTE: There was a fence running along the line west of corner No. 13. It has since been removed and plowed out. I held the closing corner monuments set by Mr. Gaylord from the original stones as being the best available evidence of the true baseline location.

NOTE: The stone I found at the corner to S31/S36 was not of record. I wanted to verify its location but could not find the closing monument to S5/S6. I tied the corners 12E, 12F, and 12G to be able to project the closing corner location. I also found the 1/4 corner stone on the east side of S6 but it was lying loose on the ground with some fence wire approximately 40' east of the line.

**LEGEND**

- SET A BRASS CAP. SEE THE NARRATIVE AND FILED CERTIFICATES FOR THE DESCRIPTIONS
- ⊙ FOUND EXISTING MONUMENT SEE THE NARRATIVE FOR DESCRIPTION
- ⊠ SET A RR SPIKE TO MARK POSITION HELD AS EVIDENCE
- ✕ EVIDENCE OF CORNER POSITION, NOT SET.
- ✕ COMPUTED POINT ONLY NOTHING SET.
- 14 PROJECT CORNER NUMBER ASSOCIATED WITH THE NARRATIVE
- (XXX) DATA FROM RECORD SURVEYS AS NOTED

**TOWNSHIP LINES NOTE**

The purpose of this survey was to find or re-establish the 15 primary township corners as shown on this map. The additional corners shown were positions used to verify or re-establish the primary corners. The measurements given are to show the relationship of these corners to one another. This survey should not be considered to be a complete display of all township / section line data as I only searched for enough of the corners along each line to verify or replace the primary corners.

**RECORD SURVEY INFORMATION**

No.	SURVEYOR / SOURCE	SURVEY / RECORD No.	APPLIES TO CORNER	No.	SURVEYOR / SOURCE	SURVEY / RECORD No.	APPLIES TO CORNER	No.	SURVEYOR / SOURCE	SURVEY / RECORD No.	APPLIES TO CORNER
R1	DAVID P. THOMPSON	GLO CONTRACT No. 79 DATED JULY 26, 1858	12, 13, 14 & 15.	R14	TERRY HAMBY	UMATILLA CS# R-41-B	3 & 8.	R26	ODOT	STOCKPILE MAP 1R-5-223	6.
R2	DAVID P. THOMPSON	GLO CONTRACT No. 81 DATED JULY 8, 1859	5, 10, & 14.	R15	OREGON - WASHINGTON RAILROAD & NAVIGATION	RIGHT OF WAY MAP DATED 12 - 31, 1927.	4.	R27	ODOT	HIGHWAY MAP 6B-17-2	6.
R3	DAVID P. THOMPSON	GLO CONTRACT No. 83 DATED JULY 22, 1859	2, 3, 4, 7, 8, 9 & 10.	R16	OREGON - WASHINGTON RAILROAD & NAVIGATION	DEED BOOK 36, PAGE 110 & COUNTY RECORDS PLAT BOOK 2 PAGE 43.	4.	R28	ODOT	HIGHWAY MAP 6B-21-6	6.
R4A	N. H. GATES	GLO CONTRACT No. 84 DATED JULY 22, 1859	4.	R17	BONNEVILLE POWER ADMINISTRATION	MGNARY TO PENDELTON MAP SHEET 20 OF 40 DWG# 133 01 340 D1.	4.	R29	ODOT	HIGHWAY MAP 9B-19-9	6.
R4	L. F. CARTEE	GLO CONTRACT No. 88 DATED MAY 11, 1860	8, 9, 12 & 13.	R18	UMATILLA COUNTY	UMATILLA CS# 01-101-B	4A.	R30	JUD COPPOCK	MORROW CS# C-1287-E	7C.
R5	EBENEZER E. HAFT	GLO CONTRACT No. 91 DATED SEPT. 11, 1850	1, 6 & 7.	R19	WILLARD BRADLEY	RECORD OF PRIVATE SURVEYS B2, P270.	5.	R31	RALPH THOMPSON	UNRECORDED SURVEY FOR PINE CITY RANCH DATED MARCH 3, 1964.	7.
R6	JOSIAH A. BURNETT	GLO CONTRACT No. 92 DATED SEPT. 12, 1860	10, 11, 14 & 15.	R20	JOHN ARNOLD	ROAD SURVEY FOR COUNTY ROAD 255	5.	R32	GEARY KIMBRELL	ROAD SURVEY FOR COUNTY ROAD 781	10.
R7	WILLIAM B. CAMPBELL	GLO CONTRACT No. 95 DATED SEPT. 19, 1860	9, 13 & 14.	R21	L. E. MACOMBER	ROAD SURVEY FOR COUNTY ROAD 541	5.	R33	JOHN R. GRAY	UMATILLA CS# Q-51-C	10.
R8	GEORGE WILLIAMS ET AL	GLO CONTRACT No. 154 DATED JUNE 6, 1871	12 & 13.	R22	GARY WAGNER	UMATILLA CS# 93-133-B	5.	R34	RALPH THOMPSON	UMATILLA CS# D-32-AX	10.
R9	OTIS GOULD	GLO CONTRACT No. 217 DATED MARCH 12, 1938	1 & 2.	R23	DENNIS GAYLORD	CORNER CERT. 04-29-R	5D.	R35	ROBERT STRATTON	UMATILLA CS# 05-52-B	10A.
R10	DENNY EDWARDS	UMATILLA CS# 90-53-A	2.	R24	DENNIS GAYLORD	CORNER CERT. 04-30-R	5E.	R36	WILLIAM R. WELLS	UMATILLA CS# 93-54-C	11.
R11	DENNY EDWARDS	UMATILLA CS# 02-57-B	2.	R25	MORROW COUNTY	ROAD PETITIONS FOR ROADS 696, 698, 755, 795 & 927.	6.	R37	DENNIS GAYLORD	CORNER CERT. 02-269-R	12A.
R12	WAYNE HARRIS	UMATILLA CS# Q-1655-B	3 & 8.					R38	DENNIS GAYLORD	CORNER CERT. 02-268-R	13A.
R13	DONALD STAEBLER	UMATILLA CS# I-158-B	3.					R39	DENNIS GAYLORD	CORNER CERT. 01-206-C	14.
								R40	DAVID L. HADDOCK	UMATILLA CS# 01-206-C	14.
								R41	DAVID L. HADDOCK	UMATILLA CS# 97-140-C	15.

RECEIVED BY  
Umatilla County Surveyor  
Date: 05 - 05  
Rec'd By: KK  
No.: 05-171-C

RECEIVED BY  
Morrow County Surveyor  
Date: 05/27/05  
Rec'd By: JLC  
No.: 1426 Dsg1

REGISTERED PROFESSIONAL LAND SURVEYOR  
STEPHEN K. HADDOCK  
OREGON JULY 9, 2001  
P.O. BOX 6  
Pilot Rock, Oregon 97868  
RENEWS 6-30-05

SHEET 1 OF 2

<b>SURVEY FOR</b> UMATILLA COUNTY 3920 WESTGATE PENDLETON, OR 97801	PROJECT No. 04 - 01    SCALE 1" = 6000'
LOCATION: Townships 1 and 2 North Ranges 27 - 31 East	Project Completed: April, 2005.
	<b>WITNESS TREE SURVEYING</b> Stephen K. Haddock, PLS P.O. Box 6 Pilot Rock, Oregon 97868 (541) 443-2922

# NARRATIVE OF SURVEY

This survey was performed at the request of Umatilla County. The purpose of the survey was to locate and/or reestablish, monument, map and provide second order NGS State Plane Coordinates for the township corners of T.1N., R. 29 -31 E., and T.2N. R. 27 - 30 E. This survey was performed with a Trimble R7/RS GPS system using static surveying procedures. Horizontal control was established by ties to NGS monuments Big Hill Reser, Stanfield East Base Reser and CBL1. Vertical control was established by ties to NGS monuments H518, T519, U519 and 793. A separate position for each corner was established from two different base stations. The raw data were compared for blunder detection and then reduced in a least squares adjustment to produce the final state plane values published on this map. This map does not include reference to all of the plow berms, fence lines, roads, etc., that were investigated as possible evidence. A description of the monuments shown on this map and the methods of reestablishment of corners is given below.

**1** This corner is monumented with a 3" iron pipe and brass cap set by Mr. Otis Gould in 1939. The monument is in good condition and firmly set. The windmill Mr. Gould called for has been taken down.

**2** This corner is currently monumented with a brass cap in a valve box monument case in the west shoulder of Oregon Highway 207. It is firmly set in the asphalt and is in good condition.

**3** This corner was monumented with a stone of unknown origin. The stone first shows in the record in 1964 in a survey by Mr. Wayne Harris. The stone has been used in 3 surveys. One of the land owners, Mr. Prior, informed me that Vey Road, which runs west from this corner, was moved to agree with the location of this stone. Because of it's local acceptance I have held this corner. I remonumented this corner with an iron pipe and brass cap prior to making any GPS measurements.

**3A** This corner is currently monumented with an iron pipe and brass cap set by Mr. Don Staebler in 1974. The monument was firmly set and in good condition. I used it as one of the project base stations.

**4** This corner position falls in a farmed field south of the Umatilla River. I reestablished this position from ties to the corner from the railroad as shown on the map recorded in Plat Book 2, Page 43 of the Umatilla County Records Office. That map was filed as part of an agreement to relocate portions of the river. That relocation made the GLO calls to the river unreliable. I established the township line to the north by ties to the railroad, existing fences and the monument at corner 4A. I then projected this line the record distance south of the railroad right of way which I determined by the actual location of the tracks.

**4A** This corner is currently monumented by a 2" aluminum pipe with an aluminum cap set by Mr. Robert Stratton under survey No. 01-101-B. The monument is in good condition and firmly set.

**5** This corner was the subject of a dispute in 1915 as can be seen in the survey by Willard Bradley recorded in the Record of Private Surveys, Book 2, Page 270. Mr. Bradley chained from the disputed corner to accepted monuments north, south, east, and west and established a corner point by double proportionate measurement. He monumented his corner with a stone. The landowner, Mr. Bill Dick, levelled this area in the 1970's to build a corral. I found Mr. Bradley's stone, plainly marked, and out of position in the face of the fill made by Mr. Dick. In 1999, Mr. Gary Wagner established another position for this corner under survey 99-133-B. His survey says "fence corner held". There is no actual fence corner at this point. That position falls in an alley of the corral. Mr. Wagner did not set any monument. I reestablished this corner point at the position of the "disputed" corner using Bradley's record distances to the north, west, and south. This position fits the road centerlines to the east and west and is in line with the fence to the south. It is obvious from the continued occupation that Mr. Bradley's proportioned point, which was 90' to the west, was never adopted as the accepted corner position. I therefore hold the location which has been in use since some time prior to 1915.

**5A** At this corner I found a 1/2" iron pipe with a point forged on it set over the top of an old buggy spindle. I did not find Bradley's stone but the point now falls in the middle of a road intersection with roads running north, east, and south. The fence line to the north can still be seen.

**5B** This corner is currently monumented with a basalt stone as called for in both the Bradley and Wagner surveys. The stone is in good condition, is firmly set and has a County Monument sign on a nearby guard post.

**5C** I did not find the stone set by Bradley for this corner point. The position shown on this map is the intersection of the east - west road centerline and a north - south plow berm. I found a guy line anchor in the field south of the road that indicates there may have been a power line running along the plow berm to the north.

**5D** The position indicated by Bradley's stone was remonumented in 2004 by Mr. Dennis Gaylor. The current fence, which is old, lies 46 feet west of the brass cap and indicates that Bradley's corner position has not been accepted as the true 1/4 corner. Mr. Bradley set this monument at the proportionate point.

**5E** This corner is currently monumented with an iron pipe and brass cap set by Mr. Dennis Gaylor in 2004 as seen in corner certificate 04-30-R. The monument is in good condition and firmly set.

**6** This corner position falls in a completely plowed area. The landowner, Curt Perkins, told me that the plow berms in the area were not stable and that he had never seen a corner in this area. I reestablished this corner position by double proportionate measurement as per the 1973 BLM manual of instructions. I set a galvanized iron pipe with attached brass cap at the corner point.

**6A** This corner was shown as "found" on ODOT Highway Right of Way map 6B-21-6 dated 1946. The point falls in an area that is completely farmed today. I reestablished this position from ties to the highway centerline and the centerline of Lower Sand Hollow Road. That road is supposed to lie along the section line. I held the record distance from the state highway map and set an iron pipe with a brass cap attached 2 feet below the surface of the field.

**6B** Campbell Road shows on the highway right of way maps and in the county road records as lying along the section line. I reestablished this corner at the intersection of the long accepted fence line to the east and the centerline of Campbell Road. I set a brass cap on an iron pipe at the corner point approximately 10" below the surface of the road.

**6C** To reestablish this corner I first determined the location of the township line by ties to corners No. 1, 6A & 6B. I then held the intersection of that line with the centerline of Alpine Road which is shown as on the section line by ODOT survey 1R-5-223. I set an iron pipe with a brass cap at the corner point approximately 10" below the surface of the road.

**6D** To reestablish this corner I first determined the location of the township line by ties to corners No. 6A, 6B, and 6G. Corner No. 6G is the intersection of the centerline of Myers Road and a long standing fence line identified to me by area residents Sam Myers and Roger Morter as having "always been the line". I verified this by ties to fence lines and roads both east and west of this point. I then held the intersection of the township line and the centerline of Melville Road as the corner position. I set an iron pipe with brass cap at the corner point approximately 10" below the surface of the road.

**6E** The county road records indicate that both Melville Road and Campbell Road are along the section lines. I set a railroad spike at the apparent intersection of these roads to mark the position that I measured to while evaluating the evidence of these corners.

**6F** The county road records indicate that both Barclay Road and Campbell Road are along the section lines. I set a railroad spike at the apparent intersection of these roads to mark the position that I measured to while evaluating the evidence of these corners.

**6G** As stated in the note for corner No. 6D above, this position is the intersection of a fence line to the north and the centerline of Myers Road. The fence line is now just a row of widely separated posts which Mr. Morter stated that he had driven in the old fence line before it was removed. I marked this intersection with a railroad spike driven in the asphalt to indicate the position I held when considering the evidence for these corners.

**6H** This position is the intersection of Barclay Road and the township line. I did not set any monument at this position.

**7** I reestablished this position by proportioning between the corners east and west and holding the location of the long term fence line to establish the northing position. I set an iron pipe with a brass cap in a small collar of stone under the existing fence.

**7A** This monument was set by Mr. Ralph Thompson in 1964 in an unrecorded survey done to divide the Pine City Ranch. That survey was done for Mr. George Luciani and will be filed along with this survey. Mr. Luciani told me that Mr. Thompson arrived at this position by chaining from the fence line 1 mile west. At this point Mr. Thompson found a board in the fence he insisted was the corner mark. That fence ran north and south. This position is more than 90' south of the township line. I held it as evidence of the fence line which Mr. Luciani said was on line. The point is monumented with a mound of stone and a 2" o.d. iron pipe filled with concrete. There is a nail set in the concrete which attaches a washer stamped RLS 506.

**7B** This position was identified by Mr. Luciani as the corner point. At this point I found the rotted remains of 3 corner posts and what may have possibly have been the original stake. I set an iron pipe with a brass cap approximately 14" below the surface.

**7C** This corner is monumented with mound of stone and a 2" o.d. iron pipe filled with concrete. There is a nail set in the concrete that attaches a washer stamped RLS 506. Mr. Luciani said he remembers Mr. Thompson finding a marked stone at this corner.

**8** I found a decayed wooden post at the corner of fences running north, south and southeast. This location agrees with other fences and occupation in the area and I have held it as the best available evidence. I set an iron pipe with brass cap in a small collar of stone.

**8A** This corner is monumented with a brass cap set at the position of a "stone" under survey R-41-B. That stone is not of record and falls approximately 45' west of the existing fence corner. The fence at that point is within 5 feet of being on the straight line between the township corners. There were other corners set by proportioning during that survey which did not take into account the earlier survey done by Harris in 1964.

**9** At this corner I found a mound of stone with a decayed wooden stake in the center. I set an iron pipe with a brass cap in the mound at the position of the stake.

**9A & 9B** These points are monumented with axle shafts approximately 1" in diameter which stick up approximately 12" in the air in an east - west fence berm. The fence is gone. The axle shafts are firmly set but are of unknown origin.

**10** I set this monument at the position determined by the tangents of Mud Springs Road and the record information in the County Road Survey of that road. The point agrees very well with the projection of the fence and plow lines to the east and west. I found no evidence of the point found by Mr. Gray and his record location does not fit with any possessory lines.

**10A** This corner is monumented by a 5/8" iron rebar with a 2" aluminum cap marked with RLS 1111 only. The monument is firmly in place on the southeast side of a fence corner rock jack.

**11** This corner is monumented by an iron pipe and brass cap set under survey 93-54-C. The cap is in a small mound of stone on the south side of a three way fence intersection and is in good condition.

**12** At this corner I found a mound of stones that appeared to be the corner rock jack of fences running west and north. In the mound I found a basalt stone marked with the letters C S and a "x" on top. It was firmly set over the top of approximately 15" of the decayed remains of the original post. I believe the letters stand for "Corner Stone". It was not of record. I set an iron pipe with a brass cap at the position of the post in a small collar of stone.

**12A** This corner is monumented by an iron pipe and brass cap set by Mr. Dennis Gaylor as seen in county corner certificate 02-269-R. The monument is in good condition.

**12B** At this corner I found a mound of stones with a basalt stone laying in the center marked 1/4 CS. I believe the letters stand for "Corner Stone". It was not of record. I found a rotten post in the ground under the stone. I set a 1" x 24" iron rebar with a 2" aluminum cap 18" in the ground to bedrock and built a mound of stone and earth to the top of the cap.

**12C** This position is the projected location of the closing corner for sections 5 and 6. I did not find the original stone and believe it is in one of the old rock jacks.

**12D** This is the corner of fences running south and east and is the probable location of the closing corner to township 1 south, ranges 28 and 29 east. I set no monuments.

**12E** I found the original stone by Williams firmly set in a mound of stone. I set an iron pipe with a brass cap in a small collar of stone.

**12F** I found the original stone by Williams set at the toe of a small rock outcrop. I set a 1" x 24" iron rebar with a 2" aluminum cap to bedrock and covered it with stone.

**12G** I found the original stone by Williams plainly marked and firmly set on a grassy hillside. There was no other stone in the area. I did not remonument this stone.

**13** This corner position falls inside the fences of a stock drive lane. The Baseline runs along the center of a road for more than 3 miles east of this point. To reestablish this corner I held the closing corners to the west as the best available evidence of the location of the Baseline. I projected the line the record distance to the east from the closing corner to T1S R30E, S5/S6. I set an iron pipe with a brass cap approximately 4" below the surface.

**13A** This closing corner was remonumented in 2002 with an iron pipe with brass cap by Mr. Dennis Gaylor. The monument is in good condition. There used to be a fence line running west from this corner that the landowner, Mr. Les Owen told me he moved to the north to include more land in this particular wheat field.

**13B** This closing corner was remonumented in 2002 with an iron pipe with brass cap by Mr. Dennis Gaylor. The monument is in good condition.

**14 & 15** Both of these corners were remonumented by Mr. David Haddock in previous surveys for Umatilla County. The corners were marked with brass caps on iron pipes in 1997 and 2001. Both of the monuments are in good condition.

## STATE PLANE COORDINATES

The coordinates listed in the table below are NAD 83/91, SPC Oregon North meeting FGCC standards for horizontal order Second, Class I. The units are international feet.

CORNER NUMBER	CORNER DESIGNATION	NORTHING COORDINATE	EASTING COORDINATE	LOCATION
1	2N27A1	739,268.66	8,458,131.77	Northwest corner of T2N, R27E.
2	2N28A1	739,738.78	8,490,187.50	Northwest corner of T2N, R28E.
3	2N29A1	739,849.13	8,521,921.90	Northwest corner of T2N, R29E.
4	2N30A1	740,663.43	8,554,266.13	Northwest corner of T2N, R30E.
5	2N31A1	741,329.60	8,586,430.60	Northwest corner of T2N, R31E.
6	2N27Z1	707,565.72	8,458,488.19	Southwest corner of T2N, R27E.
7	2N27Z1	707,911.45	8,490,644.84	Southwest corner of T2N, R28E.
8	1N29A1	708,055.23	8,522,447.34	Northwest corner of T1N, R29E.
9	1N30A1	708,950.43	8,554,636.39	Northwest corner of T1N, R30E.
10	1N31A1	709,578.47	8,586,723.82	Northwest corner of T1N, R31E.
11	1N31A25	709,945.04	8,618,848.52	Northeast corner of T1N, R31E.
12	1N29Z1	676,786.00	8,522,868.07	Southwest corner of T1N, R29E.
13	1N30Z1	677,174.90	8,555,025.26	Southwest corner of T1N, R30E.
14	1N31Z1	677,774.58	8,587,216.68	Southwest corner of T1N, R31E.
15	1N31Z25	678,190.23	8,619,520.82	Southeast corner of T1N, R31E.

RECEIVED BY  
 Maxey County Surveyor  
 Date 05/27/05  
 Rec'd By JLC  
 No. 1926 D 092

REGISTERED PROFESSIONAL LAND SURVEYOR  
 Stephen K. Haddock  
 OREGON  
 JULY 9, 2001  
 STEPHEN K. HADDOCK  
 5529 S  
 RENEWS 6-30-05

SHEET 2 OF 2

RECEIVED BY  
 Umatilla County Surveyor  
 Date: 05-05  
 Rec'd By: KK  
 No.: 05-171-C

SURVEY FOR UMATILLA COUNTY 3920 WESTGATE PENDLETON, OR 97801 LOCATION: Townships 1 and 2 North Ranges 27 - 31 East	PROJECT No. 04 - 01	SCALE 1" = 6000'
	Project Completed: April, 2005.	WITNESS TREE SURVEYING Stephen K. Haddock, PLS P.O. Box G Pilot Rock, Oregon 97868 (541) 443-2922