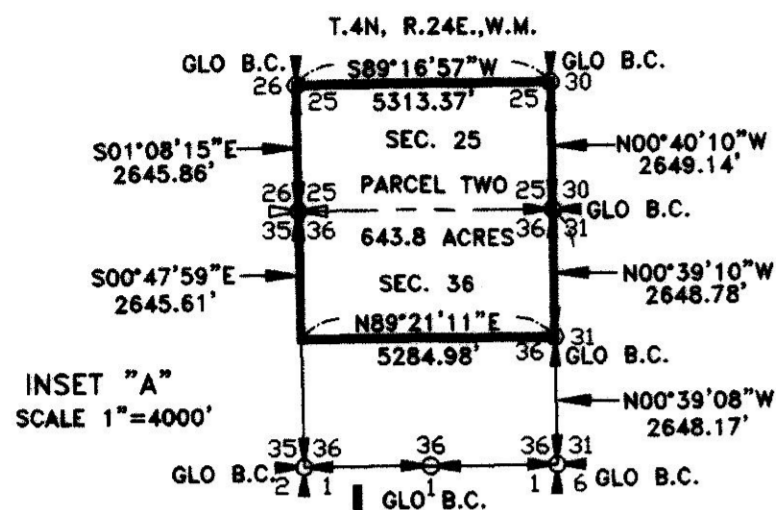


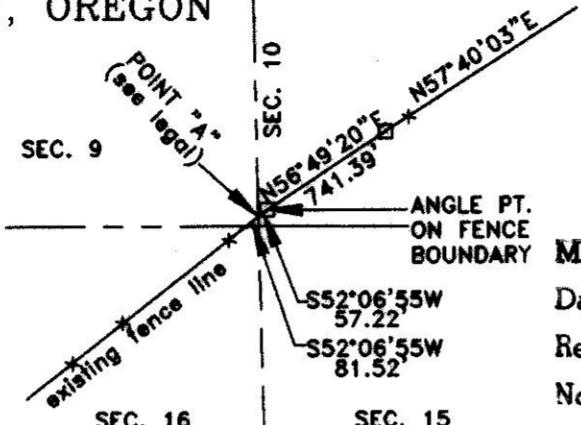
PARTITION PLAT

2002-6

A PORTION OF PARCEL 3, PARTITION PLAT 2001-06
 LOCATED IN PORTIONS OF TOWNSHIPS 2 & 3 & 4 NORTH
 RANGES 22, 23 & 24 EAST OF THE WILLAMETTE MERIDIAN
 MORROW COUNTY AND GILLIAM COUNTY, OREGON

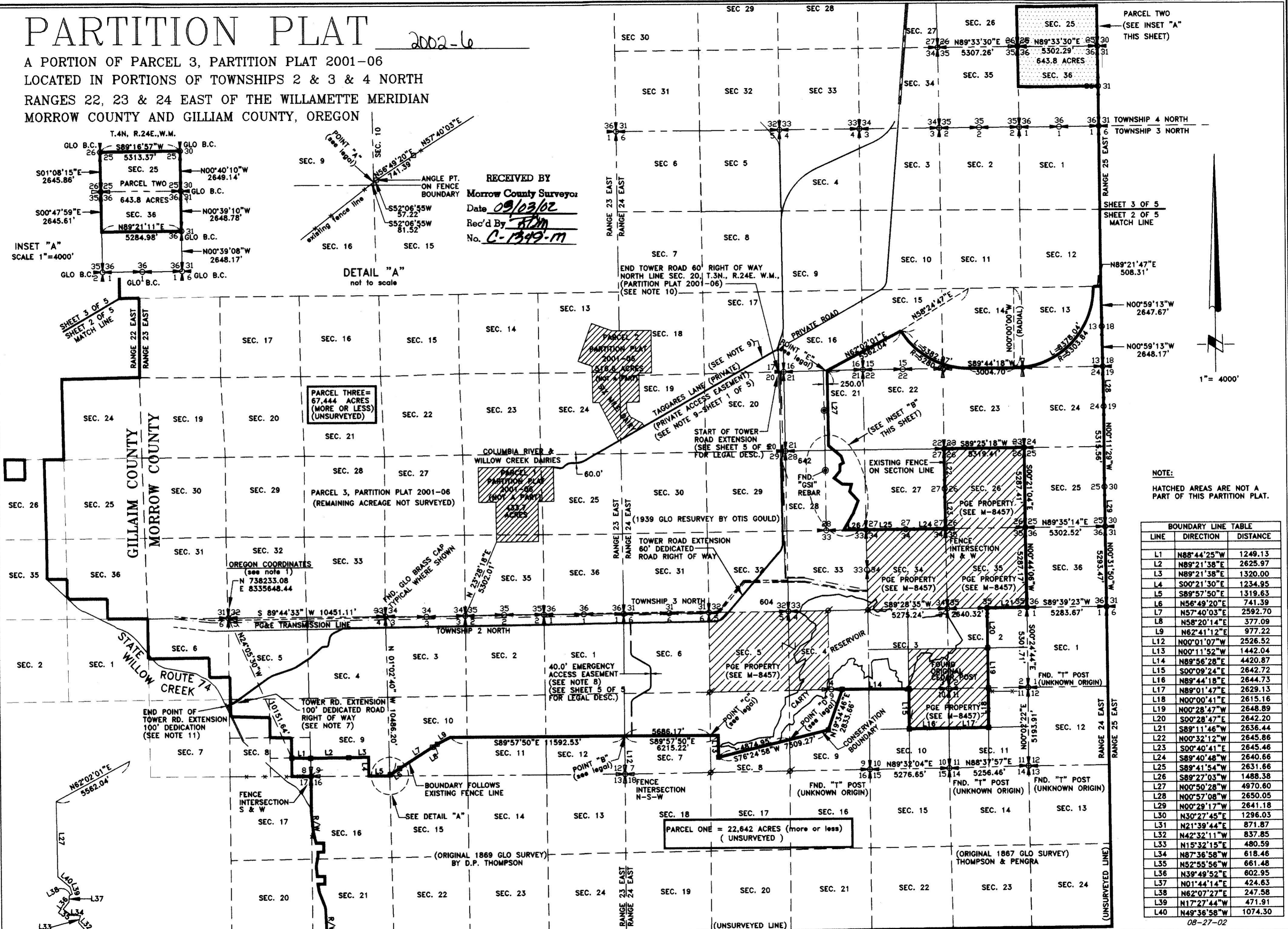


INSET "A"
SCALE 1"=4000'



DETAIL "A"
not to scale

RECEIVED BY
 Morrow County Surveyor
 Date 09/03/02
 Rec'd By ADM
 No. C-1349-M

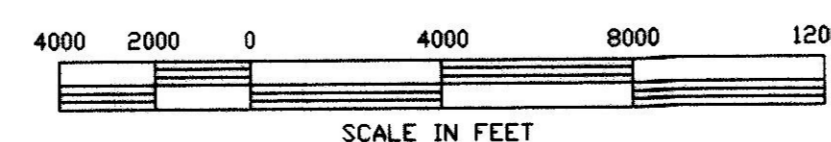


NOTE:
 HATCHED AREAS ARE NOT A
 PART OF THIS PARTITION PLAT.

LINE	DIRECTION	DISTANCE
L1	N88°44'25"W	1249.13
L2	N89°21'38"E	2625.97
L3	N89°21'38"E	1320.00
L4	S00°21'30"E	1234.95
L5	S89°57'50"E	1319.63
L6	N56°49'20"E	741.39
L7	N57°40'03"E	2592.70
L8	N58°20'14"E	377.09
L9	N62°41'12"E	977.22
L12	N00°01'07"W	2526.52
L13	N00°11'52"W	1442.04
L14	N89°56'28"E	4420.87
L15	S00°09'24"E	2642.72
L16	N89°44'18"E	2644.73
L17	N89°01'47"E	2629.13
L18	N00°00'41"E	2615.16
L19	N00°28'47"W	2648.89
L20	S00°28'47"E	2642.20
L21	S89°11'46"W	2636.44
L22	N00°32'12"W	2645.86
L23	S00°40'41"E	2645.46
L24	S89°40'48"W	2640.66
L25	S89°41'54"W	2631.66
L26	S89°27'03"W	1488.38
L27	N00°50'28"W	4970.60
L28	N00°57'08"W	2650.05
L29	N00°29'17"W	2641.18
L30	N30°27'45"E	1296.03
L31	N21°39'44"E	871.87
L32	N42°32'11"W	837.85
L33	N15°32'15"E	480.59
L34	N87°36'58"W	618.46
L35	N52°55'56"W	661.48
L36	N39°49'52"E	602.95
L37	N01°44'14"E	424.63
L38	N62°07'27"E	247.58
L39	N17°27'44"W	471.91
L40	N49°36'58"W	1074.30

INSET "B"
SCALE 1"=4000'

Guy S. Wayne
 EXACT DUPLICATE OF ORIGINAL AS RECORDED



RSA ROGERS SURVEYING INC.
 803 COLUMBIA PARK TRAIL
 RICHLAND, WA. 99352
 PHONE (509) 627-5656
 FAX: (509) 627-2994

CLIENT	B.A.I.C., INC.	JOB	30801
PROJECT	PARTITION PLAT THREE MILE CANYON FARMS		
DRN. BY	GBW	SCALE 1"= 4000'	F. B. NO. NONE
APPROVED	GBW	DATE 06/07/02.	VERSION - ACAD14
			FILE: 30801-PP
			SHEET 2 OF 5