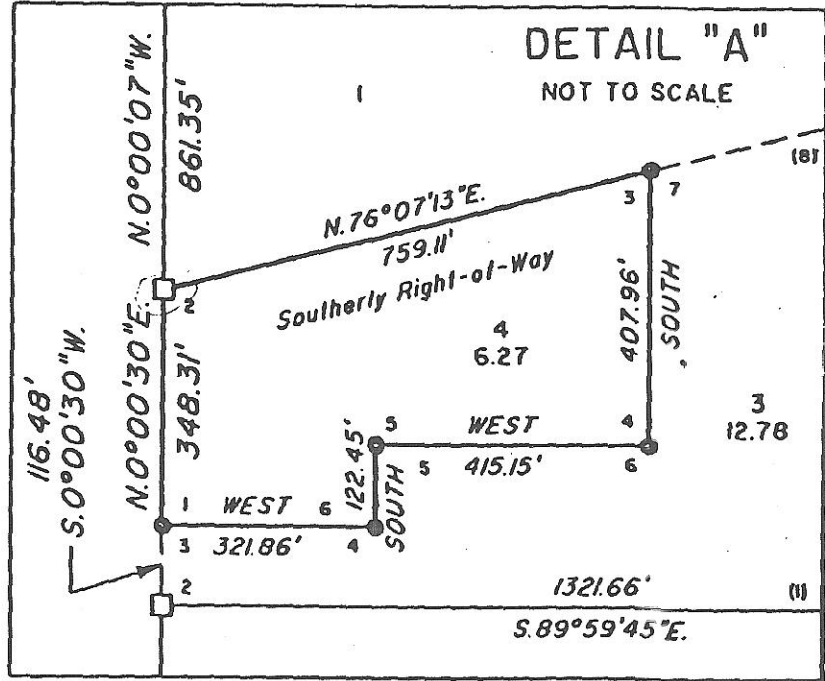


TOWNSHIP 5 NORTH, RANGE 27 EAST, OF THE WILLAMETTE MERIDIAN, OREGON

METES-AND-BOUNDS SURVEY



NOTE:

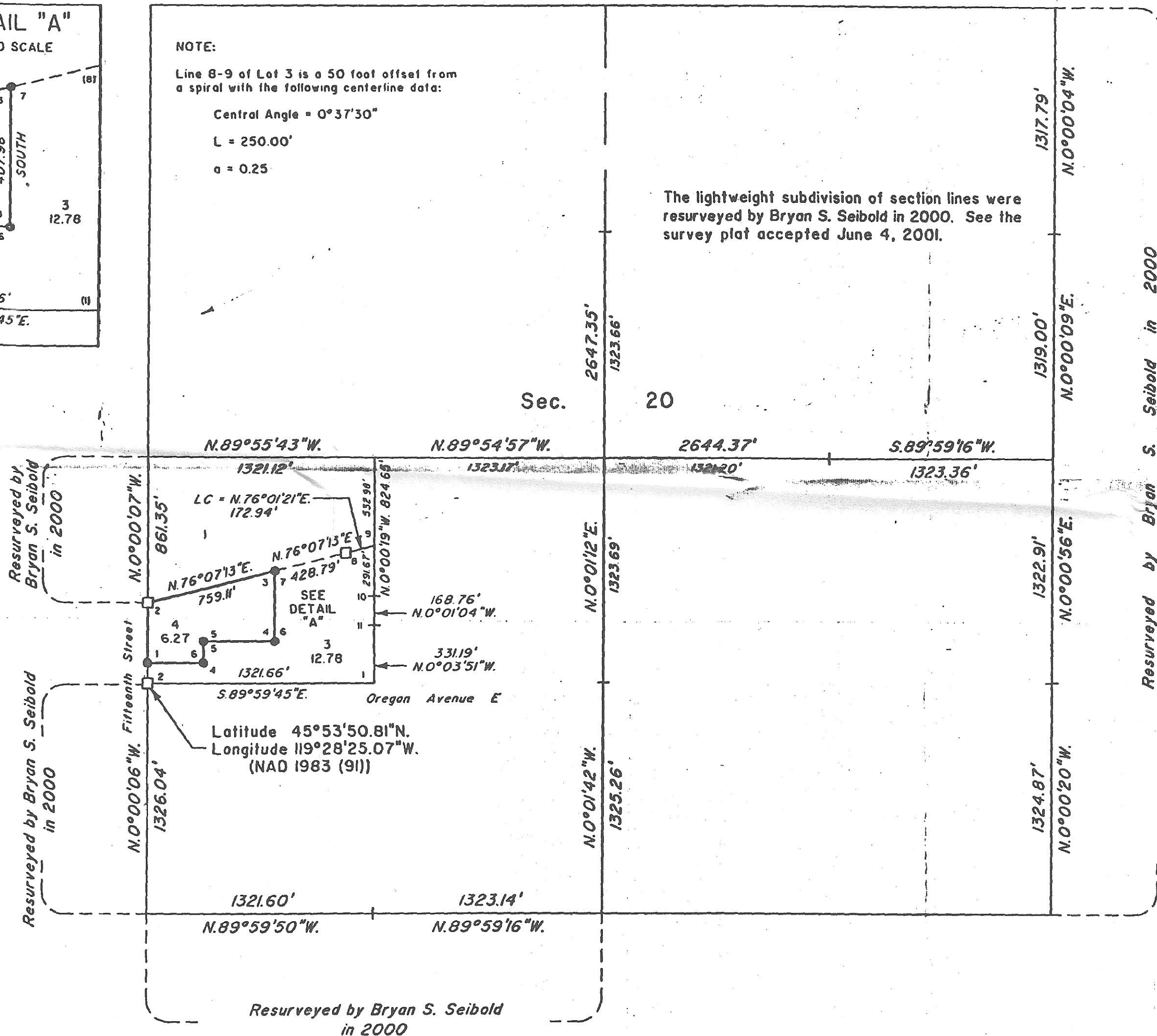
Line 8-9 of Lot 3 is a 50 foot offset from a spiral with the following centerline data:

Central Angle = $0^{\circ}37'30''$

$L = 250.00'$

$a = 0.25$

The lightweight subdivision of section lines were resurveyed by Bryan S. Seibold in 2000. See the survey plat accepted June 4, 2001.



A history of surveys is contained in the field notes.

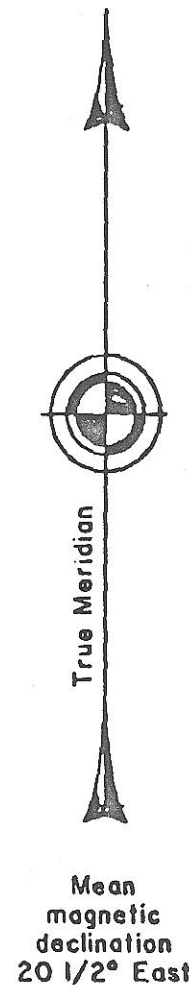
This plat represents a metes-and-bounds survey of Lot 4 in section 20, T. 5 N., R. 27 E., Willamette Meridian, Oregon.

Measured distances and directions have been adjusted by Cadastral Measurement Management for Windows (WinCMM), computer software that incorporates a least squares adjustment routine. The adjusted bearings and distances are reported to the nearest second and 0.01 foot.

Except as shown hereon, the lottings and areas are as shown on the plat approved December 7, 1861, and the plat accepted June 4, 2001.

The survey was executed by Bryan S. Seibold, Cadastral Surveyor, beginning October 23, 2001, and completed October 30, 2001, pursuant to Supplemental Special Instructions dated October 22, 2001, under Group Number 1932, Oregon.

There is no timber.



LEGEND

- Corner previously established
- Corner established this survey

UNITED STATES DEPARTMENT OF THE INTERIOR
BUREAU OF LAND MANAGEMENT

Portland, Oregon February 11, 2002

This plat is strictly conformable to the approved field notes, and the survey, having been correctly executed in accordance with the requirements of law and the regulations of this Bureau, is hereby accepted.

For the Director

Mary J. M. Hartzel
Chief Cadastral Surveyor of Oregon

RECEIVED BY

Morrow County Surveyor

Date 02/12/02

Rec'd By RJM

No. C-1341-M

