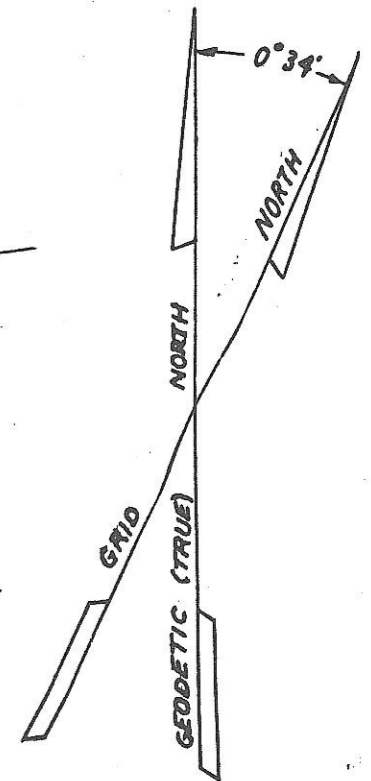


SOUTH BOARDMAN

MORROW COUNTY, OREGON
 S 1/2 SW 1/4 OF SECTION 9, T.4N.-R.25E., W.M.
 ENGINEERS: CORNELL, HOWLAND, HAYES & MERRYFIELD
 SURVEYOR: WAYNE O. HARRIS
 SCALE: 1" = 100'

RECEIVED BY
 Morrow County Surveyor
 Date 02/02/02
 Rec'd By WJM
 No. C-1332-M
1332

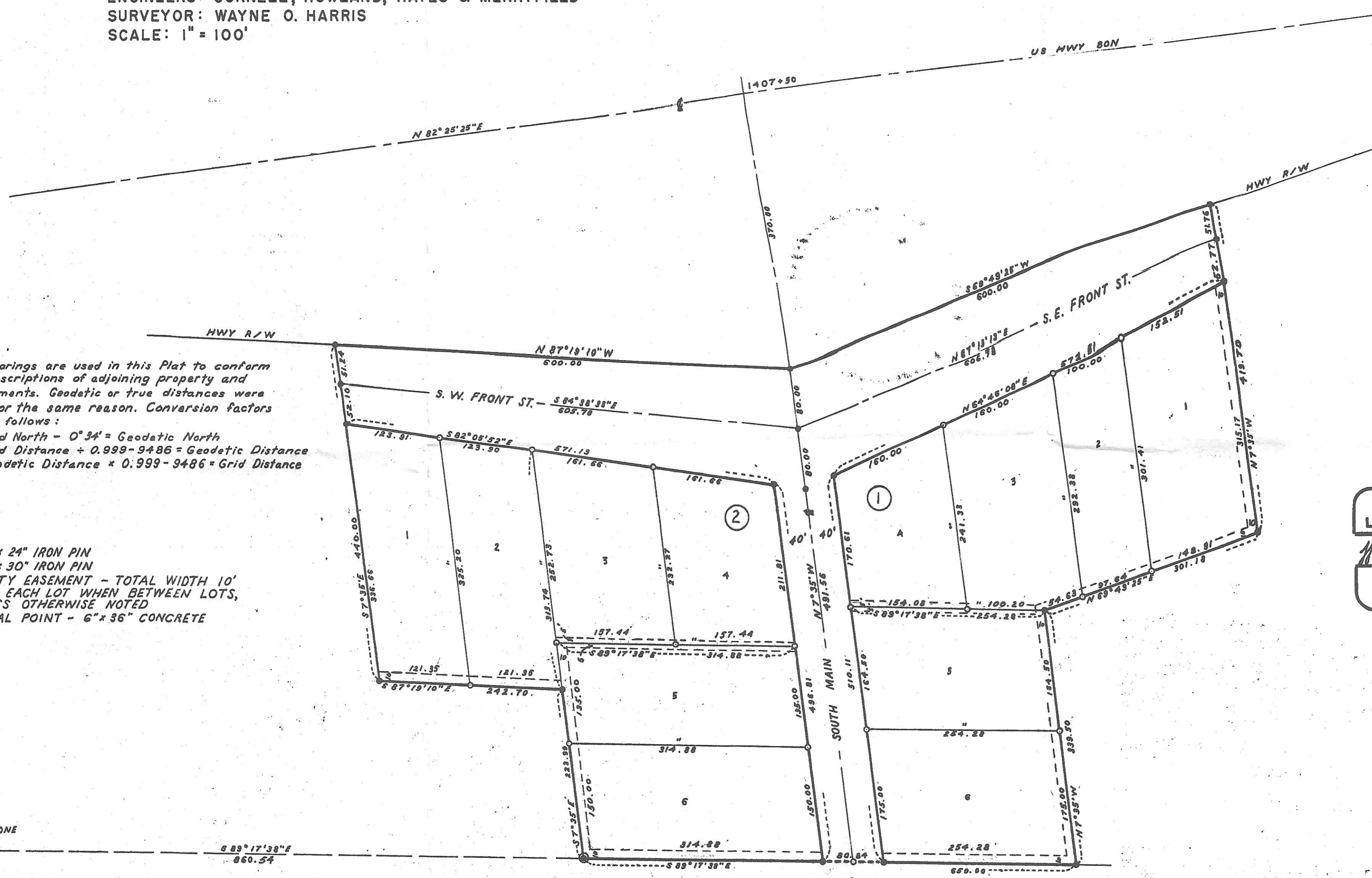


NOTE:

Grid Bearings are used in this Plat to conform with descriptions of adjoining property and developments. Geodetic or true distances were used for the same reason. Conversion factors are as follows:
 Grid North - 0°34' = Geodetic North
 Grid Distance + 0.999-9486 = Geodetic Distance
 Geodetic Distance * 0.999-9486 = Grid Distance

LEGEND:

- 1/2" x 24" IRON PIN
- 5/8" x 30" IRON PIN
- UTILITY EASEMENT - TOTAL WIDTH 10' 5" ON EACH LOT WHEN BETWEEN LOTS, UNLESS OTHERWISE NOTED
- INITIAL POINT - 6" x 36" CONCRETE



REGISTERED
OREGON
 LAND SURVEYOR
Wayne O. Harris
 MAY 6, 1999
 WAYNE O. HARRIS
 346

