

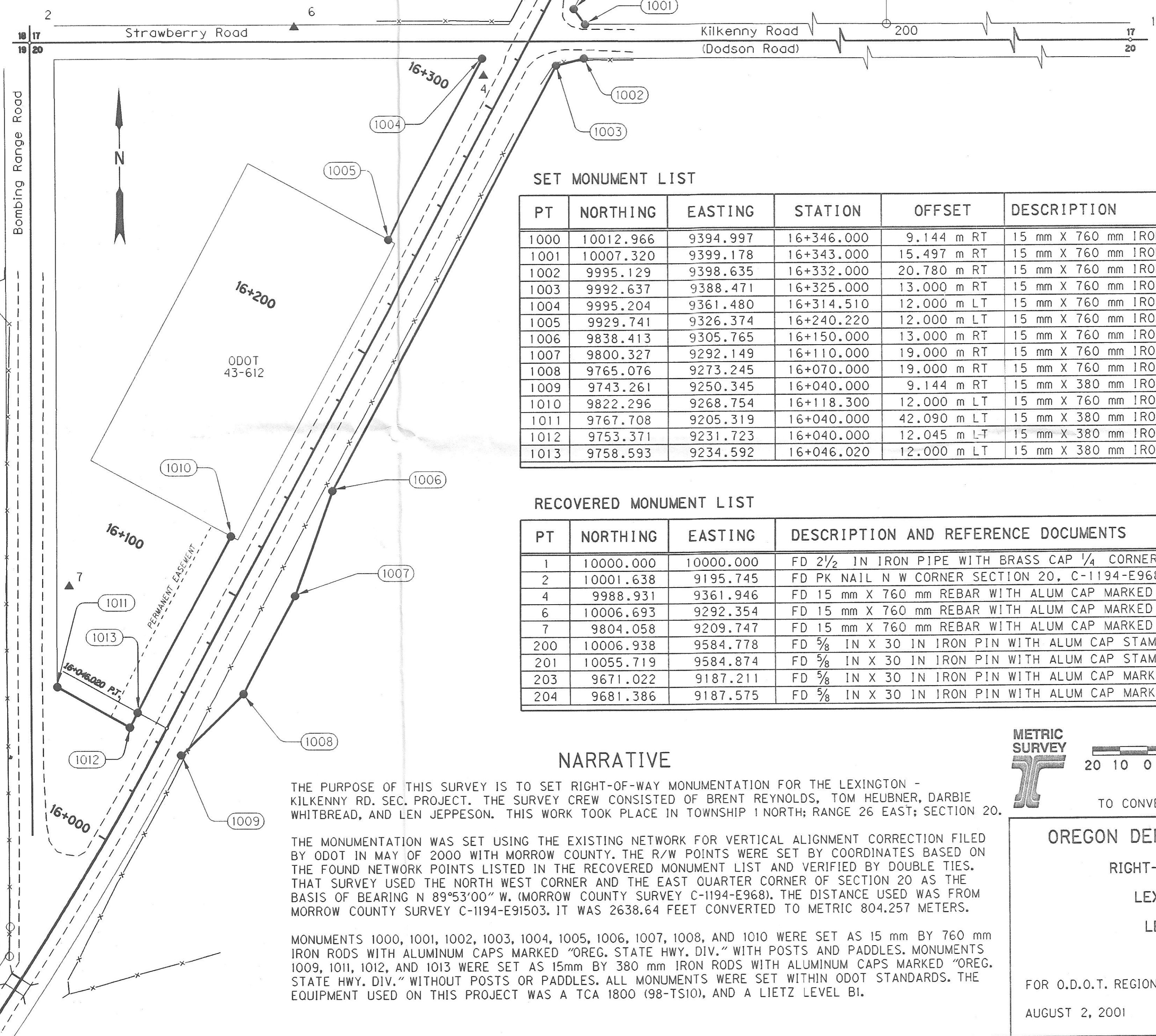
SEC. 20 T.1 N. R.26 E. W .M.

RECEIVED BY
 Morrow County Surveyor
 Date 11/01/01
 Rec'd By RJM
 No. C-1325-M
 Folder No. 1325

REGISTERED
 PROFESSIONAL
 LAND SURVEYOR
L. W. Eddy
 OREGON
 FEBRUARY 14, 1988
 KEN W. EDDY
 2129
 EXPIRES 12/31/01

LEGEND

- SET MONUMENT
- FD MONUMENT
- ▲ FD NETWORK POINT



SET MONUMENT LIST

PT	NORTHING	EASTING	STATION	OFFSET	DESCRIPTION
1000	10012.966	9394.997	16+346.000	9.144 m RT	15 mm X 760 mm IRON ROD W ALUM CAP "OREG. STATE HWY. DIV."
1001	10007.320	9399.178	16+343.000	15.497 m RT	15 mm X 760 mm IRON ROD W ALUM CAP "OREG. STATE HWY. DIV."
1002	9995.129	9398.635	16+332.000	20.780 m RT	15 mm X 760 mm IRON ROD W ALUM CAP "OREG. STATE HWY. DIV."
1003	9992.637	9388.471	16+325.000	13.000 m RT	15 mm X 760 mm IRON ROD W ALUM CAP "OREG. STATE HWY. DIV."
1004	9995.204	9361.480	16+314.510	12.000 m LT	15 mm X 760 mm IRON ROD W ALUM CAP "OREG. STATE HWY. DIV."
1005	9929.741	9326.374	16+240.220	12.000 m LT	15 mm X 760 mm IRON ROD W ALUM CAP "OREG. STATE HWY. DIV."
1006	9838.413	9305.765	16+150.000	13.000 m RT	15 mm X 760 mm IRON ROD W ALUM CAP "OREG. STATE HWY. DIV."
1007	9800.327	9292.149	16+110.000	19.000 m RT	15 mm X 760 mm IRON ROD W ALUM CAP "OREG. STATE HWY. DIV."
1008	9765.076	9273.245	16+070.000	19.000 m RT	15 mm X 760 mm IRON ROD W ALUM CAP "OREG. STATE HWY. DIV."
1009	9743.261	9250.345	16+040.000	9.144 m RT	15 mm X 380 mm IRON ROD W ALUM CAP "OREG. STATE HWY. DIV."
1010	9822.296	9268.754	16+118.300	12.000 m LT	15 mm X 760 mm IRON ROD W ALUM CAP "OREG. STATE HWY. DIV."
1011	9767.708	9205.319	16+040.000	42.090 m LT	15 mm X 380 mm IRON ROD W ALUM CAP "OREG. STATE HWY. DIV."
1012	9753.371	9231.723	16+040.000	12.045 m LT	15 mm X 380 mm IRON ROD W ALUM CAP "OREG. STATE HWY. DIV."
1013	9758.593	9234.592	16+046.020	12.000 m LT	15 mm X 380 mm IRON ROD W ALUM CAP "OREG. STATE HWY. DIV."

RECOVERED MONUMENT LIST

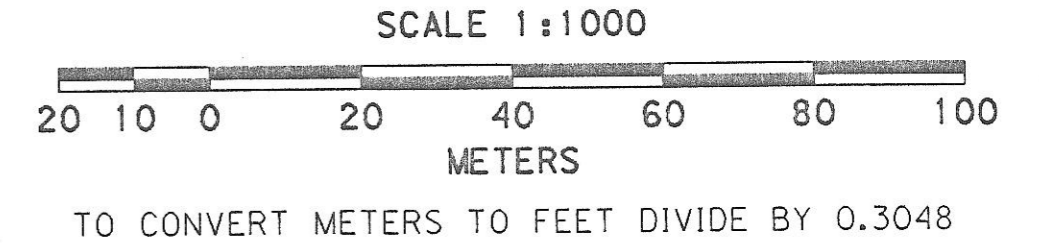
PT	NORTHING	EASTING	DESCRIPTION AND REFERENCE DOCUMENTS
1	10000.000	10000.000	FD 2 1/2 IN IRON PIPE WITH BRASS CAP 1/4 CORNER 17 20, C-1194-E968
2	10001.638	9195.745	FD PK NAIL N W CORNER SECTION 20, C-1194-E968
4	9988.931	9361.946	FD 15 mm X 760 mm REBAR WITH ALUM CAP MARKED "OSHD NET PT 4"
6	10006.693	9292.354	FD 15 mm X 760 mm REBAR WITH ALUM CAP MARKED "OSHD NET PT 6"
7	9804.058	9209.747	FD 15 mm X 760 mm REBAR WITH ALUM CAP MARKED "OSHD NET PT 7"
200	10006.938	9584.778	FD 5/8 IN X 30 IN IRON PIN WITH ALUM CAP STAMPED PLS 933, C-1194-E968
201	10055.719	9584.874	FD 5/8 IN X 30 IN IRON PIN WITH ALUM CAP STAMPED PLS 933, C-1194-E968
203	9671.022	9187.211	FD 5/8 IN X 30 IN IRON PIN WITH ALUM CAP MARKED "OSHD"
204	9681.386	9187.575	FD 5/8 IN X 30 IN IRON PIN WITH ALUM CAP MARKED "OSHD"

NARRATIVE

THE PURPOSE OF THIS SURVEY IS TO SET RIGHT-OF-WAY MONUMENTATION FOR THE LEXINGTON - KILKENNY RD. SEC. PROJECT. THE SURVEY CREW CONSISTED OF BRENT REYNOLDS, TOM HEUBNER, DARBIE WHITBREAD, AND LEN JEPPESON. THIS WORK TOOK PLACE IN TOWNSHIP 1 NORTH; RANGE 26 EAST; SECTION 20.

THE MONUMENTATION WAS SET USING THE EXISTING NETWORK FOR VERTICAL ALIGNMENT CORRECTION FILED BY ODOT IN MAY OF 2000 WITH MORROW COUNTY. THE R/W POINTS WERE SET BY COORDINATES BASED ON THE FOUND NETWORK POINTS LISTED IN THE RECOVERED MONUMENT LIST AND VERIFIED BY DOUBLE TIES. THAT SURVEY USED THE NORTH WEST CORNER AND THE EAST QUARTER CORNER OF SECTION 20 AS THE BASIS OF BEARING N 89°53'00" W. (MORROW COUNTY SURVEY C-1194-E968). THE DISTANCE USED WAS FROM MORROW COUNTY SURVEY C-1194-E91503. IT WAS 2638.64 FEET CONVERTED TO METRIC 804.257 METERS.

MONUMENTS 1000, 1001, 1002, 1003, 1004, 1005, 1006, 1007, 1008, AND 1010 WERE SET AS 15 mm BY 760 mm IRON RODS WITH ALUMINUM CAPS MARKED "OREG. STATE HWY. DIV." WITH POSTS AND PADDLES. MONUMENTS 1009, 1011, 1012, AND 1013 WERE SET AS 15mm BY 380 mm IRON RODS WITH ALUMINUM CAPS MARKED "OREG. STATE HWY. DIV." WITHOUT POSTS OR PADDLES. ALL MONUMENTS WERE SET WITHIN ODOT STANDARDS. THE EQUIPMENT USED ON THIS PROJECT WAS A TCA 1800 (98-TS10), AND A LIETZ LEVEL BI.



OREGON DEPARTMENT OF TRANSPORTATION
 RIGHT-OF-WAY MONUMENTATION MAP
 LEXINGTON-KILKENNY RD. SEC.
 LEXINGTON - ECHO HIGHWAY
 MORROW COUNTY
 FOR O.D.O.T. REGION 5 80788 KIK ROAD, HERMISTON, OR 97838
 AUGUST 2, 2001 SHEET 1 OF 1