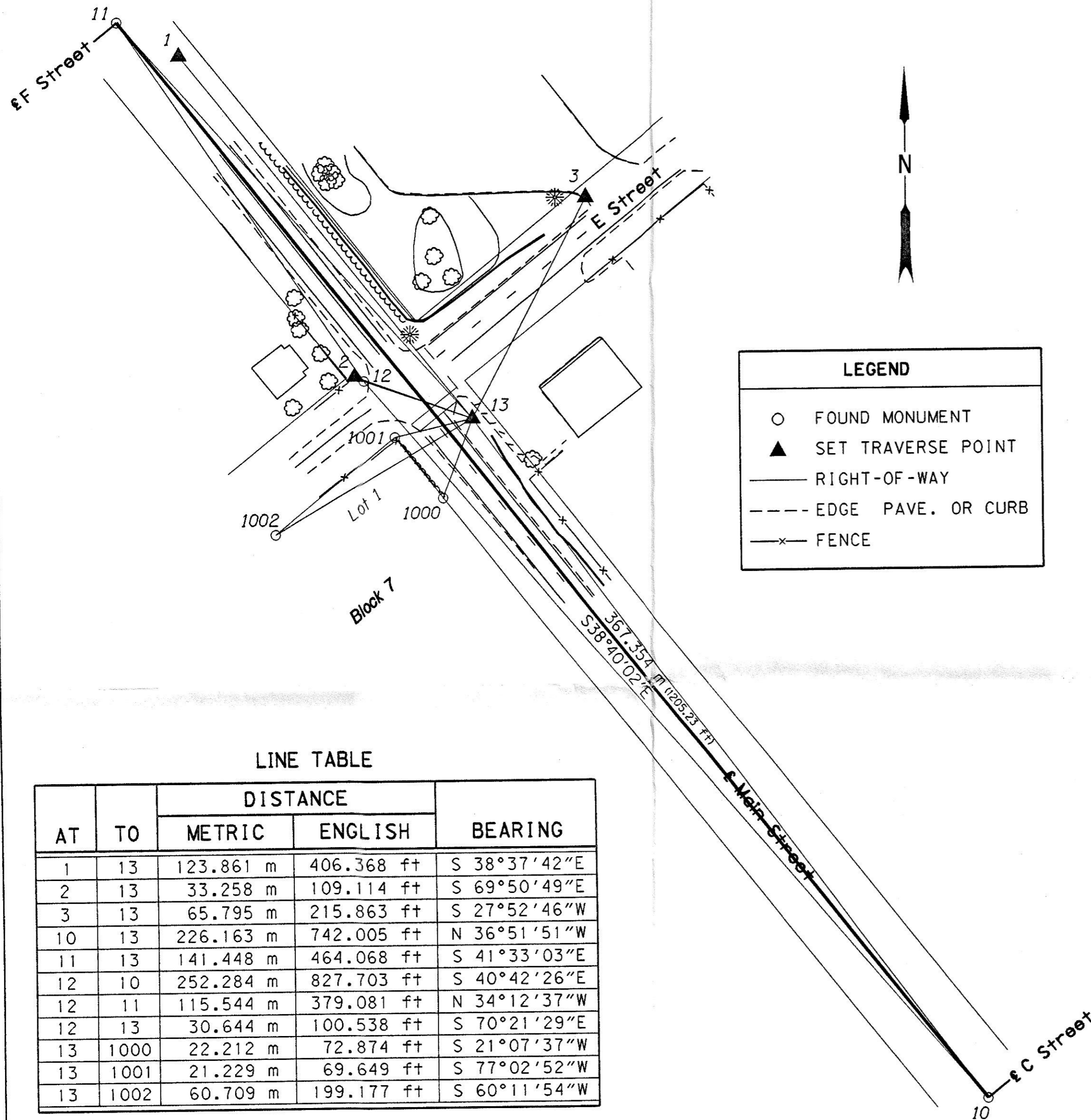


SE 1/4 SEC. 27 T.1 S. R.25 E. W .M.



NARRATIVE

THE PURPOSE OF THIS SURVEY IS TO ESTABLISH NETWORK AND MAPPING FOR THE INTERSECTION OF HEPPNER HIGHWAY AND LEXINGTON - ECHO HIGHWAY AT MILE POINT 0.00 IN LEXINGTON. THIS SURVEY TOOK PLACE IN TOWNSHIP 1 SOUTH; RANGE 25 EAST; SECTION 27.

THE SURVEY CREW CONSISTED OF KEN FICKLE, DARBIE WHITBREAD AND MIKELL GALLOWAY. THE MAPPING FIELD WORK STARTED ON 08-31-99 AND ENDED ON 09-01-99.

THE NETWORK SURVEY WAS DONE BY BRENT REYNOLDS AND JOEL ESTRADA ON 02-08-00. THE POINTS USED BY THE CREW IN AUGUST WERE TIED AS MAPPING POINTS FROM THE NETWORK.

NETWORK POINT 10 IS A 2 1/2" IRON PIPE WITH BRASS CAP. THIS POINT IS THE CENTER OF MAIN STREET AT THE INTERSECTION OF C STREET FROM MORROW COUNTY SURVEY NO. C-294-K-610.

NET-WORK POINT 11. A 2 1/2" IRON PIPE WITH BRASS CAP. THIS POINT IS THE CENTER OF MAIN STREET AT THE INTERSECTION OF F STREET FROM MORROW COUNTY SURVEY NO. C-294-K-610.

NETWORK POINT 12 IS A 25MM IRON PIN OF UNKNOWN ORIGIN. THIS POINT IS IN THE NORTH WEST CORNER OF THE INTERSECTION OF THE HEPPNER HIGHWAY AND LEXINGTON ECHO HIGHWAY.

NETWORK POINT 13 IS A HUB AND TACK IN THE SOUTH EAST CORNER OF THE INTERSECTION.

THIS SURVEY USED EXISTING MONUMENTS FROM MORROW COUNTY SURVEY NO. C-294-K-610. THE BASIS OF BEARING ARE THE FOUND MAIN STREET CENTERLINE MONUMENTS. THE BEARING IS S 38°40'02"E, AND THE DISTANCE IS 1205.23 FT. (367.354 METERS).

NET POINT 11, WAS ASSIGNED LOCAL COORDINATES (NORTH 20,000.000, EAST 40,000.000). NET POINT 10, THE COORDINATES WERE CALCULATED FROM BASIS OF BEARING AND RECORD DISTANCE.

HORIZONTAL LEAST SQUARES ADJUSTMENT WAS THEN CALCULATED IN LISCAD TO ESTABLISH CO-ORDINATES FOR OTHER NETWORK POINTS. THE LEAST SQUARES ADJUSTMENT METHOD PRODUCED ANGULAR AND DISTANCE RESIDUALS (THE AMOUNT THE FIELD OBSERVED MEASUREMENTS WERE CHANGED DUE TO THE ADJUSTMENT). THE ANGULAR RESIDUALS AVERAGED 1 SECOND, WITH THE GREATEST RESIDUAL BEING 2 SECONDS. THE DISTANCE RESIDUALS AVERAGED 14 MM THE GREATEST BEING 18 MM. THE NETWORK MEETS ODOT STANDARD.

THE VERTICAL DATA FOR THIS PROJECT WAS ASSUMED AT MAPPING POINT 2 = 80.000 METERS.

THE DATA WAS OBTAINED, EDITED AND CONVERTED TO A TERRAIN MODEL BY LISCAD (4.1).

THE EQUIPMENT USED ON THIS PROJECT WAS A TCA 1800 (98-TS10).

RIGHT OF WAY DATA: RECORDED SURVEY; MORROW COUNTY SURVEY NO. 294-K-610, MORROW COUNTY SURVEY NO. PARM.

THE RIGHT OF WAY WAS ESTABLISHED FROM THE ABOVE SURVEYS USING THE WIDTHS CALLED OUT. THE PROPERTY PINS AND EXISTING FEATURES (FENCES) WERE USED.

NETWORK POINTS SET DURING THE SURVEY DO NOT REPRESENT PROPERTY OR R/W LINES.

LINE TABLE

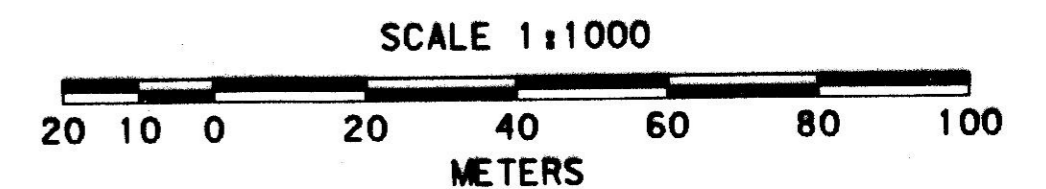
AT	TO	DISTANCE		BEARING
		METRIC	ENGLISH	
1	13	123.861 m	406.368 ft	S 38°37'42"E
2	13	33.258 m	109.114 ft	S 69°50'49"E
3	13	65.795 m	215.863 ft	S 27°52'46"W
10	13	226.163 m	742.005 ft	N 36°51'51"W
11	13	141.448 m	464.068 ft	S 41°33'03"E
12	10	252.284 m	827.703 ft	S 40°42'26"E
12	11	115.544 m	379.081 ft	N 34°12'37"W
12	13	30.644 m	100.538 ft	S 70°21'29"E
13	1000	22.212 m	72.874 ft	S 21°07'37"W
13	1001	21.229 m	69.649 ft	S 77°02'52"W
13	1002	60.709 m	199.177 ft	S 60°11'54"W

NETWORK POINT COORDINATE TABLE

PT ID	NORTHING	EASTING	DESCRIPTION
1	19990.894	40016.509	SET PK
2	19905.591	40062.610	SET HUB AND TACK
3	19952.292	40124.598	SET PK
10	19713.175	40229.521	FND 2 1/2" IRON PIPE WITH BRASS CAP, SURVEY NO. C-294-K-610
11	20000.000	40000.000	FND 2 1/2" IRON PIPE WITH BRASS CAP, SURVEY NO. C-294-K-610
12	19904.433	40064.972	FND 25 MM X 760 MM IRON PIN
13	19894.133	40093.831	SET HUB AND TACK
1000	19873.414	40085.825	FND 5/8" X 30" IRON REBAR WITH ALUMINUM CAP MARKED PLS 933
1001	19889.375	40073.143	FND 5/8" X 30" IRON REBAR WITH ALUMINUM CAP MARKED PLS 933
1002	19863.961	40041.151	FND 5/8" X 30" IRON REBAR WITH ALUMINUM CAP MARKED PLS 933

RECEIVED BY
Morrow County Surveyor
Date 01/31/01
Rec'd By [Signature]
No. C-1294-11
Folder 1294

REGISTERED PROFESSIONAL LAND SURVEYOR
[Signature]
OREGON
FEBRUARY 14, 1985
KEN W. EDDY
2129
EXPIRES 02/31/01



TO CONVERT METERS TO FEET DIVIDE BY 0.3048

OREGON DEPARTMENT OF TRANSPORTATION
HORIZONTAL CONTROL, RECOVERY, AND RETRACEMENT MAP
JCT. HEPPNER HWY. - BOMBING RANGE ROAD
LEXINGTON - ECHO HIGHWAY
MORROW COUNTY

FOR O.D.O.T. REGION 5 80788 KIK RD., HERMISTON ,OR. 97838

APRIL 19, 2000

SHEET 1 OF 1