

Friday Oct. 27 1922

Leaving for Carboni Lizard &  
Sam M. Callaway.

Starting on 1/4 sec Rd. Sec. 12-13  
of 3d R 20 E 21 N

- 20.00 ch. set trap
- 24.00 ch. fence running east  
and NW. & south.
- 25.00 top of ridge  
from this point down to  
of fence fence line shows  
on next ridge east direction line
- 39.00 ch. bottom of draw.
- 40.00 fence 4 1/2 mi.
- 41.64 Crispat fence corner at  
SE cor of Lewis land  
at supposed center of Sec 13
- 80.12 ch. find the 1/4 sec sta. just a little  
west of sandstone line.  
west of my ground and of station  
called

65  
Book 12

place station 6512X / 1000 ft N or W  
at fence corner west NE of station



Put up on 14 in. Tolman  
 Rec. 13724 of 3 AR 265  
 and same 71, 88050'E.  
 producing line as shown  
 to west end of hill.

30.00 Top of hill

40.00 ch. at top of hill & Rec.

13-24 18-19 of 3 AR 26-27E

From this point find the  
 true error on N.E. slope of  
 hill on track

A 12° 15'E. 2.09 ch.

The error, as a stone 7x8x15  
 with 1/4 in. wide edge, stone  
 entirely buried around of  
 rock found around it.

Some marks on west side of  
 corner stone, put chisel and  
 on bottom of hole and replace  
 corner stone & brick around  
 of stone summit, also dig  
 four pits.



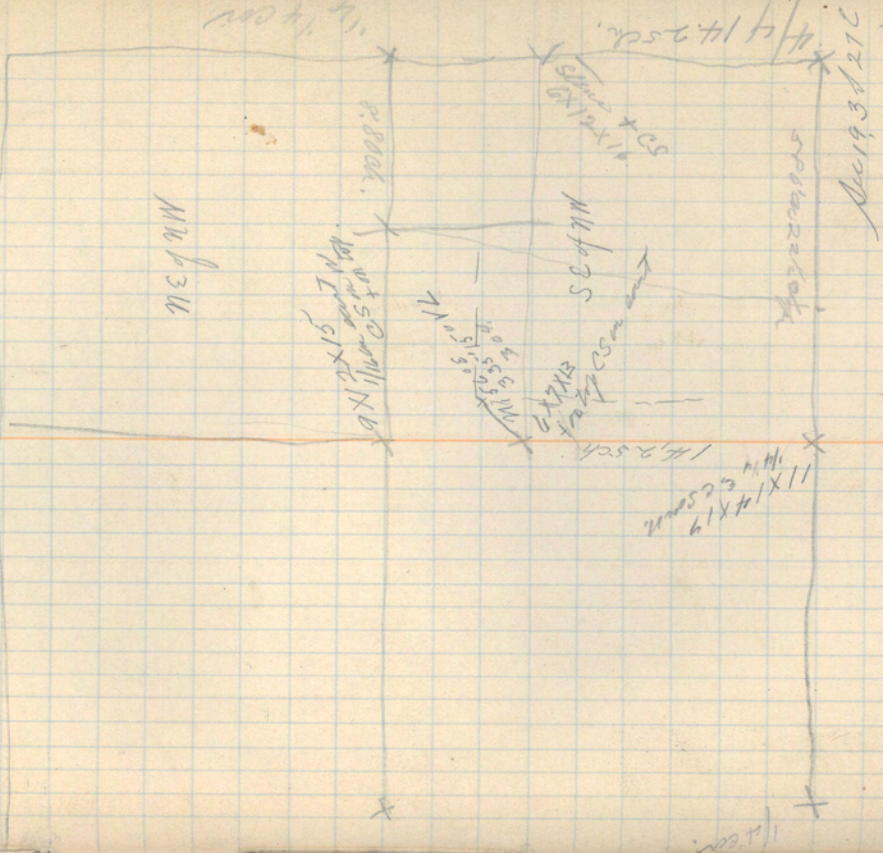
Book 2, Page 283  
A. M. W. & Co.  
Mr. E. H. Allbridge

Commencing at the center  
of the 19, Tp. 3 South Range 27 E  
West 80 rods  
North 57 rods  
East 80 rods  
south 57 rods to beginning point

Dated Mar. 23, 1888

4/15/19  
14/14

14.25 ch. 67  
Book 12





11,20 | 42.60  
 4120  
 14000  
 12560  
 144000  
 2128  
 16030

Set 2x18-19 2x20 26-27 E.  
 and run N 89° W E.  
 Descend.

20.00 set trap 1/4 sec.

26.23 1/2 fence on east side of bottom land.

21.20 creek N x N.

35.23 fence about side of county road  
ascend.

42.65 cl the 1/4 cor, lot sec. 18.19  
Sp. 3-18-27 E. 3 lbs with garden time  
stone setting partly in ground

R. 21.92 set a  
 marked for the N E cor of  
 NW 1/4 of sec 19

2192080  
 1981216  
 16360  
 2120



Set up on line to Dec. 13-24-19  
and run south on Township  
line

20.66 ch a run of stone 21.5 mps east  
of random line. a stone 45x11  
and CS.

23.00 ch The corner of fence 94% the  
east of random line.

41.00 set trap 14 m. from

all stone lying here in  
arch.

58.96 2811 fence 1.34 ch east  
of random line.

60.89 find all CS stone 26 the east  
of random line.

4249 stake

78.90 ch from the point find ed to 24-25-19-20  
P. 45030 E. 1.31 ch. a stone  
4x5x12 mtd 1111 on south 1100 unit

79.85 ch No rock Dec. 4. 25-19-20 set a  
point 90 the east of random line.

P. 45030 E. 1.31 ch  
Set

7.25  
1.31  
7.25  
217.5  
72.5  
949.75

set stone 22.5 the east and 3 3/4 the north  
of trap 1/4 ch. CS. extra stone 45x12  
mtd 1/4 the top CS on east find some  
of the wood st.

set stone 45 the east and 7 1/2 the north

find 1/4 ch a stone 45x13 mtd 1/4 ch  
CS on west 4 m top corner a limestone  
on hillside fence with 2.5 the east 20 feet

of stone 102 the west of fence  
set stone 67 1/2 the east. and 11 1/2 the north

set a stone 45x14 mtd 1/4 ch on east  
CS on south + north

41.90  
2.25 the 41.15  
3.75 the

7890 69  
9497  
7985 Book 12

7  
1  
45  
42  
30  
39



A. 81° 50' E 2.35

Set up on the end also  
21-25 19-30 Dip 50 P 21-27 E.  
and in a random line in S

W. 89° 21' E. on line N 19-30

6.30 Both of clear, showing M E.  
20.00 set line of 14 pins

32.24 74 0 pins

34.50 70 pins of quarter

36.86 74 0 big pins pins

40.00 set line 1/4 cor. from this point  
find the 1/4 cor. on a point. A. 81° 50' E.  
2.55 ch.

Dive line 71.9 19° 55' E.

42.53 ch the 1/4 cor N 71° 19' 30" at a point  
35.7 lbs earth of random line

Full water system 41.0000  
This corner was rechecked by  
D. W. Reed May 23, 1912

Set line 1.783 ch east and 18 lbs weight  
a stone 6 x 1 1/4 x 2 1/4 inch 1/4 weight  
ES on south 700 ft mound of distance  
measured at about 175 lbs weight of  
ridge

41.00, 42.53, 21.00, x

42.53  
42.53  
85.06  
41 89 3.15 } 21.783

73  
41  
32  
287  
343  
228  
150



Set trap on 1/4 cow NW 1/4 00

Sp 3 A R 27 E and

random line north

17.180 ch fence NE x 200,

20.000 ch Saline fork of Yellow Creek

20.500 ch fence at south side of

Quartzfeger Road

across apple

24.00 ch to fence at north end of apple

south end of C. Road

249.1 ch to fence north end of C. Road

at east edge of corner cut.

39.99 E 4 nest fence 90 ch east of

stone cut at fence corner

40.00 set trap 9/4 ch

55.50 ch on line north fence near corner

60.00 set trap 1/4 1/4 cow

74.13 ch from this point the 1/4 cow to NW 1/4 00

N 1/4 55 W. 5.765 ch

79.72 ch the 1/4 cow on north end of

Sec. 19, at a point 1.40 ch

west of random line

N. 14° 5' W

4 114.0

3 5

10.5

7 4.13

5.59

99.72

Set trap 7 ch south 35 ch west.

Book 12

5.765

97.0

403.55

5188.5

55.920.5 ch

1395.100

5.765 71

5.765

115.30

231.60

115.30

1395.100

Set trap 14 ch south 90 ch west.

1 W 21.52 mld cow x 44 m met face.

met.

Set trap 21 ch south 10.5 ch west

set trap 9 x 4 x 15 mld 1/4 cow NW

C.S. on west 4 on top. NW 1/4 from 2.55 ch

west. P.P. 9 ch west to fence at west corner of

empty Rock house with along west side

of corner 4.18 ch to fence corner