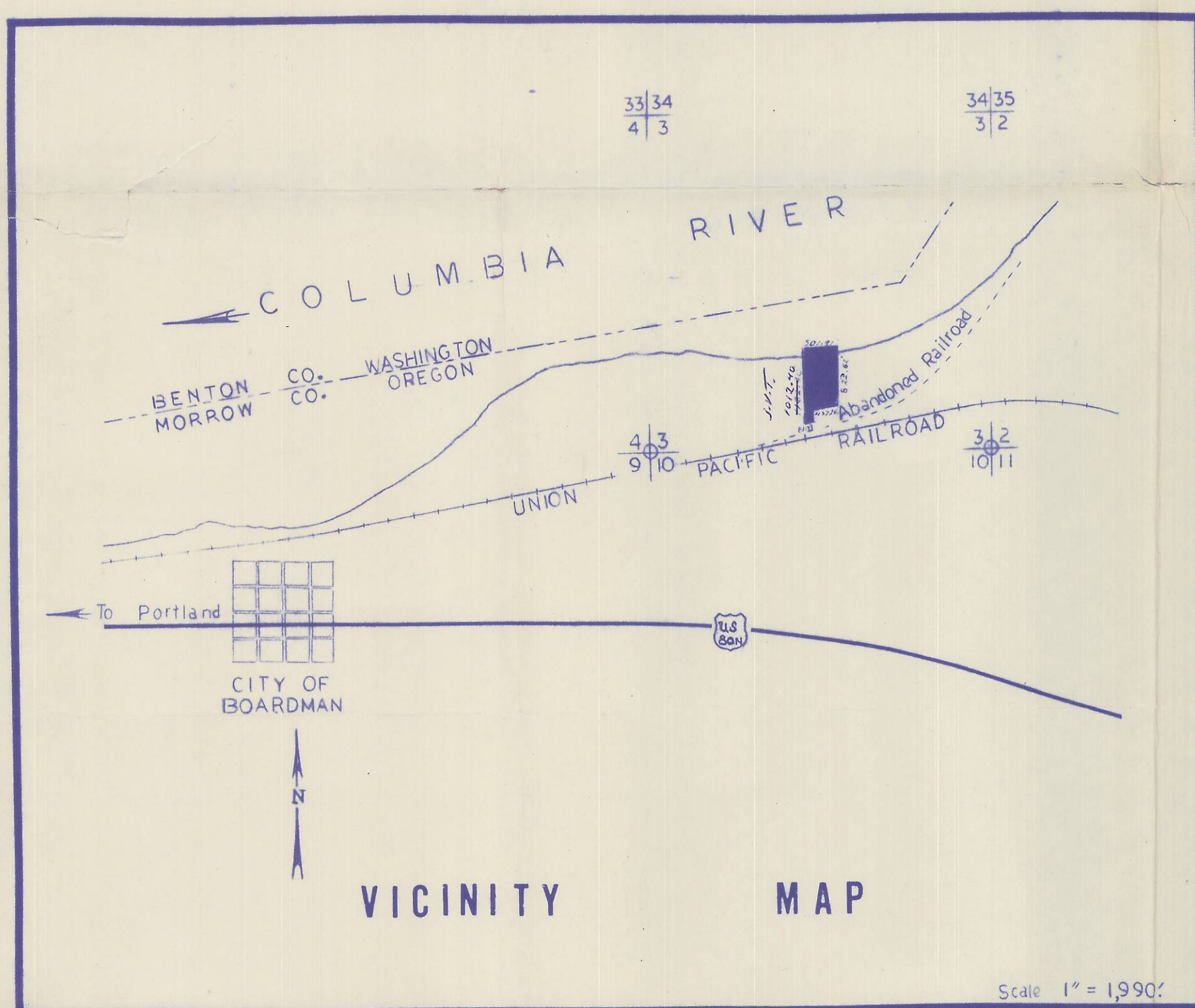
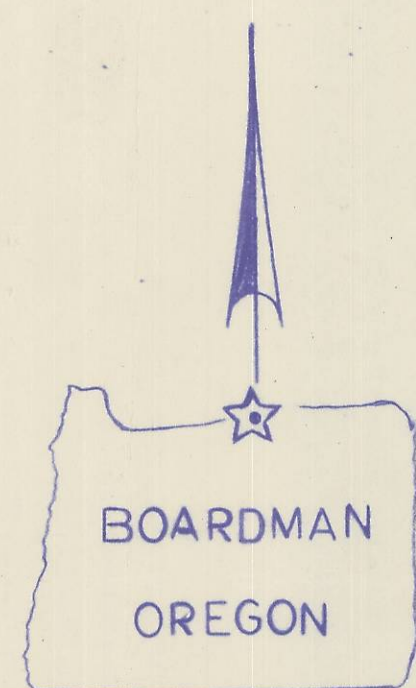


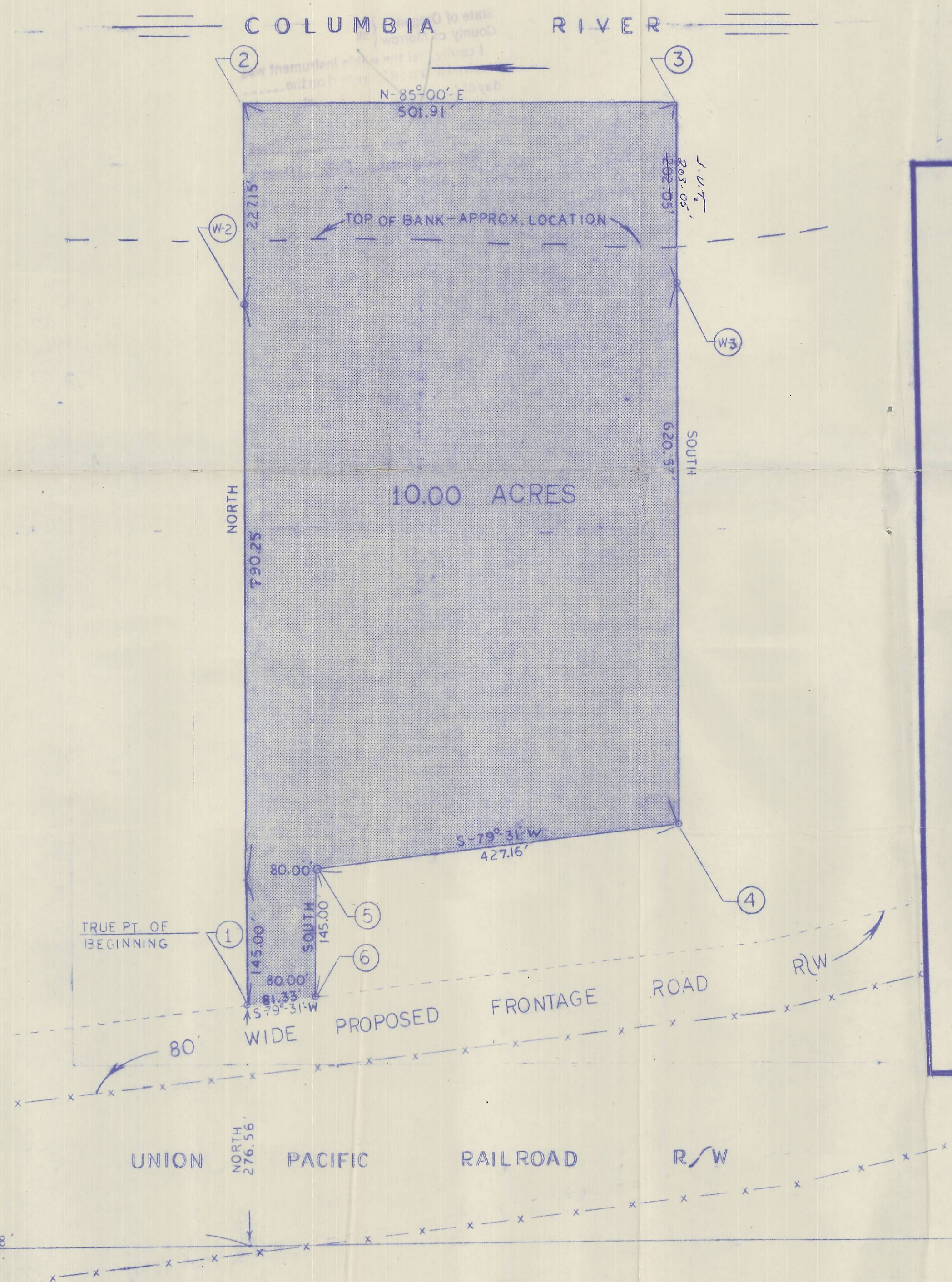
P O R T O F M O R R O W - I N D U S T R I A L P A R K



125601

MORROW STATE
COUNTY OF MORROW

Handwritten notes and signatures in blue ink.



LEGAL LAND SURVEY DESCRIPTION

Commencing at Common Section Corner 3, 4, 9 & 10, Township 4 North, Range 25 East, Willamette Meridian, identified by a 2" diameter brass washer set in concrete in a 2" diameter steel pipe, thence; East 1,982.28 feet along Common Section Line 3 & 10 to Point No. 1, thence; North 276.56 feet to Corner No. 1 and the true point of beginning for this land survey description, thence; North 790.25 feet to a Witness Corner for Corner No. 2, thence; North 227.15 feet to Corner No. 2, said Corner being submerged in the Columbia River at River Bed Elevation 250', thence; N 85° 00' E., 501.91 feet to Corner No. 3, said Corner being submerged in the Columbia River at River Bed Elevation 250', thence; South 208.05 feet to a Witness Corner for Corner No. 3, thence; South 620.57' to Corner No. 4, thence S 79° 31' W., 427.16 feet to Corner No. 5, thence; South 145.00 feet to Corner No. 6, thence; South 79° 31' W., 81.33 feet to Corner No. 1 and the point of beginning for the aforementioned land survey description. The geometry of the above described tract of land is a trapezoid containing 10.00 acres and includes an 80.00 ft. wide by 145' long corridor, and is all situated at Boardman, County of Morrow, State of Oregon.

All Corners and/or Witness Corners identified in the field by 1/2" diameter by 4' long steel rods driven to approximately 4 inches above the ground.



sw/ta
Site Sec 3 TAN R25E

J. VAL TORONTO & ASSOCIATES
CONSULTING ENGINEERS
PLEASANTON, OREGON

PROJECT: PORT OF MORROW - HERMISTON DEV. CORP.
UMATILLA DEV. CORP. - I.M. DOCKIN CORP.
DETAIL DRAWING: 1000 ACRE TRACT
LAND SURVEY
DATE: MAY. 6 1969 SCALE: 1" = 100' SHEET: 1

DELEGATED: N.T. SET STEEL ROD 1/2" DIA. X 4'

Book 2 Page 37
Folder 1211