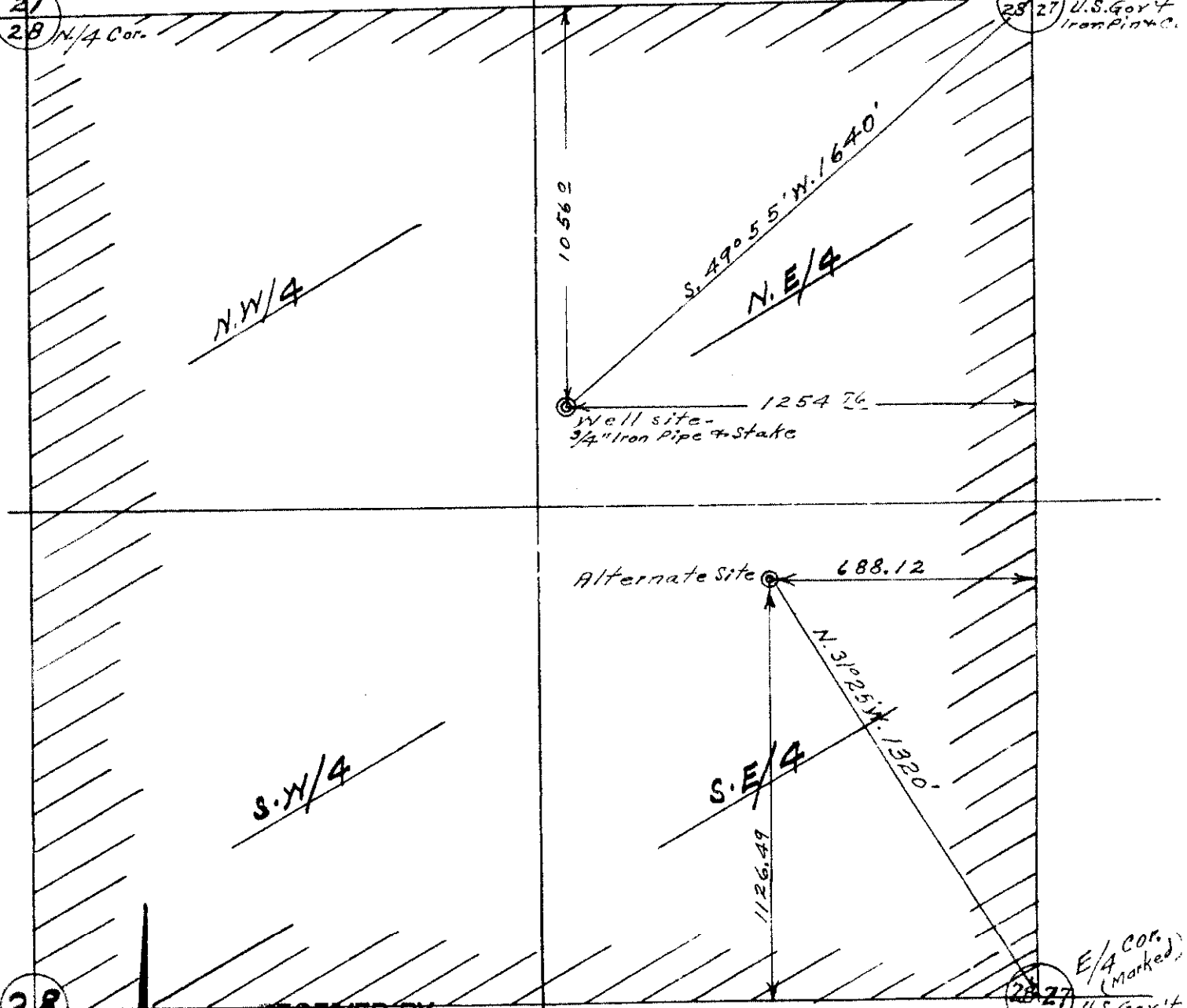


I, W. E. O. Criger of Pendleton, Oregon, do hereby certify that this map was made from notes taken during an actual survey made by me on Oct. 31 - 1954; that the monument shown on this map consisting of a 3/4" iron pipe 3ft long, and the top of which is 6 inches above the ground is

21  
28 N/4 Cor.

21 22  
28 27 U.S. Gov't  
Iron Pipe & C.



28

28 27 E/4 Cor. (Marked)  
U.S. Gov't  
Iron Pipe & C.

**RECEIVED BY**  
Morrow County Surveyor  
Date: 2-7-2013  
Rec'd By: S.K.H.  
No.: 2013-20A  
Folder No.: 1075

Map of N.E./4 of Sec. 28-  
T. 4 N., R. 26 E. W.M.  
Morrow Co., Ore.  
Dept. of Interior No.  
U.S. Bureau of Land Management.  
Oregon State Engineers Office  
File No. \_\_\_\_\_  
Surveyed, staked & plotted - Oct. 31 - 1954  
By - W. E. O. Criger.

