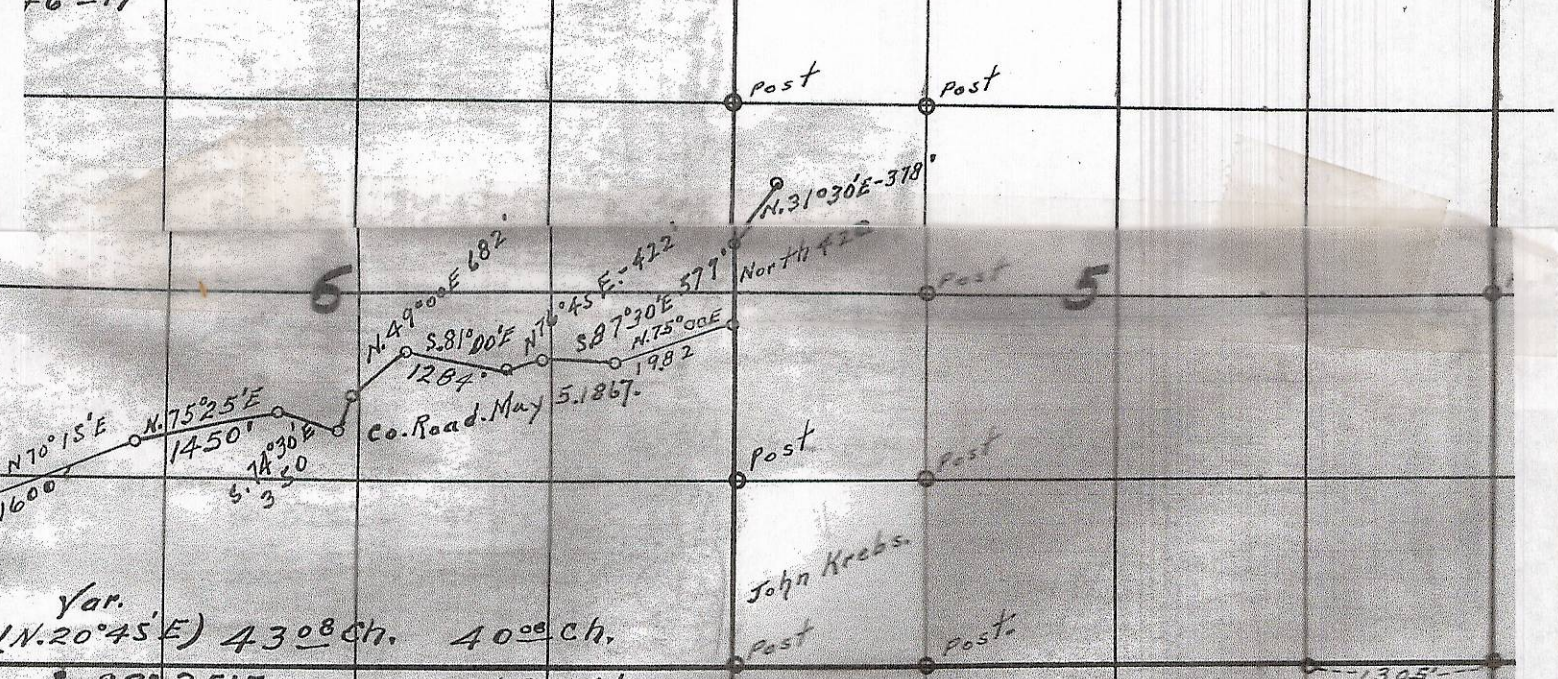


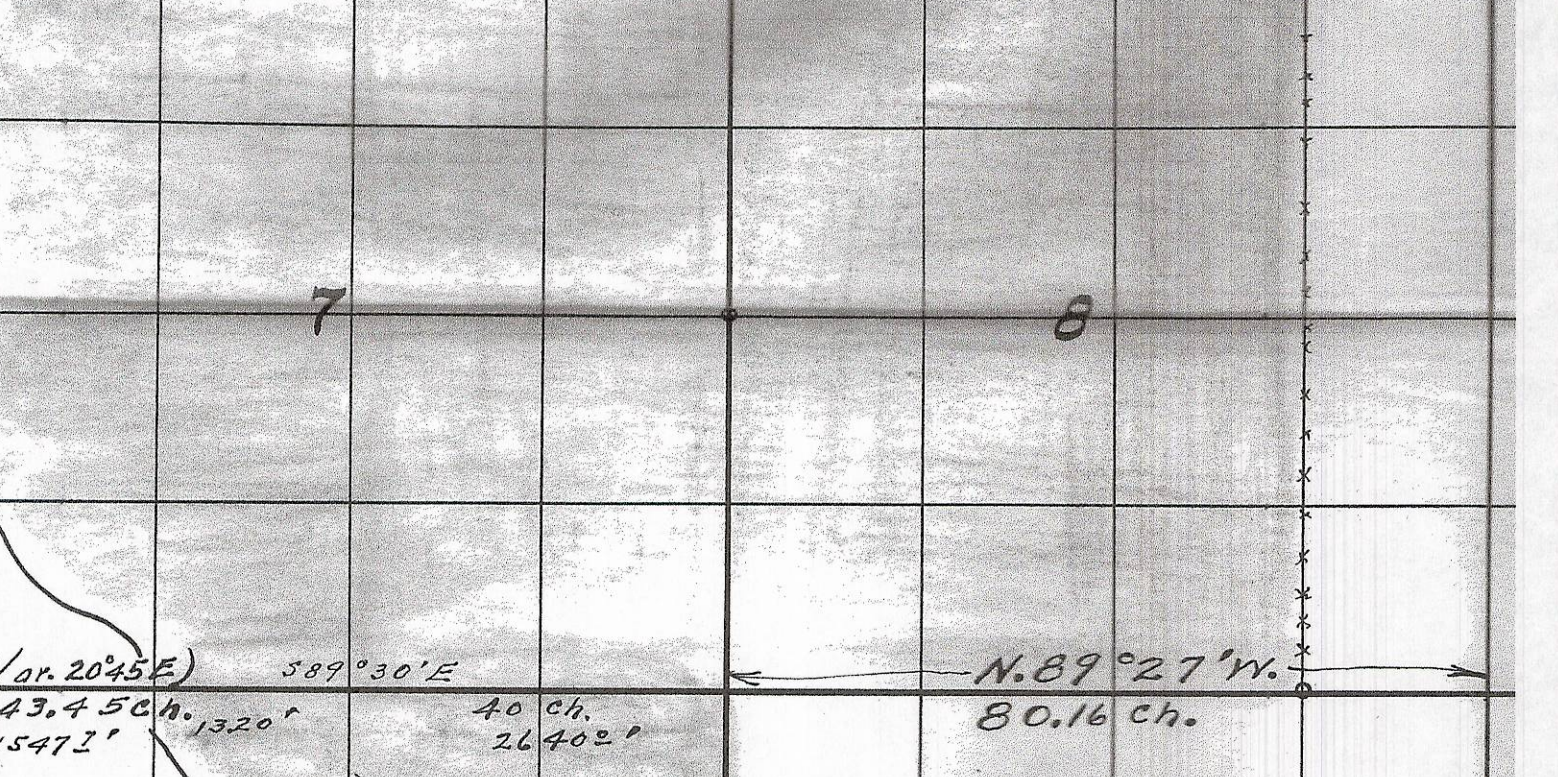
Set Post 9'E. of this Flag 46.46 ch.
 Post set. Move 9'E. 40.00 ch.
 S. 89. 30'E



17.28 ch Var. 21° ← 40 ch. T2N. R23E.W.M. Var. 20°15'
 1518 FT S. 89°41'W. T. 1 N., R 23 E. W. M. S 89°41'W - 40 ch.
 46 IA 83.0 ch. 40. ch.



Var. (N. 20°45'E) 4308 ch. 4000 ch.
 S. 89°25'E. 2640 Ft.



RECEIVED BY
 Morrow County Surveyor
 Date: 2-7-2013
 Rec'd By: S.K.H.
 No.: 2013-19B
 Folder No.: 1074

Map showing
 Lands surveyed in
 sections - 30 and 31 Twp. 2N., R. 23 E. W. M.
 and
 sections 5, 6, 7, 8, and 18, Twp. 1N., R. 23 E. W. M.
 Morrow County, Oregon.
 Surveyed, staked, and platted, Dec. 1953
 By W.E.O. Criger — Scale: 4 inches = 1 mile