

STRANIX AND OFNER
ENGINEERS
PENDLETON, OREGON

PHONE 492

April 25, 1949

County Engineer
Morrow County
Heppner, Oregon

Dear Sir:

The following is an abstract of the notes of a survey made for
Eatie P. Rand of Irrigon, Oregon.

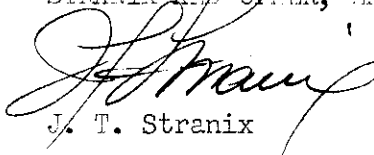
In S. 21, T. 5 N., R27 E., W.M.

Located the NE corner of section 21, a concrete monument. From
said NE corner ran west 1318.9 ft. and found a concrete mon-
ument marking the east 1 / 16 corner between sections 16 and 21.
From said 1 / 16 corner measured south 1326.3 ft. and found a
concrete monument marking the N.E. 1 / 16 corner of section 21.

Occupying said N.E. 1 / 16 corner and orienting N. 0°-22' E.
on the line to the east 1 / 16 corner between sections 16 and
21, turned to a bearing of N. 89°- 33' W. and ran 668.8 ft. to
the center of the county road; thence along the center of the **
county road 327.0 ft.; thence East 30 ft. to the easterly R/W
line of the road and the S.W. corner of the tract being sur-
veyed; thence East 288.5 ft.; thence N. 0°- 23' W. 138.0 ft.;
thence S. 80°-37' W. 290.9 ft. to the easterly R/W line of the
county road ; thence S. 80°- 37' W. 30.44 ft. to the center of
the county road; thence S. 0°- 22' W. along the center of the
county road 85.62 ft. to the point 30.0 ft. west of the S.W.
corner of the property.

All corners of the property were marked by 5/8 X 5/8 X 2 1/2" iron
rods set in concrete.

Very truly yours,
STRANIX AND OFNER, ENGINEERS

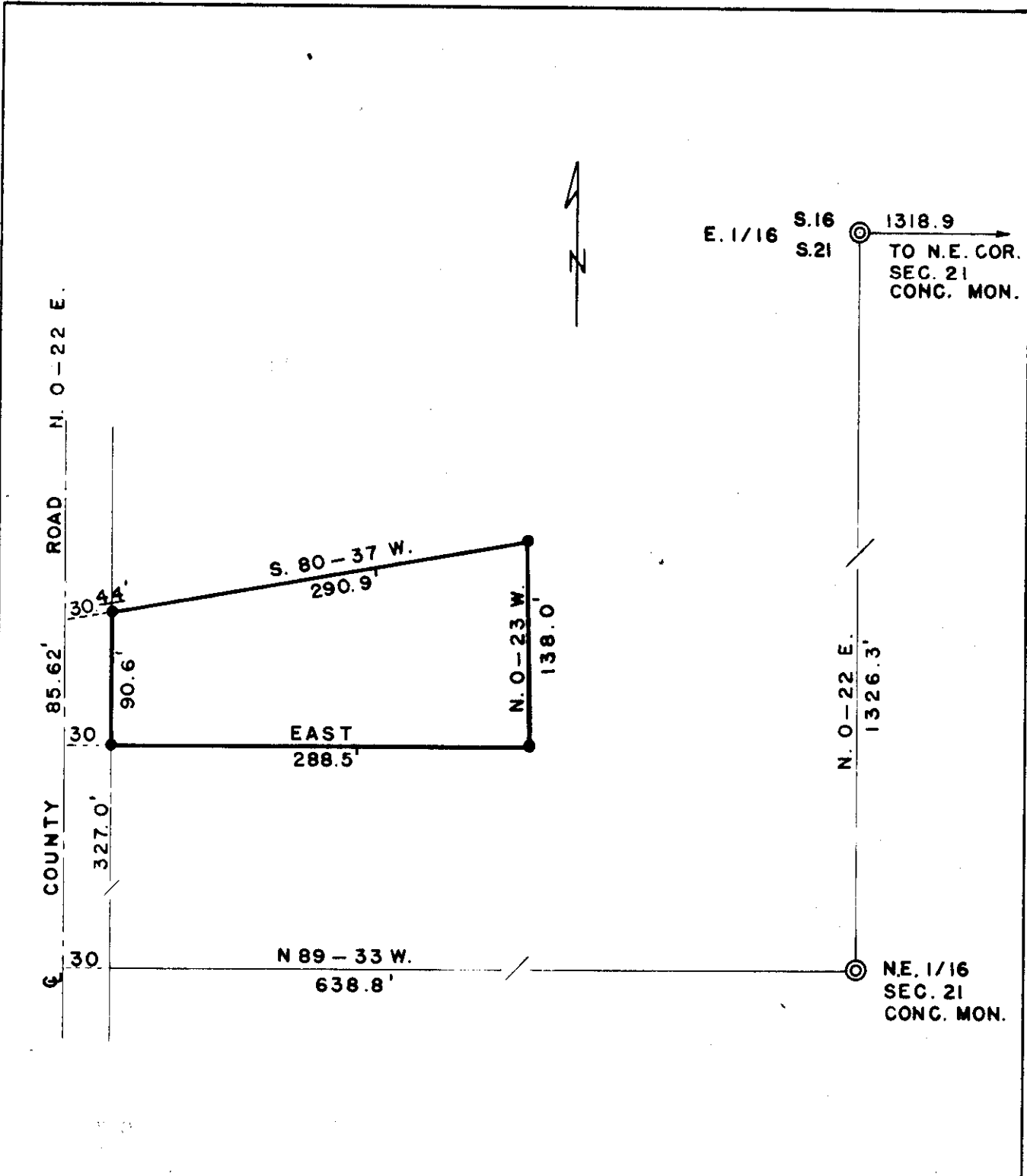

J. T. Stranix

RECEIVED BY
Morrow County Surveyor

Date: 1-25-2013
Received By: SKH
No.: 2013-15A
Folder No.: 1071

cc J. R. Raley
encl: Map of tract

** On a bearing of N.0°- 22'E.



● --- 5/8" X 5/8" X 24"
 IRON ROD SET
 IN CONCRETE

RECEIVED BY
 Morrow County Surveyor

Date: 1-25-2013
 Rec'd By: SKH
 No.: 2013-15A
 Folder No.: 1071



STRANIX & OFNER	
ENGINEERS	
PENDLETON	OREGON
SURVEY FOR B.P. RAND <i>NE 1/4</i> IN SEC. 21, T5N, R.27E.	
DRAWN BY: JTS 4-22-49	