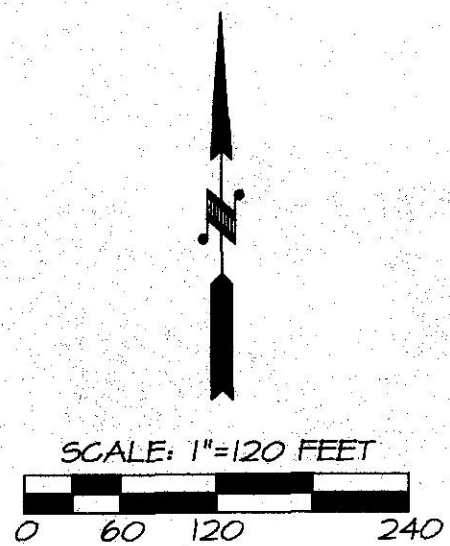


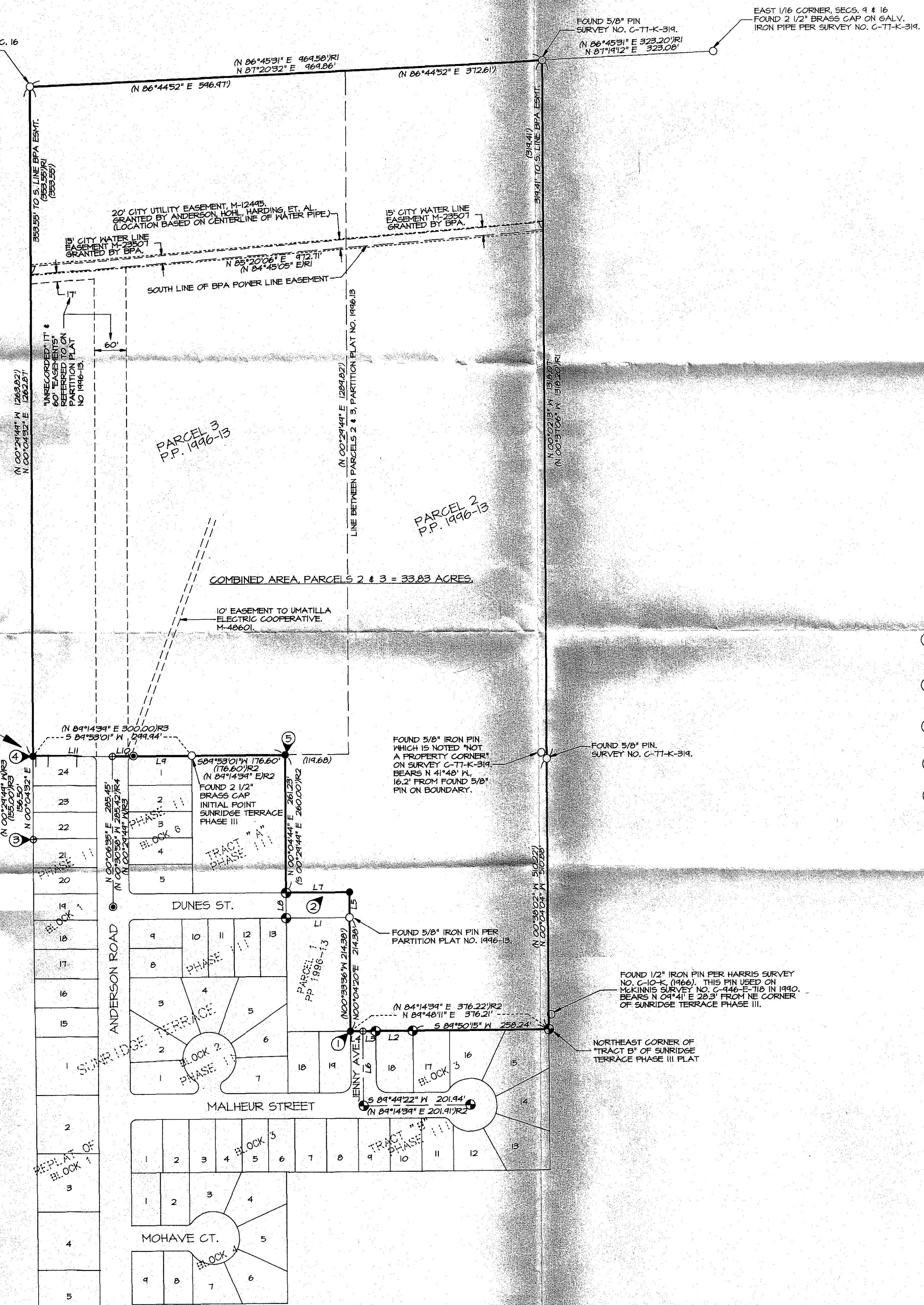
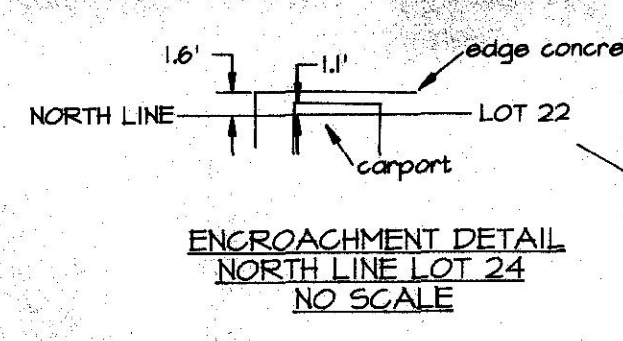
RECORD OF SURVEY

APRIL, 1999



BEARINGS ARE BASED ON GPS GEODETIC OBSERVATION TAKEN 45 FEET WEST OF THE EAST 1/16TH CORNER COMMON TO SECTIONS 9 & 16.

LINE NO.	BEARING	DISTANCE	RECORD DIMENSION
L1	N 89°52'35" E	119.68'	(N 89°14'39" E 119.68')
L2	S 89°46'45" W	70.06'	(N 89°14'39" E 70.00') R2
L3	S 89°39'06" W	23.91'	(N 89°14'39" E 24.00') R2
L4	S 89°39'06" W	24.00'	(N 89°14'39" E 24.00') R2
L5	N 00°04'20" E	48.00'	(48.00')
L6	N 00°08'36" W	140.77'	(N 00°45'21" W 140.90') R2
L7	S 89°52'45" W	119.88'	(119.68')
L8	N 00°09'49" W	48.01'	(S 00°29'49" E 48.00') R2
L9	S 89°53'01" W	109.90'	(N 89°14'39" E 110.05') R3
L10	S 89°53'01" W	39.95'	(N 89°14'39" E 39.95') R3
L11	S 89°53'01" W	150.10'	(N 89°14'39" E 150.00') R3



LEGEND

- - SET 5/8" BY 30" IRON PIN WITH 1/2" YELLOW PLASTIC CAP MARKED "OR PLS 106, WA PLS 17372".
- - FOUND MONUMENT AS NOTED.
- ⊙ - FOUND 5/8" PIN WITH 1/2" ALUMINUM CAP STAMPED "PLS 433", PER SUNRIDGE TERRACE PHASE II PLAT.
- ⊙ - FOUND 5/8" PIN WITH 1/2" ALUMINUM CAP STAMPED "PLS 433", FROM SUNRIDGE TERRACE PHASE III PLAT.
- ⊕ - CALCULATED POINT ONLY, NOT SET OR FOUND.
- (XOX) - RECORD DIMENSION FROM MORROW COUNTY PARTITION PLAT NO. 1996-13. NOTE: DIMENSIONS FOR PARCELS 2 AND 3 ON THIS PARTITION PLAT ARE BASED ON RECORD OR CALCULATION AND WERE NOT MEASURED ON PARTITION PLAT NO. 1996-13.
- (XOX)R1 - RECORD DIMENSION FROM MORROW COUNTY SURVEY NO. C-77-K-319.
- (XOX)R2 - RECORD DIMENSION FROM SUNRIDGE TERRACE PHASE III PLAT.
- (XOX)R3 - RECORD DIMENSION FROM SUNRIDGE TERRACE PHASE II PLAT.
- (XOX)R4 - RECORD DIMENSION FROM SURVEY NO. B-1114-E 887.
- ⊙ - SPECIAL NOTE, SEE NOTE TABLE.

NOTE TABLE:

- ① MONUMENT FOUND BY EDWARDS IN PARTITION PLAT NO. 1996-13 IS MISSING AND ITS POSITION IS OCCUPIED BY A RAILROAD TIE. REESTABLISHED POSITION OF MONUMENT AT POSITION REPORTED BY EDWARDS AND SET NEW WITNESS CORNER MONUMENT S 89°48'11" W, 100' FROM CORNER POINT.
- ② THIS PORTION OF DUNES STREET WAS DEDICATED TO THE PUBLIC ON PARTITION PLAT NO. 1996-13.
- ③ CALCULATED POSITION OF SW CORNER LOT 22 PER TIES MADE ON EDWARDS SURVEY NO. B-1114-E 887 (MONUMENT NOT FOUND). THIS POSITION WAS HELD AS A POINT ON THE WEST LINE SUNRIDGE TERRACE PHASE II.
- ④ REESTABLISHED CORNER POSITION BY EXTENDING LINE WESTERLY THROUGH MONUMENTS FOUND ON THE NORTH LINE OF SUNRIDGE TERRACE PHASE II.
- ⑤ REESTABLISHED CORNER POSITION BY EXTENDING LINE EASTERLY THROUGH MONUMENTS FOUND ON THE NORTH LINE OF SUNRIDGE TERRACE PHASE II. HELD RECORD DISTANCE OF 176.60 FEET FROM INITIAL POINT OF SUNRIDGE PHASE III.

NARRATIVE OF SURVEY

THIS SURVEY WAS MADE AT THE REQUEST OF AARON HOEFT TO SURVEY THE OVERALL EXTERIOR BOUNDARY OF PARCELS 2 AND THREE OF MORROW COUNTY PARTITION PLAT NO. 1996-13. THE DESCRIPTION CONTROLLING THE EXTERIOR BOUNDARY OF PARTITION PLAT IS RECORDED IN MEMORANDUM OF CONTRACT RECORDED AT M-40514, MORROW COUNTY DEED RECORDS.

CONTROLLING MONUMENTS FOUND AND THOSE ESTABLISHED ARE SHOWN. I NOTE A DISCREPANCY OF 1 TO 1 1/2 FEET IN THE LOCATION OF THE NORTH LINE OF SUNRIDGE TERRACE PHASE II AND III. THIS DISCREPANCY WAS ALSO DOCUMENTED BY DENNY EDWARDS IN MORROW COUNTY SURVEY NO. B-1114-E 887.

THIS SURVEY WAS MADE WITH LEICA 394 GEODETIC GPS RECEIVERS USING STATIC AND REAL TIME KINEMATIC METHODS. A SOKKIA SET 48 FIVE SECOND TOTAL STATION WAS USED IN AREAS WHERE VEGETATION OBSCURED GPS SIGNAL RECEPTION.

RECEIVED BY
Morrow County Surveyor
Date 5/99
Made By DR
No. D-1211-E (99)

REGISTERED PROFESSIONAL LAND SURVEYOR <i>William R. Wells</i> DREGON JULY 22, 1977 WILLIAM R. WELLS 1106 RENEWS 6/30/00	WILLIAM R. WELLS, PLS 357 N.E. HWY. 11 P.O. BOX 1696 PENDLETON, OR 97801 PHONE: (541) 276-6362	PROJECT: BOUNDARY SURVEY FOR: AARON HOEFT FOR BOB WEBSTER PROJECT PARCELS 2 AND 3 OF MORROW COUNTY PARTITION PLAT NO. 1996-13, LOCATED IN THE NORTHEAST QUARTER OF SECTION 16, TOWNSHIP 4 NORTH, RANGE 25 EAST, MORROW COUNTY, OREGON.
CK. BY: <u>WRW</u> NO: <u>99-608</u>	DATE: <u>4/7/99</u> DR. BY: <u>DMT</u>	