

FALER ROAD BOUNDARY TREATY FISHING ACCESS SITE

SITUATED IN THE SOUTH 1/2 OF SECTION 8, T. 4 N., R. 25 E., W. M.
MORROW COUNTY, OREGON

SURVEYED: 8-13-97
SCALE: 1" = 100'
JOB NO. 9677

BY: CHASE, JONES & ASSOCIATES, INC.
1500 S.W. 12TH AVE
PORTLAND, OREGON 97201
PHONE: (503) 228-9844

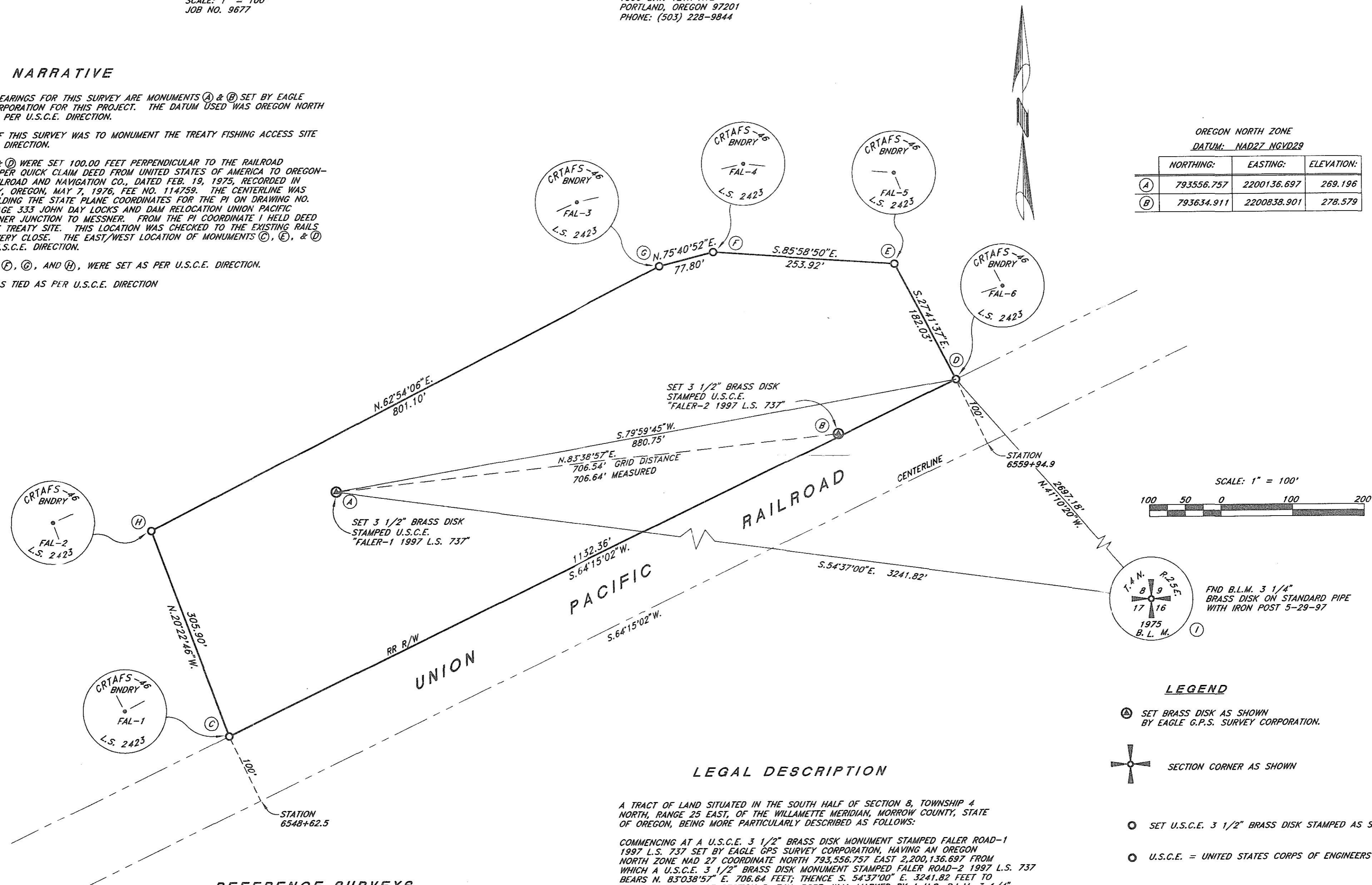
RECEIVED BY
Morrow County Surveyor
Date 11/3/97
Rec'd By SKB
No. C-1149-E 923

NARRATIVE

- (1) THE BASIS OF BEARINGS FOR THIS SURVEY ARE MONUMENTS (A) & (B) SET BY EAGLE GPS SURVEY CORPORATION FOR THIS PROJECT. THE DATUM USED WAS OREGON NORTH ZONE NAD27 AS PER U.S.C.E. DIRECTION.
- (2) THE PURPOSE OF THIS SURVEY WAS TO MONUMENT THE TREATY FISHING ACCESS SITE AS PER U.S.C.E. DIRECTION.
- (3) MONUMENTS (C) & (D) WERE SET 100.00 FEET PERPENDICULAR TO THE RAILROAD CENTERLINE AS PER QUICK CLAIM DEED FROM UNITED STATES OF AMERICA TO OREGON-WASHINGTON RAILROAD AND NAVIGATION CO., DATED FEB. 19, 1975, RECORDED IN MORROW COUNTY, OREGON, MAY 7, 1976, FEE NO. 114759. THE CENTERLINE WAS LOCATED BY HOLDING THE STATE PLANE COORDINATES FOR THE PI ON DRAWING NO. JDR-1-0-16 PAGE 333 JOHN DAY LOCKS AND DAM RELOCATION UNION PACIFIC RAILROAD, HEPPNER JUNCTION TO MESSNER. FROM THE PI COORDINATE I HELD DEED BEARING TO THE TREATY SITE. THIS LOCATION WAS CHECKED TO THE EXISTING RAILS AND CHECKED VERY CLOSE. THE EAST/WEST LOCATION OF MONUMENTS (C), (E), & (H) WERE AS PER U.S.C.E. DIRECTION.
- (4) MONUMENTS (E), (F), (G), AND (H), WERE SET AS PER U.S.C.E. DIRECTION.
- (5) MONUMENT (I) WAS TIED AS PER U.S.C.E. DIRECTION

OREGON NORTH ZONE
DATUM: NAD27 NGVD29

	NORTHING:	EASTING:	ELEVATION:
(A)	793556.757	2200136.697	269.196
(B)	793634.911	2200838.901	278.579



REFERENCE SURVEYS

1. SUPPLEMENT PLAT OF SECTION 8, T. 4 N., R. 25 E., W.M. U.S. DEPARTMENT OF THE INTERIOR BUREAU OF LAND MANAGEMENT, DATED APRIL 27, 1948.
2. JOHN DAY LOCK & DAM U.S. ARMY ENGINEERS RELOCATION UNION PACIFIC RAILROAD, HEPPNER JUNCTION TO MESSNER PLAIN & PROFILE MAP NO. JDR-1-0-16 PAGES 332 THRU 334.

Randy W. Engelgau

Exp. 12-31-97

LEGAL DESCRIPTION

A TRACT OF LAND SITUATED IN THE SOUTH HALF OF SECTION 8, TOWNSHIP 4 NORTH, RANGE 25 EAST, OF THE WILLAMETTE MERIDIAN, MORROW COUNTY, STATE OF OREGON, BEING MORE PARTICULARLY DESCRIBED AS FOLLOWS:
COMMENCING AT A U.S.C.E. 3 1/2" BRASS DISK MONUMENT STAMPED FALER ROAD-1 1997 L.S. 737 SET BY EAGLE GPS SURVEY CORPORATION, HAVING AN OREGON NORTH ZONE NAD 27 COORDINATE NORTH 793,556.757 EAST 2,200,136.697 FROM WHICH A U.S.C.E. 3 1/2" BRASS DISK MONUMENT STAMPED FALER ROAD-2 1997 L.S. 737 BEARS N. 83°03'57" E. 706.64 FEET; THENCE S. 54°37'00" E. 3241.82 FEET TO THE S.E. CORNER OF SECTION 8, T4N, R25E, W.M. MARKED BY A U.S. B.L.M. 3 1/4" BRASS DISK MONUMENT; THENCE N. 41°10'20" W. 2697.18 FEET TO THE NORTHERLY RIGHT-OF-WAY LINE OF UNION PACIFIC RAILROAD, MARKED BY A U.S.C.E. 3 1/2" BRASS DISK MONUMENT AND THE POINT OF BEGINNING FOR THE TRACT OF LAND HEREIN TO BE DESCRIBED, FROM WHICH THE GPS FALER ROAD-1 BEARS S. 79°59'45" W. 880.75 FEET; THENCE S. 64°15'02" W. ALONG THE SAID NORTHERLY RIGHT-OF-WAY LINE 1132.36 FEET TO A U.S.C.E. 3 1/2" BRASS DISK MONUMENT; THENCE NORTH 20°22'46" W. 305.90 FEET TO A U.S.C.E. 3 1/2" BRASS DISK MONUMENT; THENCE N. 62°54'06" E. 801.10 FEET TO A U.S.C.E. 3 1/2" BRASS DISK MONUMENT; THENCE N. 75°40'52" E. 77.80 FEET TO A U.S.C.E. 3 1/2" BRASS DISK MONUMENT; THENCE S. 85°58'50" E. 253.92 FEET TO A U.S.C.E. 3 1/2" BRASS DISK MONUMENT; THENCE S. 27°41'37" E. 182.03 FEET TO THE POINT OF BEGINNING.
THE ABOVE TRACT OF LAND CONTAINS 334,455 SQUARE FEET OR 7.678 ACRES MORE OR LESS.

LEGEND

- (A) SET BRASS DISK AS SHOWN BY EAGLE G.P.S. SURVEY CORPORATION.
- (I) SECTION CORNER AS SHOWN
- (O) SET U.S.C.E. 3 1/2" BRASS DISK STAMPED AS SHOWN.
- (O) U.S.C.E. = UNITED STATES CORPS OF ENGINEERS

NOTES

- (1) ALL BOUNDARY DISTANCES ARE GROUND DISTANCES
- (2) NO TITLE REPORT WAS FURNISHED BY U.S.C.E.
- (3) FIELD MEASUREMENTS MADE WITH A WILD T-2000 WITH EDM USING FIELD TRAVERSE AND RADIAL SURVEY METHODS