

DEED DESCRIPTION PLAT

IN S. 10, T. 3 S., R. 26 E., W. M.

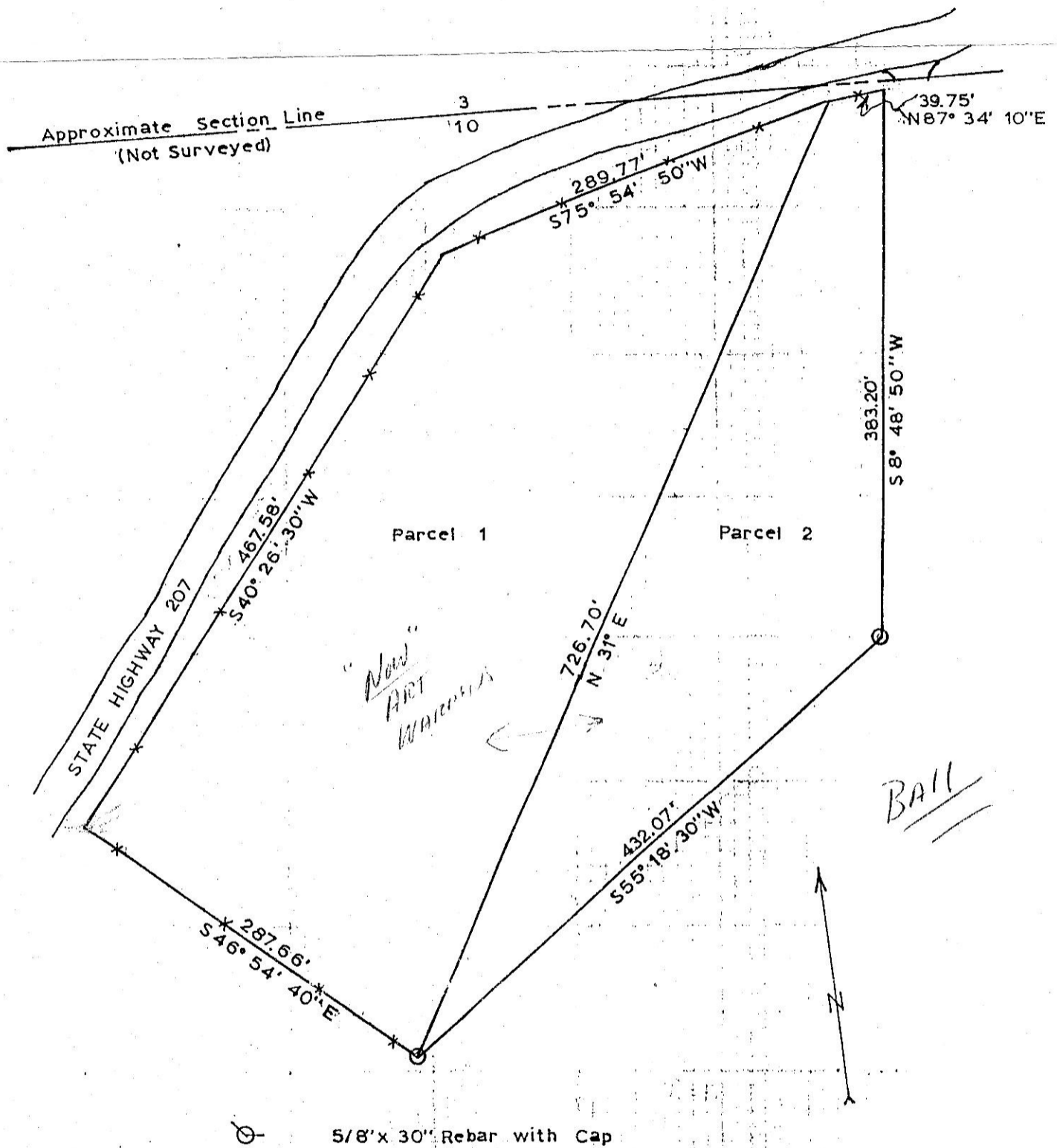
For Royce Fullerton

Surveyed & Platted by L. Myers

October 15, 1970

Scale

1" = 100'



I hereby certify that the measurements and information on this plat and in the accompanying deed description as being correct and true and free of any encroachments to the best of my knowledge.

RECEIVED BY

Morrow County Surveyor

Date 7/11/97

Rec'd By SKB

No. A-1135-E (909)

REGISTERED
OREGON
LAND SURVEYOR

Leland Lee Myers

JULY 9, 1965
LELAND LEE MYERS
699