

THE FINAL PLAT OF
Moore Ranch Estates
 W. 1/2, S.E. 1/4, SEC. 17, T.4 N., R.25 E., W.M.
 MORROW COUNTY, OREGON

RECEIVED BY
 Morrow County Surveyor
 Date 1-7-97
 Rec'd By SKB
 No. C-1116-E (889)

I HEREBY CERTIFY THAT THIS IS AN EXACT COPY OF THE TOWN PLAT THAT WAS ORIGINALLY FILED IN UMATILLA COUNTY.

Robert H. Stratton New 22 1996
 ROBERT H. STRATTON PLS. 1111

REGISTERED
 PROFESSIONAL
 LAND SURVEYOR
 OREGON
 JULY 22, 1977
 ROBERT H. STRATTON
 PLS. 1111

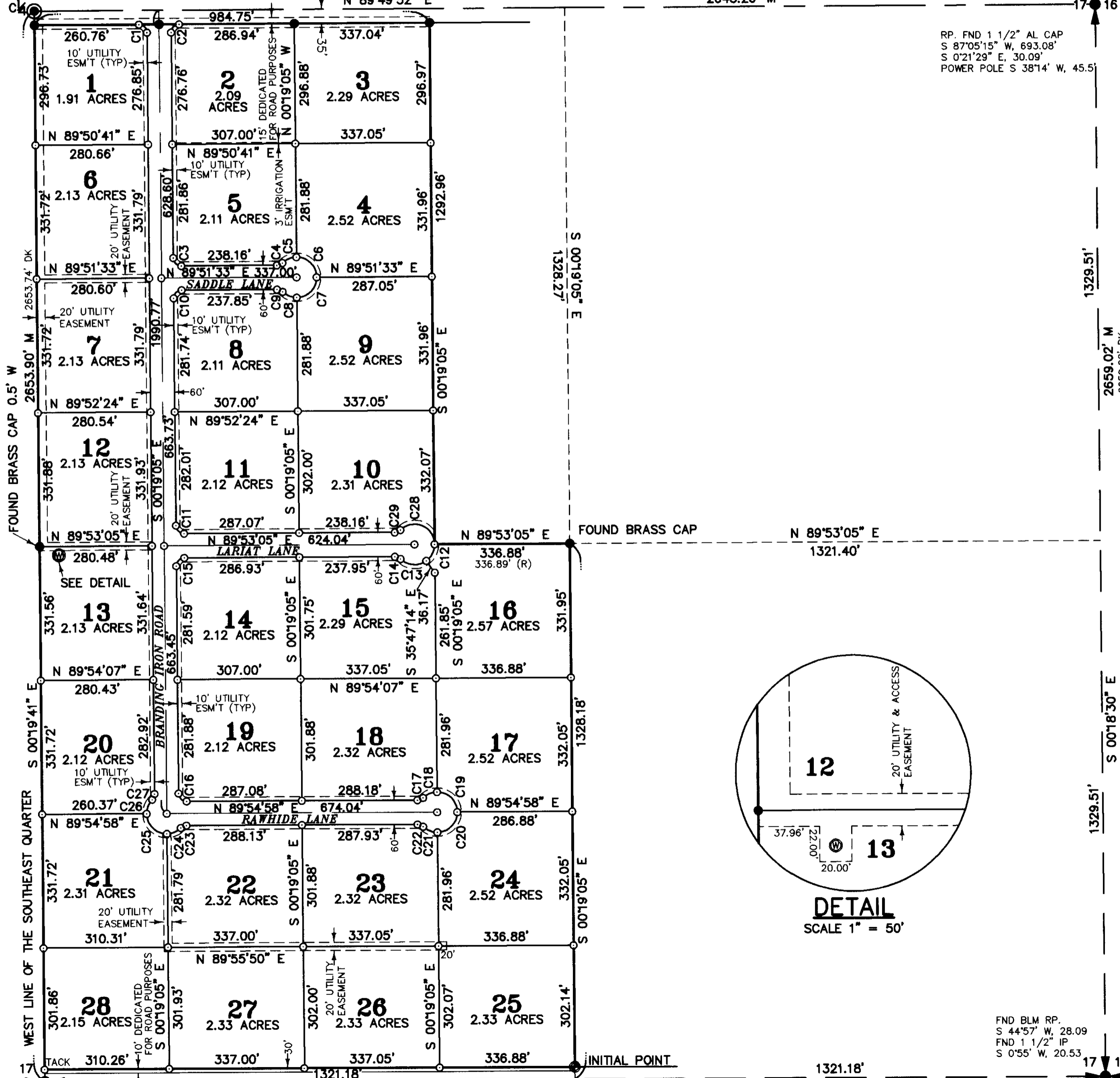
SET RP'S 5/8" REBAR W/RED
 CAP "STRATTON CONTROL"
 S 26°09' W, 32.58'
 S 36°19' E, 28.05'

FOUND 2" IRON PIPE
 WITH NAIL

WILSON ROAD

2643.24' DK
 2643.26' M

FOUND RR SPIKE



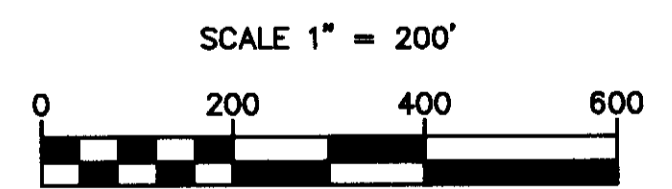
RP. FND 1 1/2" AL CAP
 S 87°05'15" W, 693.08'
 S 0°21'29" E, 30.09'
 POWER POLE S 38°14' W, 45.5'

CURVE TABLE

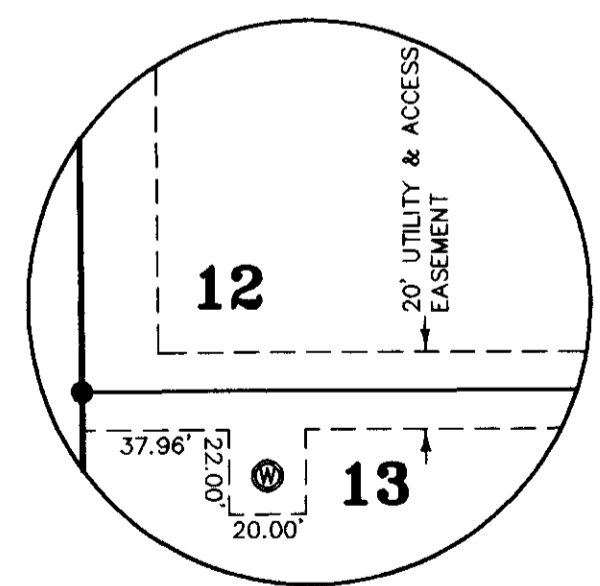
CURVE	LOT	RADIUS	LENGTH	TANGENT	CHORD	BEARING	DELTA
C1	1	20.00'	31.36'	19.95'	28.25'	N 45°14'37" W	89°51'03"
C2	2	20.00'	31.47'	20.05'	28.32'	N 44°45'23" E	90°08'57"
C3	5	20.00'	31.35'	19.94'	28.24'	S 45°13'46" E	89°49'22"
C4	5	20.00'	15.50'	8.16'	15.12'	N 67°39'05" E	44°24'55"
C5	5	50.00'	38.60'	20.32'	37.65'	S 67°33'46" W	44°14'17"
C6	4	50.00'	78.69'	50.15'	70.82'	S 45°13'46" E	90°10'38"
C7	9	50.00'	78.39'	49.85'	70.60'	S 44°46'14" W	89°49'22"
C8	8	50.00'	38.91'	20.50'	37.94'	N 68°01'19" W	44°35'33"
C9	8	20.00'	15.50'	8.16'	15.12'	S 67°56'00" E	44°24'55"
C10	8	20.00'	31.48'	20.06'	28.33'	N 44°46'14" E	90°10'38"
C11	11	20.00'	31.35'	19.93'	28.23'	N 45°13'00" W	89°47'50"
C12	16	50.00'	47.41'	25.66'	45.65'	N 27°02'55" E	54°19'41"
C13	15	50.00'	69.89'	42.02'	64.34'	N 85°44'37" W	80°05'14"
C14	15	20.00'	15.50'	8.16'	15.12'	S 67°54'27" E	44°24'55"
C15	14	20.00'	31.49'	20.07'	28.33'	N 44°47'00" E	90°12'10"
C16	19	20.00'	31.33'	19.92'	28.23'	N 45°12'04" W	89°45'56"
C17	18	20.00'	15.50'	8.16'	15.12'	N 67°42'31" E	44°24'55"
C18	18	50.00'	38.56'	20.29'	37.61'	S 67°35'29" W	44°10'51"
C19	17	50.00'	78.74'	50.20'	70.86'	S 45°12'04" E	90°14'04"
C20	24	50.00'	78.34'	49.80'	70.57'	N 44°47'56" E	89°45'56"
C21	23	50.00'	38.96'	20.53'	37.99'	S 67°59'36" E	44°38'59"
C22	23	20.00'	15.50'	8.16'	15.12'	S 67°52'34" E	44°24'55"
C23	22	20.00'	15.50'	8.16'	15.12'	S 67°42'31" W	44°24'55"
C24	22	50.00'	38.56'	20.29'	37.61'	N 67°35'29" E	44°10'51"
C25	21	50.00'	78.74'	50.20'	70.86'	N 45°12'04" W	90°14'04"
C26	20	50.00'	38.56'	20.29'	37.61'	N 22°00'24" E	44°10'51"
C27	20	20.00'	15.50'	8.16'	15.12'	N 21°53'22" E	44°24'55"
C28	20	50.00'	117.30'	118.99'	92.19'	N 67°19'23" W	134°24'55"
C29	20	20.00'	15.50'	8.16'	15.12'	N 67°40'37" E	44°24'55"

LEGEND

- = SET 5/8" x 30" REBAR WITH PLASTIC CAP STAMPED LS 1111
- = 5/8" REBAR OR AS INDICATED
- B.O.B. = BASIS OF BEARING
- ⊙ = SET 2" x 36" GALVANIZED PIPE 6" BELOW SURFACE
- ⊕ = IRRIGATION WELL
- ⊗ = SET TACK W/BRASS WASHER STAMPED LS 1111
- M = MEASURED DISTANCE
- DK = RECORD DISTANCE BY DAVE KRUMBEIN PLS



BASIS OF BEARING
 SURVEY FOR GLEN MOORE DATED 2/26/80
 BY KRUMBEIN ENGINEERING CO.
 EQUIPMENT USED
 A FIVE-SECOND TOTAL STATION



DETAIL
 SCALE 1" = 50'

FND BLM RP.
 S 44°57' W, 28.09'
 FND 1 1/2" IP
 S 0°55' W, 20.53'

FOUND 5/8" REBAR
 AND OLD BRASS CAP (BENT)

INDEX

17	4	N	25E
----	---	---	-----

FINAL PLAT FOR
GLEN & MARGARET MOORE

STRATTON SURVEYING & MAPPING
 1350 GRANDRIDGE BLVD SUITE 200
 KENNEWICK, WASHINGTON 99336
 (509) 735-7364

2269PL-2.DWG	DATE: 11/20/96	SHT. 1 OF 2
	DRAWN BY: A.M.	JOB # 2269