

THE FINAL PLAT OF Moore Ranch Estates

W. 1/2, S.E. 1/4, SEC. 17, T.4 N., R.25 E., W.M.
MORROW COUNTY, OREGON

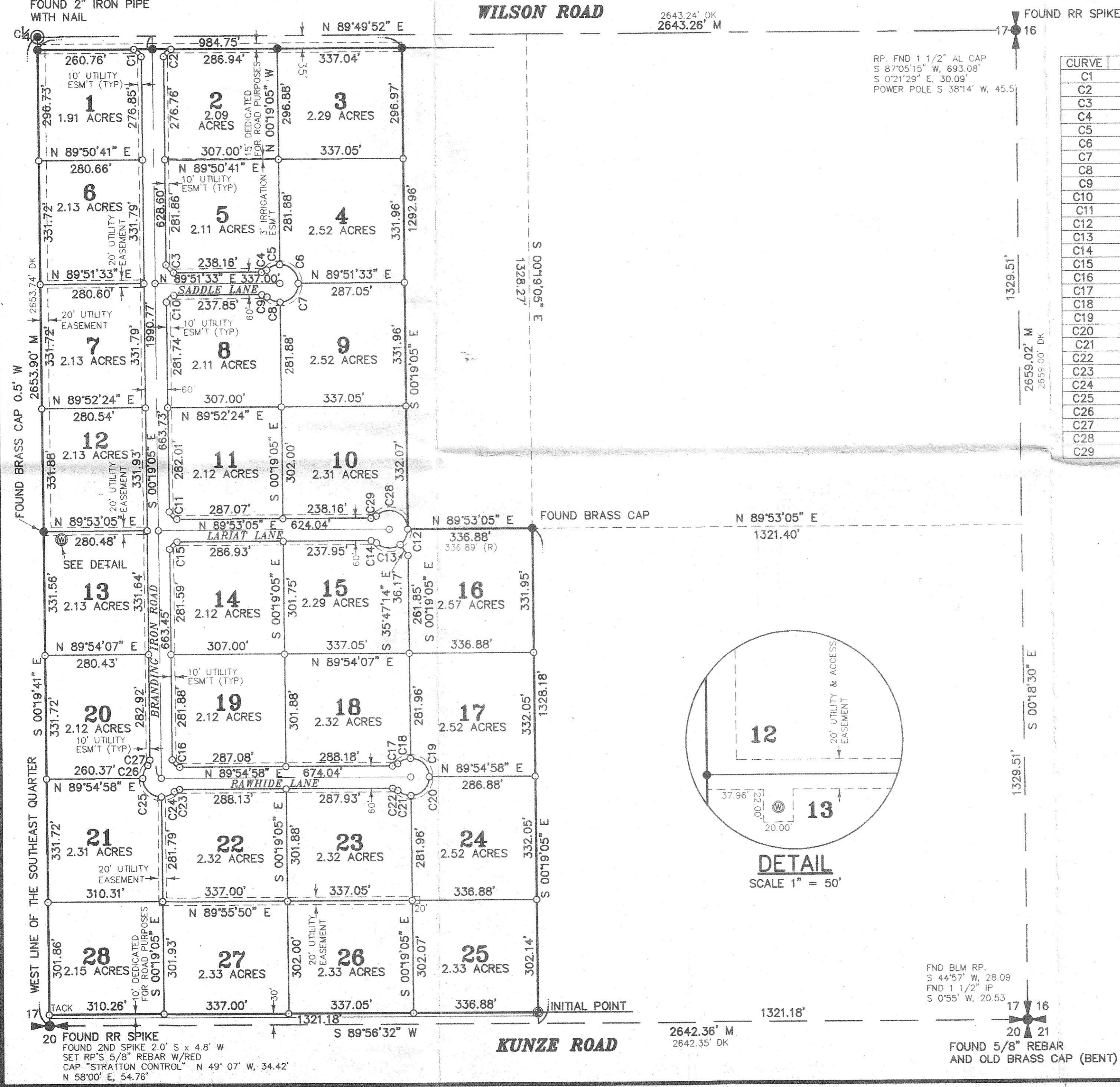
RECEIVED BY
Morrow County Surveyor
Date 1-7-97
Rec'd By SKB
No. C-1116-E (889)

I HEREBY CERTIFY THAT THIS IS AN EXACT COPY OF THE TOWN PLAT THAT WAS ORIGINALLY FILED IN UMATILLA COUNTY.

REGISTERED
PROFESSIONAL
LAND SURVEYOR
Robert H. Stratton
ROBERT H. STRATTON PLS. 1111

SET RP'S 5/8" REBAR W/RED CAP "STRATTON CONTROL"
S 26°09' W, 32.58'
S 36°19' E, 28.05'

FOUND 2" IRON PIPE WITH NAIL

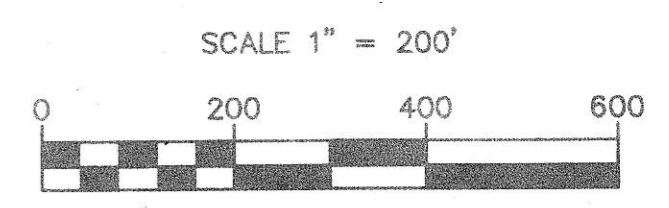


CURVE TABLE

CURVE	LOT	RADIUS	LENGTH	TANGENT	CHORD	BEARING	DELTA
C1	1	20.00'	31.36'	19.95'	28.25'	N 45°14'37" W	89°51'03"
C2	2	20.00'	31.47'	20.05'	28.32'	N 44°45'23" E	90°08'57"
C3	5	20.00'	31.35'	19.94'	28.24'	S 45°13'46" E	89°49'22"
C4	5	20.00'	15.50'	8.16'	15.12'	N 67°39'05" E	44°24'55"
C5	5	50.00'	38.60'	20.32'	37.65'	S 67°33'46" W	44°14'17"
C6	4	50.00'	78.69'	50.15'	70.82'	S 45°13'46" E	90°10'38"
C7	9	50.00'	78.39'	49.85'	70.60'	S 44°46'14" W	89°49'22"
C8	8	50.00'	38.91'	20.50'	37.94'	N 68°01'19" W	44°35'33"
C9	8	20.00'	15.50'	8.16'	15.12'	S 67°56'00" E	44°24'55"
C10	8	20.00'	31.48'	20.06'	28.33'	N 44°46'14" E	90°10'38"
C11	11	20.00'	31.35'	19.93'	28.23'	N 45°13'00" W	89°47'50"
C12	16	50.00'	47.41'	25.66'	45.65'	N 27°02'55" E	54°19'41"
C13	15	50.00'	69.89'	42.02'	64.34'	N 85°44'37" W	80°05'14"
C14	15	20.00'	15.50'	8.16'	15.12'	S 67°54'27" E	44°24'55"
C15	14	20.00'	31.49'	20.07'	28.33'	N 44°47'00" E	90°12'10"
C16	19	20.00'	31.33'	19.92'	28.23'	N 45°12'04" W	89°45'56"
C17	18	20.00'	15.50'	8.16'	15.12'	N 67°42'31" E	44°24'55"
C18	18	50.00'	38.56'	20.29'	37.61'	S 67°35'29" W	44°10'51"
C19	17	50.00'	78.74'	50.20'	70.86'	S 45°12'04" E	90°14'04"
C20	24	50.00'	78.34'	49.80'	70.57'	N 44°47'56" E	89°45'56"
C21	23	50.00'	38.96'	20.53'	37.99'	S 67°59'36" E	44°38'59"
C22	23	20.00'	15.50'	8.16'	15.12'	S 67°52'34" E	44°24'55"
C23	22	20.00'	15.50'	8.16'	15.12'	S 67°42'31" W	44°24'55"
C24	22	50.00'	38.56'	20.29'	37.61'	N 67°35'29" E	44°10'51"
C25	21	50.00'	78.74'	50.20'	70.86'	N 45°12'04" W	90°14'04"
C26	20	50.00'	38.56'	20.29'	37.61'	N 22°00'24" E	44°10'51"
C27	20	20.00'	15.50'	8.16'	15.12'	N 21°53'22" E	44°24'55"
C28	20	50.00'	117.30'	118.99'	92.19'	N 67°19'23" W	134°24'55"
C29	20	20.00'	15.50'	8.16'	15.12'	N 67°40'37" E	44°24'55"

LEGEND

- = SET 5/8" x 30" REBAR WITH PLASTIC CAP STAMPED LS 1111
- = 5/8" REBAR OR AS INDICATED
- B.O.B. = BASIS OF BEARING
- ⊙ = SET 2" x 36" GALVANIZED PIPE 6" BELOW SURFACE
- ⊕ = IRRIGATION WELL
- TACK = SET TACK W/BRASS WASHER STAMPED LS 1111
- M = MEASURED DISTANCE
- DK = RECORD DISTANCE BY DAVE KRUMBEIN PLS



BASIS OF BEARING
SURVEY FOR GLEN MOORE DATED 2/26/80
BY KRUMBEIN ENGINEERING CO.
EQUIPMENT USED
A FIVE-SECOND TOTAL STATION

FINAL PLAT FOR GLEN & MARGARET MOORE

INDEX

1/4	SEC	T.	R.
17	4	N	25E

STRATTON SURVEYING & MAPPING 1350 GRANDRIDGE BLVD SUITE 200 KENNEWICK, WASHINGTON 99336 (509) 735-7364	
2269PL-2.DWG	SHT. 1 OF 2
DATE: 11/20/96	DRAWN BY: A.M.
	JOB # 2269

FND BLM RP.
S 44°57' W, 28.09'
FND 1 1/2" IP
S 0°55' W, 20.53'

FOUND 5/8" REBAR AND OLD BRASS CAP (BENT)