

I do hereby certify that this is an exact copy of the filed plat of "WEEPING WILLOW ESTATES".

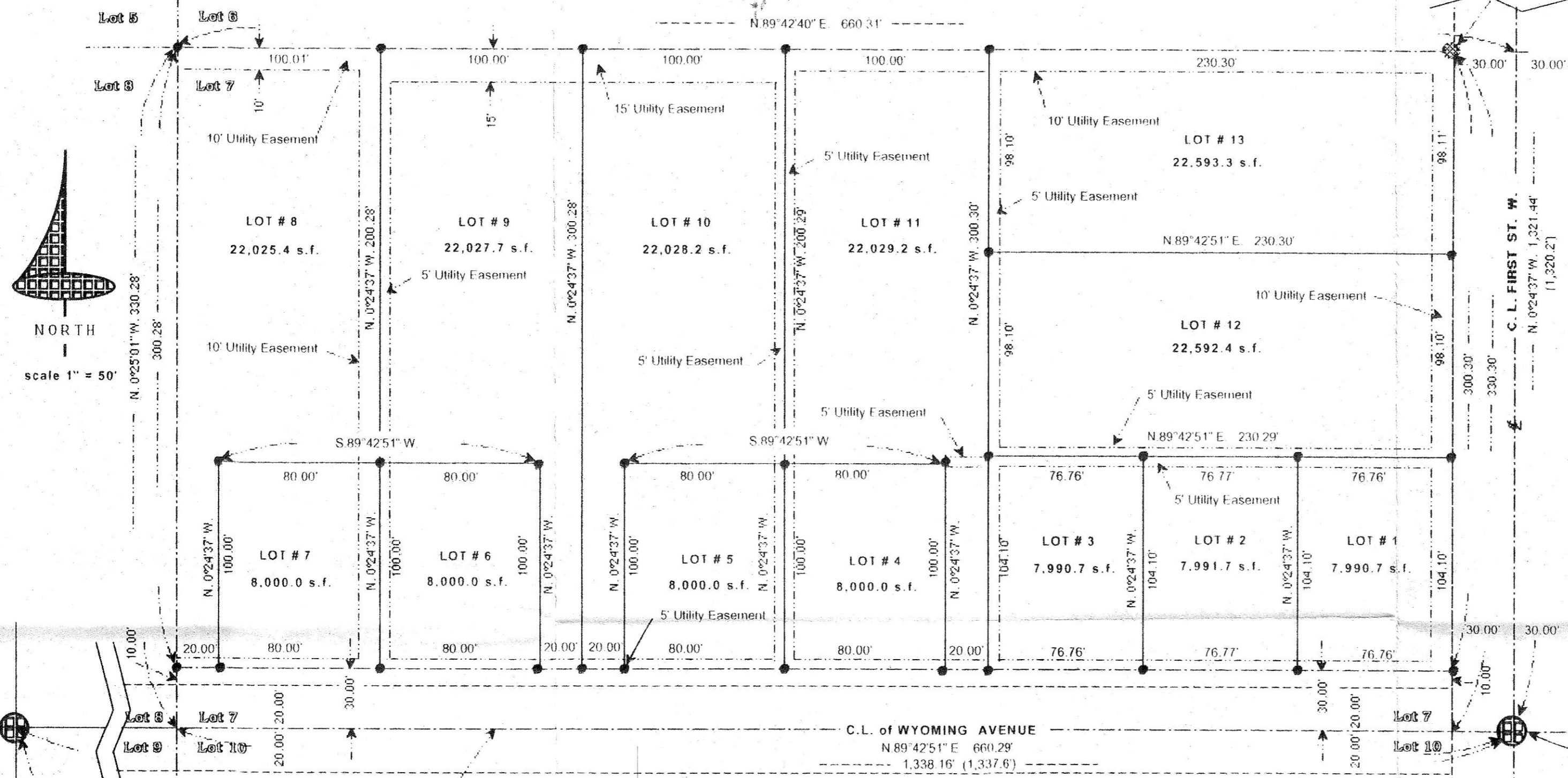
Ivan G. Driver P.L.S. #1756

### WEEPING WILLOW ESTATES

AN ADDITION TO THE CITY OF IRRIGON, MORROW COUNTY, OREGON  
A SUBDIVISION OF LOT 7, BLOCK 4 WEST OF THE OREGON LAND & WATER COMPANY'S  
SUBDIVISION OF A PART OF SECTION 25, TOWNSHIP 5 NORTH, RANGE 26 EAST, WILLAMETTE MERIDIAN  
LOCATED IN THE SW 1/4 OF THE NE 1/4 OF SECTION 25, T.5 N., R.26 E., W.M.

Find 5/8" I. Rod w/ Plastic Cap, L.S. 1861, 1984 Co. #B-687-K-244

INITIAL POINT:  
Set 3" B.C. in 6" Dia. x 24" Conc. Monument Stamped "Weeping Willow Estates", 1995 L.S. 1756



#### LEGEND

- INITIAL POINT
- 5/8" Dia. x 24" I.R. Set w/copper caps stamped LS 1756
- Points Found as Noted.
- (000) Of Record

#### REFERENCE:

Co. Survey D-865K-661, 1987, L.S. 933

#### SURVEYOR'S CERTIFICATE:

I, Ivan G. Driver, Do Depose and Say That I am a Registered Land Surveyor in the State of Oregon and that I have correctly surveyed and marked with legal monuments the Land represented in the accompanying Plat of "Weeping Willow Estates" located in the City of Irrigon, Morrow County, Oregon, which is Lot 7, Block 4 West, as shown on Tamblyn's 1935 Plat of Part of Section 25, recorded in Book 2, Page 6, Morrow County Book of Plats, and described as follows:

Beginning at the INITIAL POINT, set at the N.E. corner of said Lot 7, as described hereon and running; thence S.89°42'40" W., 630.31' along the north line of said Lot 7 to the D.W. corner thereof; thence S.0°25'01" E., 330.28' feet to the S.W. Corner of said Lot 7 and the centerline of the County Road as petitioned in County Journal G-25 on 10-1-19; thence N.89°42'51" E., 630.28' feet along the centerline of said County Road to the S.E. Corner of said Lot 7; thence N.0°24'37" W., 330.30' feet to the INITIAL POINT.

All parcels will have water rights from the West Extention Irrigation District Canals, Ditches and Pipelines.

Find 1" I. Bar L.S. 2460, 1980 Co. #A-386-K-47

This is the C. of a County Road shown on Tax Map as petitioned in Co. Journal G-25 on 10-1-19 as 40' R.W.

Find 1" I. Bar L.S. 2460, 1980 Co. #A-386-K-47

REGISTERED PROFESSIONAL LAND SURVEYOR

OREGON DECEMBER 15 1978 IVAN G. DRIVER 1756

Ivan G. Driver, P.L.S. #1756 Expires 12-31-95

COUNTY ASSESSOR & TAX COLLECTOR:  
I, Gregory Paul Sweach, Assessor and I, Marilyn Childers, Tax Collector of Morrow County, Oregon, do hereby certify that we have examined the Tax Records relative to the lands covered by the accompanying plat and all monies for the State and County taxes and assessments that could constitute a lien on said lands have been paid.

*Gregory Paul Sweach* County Assessor  
*Marilyn Childers* County Tax Collector  
Dated this 3rd day of November, 1995.

CITY OF IRRIGON PLANNING DIRECTOR:  
The accompanying plat is hereby approved this 31st day of October, 1995.  
*Dorcas Veppanbach*  
City of Irrigon Planning Director

WEST EXTENTION IRRIGATION DISTRICT:  
The accompanying plat is hereby approved by resolution of the undersigned Board of Directors, duly adopted this 2nd day of November, 1995.  
*William B. Jipton* Chairman  
*Blaine Bea* Secretary

MORROW COUNTY COURT:  
This is to certify that the accompanying plat is approved for filing and recording in the "RECORD OF TOWN PLATS", of Morrow County, Oregon, by the undersigned by its order this 3rd day of November, 1995.  
*David Gardner* County Judge  
*G. J. Friend* County Commissioner  
*David W. Callahan* County Commissioner

MORROW COUNTY CLERK:  
I, Barbara Bloodworth, Morrow County Clerk, do hereby certify the above named were on the date of said order above specified and now are the duly qualified, elected, sworn and acting Judge and Commissioners of said County, and that the seal affixed is the seal of my office.  
*Barbara Bloodworth*  
Morrow County Clerk  
Dated this 8th day of November, 1995

MORROW COUNTY SURVEYOR  
The accompanying plat is hereby approved this 26th day of OCT, 1995.  
*I. G. Driver*  
Morrow County Surveyor

OWNER'S DECLARATION:  
I, the owner of the land shown hereon, hereby establish this Plat as the official Map and Plat of "Weeping Willow Estates". I hereby dedicate to the public forever the rights-of-way and public utility easements designated thereon and the 30 feet of the North Half of WYOMING AVENUE, as shown.  
*Daniel Biamonte*

State of Oregon } ss  
County of \_\_\_\_\_ }  
Subscribed and sworn before me on this \_\_\_\_\_ day of \_\_\_\_\_, 1995.  
Notary Public for Oregon  
My Commission expires \_\_\_\_\_

Recording information filed Nov. 9, 1995 at 8:20am. File number 154392  
*Barbara Bloodworth* Morrow County Clerk  
*Helenie Kelsey* County Clerk

2/1/96 SKB C-1072-E (845)