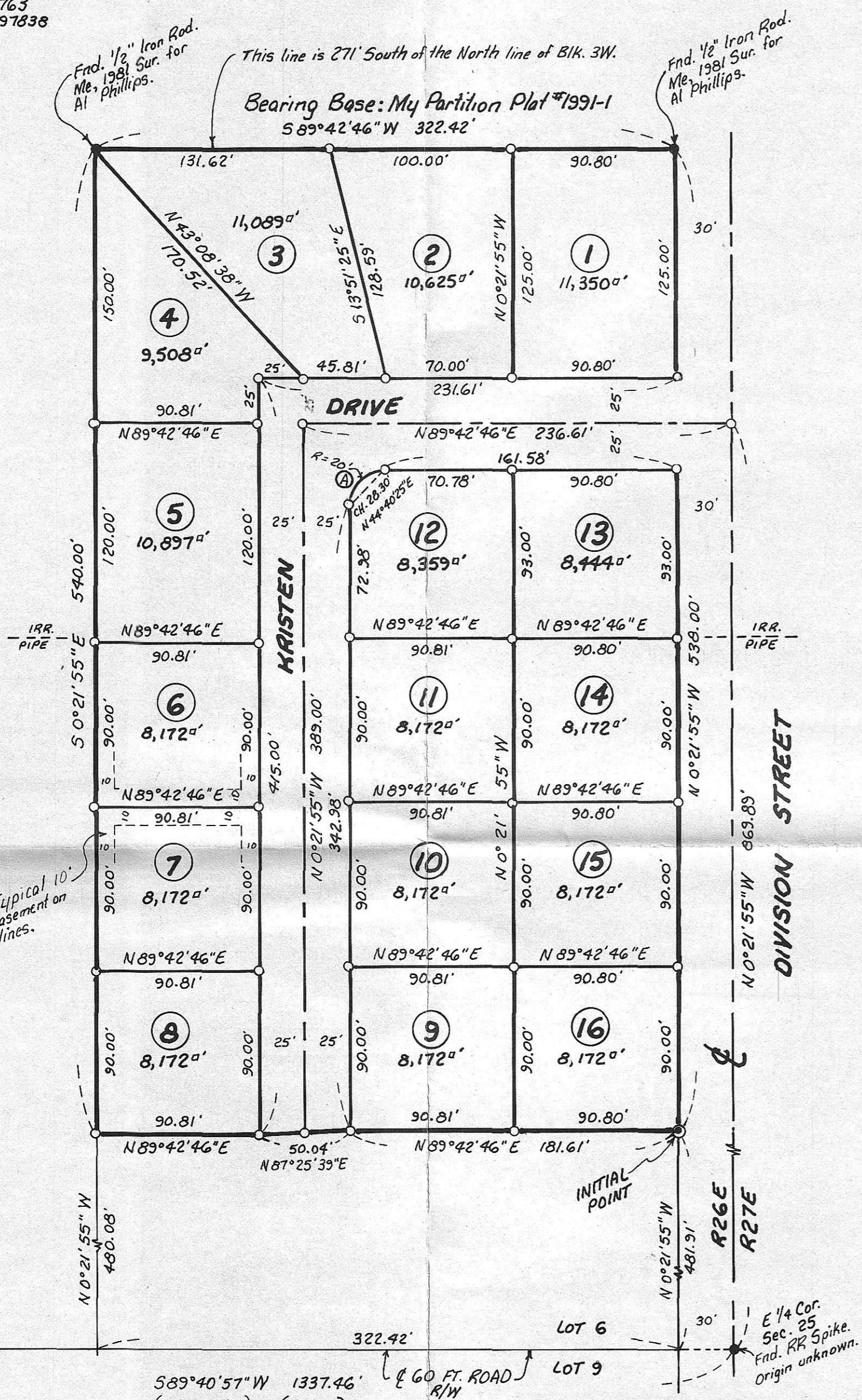


Prepared By:  
Edwards Surveying P.O. Box 763  
503-567-3336 Hermiston, OR 97138  
Drwn. By: SKB.

# DUNE ADDITION PHASE ONE

To the City of Irrigon, Morrow County, Oregon  
A Replat of Part of Block 3W, of Tamblin's 1935 Plat of Subdivision  
of Part of Section 25,  
In NE 1/4 Section 25, T5N, R26E, W. M.

RECEIVED BY  
Morrow County Surveyor  
Date 8-12-94  
Rec'd By SKB  
No. C-1022-E 195



### LEGAL DESCRIPTION:

That portion of Block 3 West, as shown on Tamblin's 1935 Plat of Part of Section 25, recorded in Book 2, Page 6, Morrow County Book of Plats, being described as follows:  
Beginning at the INITIAL POINT, described below, and running; thence along the East line of said Block 3 West N0°21'55"W 538.00 feet to a point which lies 271.00 feet South of the Northeast corner of said Block 3 West; thence S89°42'46"W parallel with the North line of said Block 3 West a distance of 322.42 feet; thence S0°21'55"E parallel with the East line of said Block 3 West 540.00 feet; thence N89°42'46"E parallel with the North line of said Block 3 West 90.81 feet; thence N87°25'39"E 50.04 feet; thence N89°42'46"E 181.61 feet to the INITIAL POINT.

### SURVEYOR'S CERTIFICATE:

I, G. Dennis Edwards, have correctly surveyed the land shown on this Plat of "DUNE ADDITION."  
The INITIAL POINT is a 5/8" rebar with an Aluminum Cap stamped Initial Point driven 6 inches below the surface. It lies N0°21'55"W 481.91 feet from the Southeast corner of Lot 6 of Block 3 West of Tamblin's 1935 Plat of the Subdivision of Part of Section 25, T5N, R26E, W. M., Morrow County, Oregon.  
The bearings are based on my Partition Plat #1991-1 in Block 2 West.

### COUNTY SURVEYOR:

I, County Surveyor, do hereby certify that I have examined the accompanying Plat, that it complies with the laws of the State of Oregon with reference to the filing and recording of such Plats, and I therefore approve said Plat for the approval of the County Court of Morrow County, Oregon. Dated this 8 day of August, 1994.  
David H. Klein  
Umatilla County Surveyor

### CITY OF IRRIGON PLANNING COMMISSION:

The accompanying Plat is hereby approved by the undersigned and adopted on this 4th day of August 1994, and report of said approval duly filed.  
Donna Eppendick  
City Administrator

### MORROW COUNTY COURT:

This is to certify that the accompanying Plat is approved for filing and recording in the "Record of Town Plats" of Morrow County, Oregon, by the undersigned by its order dated this 11th day of August, 1994.  
James Abelson County Judge  
John French Commissioner

### ASSESSOR & TAX COLLECTOR:

We, the Assessor and the Tax Collector of Morrow County, Oregon, do hereby certify that we have examined the tax records relative to the land covered by the accompanying Plat and that all monies due for State and County taxes and assessments that could constitute a lien on said land have been paid and we hereby approve said Plat.  
Dated this 11 day of August, 1994.  
Meggy Park Smith Assessor  
Marilyn Childers Tax Collector

### MORROW COUNTY CLERK:

Attest: I, the County Clerk of Morrow County, Oregon, do hereby certify that the above named were on the date of said order above specified and now are the duly qualified, elected, sworn and acting Judge and Commissioners of said County, and that the seal affixed is the seal of my office.  
Dated this 12th day of August, 1994, at 9:10 a.m.  
Barbara Bloodworth County Clerk  
File No: 151249

### WEST EXTENSION IRRIGATION DISTRICT:

The accompanying Plat is approved by the undersigned's Board of Directors, adopted this 9 day of August, 1994, and approval duly filed.  
William B. Joffe Chairman  
Stann Rea Secretary

Scale: 1" = 60'  
August 2, 1994

NOTE: Typical 10' Utility Easement on all Lot lines.

### LEGEND:

- Found monuments, as noted.
- Set 5/8" x 30" rebar with plastic cap #951.

### Lot 12 CURVE DATA

Δ = 90°04'41"  
R = 20'  
T = 20.03'  
L = 31.44'  
CH. = 28.30'

NOTE: There is a 10 foot utility easement adjacent to all lot lines for private and or public utilities.

This is an exact copy  
G. Dennis Edwards

### (OWNERS OF LOTS 1-4)

Loran D. Poage  
Loran D. Poage  
Carolyn M. Poage  
Carolyn M. Poage  
Anthony Kuper  
Anthony Kuper  
Kathleen M. Kuper  
Kathleen Kuper

### OWNER'S DECLARATION:

We, the owners of the land shown hereon, hereby establish this Plat as the official Map and Plat of "DUNE ADDITION." We hereby dedicate to the public forever 50 foot KRISTEN DRIVE, as shown.  
We also dedicate a 10 foot easement adjacent to all Lot lines for private and or public utilities.

Albert James Phillips  
Albert James Phillips (Owner Lots 5-16)  
State of Oregon }  
County of Morrow } SS  
Subscribed and sworn before me this 10 day of August, 1994.  
Stann Rea  
Notary Public of Oregon  
My commission expires 9-3-94.

State of Oregon }  
County of Deschutes } SS  
Subscribed and sworn before this 10 day of August, 1994.  
Brandi Gleason  
Notary Public of Oregon  
My commission expires June 16, 1998.

