

# EMERT SUBDIVISION

Located in Section 3, Township 1 South, Range 24 East, W.M., Morrow County, Oregon  
(Sheet 1 of 2)

Note: All Monuments Fnd. were set by me in 1991 Morrow County Survey No. D-978-E or in 1994 for Partition Plat No. 1994-4.

- Fnd. R/R Spike Stamped 951.
- Fnd. 1/2" Rebar with an Alum. Tag stamped 951.
- Fnd. 5/8" Rebar with plastic cap stamped 951.
- Set 5/8" Rebar with plastic cap stamped 951.
- ⊗ Set R/R Spike Stamped 951.

--- 20 foot Utility Easement.  
Note: There is a 10 foot wide Utility Easement adjacent to all lot lines except where shown as 20 feet.

- - - - C/L 20 foot wide Drainage Easement  
- - - - C/L 20 foot wide Phone Easement

REGISTERED PROFESSIONAL LAND SURVEYOR

*L. Dennis Edwards*

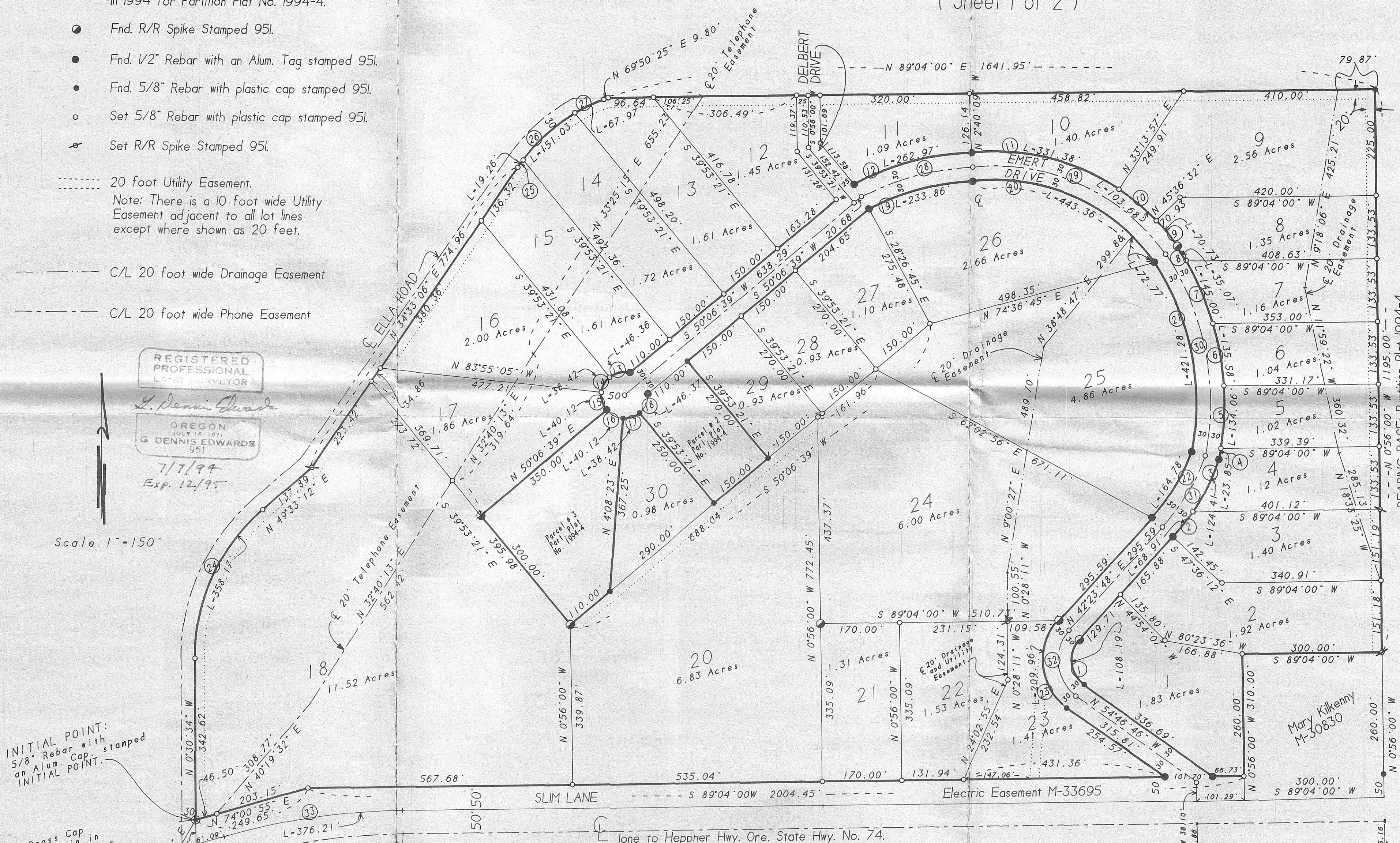
OREGON JULY 16, 1971  
G DENNIS EDWARDS  
951

7/7/94  
Exp. 12/95

Scale 1"=150'

INITIAL POINT:  
5/8" Rebar with an Alum. Cap stamped INITIAL POINT.

2 1/2" Brass Cap set by Krumbain in 1983 for the corners between Sections 3, 4, 9, and 10 T 1 S. R 24 E. W.M.



RECEIVED BY  
Morrow County Surveyor  
Date 8/94  
Rec'd By SKB  
No. C-1019-E (791)

This is an exact copy.  
*L. Dennis Edwards*