

CERTIFICATE of ENGINEER

I, H Tamlyn, being first duly sworn, depose and say that I am a Registered Professional Engineer in Oregon No. 1033 and that this plat is a true representation of the subdivision as shown by the records of the Oregon Land & Water Company, and is compiled in accordance with Chapter 69 Oregon Laws 1935.

H. Tamlyn

Subscribed and sworn to before me this 3rd day of May 1935.

J. W. Carson County Clerk

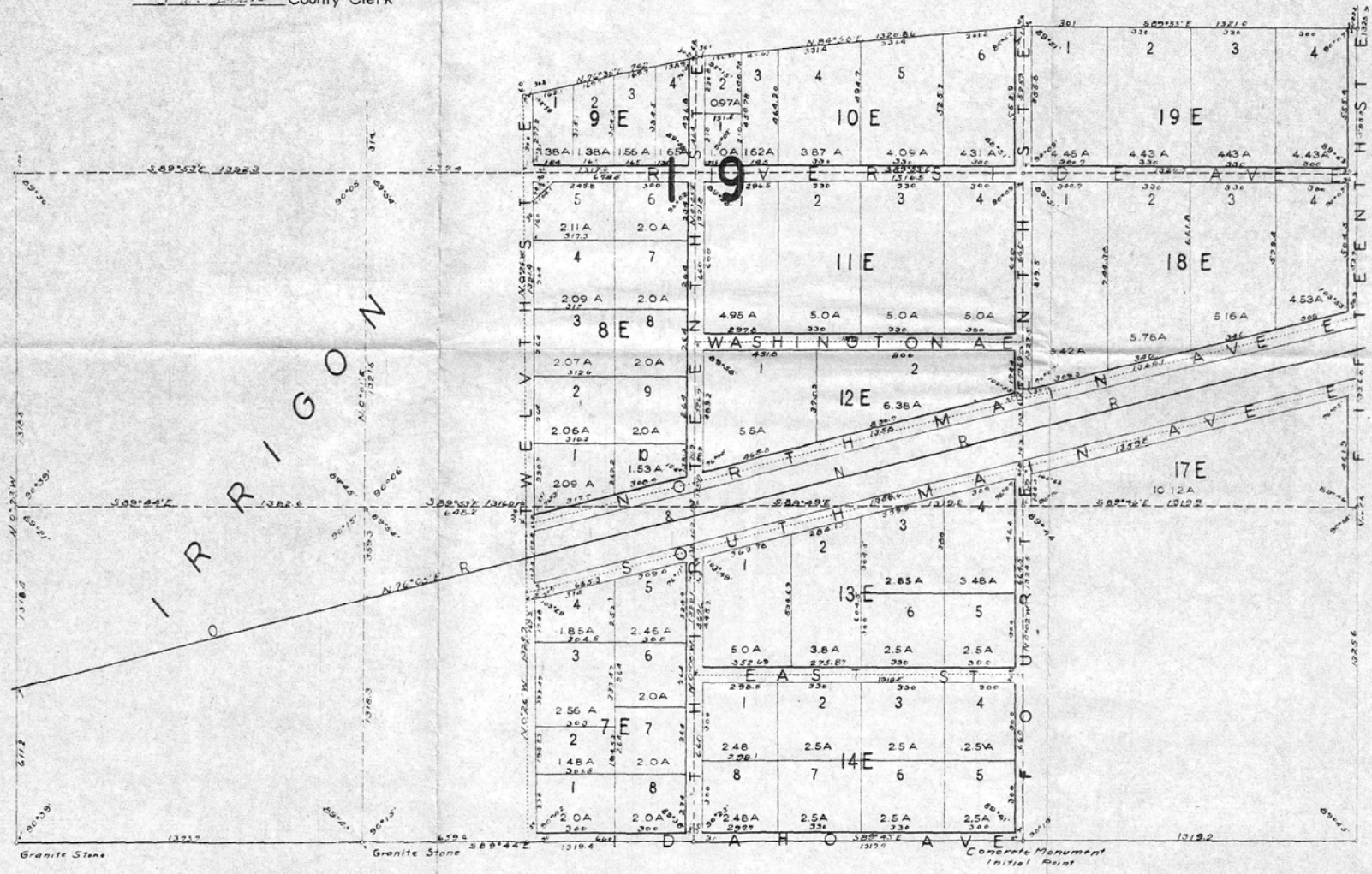
SUBDIVISION

OF

PART OF SECTION 19 T. 5 N. R. 27 E. W. M.

SCALE
1 inch = 300 ft.

RECEIVED BY
Morrow County Surveyor
Date 5/94
Rec'd By SKB
No. C-1006-E (778)



May 30 11 A
2
Book of Plats
J. W. Carson